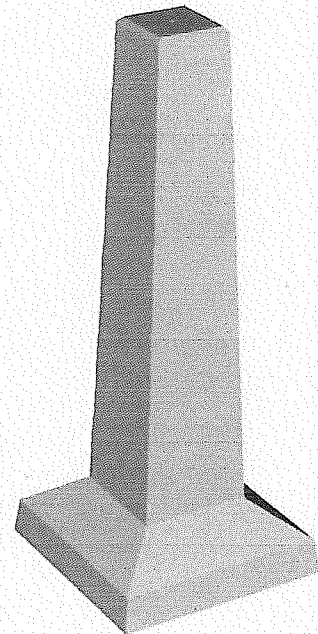
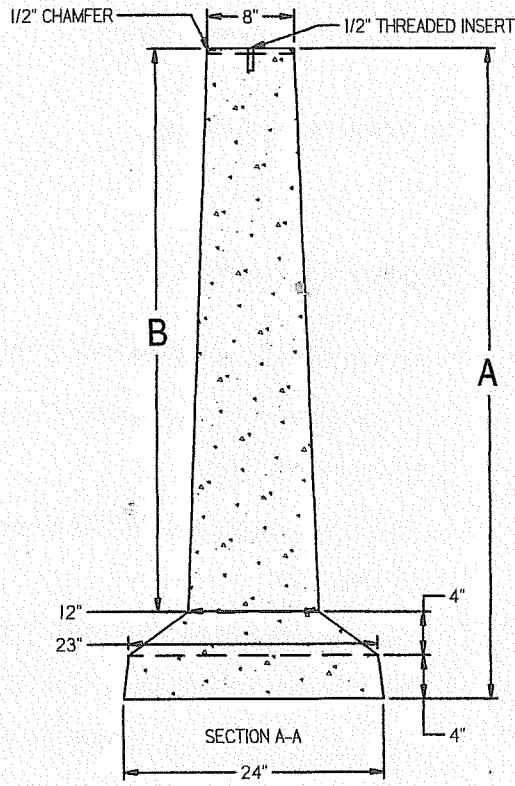
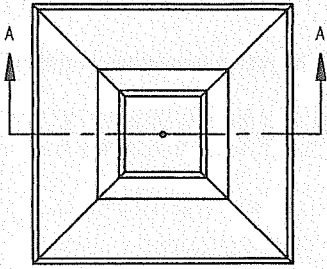


TOP VIEW
FROST POST HD



POST	OVERALL HEIGHT A	HEIGHT OF POST ONLY B	WEIGHT (LBS) C
4'	48"	40"	600
5'	60"	52"	710

- NOTES:
1. CONCRETE: 5000 PSI AFTER 28 DAYS
 2. REINFORCED WITH 3 - #3 BARS
 3. 1/2" THREADED INSERT CAST IN TOP FOR LIFTING