

PRELIMINARY LIFE SAFETY PLAN

NOTES:

*EXIT ACCESS CAPACITIES FROM ADJOINING AREAS HAVE NOT BEEN VERIFIED. THESE MAY OR MAY NOT BE ADEQUATE.

**GYM AREA HAS BEEN DIVIDED INTO TWO AREAS (WITH AND WITHOUT EQUIPMENT) FOR OCCUPANT LOAD FACTOR CALCULATIONS.

OCCUPANT LOADS ARE SHOWN IN PARENTHESES BELOW ROOM NAMES.

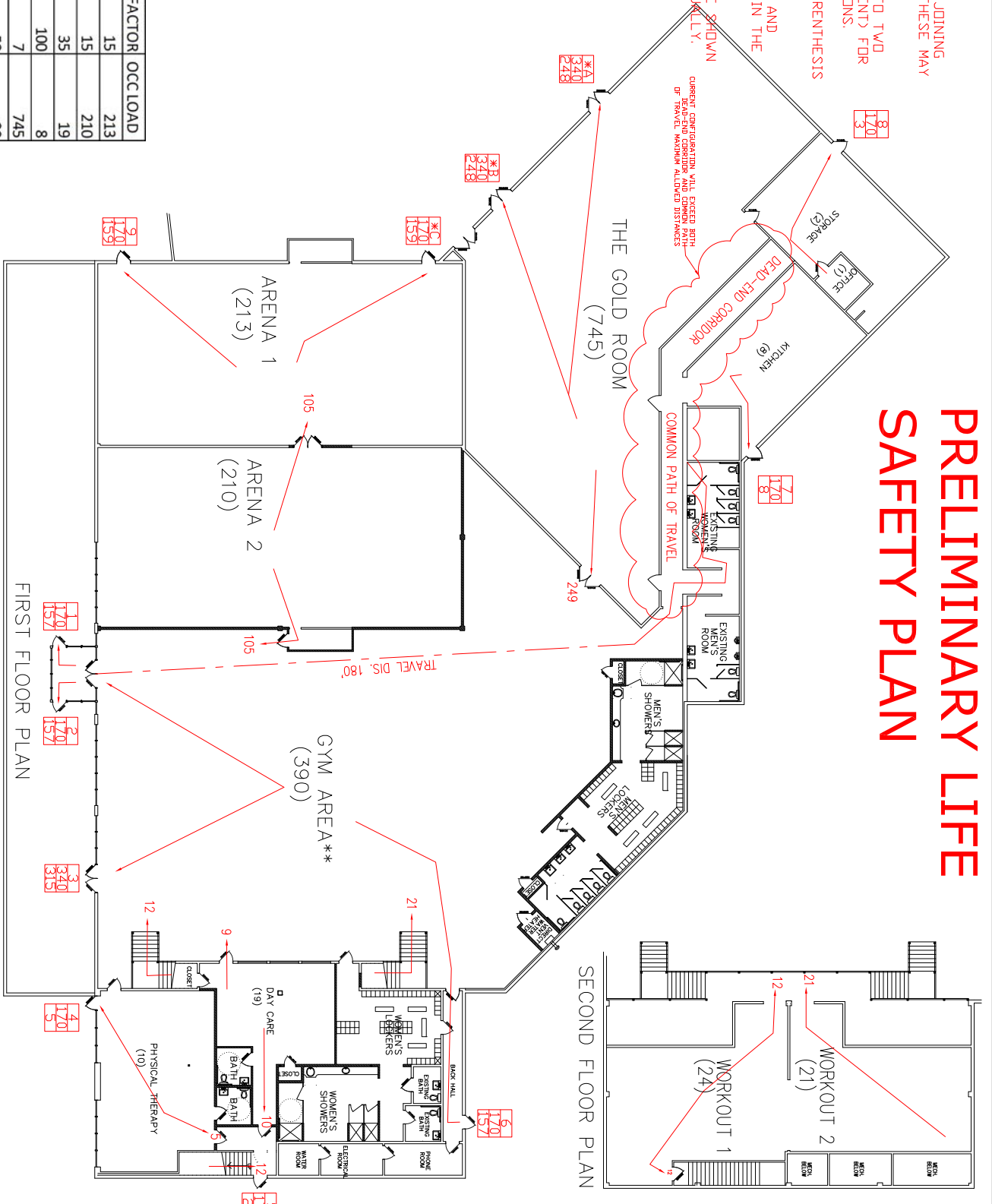
OCCUPANT LOADS, EXIT CAPACITIES AND EXIT/OCCUPANT LOADS ARE SHOWN IN THE TABLES BELOW.

OCCUPANTS EXITING EACH ROOM ARE SHOWN TO BE USING AVAILABLE EXITS EQUALLY.

EXIT#
EXIT-CAPACITY
OCCUPANT-LOAD

EXITS		
NUMBER	CAPACITY	OCCLOAD
1	170	157
2	170	157
3	340	315
4	170	5
5	170	27
6	170	157
7	170	8
8	170	3
9	170	159
A	340	248
B	340	248
C	170	159
TOTAL	1643	

ROOM	SQ.FT.	OCC FACTOR	OCCLOAD
ARENA 1	3187	15	213
ARENA 2	3148	15	210
DAY CARE	633	35	19
KITCHEN	750	100	8
THE GOLD ROOM	5211	7	745
GYM AREA (W/EQUIP)	4500	50	90
GYM AREA (OPEN)	4500	15	300
OFFICE	75	100	1
PHYSICAL THERPY	1000	100	10
STORAGE	850	500	2
WORKOUT 1	1200	50	24
WORKOUT 2	1020	50	21
TOTAL			1643



FIRE RISK MANAGEMENT, INC.
Fire Protection Engineers & Code Consultants
11 Front St., Suite 302, Portland, ME 04101-2909

PROJECT NAME: PORTLAND SPORTS COMPLEX
NEW GYM FACILITIES

Revisions:

3	PKM	TRE
2		
1		

DATE: 8-13-2014
DRAWN BY: JSM
CHECKED BY: JSM
DATE: 8-13-2014

512 WARREN AVENUE
PORTLAND, ME
LS-1