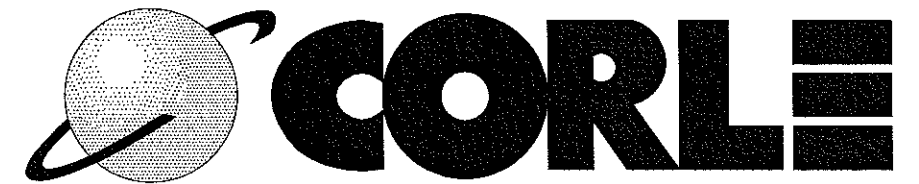
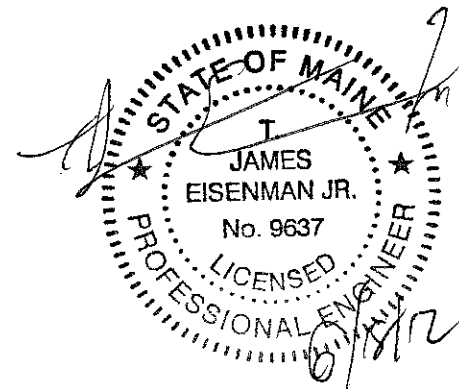


PORTLAND SPORTS REALTY, LLC
 SEACOAST CRANE & BUILDING CO., INC

FO# 17096

Building 1 of 1



114 ROSEMONT LANE, IMLER, PA 16655 (814) 276-9611

INDEX OF DRAWINGS

Page	Drawing Title	REV NO.
	Cover Page	0
1	Specifications	0
2	Anchor Bolt Plan	0
3	Rigid Frame Reactions	0
4	EndWall Reactions, Design Criteria	0
5	Anchor Bolt Details	0
6	Roof Framing	0
7	Roof Panel Layout	0
8	Rigid Frame #1	0
9	Rigid Frame #2	0
10	Front Sidewall Framing	0

Page	Drawing Title	REV NO.
11	Back Sidewall Framing	0
12	Left Endwall Framing	0
13	Right Endwall Framing	0
14	Liner Panel Layout	0
15	Detail Page #1	0
16	Detail Page #2	0
17	Detail Page #3	0
18		0
19		0
20		0
21		0

Page	Drawing Title	REV NO.
22		0
23		0
24		0
25		0
26		0
27		0
28		0
29		0
30		0
31		0
32		0

GENERAL
All materials included in the Metal Building System are in accordance with the manufacturer's standard materials and details unless otherwise specified on the order documents. (MBMA 2002 Metal Building Systems Manual, Part IV, Section 2.1)

DESIGN RESPONSIBILITY
The manufacturer is responsible only for the structural design of the Metal Building System it sells to the purchaser / customer. Neither the manufacturer nor the manufacturer's engineer is the design professional or engineer of record for the construction project. The manufacturer is not responsible for the design of any component or materials not sold by it, or their interface and connection with Metal Building System unless such design responsibility is specifically required by the order documents. (MBMA 2002 Metal Building Systems Manual, Part IV, Section 3.1)

FOUNDATION DESIGN AND ANCHOR BOLTS
The manufacturer is not responsible for the design, materials, and workmanship of the foundation. The anchor bolt plans prepared by the manufacturer are intended to show only the anchor bolt location, diameter (based on ASTM A36 bolts), and quantity required to connect the Metal Building System to the foundation. (MBMA 2002 Metal Building Systems Manual, Part IV, Section 3.2.2).
It is the responsibility of the end customer to ensure that adequate provisions are made for specifying bolt embedment, bearing angles, tie rods, and / or associated items embedded in the concrete foundation, as well as foundation design based on the loads imposed by the Metal Building System, or other imposed loads, and the bearing capacity of the soil and other conditions of the building site. (MBMA 2002 Metal Building Systems Manual, Part IV, Section 3.2.2)
U.S. -Anchor bolts shall be accurately set to a tolerance of +/- 1/8 in both elevation and location (AISC Code of Standard Practice for Steel Buildings and Bridges).
Canada -Anchor bolts shall be accurately set in accordance with CISC Code of Standard Practice, January 2000, Clause 7.7.1

ADJACENT EXISTING BUILDINGS
The manufacturer does not investigate the influence of the Metal Building System on adjacent existing buildings or structures. The end customer assures that such buildings and structures are adequate to resist snow loads or other conditions as a result of the presence of the Metal Building System. (MBMA 2002 Metal Building Systems Manual, Part IV, Section 3.2.5)

SHOP-PRIMED STEEL
All structural members of the Metal Building System not fabricated of corrosion resistant material or protected by corrosion resistant coating are painted with one coat of shop primer meeting the performance requirements of FS TTP-636D. All surfaces to receive shop primer are cleaned of loose rust, loose mill scale and other foreign matter by using, as a minimum, the hand tool cleaning method SSPC-SP2 (Steel Manual Structures Painting Council) prior to painting. The coat of shop primer is intended to protect the steel framing for only a short period of exposure to ordinary atmospheric conditions. Shop-primed is intended to protect the steel erection should be placed on blocking to prevent contact with the ground, and so positioned as to minimize water holding pockets, dust, mud or other contamination of the primer film. Repairs of damage to primed surfaces and or removal of foreign material due to improper field storage or site conditions are not the responsibility of the manufacturer. (CISC Code of Standard Practice, January 2000, Clause 6.8; (MBMA Metal Building Systems Manual, Part IV, Section 4.2.4).

ERECTION-GENERAL
The erector, by entering into contract to erect the building, holds itself out as skilled in the erection of Metal Building Systems and is responsible for complying with all applicable local, federal, and state construction and safety regulations including OSHA regulations as well as any applicable requirements of local, national, or international union rules or practices. (CISC Code of Standard Practice, January 2000, Clause 7.2; (MBMA 2002 Metal Building System Manual, Part IV, Section 6.9).
The erector shall erect the Metal Building System in accordance with the erection drawings, the Erection and Detail Manual (January 2010), and / or the Seam-Lok Technical - Erection manual (January 2010) as furnished by the manufacturer. The aforementioned erection information is intended to illustrate the layout of the framing members, provide the associated connection details, and suggests sequence of erection.
It is not intended to specify any particular method of erection to be followed by the erector. The erector remains solely responsible for the safety and appropriateness of all techniques and methods utilized by its crews in the erection of the Metal Building System. The erector is responsible for supplying any safety devices such as scaffolds, runways, nets, et, which may be required to safely erect the Metal Building System. (MBMA 2002 Metal Building Systems Manual, Part IV, Section 6.9) The manufacturer expressly disclaims any responsibility for injury to persons in the course of erection or for damages to the product itself. Field erection of a Pre-Engineered Metal Building, as in all construction projects, involves hazards to persons within the area of the construction and risk of damage to the property itself. Only experienced persons who are skilled and qualified in the erection of Metal Building Systems should be permitted to field-erect a building due to the hazards of this construction activity. The manufacturer is not responsible for the erection of the Metal Building System, the supply of any tools or equipment, or any other field work. The manufacturer provides no field supervision for the erection of the structure nor does the manufacturer perform any intermediate or final inspections of the Metal Building System during or after erection.
The erector shall furnish temporary guys and bracing where needed for squaring, plumbing, and securing the structural framing against loads, such as wind loads acting on the exposed framing as well as loads due to erection equipment and erection operation, but not including loads resulting from the performance of work by others. Bracing furnished by the manufacturer for the Metal Building System cannot be assumed to be adequate during erection. Temporary supports such as temporary guys, braces, false work, cribbing, or other elements required for the erection operation will be determined, erected, and installed by the erector. (AISC Code of Standard Practice for Steel Buildings and Bridges, March 7, 2000, Section 7.10.3; CISC Code of Standard Practices, January, 2000, Clause 1.5; MBMA Metal Buildings System Manual, Part IV, Section 6.2.1.5).

ERECTION TOLERANCES
U.S. ; Erection tolerances are those set forth in AISC code of standard practice except individual members are considered, plumb, level and aligned if the deviation does not exceed 1:300. (AISC Code of Standard Practice for Steel Buildings and Bridges March 7, 2000 Section 7.13.1; MBMA 2002 Metal Building Systems Manual, Part IV, Section 6.8)
Canada; Erection tolerances are those set forth in CISC Code of Standard Practice except individual members are considered plumb, level and aligned if the deviation does not exceed 1:500. (CISC Handbook of Steel Construction, Ninth Edition, Second Revised Printing, Part1, Clause 29.7.2; MBMA 2002 Metal Building Systems Manual, Part IV, Section 6.8)

BOLT TIGHTENING
The proper tightening and inspection of all fasteners is the responsibility of the erector. All high strength (ASTM A325, ASTM A490) bolts and nuts must be tightened by the "turn-of-the-nut" method unless otherwise specified by the end customer in the contract documents. Inspection of high strength bolt end nut installation by other than the erector must also be specified in the contract documents and the erector is responsible for ensuring that the installation procedures are compatible prior to the start of erection (CISC Handbook of Steel Construction, Ninth Edition, Second Revised Printing, Part 1, Clause 23.8.2), (MBMA 2002 Metal Building Systems Manual, Part IV, Section 5.9)

MATERIALS	ASTM DESIGNATION	MINIMUM YIELD	MATERIALS	ASTM DESIGNATION	MINIMUM YIELD
Hot-Rolled Mill Sections	A 36, A 572, A 992	Fy = 36 ksi and/or 50 ksi	Roof and Wall Sheeting	A 792, Gr. 50 Class 1 A 792, Gr. 80	Fy = 50 ksi Fy = 80 ksi
Structural Steel Plates	A 572, A 1011	Fy = 55 ksi	Mild Steel Bolts	A 307	Fy = 36 ksi
Structural Steel Bars	A 572 or A 529	Fy = 55 ksi	High Strength Bolts	A 325-N A 490-N	Fy = 92 or 81 ksi N/A
Cold Formed Light Gauge Shapes	A 653 Gr. 50 Modified	Fy = 55 ksi	Anchor Rods (If supplied)	A 36	Fy = 36 ksi
Cable Bracing	A 475, EHS	N/A	Pipe and Hollow Structural Sections	A 500 Gr. B	Fy = 42 ksi, 46 ksi
Rod Bracing	A 36	Fy = 36 ksi			

CORRECTION OF ERRORS AND REPAIRS
The correction of minor misfits by the use of drift pins to draw the components into line, shimming, moderate amounts of reaming, chipping, and cutting, and the replacement of minor shortages of material are a normal part of erection and are not subject to claim. (AISC Code of Standard Practice for Steel Buildings and Bridges, March 7, 2000, Section 7.14; CISC Code of Standard Practice, January 2000, Clause 7.15; MBMA 2002 Metal Building Systems Manual, Part IV, Section 6.10).

DRAWING DISCREPANCIES
In case of discrepancies between the manufacturers steel plans and plans for other trades, the manufacturers steel plans govern. (AISC Code of Standard Practice for Steel Buildings and Bridges, March 7, 2000, Section 3.3; CISC Code of Standard Practice, January 2000, Clause 3.4; MBMA 2002 Metal Building Systems Manual, Part IV, Section 3.1).

DELIVERIES
Delivery of any material by the manufacturers carrier, a common carrier, or to purchasers/ customers own leased, chartered, or authorized conveyance shall constitute delivery to builder, and thereafter, such material shall be at builders risk. If builder chooses to use its own, or private carrier, it shall be solely responsible for compliance with all applicable government regulations. All charges shall be borne by the builder. The manufacturers responsibility for damage or loss ceases upon delivery of shipment to carrier. The manufacturer will endeavor to deliver on the required date. The manufacturers truck is not considered as being late if deliveries are between 8am - 12pm (morning) and 12pm - 5pm (afternoon). However, the manufacturer cannot be held responsible for circumstances beyond our control. For deliveries via the manufacturers truck, the manufacturer will only honor claims that were approved by the customer service department at the time of delivery. For deliveries via contract carriers, it is the responsibility of the customer to file claims with the carrier. The manufacturer cannot assume any liability for the claim.

SHORTAGES
The purchaser /customer should make an inspection upon arrival of all building components. The purchaser/customer must note on the freight bill any missing item(s) and notify the manufacturers customer service department immediately; otherwise, the manufacturer cannot be held responsible for any shortages. If any item is damaged, note on the bill of lading and file a claim with the freight agent. Concealed shortages must be reported to the manufacturers customer service department within the following time frames (date from receipt of first delivery), based on the project shipment size, i.e., number of truck loads used in delivery.
1 to 3 loads.... 2 weeks 4 loads and over.... 3 weeks
The manufacturers responsibility for shortages expires at the end of these time periods.


FABRICATION ERRORS
The purchaser/customer is responsible for contacting the customer service department to advise the manufacturer of fabrication problems and corresponding cost estimates. The manufacturer will be responsible for providing the builder with verbal approval to proceed with appropriate field corrections. This will be done in a timely manner. IF THE BUILDER PROCEEDS WITH CORRECTIVE WORK WITHOUT THE MANUFACTURERS APPROVAL, HE DOES SO AT HIS OWN RISK. The manufacturer shall not be responsible for any claims where the purchaser/customer has not documented the problem, its correction, and reasonable costs for repair, and submitted this documentation for payment within 30 days of the occurrence.

INVOICE PAYMENT
By acceptance of the materials of services set forth in the invoice, the purchaser/customer agrees to pay the invoice amount within the time period specified on the invoice. AT NO TIME IS IT ACCEPTABLE TO DEDUCT A BACK CHARGE OR SHORTAGE FROM AN INVOICE.

SAFETY PROCEDURES
THE MANUFACTURER IS COMMITTED TO MANUFACTURING A QUALITY PRODUCT THAT CAN BE ERECTED SAFELY. ALTHOUGH GOOD JOB SITE PRACTICES AND A COMMITMENT TO SAFETY BY THE ERECTOR ARE BEYOND THE CONTROL OF THE MANUFACTURER, THE MANUFACTURER HIGHLY RECOMMENDS THE ERECTOR PROVIDE GOOD, SAFE WORKING CONDITIONS ON THE JOB SITE. THE ERECTOR SHOULD FOLLOW ALL LOCAL, STATE, AND FEDERAL HEALTH AND SAFETY REGULATIONS AT ALL TIMES. ACCIDENT PREVENTION PRACTICES SHOULD BE IMPLEMENTED AND EACH EMPLOYEE SHOULD KNOW EMERGENCY PROCEDURES. THE MANUFACTURER ALSO RECOMMENDS DAILY MEETINGS TO DISCUSS ERECTION SAFETY PROCEDURES. FOR ADDITIONAL INFORMATION CONCERNING FEDERAL HEALTH AND SAFETY REGULATIONS, CONTACT THE OCCUPATIONAL SAFETY AND HEALTH ADMINISTRATION (OSHA).

U.S. Department of Labor
Occupational Safety and Health Administration
200 Constitution Avenue, N.W.
Washington, DC 20210
www.osha.gov

THE MANUFACTURER SHALL NOT BE RESPONSIBLE FOR PERSONAL INJURY OR PROPERTY DAMAGE AS A RESULT OF FAILURE TO FOLLOW ALL APPLICABLE SAFETY REGULATIONS AND MATERIAL HANDLING AND INSTALLATION RECOMMENDATIONS.



114 ROSEMENT LANE, IMLER, PA 16655 (814)276-9611

PORTLAND SPORTS REALTY, LLC

120'-0" x 150'-0" x 34'-0"

DATE: 5/31/12 REVISION: 0

ENG: JKB DWN: KAH APPD: JKB

PORTLAND SPORTS REALTY, LLC

DRAWING STATUS

REVISION HISTORY

F.O. 17096

DATE	DESCRIPTION

FOR APPROVAL, THESE DRAWINGS BEING FOR APPROVAL, ARE BY DEFINITION NOT FINAL, AND ARE FOR CONCEPTUAL REPRESENTATION ONLY. THEIR PURPOSE IS TO CONFIRM PROPER INTERPRETATION OF THE PROJECT DOCUMENTS. ONLY DRAWINGS ISSUED FOR CONSTRUCTION CAN BE CONSIDERED AS COMPLETE.

FOR PERMIT, THESE DRAWINGS BEING FOR PERMIT, ARE BY DEFINITION NOT FINAL, ONLY DRAWINGS ISSUED FOR CONSTRUCTION CAN BE CONSIDERED AS COMPLETE.

FOR CONSTRUCTION, THESE DRAWINGS BEING FOR PERMIT, ARE BY DEFINITION NOT FINAL, ONLY DRAWINGS ISSUED FOR CONSTRUCTION CAN BE CONSIDERED AS COMPLETE.

STATE OF MAINE

T. JAMES EISENMAN JR.

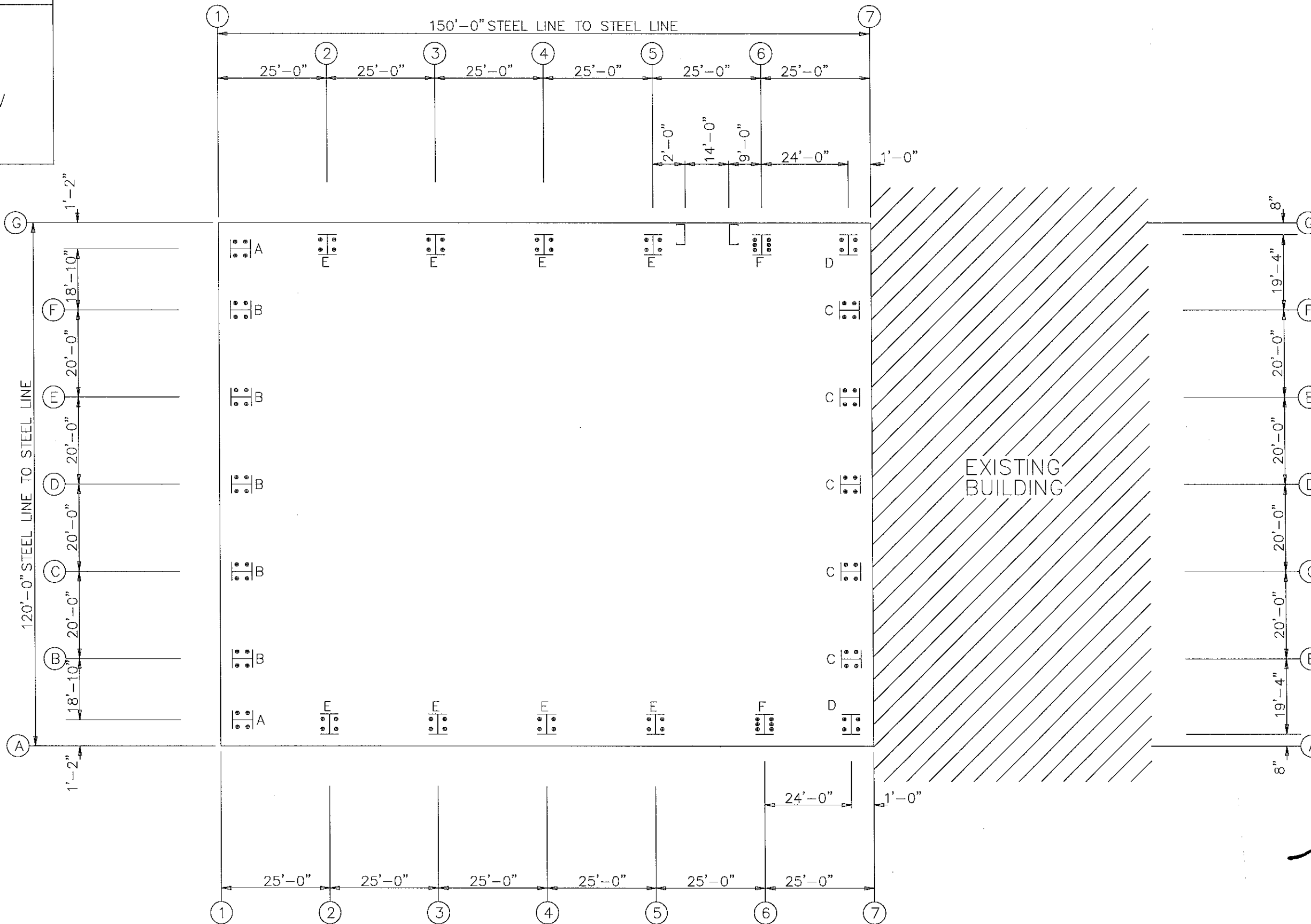
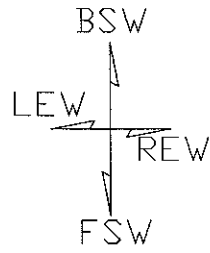
No. 9637

PROFESSIONAL ENGINEER

JUN 1 8 2012

PAGE 1 OF 17

LEGEND



ANCHOR BOLT PLAN
NOTE: All Base Plates @ 100'-0" (U.N.)



114 ROSEBENT LANE, IMLER, PA 16655 (814)276-9611
PORTLAND SPORTS REALTY, LLC

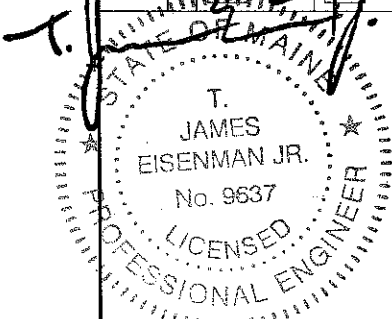
120'-0" x 150'-0" x 34'-0"
DATE: 5/31/12 REVISION: 0
ENG: JKB DWN: DJH APPD: JKB

F.O. 17096

PORTLAND SPORTS REALTY, LLC

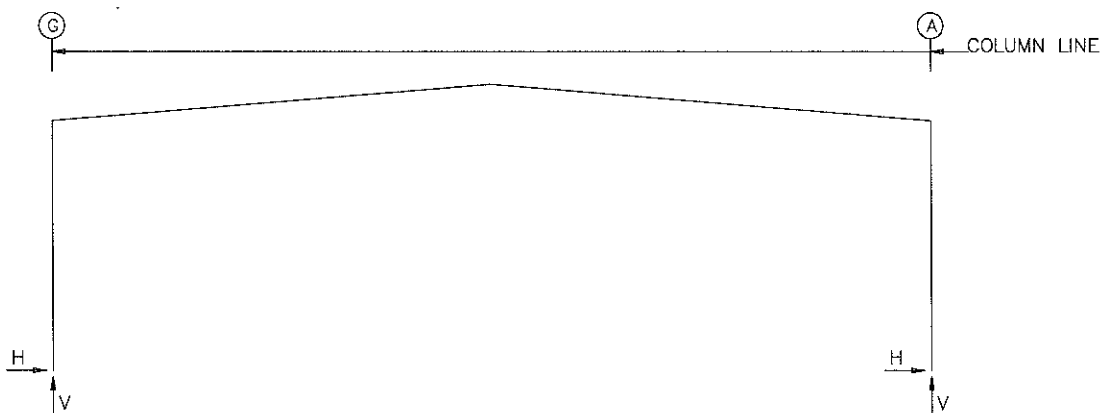
REV.	DESCRIPTION	DATE

DRAWING STATUS
 FOR APPROVAL: THESE DRAWINGS, BEING FOR APPROVAL, ARE BY DEFINITION NOT FINAL, AND ARE FOR CONCEPTUAL REPRESENTATION ONLY. THEIR PURPOSE IS TO CONFIRM PROPER INTERPRETATION OF THE PROJECT DOCUMENTS. ONLY DRAWINGS ISSUED "FOR CONSTRUCTION" CAN BE CONSIDERED AS COMPLETE.
 FOR PERMIT: THESE DRAWINGS, BEING FOR PERMIT, ARE BY DEFINITION NOT FINAL. ONLY DRAWINGS ISSUED "FOR CONSTRUCTION" CAN BE CONSIDERED AS COMPLETE.
 FOR CONSTRUCTION: FINAL DRAWINGS.



JUN 18 2012

FRAME LINES: 2 3 4 5 6



RIGID FRAME: ANCHOR BOLTS & BASE PLATES

Frm Line	Col Line	Anc. Bolt Qty	Anc. Bolt Dia	Base Plate (in)			Grout (in)
				Width	Length	Thick	
2*	G	4	1.250	10.00	14.31	0.625	0.0
2*	A	4	1.250	10.00	14.31	0.625	0.0

2* Frame lines: 2 3 4 5

RIGID FRAME: ANCHOR BOLTS & BASE PLATES

Frm Line	Col Line	Anc. Bolt Qty	Anc. Bolt Dia	Base Plate (in)			Grout (in)
				Width	Length	Thick	
6	G	6	1.250	12.00	14.69	0.750	0.0
6	A	6	1.250	12.00	14.69	0.750	0.0

RIGID FRAME: BASIC COLUMN REACTIONS (k)

Frame Line	Column Line	---Dead---		---Collateral---		---Live---		---Snow---		---Wind_L1---		---Wind_R1---	
		Horiz	Vert	Horiz	Vert	Horiz	Vert	Horiz	Vert	Horiz	Vert	Horiz	Vert
2*	G	6.7	13.2	4.8	7.5	19.0	30.0	43.8	69.3	-16.1	-22.8	-6.2	-15.7
2*	A	-6.7	13.2	-4.8	7.5	-19.0	30.0	-43.8	69.3	6.2	-15.7	16.1	-22.8
Frame Line	Column Line	---Wind_L2---		---Wind_R2---		---LnWind1---		---LnWind2---		---Seismic_L---		---Seismic_R---	
		Horiz	Vert	Horiz	Vert	Horiz	Vert	Horiz	Vert	Horiz	Vert	Horiz	Vert
2*	G	-12.7	-13.0	-2.8	-6.0	-10.0	-33.9	-6.6	-24.2	-5.2	-2.7	5.2	2.7
2*	A	2.8	-6.0	12.7	-13.0	10.0	-33.9	6.6	-24.2	-5.2	2.7	5.2	-2.7
Frame Line	Column Line	---LnSeis---		---LWIND1_L2E---		---LWIND1_R2E---		---LWIND2_L2E---		---LWIND2_R2E---		---F1UNB_SL_L---	
		Horiz	Vert	Horiz	Vert	Horiz	Vert	Horiz	Vert	Horiz	Vert	Horiz	Vert
2*	G	0.0	-24.8	-0.4	-3.6	-0.7	-0.5	-0.4	-3.6	-0.7	-0.5	35.8	67.7
2*	A	0.0	-24.8	0.7	-0.5	0.4	-3.6	0.7	-0.5	0.4	-3.6	-36.0	38.9
Frame Line	Column Line	---F1UNB_SL_R---		---Collateral---		---Live---		---Snow---		---Drift---		---Wind_L1---	
		Horiz	Vert	Horiz	Vert	Horiz	Vert	Horiz	Vert	Horiz	Vert	Horiz	Vert
6	G	6.2	14.8	4.0	7.5	16.1	30.0	37.2	69.3	17.5	32.6	-14.4	-22.8
6	A	-6.2	14.8	-4.0	7.5	-16.1	30.0	-37.2	69.3	-17.5	32.6	4.5	-15.7
Frame Line	Column Line	---Wind_R1---		---Wind_L2---		---Wind_R2---		---LnWind1---		---LnWind2---		---Seismic_L---	
		Horiz	Vert	Horiz	Vert	Horiz	Vert	Horiz	Vert	Horiz	Vert	Horiz	Vert
6	G	-4.4	-15.7	-11.8	-13.0	-1.8	-6.0	-8.0	-23.6	-5.4	-13.9	-5.2	-2.8
6	A	14.4	-22.8	1.9	-6.0	11.8	-13.0	8.0	-23.6	5.4	-13.9	-5.2	2.8
Frame Line	Column Line	---Seismic_R---		---LWIND1_L2E---		---LWIND1_R2E---		---LWIND2_L2E---		---LWIND2_R2E---		---F2UNB_SL_L---	
		Horiz	Vert	Horiz	Vert	Horiz	Vert	Horiz	Vert	Horiz	Vert	Horiz	Vert
6	G	5.2	2.8	-0.4	-3.6	-0.7	-0.5	-0.4	-3.6	-0.7	-0.5	30.2	67.7
6	A	5.2	-2.8	0.7	-0.5	0.4	-3.6	0.7	-0.5	0.4	-3.6	-30.4	38.8
Frame Line	Column Line	---F2UNB_SL_R---		---Collateral---		---Live---		---Snow---		---Drift---		---Wind_L1---	
		Horiz	Vert	Horiz	Vert	Horiz	Vert	Horiz	Vert	Horiz	Vert	Horiz	Vert
6	G	30.4	38.8										
6	A	-30.2	67.7										

2* Frame lines: 2 3 4 5



114 ROSEMONT LANE, MILLER, PA 16655 (814)276-9611

PORTLAND SPORTS REALTY, LLC

120'-0" x 150'-0" x 34'-0"

DATE: 5/31/12

ENG: JKB

DWN: DJH

APPD: JKB

REVISION: 0

F.O. 17096

PORTLAND SPORTS REALTY, LLC

REVISION HISTORY

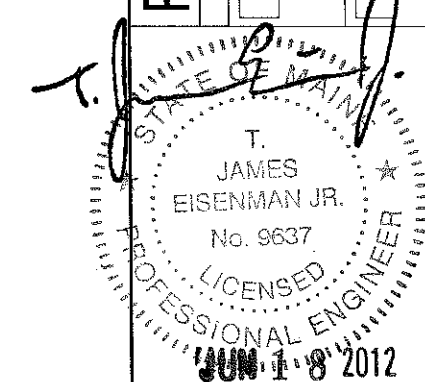
REV.

DRAWING STATUS

FOR APPROVAL: THESE DRAWINGS, BEING FOR APPROVAL, ARE BY DEFINITION NOT FINAL, AND ARE FOR CONCEPTUAL REPRESENTATION ONLY. THEIR PURPOSE IS TO CONFIRM PROPER INTERPRETATION OF THE PROJECT DOCUMENTS. ONLY DRAWINGS ISSUED "FOR CONSTRUCTION" CAN BE CONSIDERED AS COMPLETE.

FOR PERMIT: THESE DRAWINGS, BEING FOR PERMIT, ARE BY DEFINITION NOT FINAL. ONLY DRAWINGS ISSUED "FOR CONSTRUCTION" CAN BE CONSIDERED AS COMPLETE.

FOR CONSTRUCTION: FINAL DRAWINGS.



ENDWALL COLUMN: BASIC COLUMN REACTIONS (k)

Frm Line	Col Line	Dead Vert	Collat Vert	Live Vert	Snow Vert	Rafter Wind_L Vert	Rafter Wind_R Vert	Brace Wind_L Vert	Brace Wind_R Vert	Wind_P Horz	Wind_S Horz
1	G	1.2	0.6	2.4	5.7	-2.8	-1.6	0.0	-2.8	-1.6	-2.6
1	F	2.4	1.4	5.8	13.3	-6.5	-3.8	0.0	-6.5	0.0	-5.3
1	E	2.3	1.3	5.1	11.7	-5.9	-3.1	0.0	-5.9	0.0	-5.6
1	D	2.4	1.4	5.4	12.5	-4.6	-4.7	4.2	-12.0	0.0	2.8
1	C	2.3	1.3	5.1	11.7	-5.9	-3.1	0.0	4.4	4.2	-13.3
1	B	2.4	1.4	5.8	13.3	-6.5	-3.8	0.0	-3.8	0.0	-6.5
1	A	1.2	0.6	2.4	5.7	-2.8	-1.6	0.0	-2.8	0.0	-2.6

Frm Line	Col Line	LnWind1 Vert	LnWind2 Vert	--Seis_L Horz	--Seis_R Horz	E1UNB_SL_L Horz	E1UNB_SL_R Horz	--LWIND1_L Horz	--LWIND1_R Horz
1	G	-1.9	-1.1	0.0	0.1	0.0	-0.1	0.0	4.9
1	F	-4.6	-2.7	0.0	0.1	0.0	-0.1	0.0	13.6
1	E	-4.0	-2.3	0.0	0.1	0.0	-0.1	0.0	17.9
1	D	-4.1	-2.4	8.0	-15.0	0.0	14.3	0.0	10.8
1	C	-4.0	-2.3	0.0	14.9	8.0	-14.2	0.0	2.5
1	B	-4.6	-2.7	0.0	-0.1	0.0	0.1	0.0	4.2
1	A	-1.9	-1.1	0.0	-0.1	0.0	0.1	0.0	1.4

Frm Line	Col Line	--LWIND1_R Horz	--LWIND2_L Horz	--LWIND2_R Horz
1	G	0.0	0.0	-0.8
1	F	0.0	0.0	-1.5
1	E	0.0	0.0	0.1
1	D	0.0	0.0	0.0
1	C	0.0	0.2	0.0
1	B	0.0	-1.5	0.0
1	A	0.0	-0.8	0.0

Frm Line	Col Line	Dead Vert	Collat Vert	Live Vert	Snow Vert	Drift Vert	Rafter Wind_L Vert	Rafter Wind_R Vert	Brace Wind_L Horz	Brace Wind_R Horz	Wind_P Horz	Wind_S Horz
7	A	2.0	0.6	2.4	5.7	9.9	-2.8	-1.6	0.0	-2.8	-1.6	-2.6
7	B	3.1	1.4	5.8	13.3	26.8	-6.5	-3.8	2.1	-10.0	0.0	-5.2
7	C	3.2	1.3	5.1	11.7	23.4	-5.9	-3.0	2.1	-6.1	2.1	-5.6
7	D	3.3	1.4	5.4	12.5	22.7	-4.7	-4.7	0.0	-0.9	2.1	-5.8
7	E	3.2	1.3	5.1	11.7	23.4	-3.1	-5.9	0.0	-3.1	0.0	-5.6
7	F	3.0	1.4	5.8	13.3	26.8	-3.8	-6.5	0.0	-3.8	0.0	-5.2
7	G	2.0	0.6	2.4	5.7	9.9	-1.6	-2.8	0.0	-1.6	0.0	-2.6

Frm Line	Col Line	Wind_S Horz	LnWind1 Vert	LnWind2 Vert	--Seis_L Horz	--Seis_R Horz	E2UNB_SL_L Horz	E2UNB_SL_R Horz	--LWIND1_L Horz	--LWIND1_R Horz
7	A	3.1	-1.9	-1.1	0.0	0.0	0.0	4.9	0.0	1.4
7	B	5.8	-4.6	-2.7	3.8	-6.3	0.0	6.4	0.0	4.2
7	C	6.2	-4.0	-2.3	3.8	-0.5	3.8	0.7	0.0	2.5
7	D	6.5	-4.1	-2.4	0.0	7.0	3.8	-7.3	0.0	10.8
7	E	6.2	-4.0	-2.3	0.0	-0.1	0.0	2.5	0.0	17.9
7	F	5.8	-4.6	-2.7	0.0	-0.1	0.0	4.2	0.0	13.6
7	G	3.1	-1.9	-1.1	0.0	0.0	0.0	1.4	0.0	4.9

Frm Line	Col Line	--LWIND1_R Horz	--LWIND2_L Horz	--LWIND2_R Horz
7	A	0.0	0.0	-0.8
7	B	0.0	0.0	-1.5
7	C	0.0	0.0	0.1
7	D	0.0	0.0	0.0
7	E	0.0	0.1	0.0
7	F	0.0	-1.5	0.0
7	G	0.0	-0.8	0.0

ANCHOR BOLT SUMMARY

Qty	Locate	Dia (in)	Type
56	Endwall	3/4"	
44	Frame	1 1/4"	

BUILDING BRACING REACTIONS

Wall Loc	Col Line	Reactions in plane of wall ± Reactions (k)	Panel Shear (lb/ft)
		Wind	Seismic
		Horz	Vert
L_EW	1	D,C	Bracing, see EW reactions
F_SW	A	3,4	8.2 * 19.6 *
		4,5	8.2 * 19.6 *
R_EW	7	B,C	Bracing, see EW reactions
		C,D	Bracing, see EW reactions
B_SW	G	5,4	8.2 * 19.6 *
		4,3	8.2 * 19.6 *

*See RF reactions table for vertical and horizontal reactions in plane of the rigid frame.

ENDWALL COLUMN: ANCHOR BOLTS & BASE PLATES

Frm Line	Col Line	Anc. Bolt Qty	Anc. Bolt Dia	Base Plate Width	Base Plate Length	Base Plate Thick	Grout (in)
1	G	4	0.750	6.000	12.00	0.375	0.0
1	F	4	0.750	8.000	12.25	0.375	0.0
1	E	4	0.750	8.000	12.25	0.375	0.0
1	D	4	0.750	8.000	12.25	0.375	0.0
1	C	4	0.750	8.000	12.25	0.375	0.0
1	B	4	0.750	8.000	12.25	0.375	0.0
1	A	4	0.750	6.000	12.00	0.375	0.0
7	A	4	0.750	10.00	16.00	0.375	0.0
7	B	4	0.750	10.00	16.00	0.375	0.0
7	C	4	0.750	10.00	16.00	0.375	0.0
7	D	4	0.750	10.00	16.00	0.375	0.0
7	E	4	0.750	10.00	16.00	0.375	0.0
7	F	4	0.750	10.00	16.00	0.375	0.0
7	G	4	0.750	10.00	16.00	0.375	0.0

NOTES FOR REACTIONS


- All loading conditions are examined and only the maximum / minimum H or V and the corresponding H or V are reported.
- Positive reactions are shown in the sketch. Foundation loads are in opposite directions.
- Bracing reactions are in the plane of the brace with the H pointing away from the braced bay. The vertical reaction is downward.
- Building reactions are based on the following building data:

DESIGN CRITERIA

Width (ft)	= 120	SEISMIC CRITERIA	
Length (ft)	= 150	Seismic Importance	= 1.25
Eave Height (ft)	= 34	Occupancy Category	= III- High
Roof Slope (rise/12)	= 1.0:12		
Building Code	= IBC 09	Mapped Spectral Response Accelerations	
Local Code (State / Prov)	= IBC 09	Ss	= 0.3200
Dead Load (psf)	= 4.060	S1	= 0.0800
Collateral Load (psf)	= 5	Spectral Response Coefficients	
Roof Live Load (psf)	= 20.00	Sds	= 0.4855
Frame Live Load (psf)	= 20	Sd1	= 0.1867
		Site Class	= E
		Seismic Design Category	= C
		Base Shear	
		Expanded Formula	= 0.667* I_e * F_a * S_s * W/R
		Longitudinal Base Shear	= 78.49
		Transverse Base Shear	= 67.63
		Seismic Response Coefficients	
		Frame	= 0.165
		FSW	= 0.202
		BSW	= 0.202
		Response Modification Factors	
		Frame	= 3
		FSW	= 3
		BSW	= 3

Equivalent Lateral Brace Force Procedure.

Steel systems not specifically detailed for seismic resistance.



114 ROSEMONT LANE, MILLER, PA 16655 (814)276-9611
 PORTLAND SPORTS REALTY, LLC
 120'-0" x 150'-0" x 34'-0"
 DATE: 5/31/12 REVISION: 0
 ENG: JKB DWN: DJH APPD: JKB

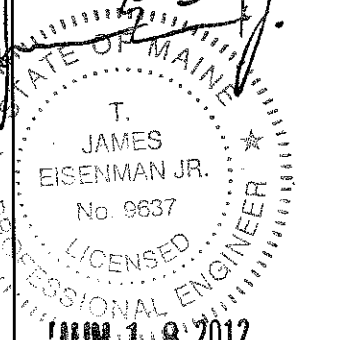
F.O. 17096

REV.	DESCRIPTION	DATE

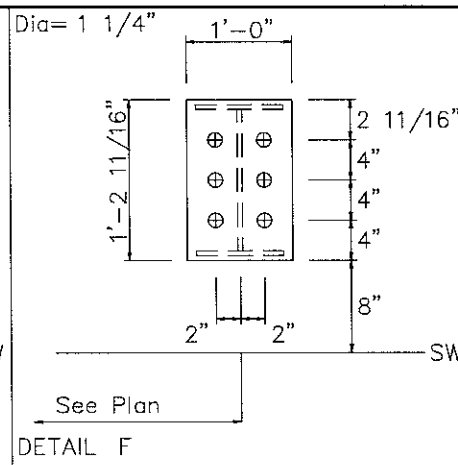
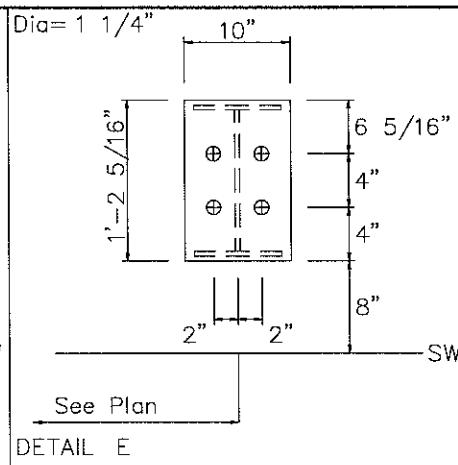
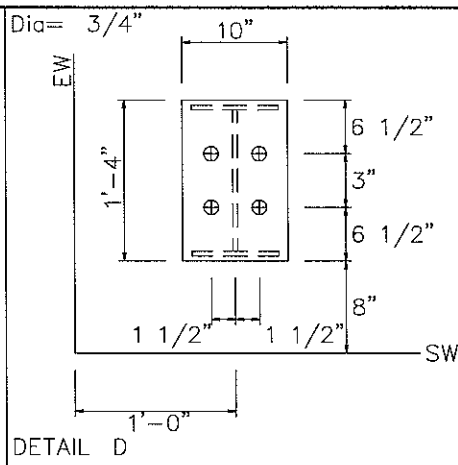
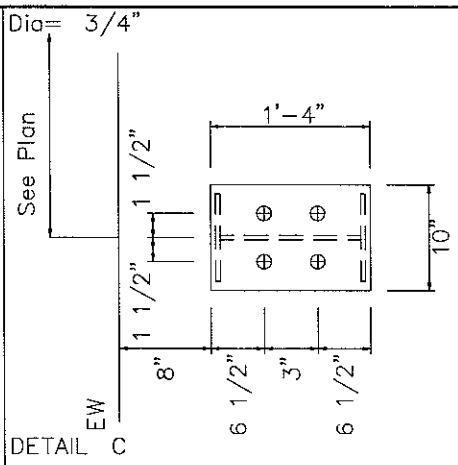
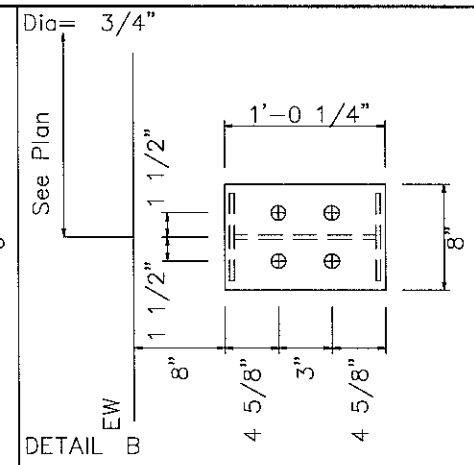
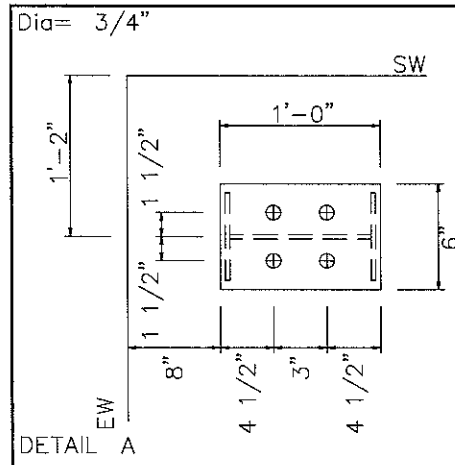
FOR APPROVAL: THESE DRAWINGS, BEING FOR APPROVAL, ARE BY DEFINITION NOT FINAL, AND ARE FOR CONCEPTUAL REPRESENTATION ONLY. THEIR PURPOSE IS TO CONFIRM PROPER INTERPRETATION OF THE PROJECT DOCUMENTS. ONLY DRAWINGS ISSUED "FOR CONSTRUCTION" CAN BE CONSIDERED AS COMPLETE.

FOR PERMIT: THESE DRAWINGS, BEING FOR PERMIT, ARE BY DEFINITION NOT FINAL. ONLY DRAWINGS ISSUED "FOR CONSTRUCTION" CAN BE CONSIDERED AS COMPLETE.

FOR CONSTRUCTION: FINAL DRAWINGS.



T. JAMES EISENMAN JR.
 No. 9637
 LICENSED PROFESSIONAL ENGINEER
 JUN 18 2012



114 ROSEMONT LANE, IMLER, PA 16655 (814)276-9511

PORTLAND SPORTS REALTY, LLC

120'-0" x 150'-0" x 34'-0"

DATE: 5/31/12

ENG: JKB DWN: DJH APPD: JKB

REVISION: 0

F.O. 17096

PORTLAND SPORTS REALTY, LLC

REV.	DESCRIPTION	DATE

DRAWING STATUS

FOR APPROVAL: THESE DRAWINGS, BEING FOR APPROVAL, ARE BY DEFINITION NOT FINAL, AND ARE FOR CONCEPTUAL REPRESENTATION ONLY. THEIR PURPOSE IS TO CONFIRM PROPER INTERPRETATION OF THE PROJECT DOCUMENTS. ONLY DRAWINGS ISSUED "FOR CONSTRUCTION" CAN BE CONSIDERED AS COMPLETE.

FOR PERMIT: THESE DRAWINGS, BEING FOR PERMIT, ARE BY DEFINITION NOT FINAL. ONLY DRAWINGS ISSUED "FOR CONSTRUCTION" CAN BE CONSIDERED AS COMPLETE.

FOR CONSTRUCTION: FINAL DRAWINGS.

ADDITIONAL LOADING INFORMATION

Mezzanine Loads:

Dead Load _____ PSF

Collateral Load _____ PSF

Live Load _____ PSF

Crane Information:

Crane Type _____

CMAA Service Class _____

Crane capacity = _____ Kips

Bridge Weight = _____ Kips

Hoist/Trolley Weight = _____ Kips

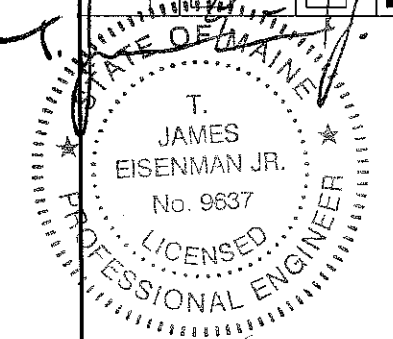
Wheel Spacing = _____ Ft.

Additional Loads:

1. _____

2. _____

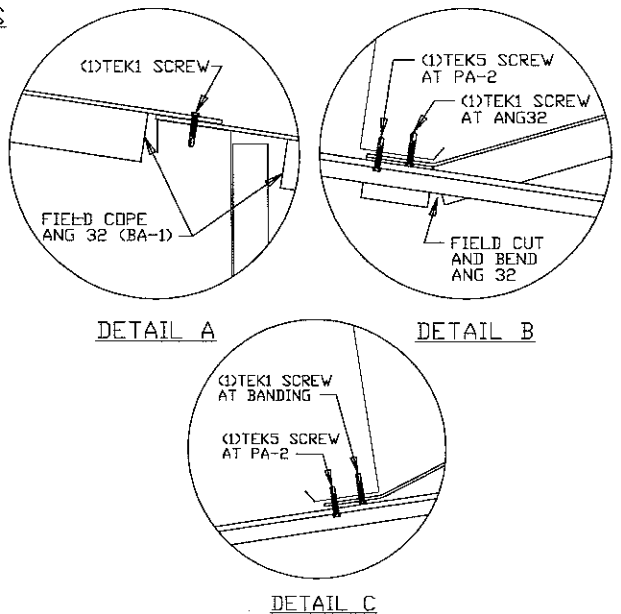
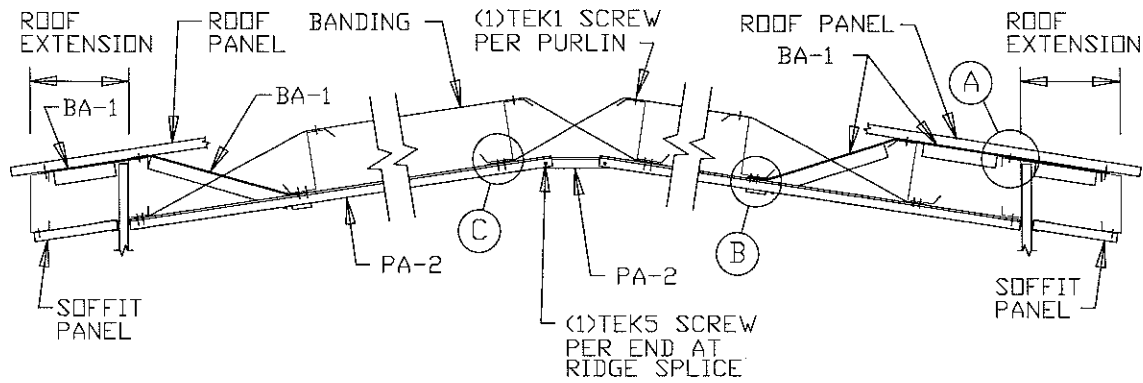
3. _____



JUN 18 2012

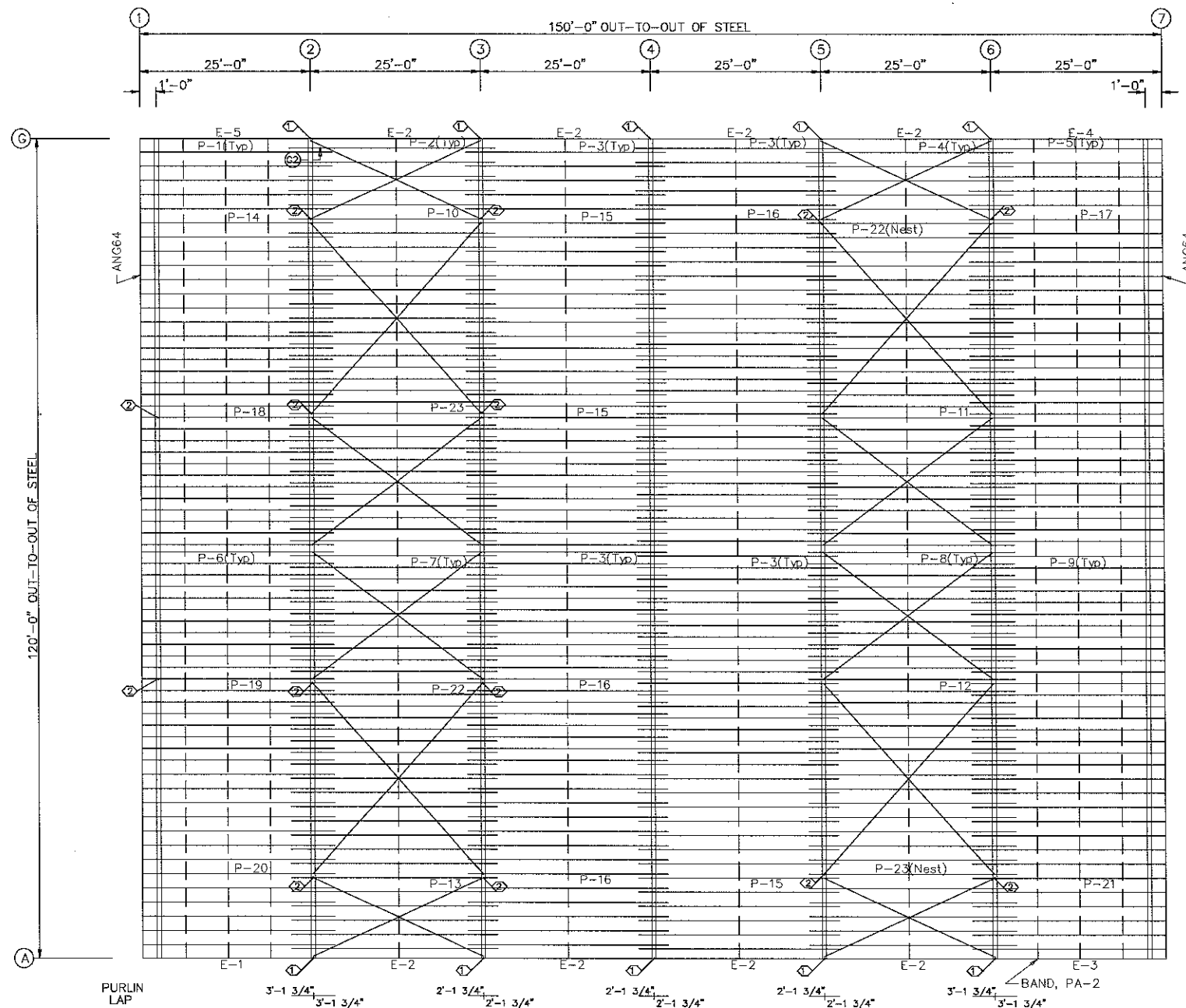
STANDARD PURLIN BRACING DETAIL FOR STANDING SEAM ROOF PANELS

NOTE 1: SPACE BANDING EVENLY ACROSS BAYS AS SHOWN.
 NOTE 2: SPLICE PA-2 USING A 4 1/2" LAP AND (5) TEK5 SCREWS EVENLY SPACED.



CONDITION 1:
FIRST PURLIN SPACE
GREATER THAN 2'-0"

CONDITION 2:
FIRST PURLIN SPACE
LESS THAN OR EQUAL TO 2'-0"



ROOF FRAMING PLAN

MEMBER TABLE
ROOF PLAN

QUAN	MARK	PART	LENGTH
30	P-1	10X25Z14	28'-1 1/2"
30	P-2	10X25Z16	30'-3 1/2"
122	P-3	10X25Z16	29'-3 1/2"
30	P-4	10X25Z13	30'-3 1/2"
31	P-5	10X25Z10	28'-1 1/2"
30	P-6	10X25Z14	28'-1 1/2"
30	P-7	10X25Z16	30'-3 1/2"
30	P-8	10X25Z13	30'-3 1/2"
31	P-9	10X25Z10	28'-1 1/2"
1	P-10	10X25Z10	30'-3 1/2"
1	P-11	10X25Z12	30'-3 1/2"
1	P-12	10X25Z12	30'-3 1/2"
1	P-13	10X25Z10	30'-3 1/2"
1	P-14	10X25Z14	28'-1 1/2"
3	P-15	10X25Z16	29'-3 1/2"
3	P-16	10X25Z16	29'-3 1/2"
1	P-17	10X25Z10	28'-1 1/2"
1	P-18	10X25Z14	28'-1 1/2"
1	P-19	10X25Z14	28'-1 1/2"
1	P-20	10X25Z14	28'-1 1/2"
1	P-21	10X25Z10	28'-1 1/2"
3	P-22	10X25Z13	30'-3 1/2"
3	P-23	10X25Z13	30'-3 1/2"
1	E-1	10X35E16	24'-11 1/2"
8	E-2	10X35E16	24'-11 1/2"
1	E-3	10X35E13	24'-11 1/2"
1	E-4	10X35E13	24'-11 1/2"
1	E-5	10X35E16	24'-11 1/2"
8	CB-10	CABLE500	23'-11 1/2"
8	CB-11	CABLE500	34'-9 13/16"
6	CB-12	CABLE250	29'-3 13/16"
2	CB-13	CABLE250	29'-3 3/4"

SPECIAL BOLTS
ROOF PLAN

ID	QUAN	TYPE	DIA	LENGTH	WASH
1	4	A325	1/2"	1 1/2"	0
2	4	A325	1/2"	1 1/4"	0



114 ROSEMONT LANE, MILLER, PA 16655 (814)276-9611

PORTLAND SPORTS REALTY, LLC

120'-0" x 150'-0" x 34'-0"

DATE: 5/31/12

ENG: JKB DWN: KAH APPD: JKB

REVISION: 0

F.O. 17096

PORTLAND SPORTS REALTY, LLC

REVISION HISTORY

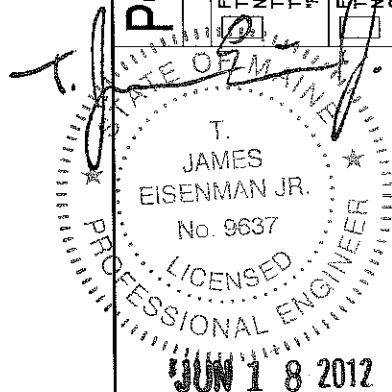
REV.	DESCRIPTION	DATE

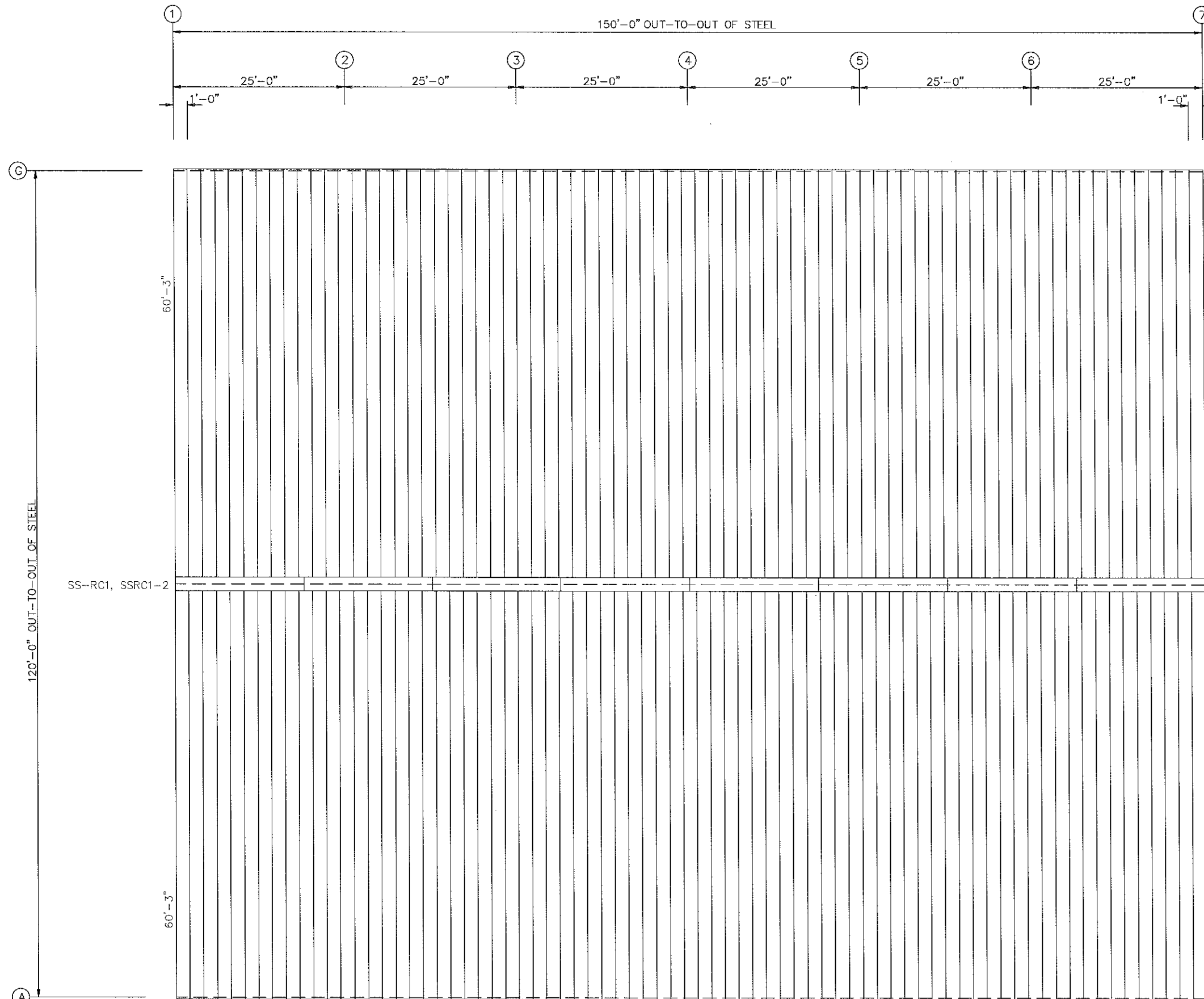
DRAWING STATUS

FOR APPROVAL: THESE DRAWINGS, BEING FOR APPROVAL, ARE BY DEFINITION NOT FINAL, AND ARE FOR CONCEPTUAL REPRESENTATION ONLY. THEIR PURPOSE IS TO CONFIRM PROPER INTERPRETATION OF THE PROJECT DOCUMENTS. ONLY DRAWINGS ISSUED "FOR CONSTRUCTION" CAN BE CONSIDERED AS COMPLETE.

FOR PERMIT: THESE DRAWINGS, BEING FOR PERMIT, ARE BY DEFINITION NOT FINAL. ONLY DRAWINGS ISSUED "FOR CONSTRUCTION" CAN BE CONSIDERED AS COMPLETE.

FOR CONSTRUCTION: FINAL DRAWINGS.





ROOF SHEETING PLAN
 PANELS: 24 Ga. L4 - Galvalume



114 ROSEMONT LANE, MILLER, PA 16655 (814)276-9611

PORTLAND SPORTS REALTY, LLC

120'-0" x 150'-0" x 34'-0"

DATE: 5/31/12

ENG: JKB

DWN: KAH

APPD: JKB

F.O. 17096

PORTLAND SPORTS REALTY, LLC

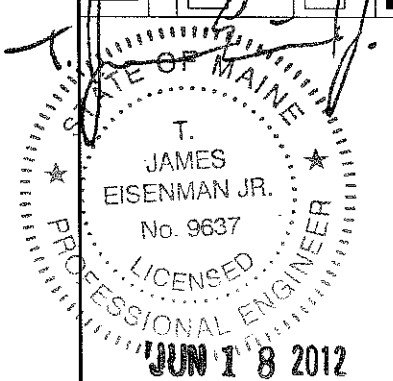
REV.	DESCRIPTION	DATE

DRAWING STATUS

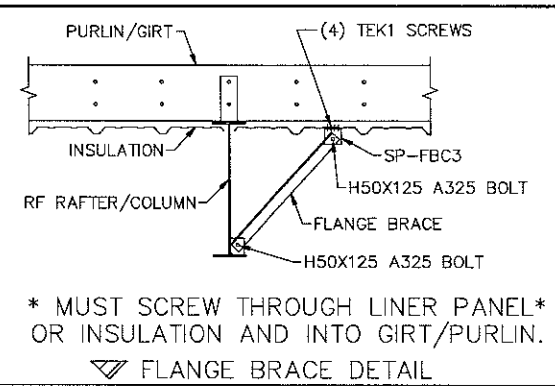
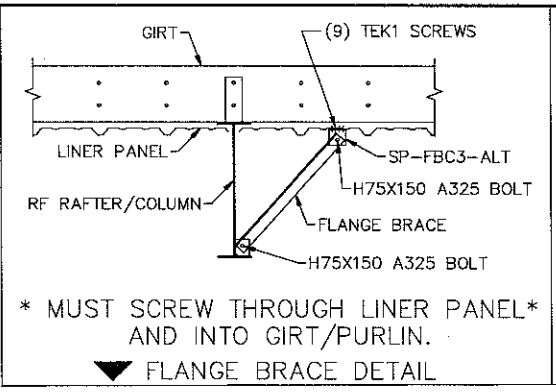
FOR APPROVAL: THESE DRAWINGS, BEING FOR APPROVAL, ARE BY DEFINITION NOT FINAL, AND ARE FOR CONCEPTUAL REPRESENTATION ONLY. THEIR PURPOSE IS TO CONFIRM PROPER INTERPRETATION OF THE PROJECT DOCUMENTS. ONLY DRAWINGS ISSUED "FOR CONSTRUCTION" CAN BE CONSIDERED AS COMPLETE.

FOR PERMIT: THESE DRAWINGS, BEING FOR PERMIT, ARE BY DEFINITION NOT FINAL. ONLY DRAWINGS ISSUED "FOR CONSTRUCTION" CAN BE CONSIDERED AS COMPLETE.

FOR CONSTRUCTION: FINAL DRAWINGS.

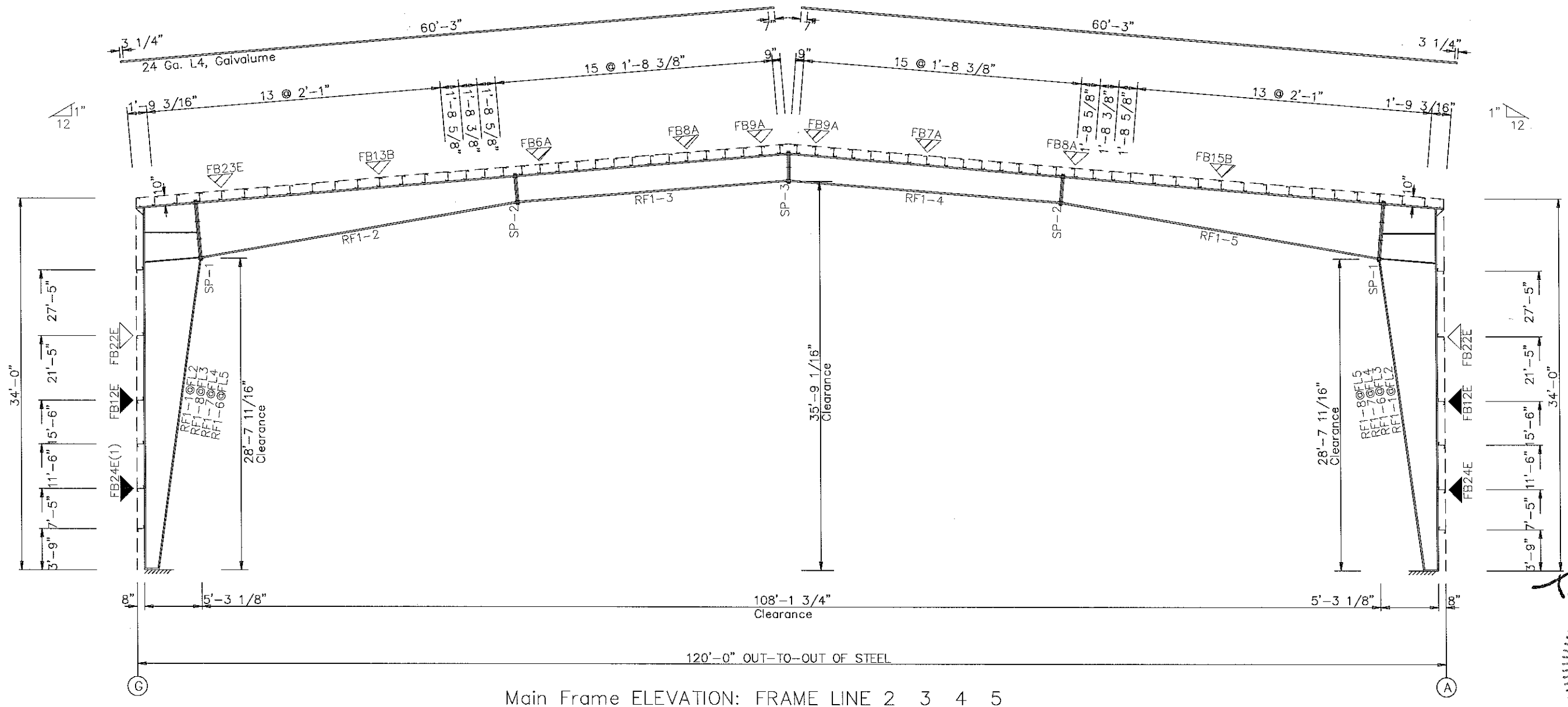


SPLICE BOLT TABLE						
Mark	Qty		Int	Type	Dia	Length
	Top	Bot				
SP-1	4	4	4	A325	1.500	4.25
SP-2	4	4	0	A325	1.250	3.50
SP-3	4	4	2	A325	1.250	3.50



Mark	Web Depth		Web Thick	Plate Length	Outside Flange			Inside Flange		
	Start	End			W	Thk	Length	W	Thk	Length
RF1-1	13.3/47.9	47.9/62.0	0.313	240.0	10 x 3/8"	x 397.6	10 x 5/8"	x 121.1	10 x 3/4"	x 220.4
RF1-2	59.0/38.0	38.0/27.1	0.375	231.7	10 x 3/8"	x 231.7	10 x 5/8"	x 51.9	10 x 3/4"	x 60.2
RF1-3	27.0/27.8	27.8/28.0	0.219	240.1	10 x 1"	x 300.1	10 x 1/2"	x 240.0	10 x 3/8"	x 57.7
RF1-4	28.0/27.8	27.8/27.0	0.219	240.1	10 x 1"	x 300.1	10 x 1/2"	x 240.0	10 x 3/8"	x 57.7
RF1-5	27.1/38.0	38.0/59.0	0.313	231.7	10 x 1/2"	x 120.0	10 x 5/8"	x 60.2	10 x 3/4"	x 220.4
RF1-6	13.3/47.9	47.9/62.0	0.313	240.0	10 x 3/8"	x 397.6	10 x 5/8"	x 121.1	10 x 3/4"	x 220.4
RF1-7	13.3/47.9	47.9/62.0	0.313	240.0	10 x 3/8"	x 397.6	10 x 5/8"	x 121.1	10 x 3/4"	x 220.4
RF1-8	13.3/47.9	47.9/62.0	0.313	240.0	10 x 3/8"	x 397.6	10 x 5/8"	x 121.1	10 x 3/4"	x 220.4

▽ FLANGE BRACES: Both Sides(U.N.)
 FBxxB(1)
 B - L20X3/16
 E - L30X1/4
 A - L15X1/8



Main Frame ELEVATION: FRAME LINE 2 3 4 5

- GENERAL NOTES:
1. See Detail Sheets for Connection Information.
 2. See Shipping List for Flange Brace Lengths.

114 ROSEMONT LANE, MILLER, PA 16655 (814)276-9911
 PORTLAND SPORTS REALTY, LLC
 120'-0" x 150'-0" x 34'-0"
 DATE: 5/31/12 REVISION: 0
 ENG: JKB DWN: KAH APPD: JKB

F.O. 17096

REVISION HISTORY	
REV.	DESCRIPTION

DRAWING STATUS

FOR APPROVAL: THESE DRAWINGS, BEING FOR APPROVAL, ARE BY DEFINITION NOT FINAL, AND ARE FOR CONCEPTUAL REPRESENTATION ONLY. THEIR PURPOSE IS TO CONFIRM PROPER INTERPRETATION OF THE PROJECT DOCUMENTS. ONLY DRAWINGS ISSUED "FOR CONSTRUCTION" CAN BE CONSIDERED AS COMPLETE.

FOR PERMIT: THESE DRAWINGS, BEING FOR PERMIT, ARE BY DEFINITION NOT FINAL. ONLY DRAWINGS ISSUED "FOR CONSTRUCTION" CAN BE CONSIDERED AS COMPLETE.

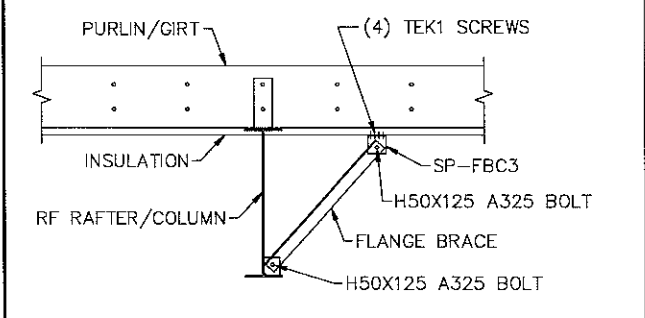
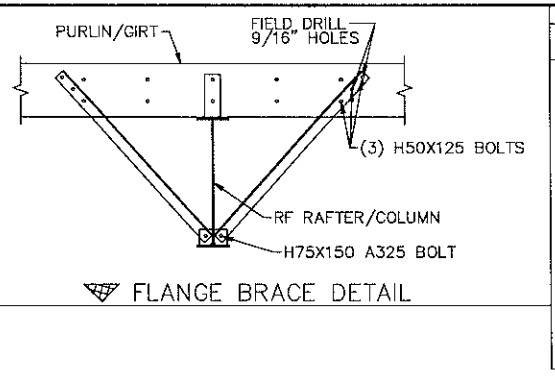
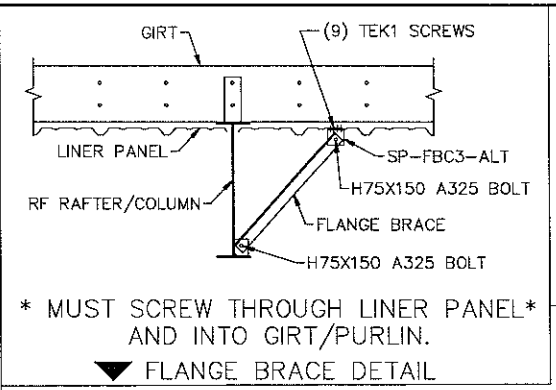
FOR CONSTRUCTION: FINAL DRAWINGS.

PORTLAND SPORTS REALTY, LLC

STATE OF PENNSYLVANIA
 T. JAMES EISENMAN JR.
 No. 9637
 LICENSED PROFESSIONAL ENGINEER
 JUN 18 2012

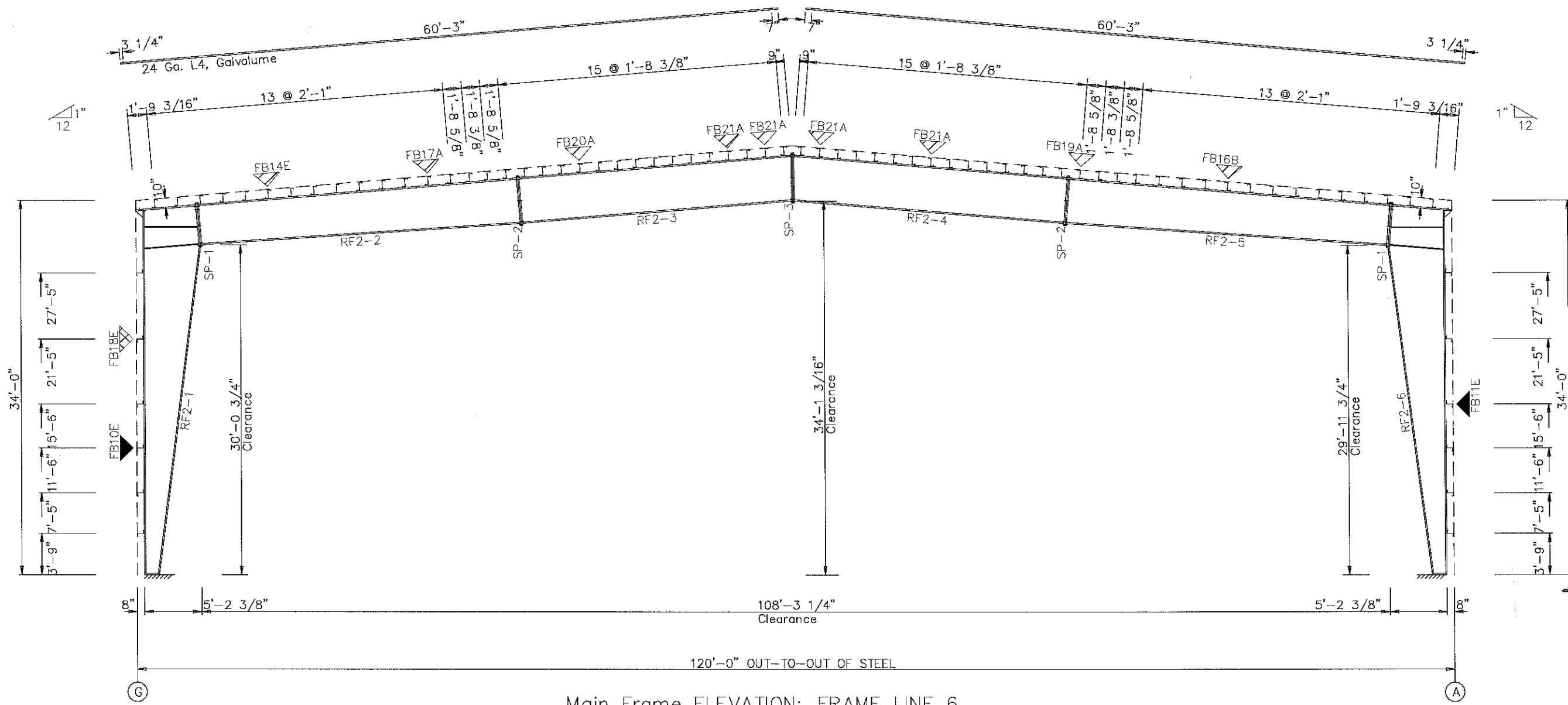
SPLICE BOLT TABLE

Mark	Qty		Int	Type	Dia	Length
	Top	Bot				
SP-1	6	4	2	A325	1.500	4.25
SP-2	4	4	2	A325	1.250	3.50
SP-3	4	4	2	A325	1.500	4.25



MEMBER	Mark	Web Depth		Web Thick	Plate Length	Outside Flange			Inside Flange		
		Start	End			W	Thk	Length	W	Thk	Length
RF2-1		13.3	29.4	0.313	120.0	12	3/8"	x 396.9	12	1"	x 358.3
		29.4	59.2	0.375	221.7	12	1"	x 65.6			
		59.2	61.0	0.375	60.0						
RF2-2		41.0	45.7	0.375	274.0	12	1"	x 51.0	12	1"	x 111.0
		45.7	47.0	0.375	77.0	12	3/8"	x 180.0	12	1 1/2"	x 120.0
RF2-3		47.0	47.0	0.313	120.0	10	1/2"	x 120.0	10	3/8"	x 120.0
		47.0	47.0	0.250	180.0	10	3/4"	x 120.0	10	1/2"	x 176.0
RF2-4		47.0	47.0	0.250	180.0	10	1"	x 180.0	10	1 1/2"	x 176.0
		47.0	47.0	0.313	120.0	10	3/4"	x 120.0	10	3/8"	x 120.0
RF2-5		47.0	45.9	0.375	77.1	12	1 1/2"	x 120.0	12	3/8"	x 120.0
		45.9	42.0	0.375	274.0	12	3/8"	x 180.0	12	1 1/2"	x 120.0
RF2-6		61.0	59.3	0.375	60.0	12	3/4"	x 65.6	12	1"	x 51.1
		59.3	29.5	0.375	221.7	12	3/8"	x 396.9			
		29.5	13.3	0.313	120.0						

▽ FLANGE BRACES: Both Sides(U.N.)
 FBxxE(1)
 E - L30X1/4
 A - L15X1/8
 B - L20X3/16



- GENERAL NOTES:**
- See Detail Sheets for Connection Information.
 - See Shipping List for Flange Brace Lengths.

114 ROSEMONT LANE, MILLER, PA 16655 (814)276-9611
PORTLAND SPORTS REALTY, LLC
 120'-0" x 150'-0" x 34'-0"
 DATE: 5/31/12
 ENG: JKB
 DWN: KAH
 APPD: JKB
 REVISION: 0

F.O. 17096

PORTLAND SPORTS REALTY, LLC

DRAWING STATUS

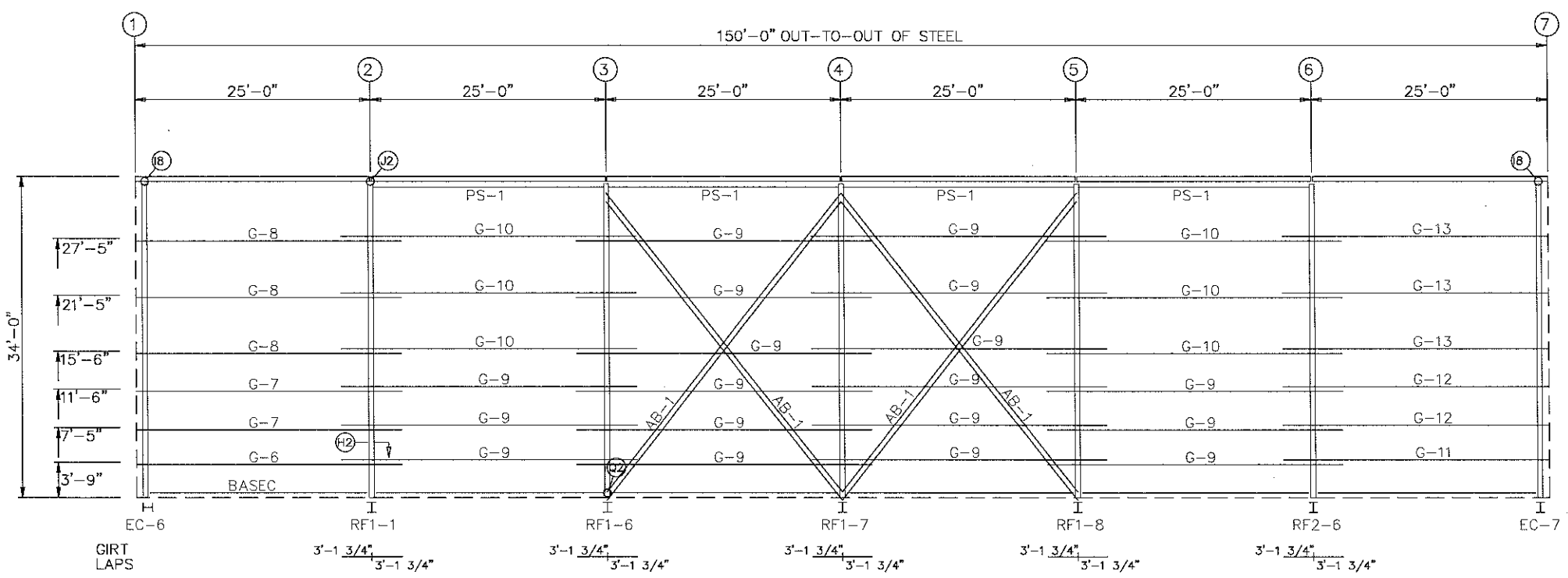
REVISION HISTORY

FOR APPROVAL: THESE DRAWINGS, BEING FOR APPROVAL, ARE BY DEFINITION NOT FINAL, AND ARE FOR CONCEPTUAL REPRESENTATION ONLY. THEIR PURPOSE IS TO CONFIRM PROPER INTERPRETATION OF THE PROJECT DOCUMENTS. ONLY DRAWINGS ISSUED "FOR CONSTRUCTION" CAN BE CONSIDERED AS COMPLETE.

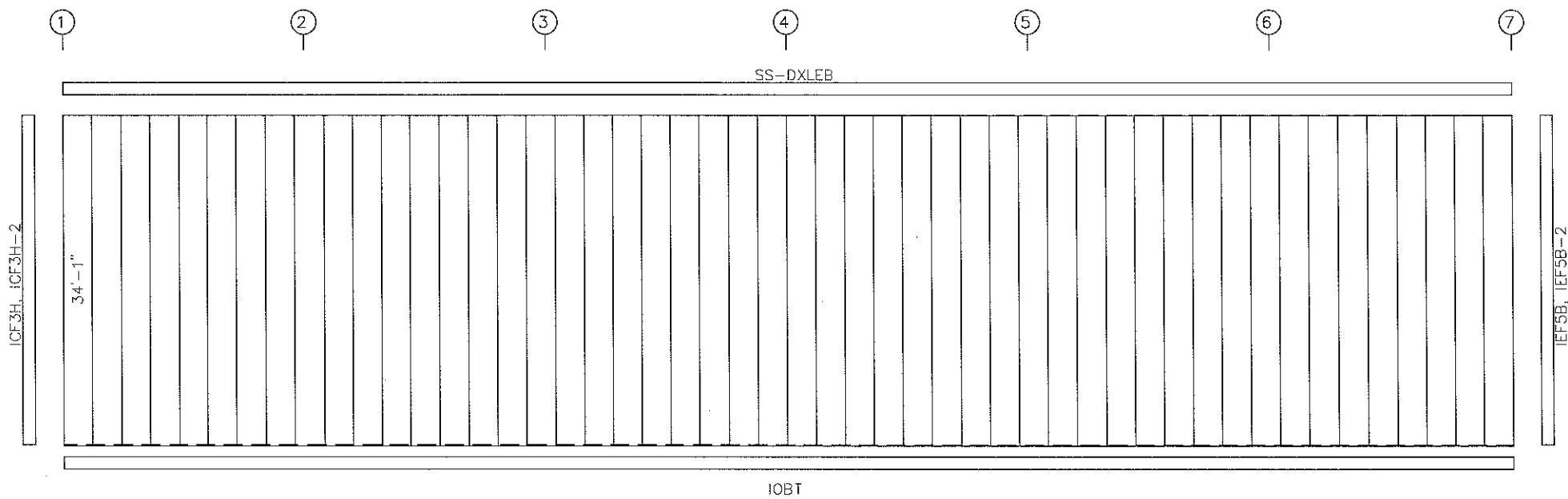
FOR PERMIT: THESE DRAWINGS, BEING FOR PERMIT, ARE BY DEFINITION NOT FINAL. ONLY DRAWINGS ISSUED "FOR CONSTRUCTION" CAN BE CONSIDERED AS COMPLETE.

FOR CONSTRUCTION: FINAL DRAWINGS.

STATE OF MAINE
 T. JAMES EISENMAN JR.
 No. 9637
 LICENSED PROFESSIONAL ENGINEER
 JUN 1 8 2012



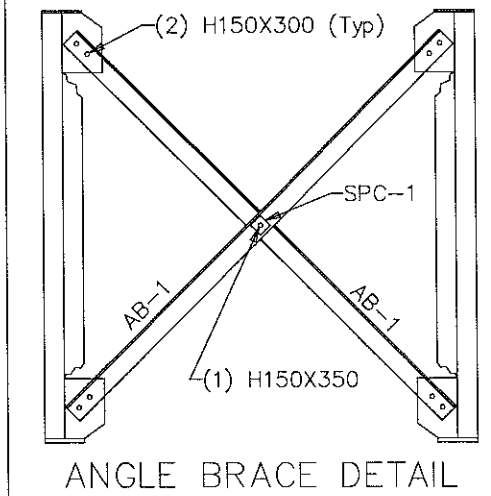
SIDEWALL FRAMING: FRAME LINE A



SIDEWALL SHEETING & TRIM: FRAME LINE A
PANELS: 26 Ga. R - Harbor Blue

BOLT TABLE FRAME LINE A				
LOCATION	QUAN	TYPE	DIA	LENGTH
PS/RF	2	A325	1/2"	1 1/2"

MEMBER TABLE FRAME LINE A			
QUAN	MARK	PART	LENGTH
1	G-6	8X25Z13	28'-1 1/2"
2	G-7	8X25Z14	28'-1 1/2"
3	G-8	8X25Z13	28'-1 1/2"
18	G-9	8X25Z16	31'-3 1/2"
6	G-10	8X25Z14	31'-3 1/2"
1	G-11	8X25Z13	28'-1 1/2"
2	G-12	8X25Z14	28'-1 1/2"
3	G-13	8X25Z13	28'-1 1/2"
4	AB-1	L6X3 1/2X1/2	40'-6 3/8"
4	PS-1	P6X19	24'-11 5/8"



ANGLE BRACE DETAIL



114 ROSEMONT LANE, MILLER, PA. 16655 (814)276-9611
PORTLAND SPORTS REALTY, LLC
120'-0" x 150'-0" x 34'-0"

F.O. 17096

REV.	DATE	DESCRIPTION

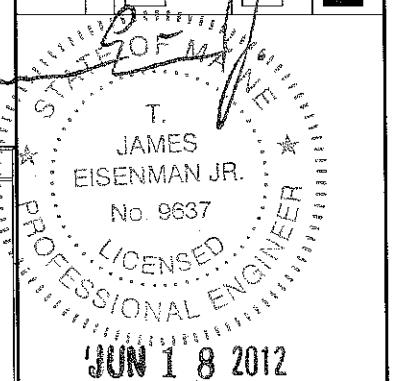
PORTLAND SPORTS REALTY, LLC

DRAWING STATUS

FOR APPROVAL: THESE DRAWINGS, BEING FOR APPROVAL, ARE BY DEFINITION NOT FINAL, AND ARE FOR CONCEPTUAL REPRESENTATION ONLY. THEIR PURPOSE IS TO CONFIRM PROPER INTERPRETATION OF THE PROJECT DOCUMENTS. ONLY DRAWINGS ISSUED "FOR CONSTRUCTION" CAN BE CONSIDERED AS COMPLETE.

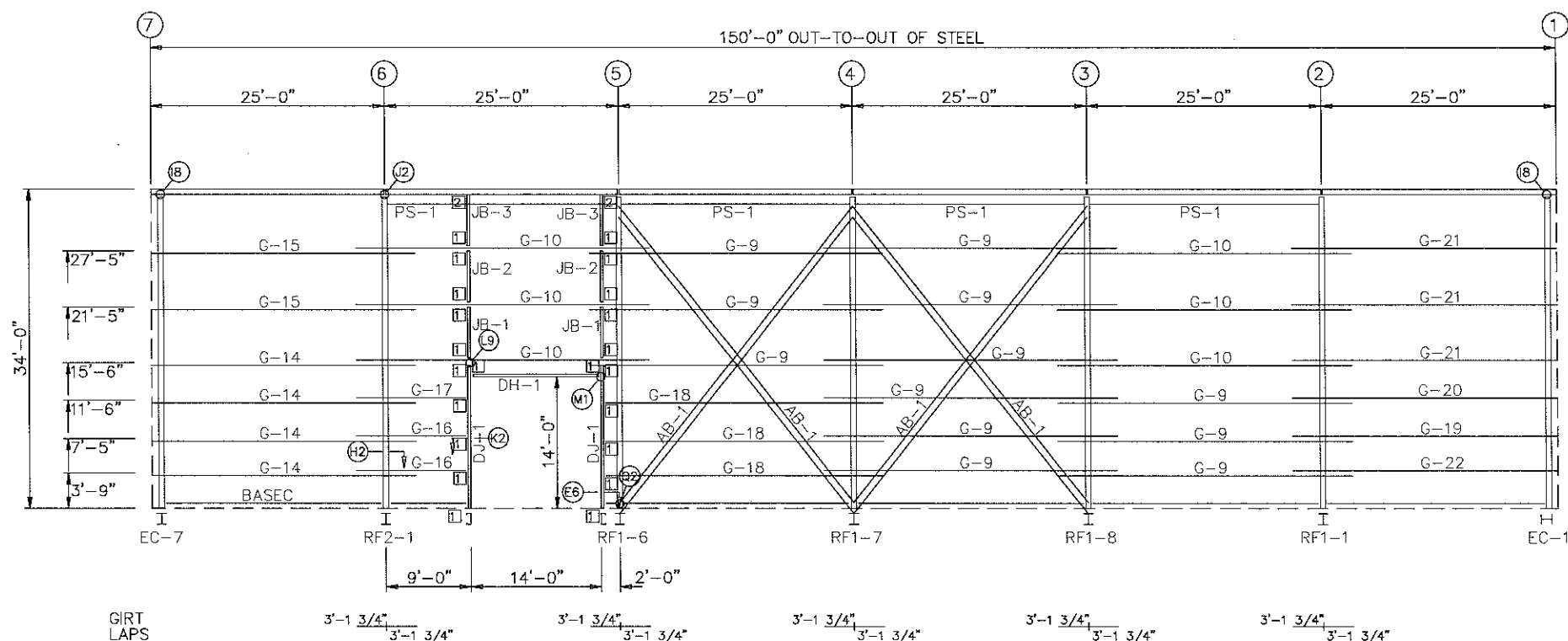
FOR PERMIT: THESE DRAWINGS, BEING FOR PERMIT, ARE BY DEFINITION NOT FINAL. ONLY DRAWINGS ISSUED "FOR CONSTRUCTION" CAN BE CONSIDERED AS COMPLETE.

FOR CONSTRUCTION: FINAL DRAWINGS.

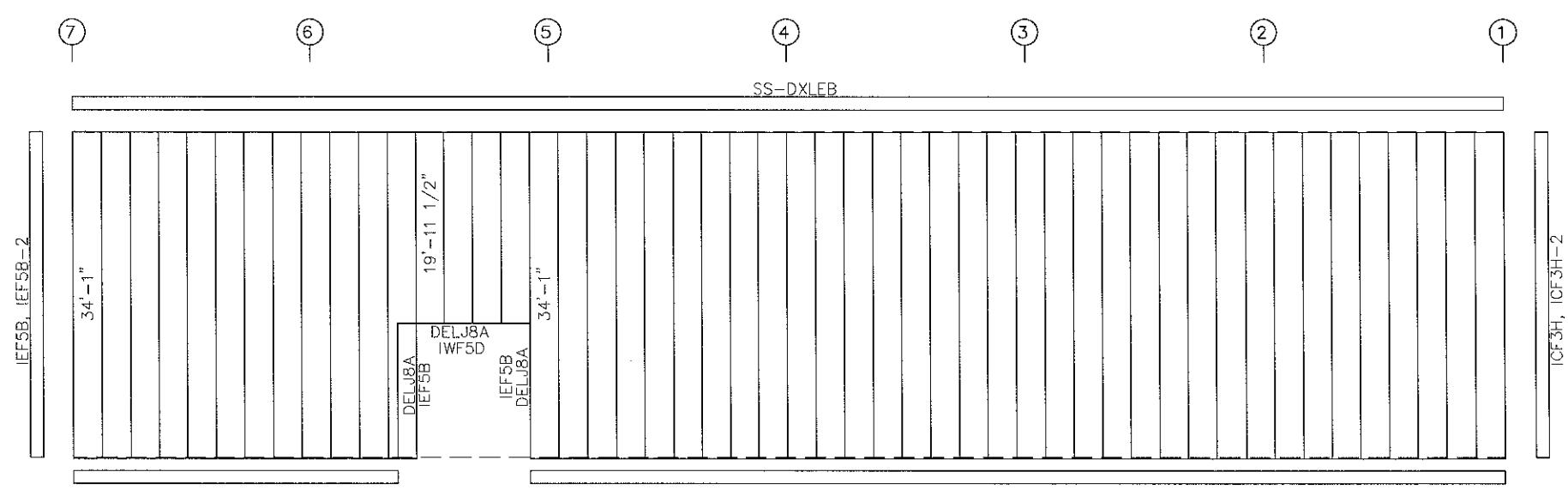


TRIM COLORS	
EAVE TRIM	= Ash Grey
BASE TRIM	= Ash Grey
DOOR TRIM	= Ash Grey
CORNER TRIM	= Ash Grey
GUTTER	=
DOWNSPOUTS	=
*SOFFIT TRIM	= SOFFIT PANEL COLOR
* WHERE APPLICABLE.	

DATE: 5/31/12
REVISION: 0
ENG: JKB
DWN: KAH
APPD: JKB



SIDEWALL FRAMING: FRAME LINE G



SIDEWALL SHEETING & TRIM: FRAME LINE G
PANELS: 26 Ga. R - Harbor Blue

BOLT TABLE
FRAME LINE G

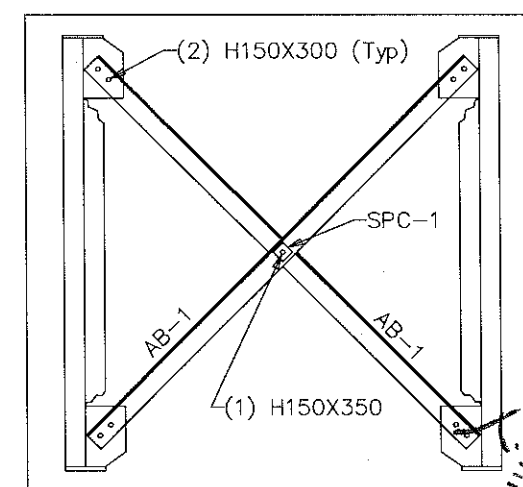
LOCATION	QUAN	TYPE	DIA	LENGTH
PS/RF	2	A325	1/2"	1 1/2"

MEMBER TABLE
FRAME LINE G

QUAN	MARK	PART	LENGTH
2	DJ-1	8X35C16	15'-5 3/4"
1	DH-1	8X35C16	14'-0"
2	JB-1	8X35C16	5'-10 1/2"
2	JB-2	8X35C16	5'-11 1/2"
2	JB-3	8X35C16	5'-7 3/4"
12	G-9	8X25Z16	31'-3 1/2"
6	G-10	8X25Z14	31'-3 1/2"
4	G-14	8X25Z14	28'-1 1/2"
2	G-15	8X25Z13	28'-1 1/2"
2	G-16	8X25Z16	11'-10"
1	G-17	8X25Z14	11'-10"
3	G-18	8X25Z16	29'-10"
1	G-19	8X25Z14	28'-1 1/2"
1	G-20	8X25Z14	28'-1 1/2"
3	G-21	8X25Z13	28'-1 1/2"
1	G-22	8X25Z13	28'-1 1/2"
4	PS-1	P6X19	24'-11 5/8"
4	AB-1	L6X3 1/2X1/2"	40'-6 3/8"

CONNECTION PLATES
FRAME LINE G

ID	QUAN	MARK/PART
1	22	JC8
2	2	JC



ANGLE BRACE DETAIL

TRIM COLORS

EAVE TRIM	=	Ash Grey
BASE TRIM	=	Ash Grey
DOOR TRIM	=	Ash Grey
CORNER TRIM	=	Ash Grey
GUTTER	=	
DOWNSPOUTS	=	
*SOFFIT TRIM	=	SOFFIT PANEL COLOR

* WHERE APPLICABLE

CORLE
114 ROSEMONT LANE, MILLER, PA 16655 (814)276-9611
PORTLAND SPORTS REALTY, LLC
120'-0" x 150'-0" x 34'-0"

F.O. 17096

REVISION HISTORY

REV.	DATE	DESCRIPTION

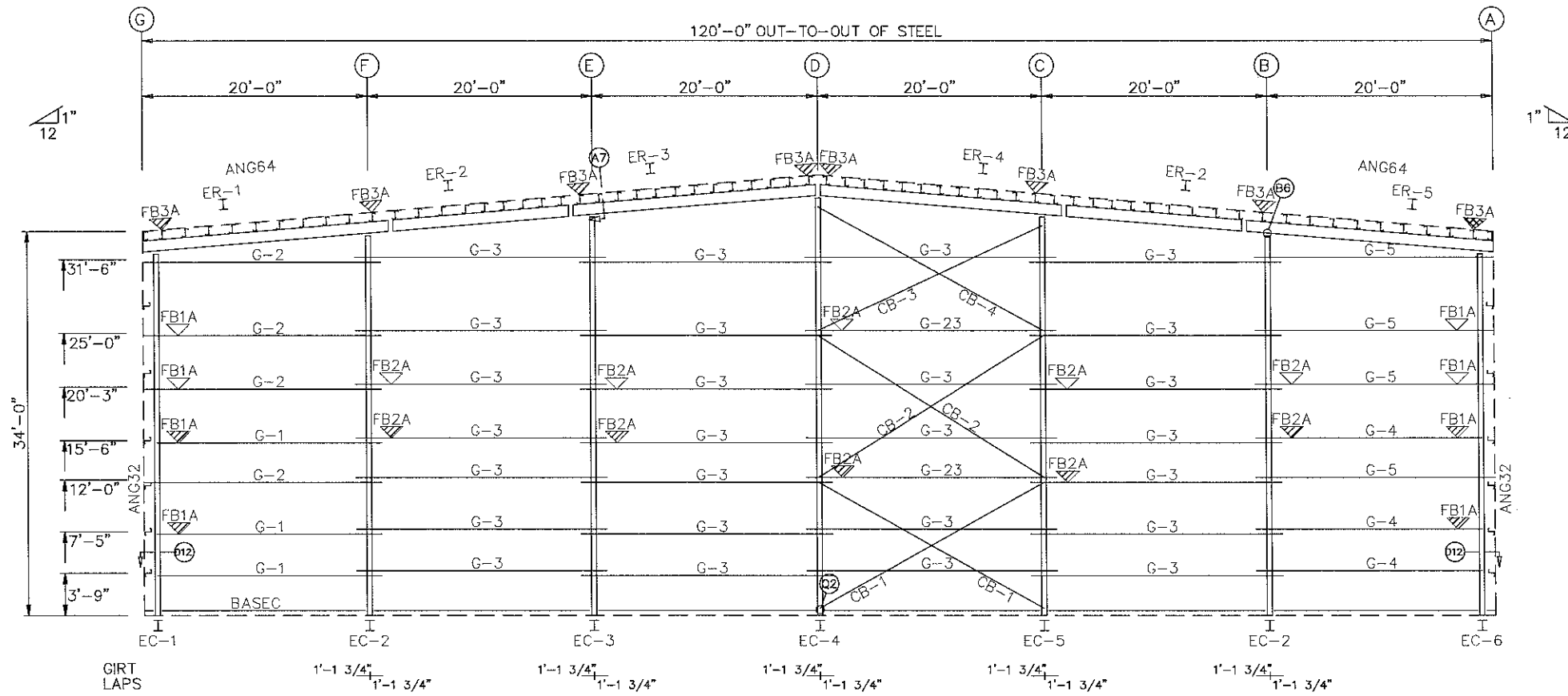
DRAWING STATUS

FOR APPROVAL: THESE DRAWINGS, BEING FOR APPROVAL, ARE BY DEFINITION NOT FINAL, AND ARE FOR CONCEPTUAL REPRESENTATION ONLY. THEIR PURPOSE IS TO CONFIRM PROPER INTERPRETATION OF THE PROJECT DOCUMENTS. ONLY DRAWINGS ISSUED "FOR CONSTRUCTION" CAN BE CONSIDERED AS COMPLETE.

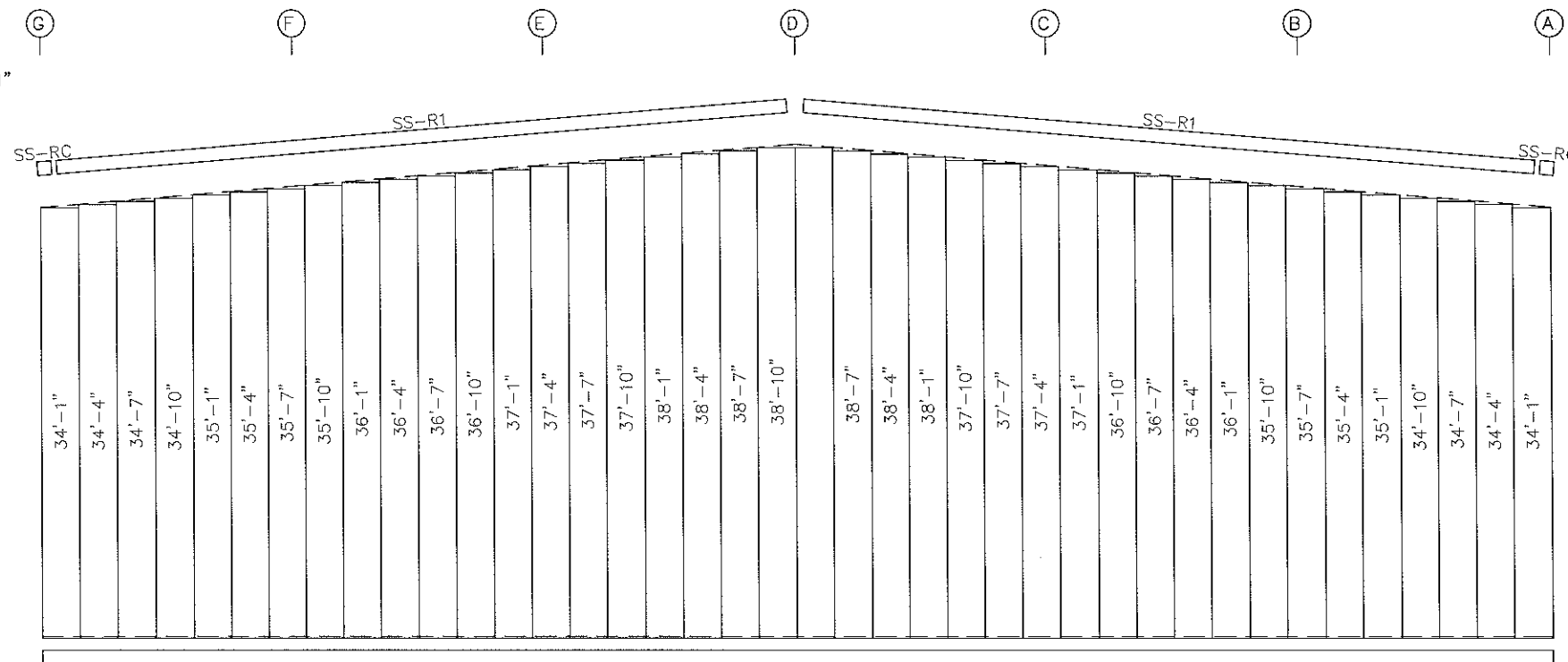
FOR PERMIT: THESE DRAWINGS, BEING FOR PERMIT, ARE BY DEFINITION NOT FINAL. ONLY DRAWINGS ISSUED "FOR CONSTRUCTION" CAN BE CONSIDERED AS COMPLETE.

FOR CONSTRUCTION: FINAL DRAWINGS.

STATE OF MAINE
T. JAMES EISENMAN JR.
No. 9637
LICENSED PROFESSIONAL ENGINEER
JUN 18 2012



ENDWALL FRAMING: FRAME LINE 1



ENDWALL SHEETING & TRIM: FRAME LINE 1

PANELS: 26 Ga. R - Harbor Blue

BOLT TABLE
FRAME LINE 1

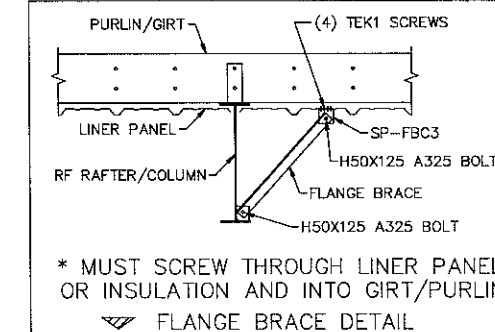
LOCATION	QUAN	TYPE	DIA	LENGTH
ER-1/ER-2	8	A325	1/2"	1 1/2"
ER-2/ER-3	8	A325	1/2"	1 1/2"
ER-3/ER-4	8	A325	1/2"	1 3/4"
ER-2/ER-4	8	A325	1/2"	1 1/2"
ER-2/ER-5	8	A325	1/2"	1 1/2"
Cor_Column/Raf	2	A325	1"	2"
EC-2/ER-1	2	A325	1"	2"
EC-3/ER-3	2	A325	1"	2"
EC-4/ER-3	2	A325	1"	2"
EC-5/ER-4	2	A325	1"	2"
EC-2/ER-5	2	A325	1"	2"

MEMBER TABLE
FRAME LINE 1

QUAN	MARK	PART	LENGTH
1	EC-1	W12X16	32'-2 3/8"
2	EC-2	W12X26	33'-9 3/16"
1	EC-3	W12X26	35'-5 3/16"
1	EC-4	W12X26	36'-10 13/16"
1	EC-5	W12X26	35'-5 3/16"
1	EC-6	W12X16	32'-2 3/8"
1	ER-1	W12X16	22'-1 11/16"
2	ER-2	W12X16	16'-0 13/16"
1	ER-3	W12X16	22'-0"
1	ER-4	W12X16	22'-0"
1	ER-5	W12X16	22'-1 11/16"
3	G-1	8X25Z16	20'-5 1/2"
4	G-2	8X25Z16	21'-1 1/2"
26	G-3	8X25Z16	22'-3 1/2"
3	G-4	8X25Z16	20'-5 1/2"
4	G-5	8X25Z16	21'-1 1/2"
2	G-23	8X25Z13	22'-3 1/2"
2	CB-1	CABLE500	20'-3"
2	CB-2	CABLE500	20'-8 7/8"
1	CB-3	CABLE500	19'-6 1/4"
1	CB-4	CABLE500	20'-2"

FLANGE BRACE TABLE
FRAME LINE 1

VID	MARK	LENGTH
1	FB3A	1'-6 1/4"
2	FB1A	1'-5 1/2"
3	FB2A	1'-5 5/8"



FLANGE BRACE DETAIL

TRIM COLORS

RAKE TRIM	= Ash Grey
BASE TRIM	= Ash Grey
DOOR TRIM	= Ash Grey
*SOFFIT TRIM	= SOFFIT PANEL COLOR
* WHERE APPLICABLE	

CORLE
114 ROSEMONT LANE, MILLER, PA 16655 (814)276-9611
PORTLAND SPORTS REALTY, LLC
120'-0" x 150'-0" x 34'-0"
DATE: 5/31/12 REVISION: 0
ENG: JKB DWN: KAH APPD: JKB

F.O. 17096

REVISION HISTORY

REV.	DATE	DESCRIPTION

PORTLAND SPORTS REALTY, LLC

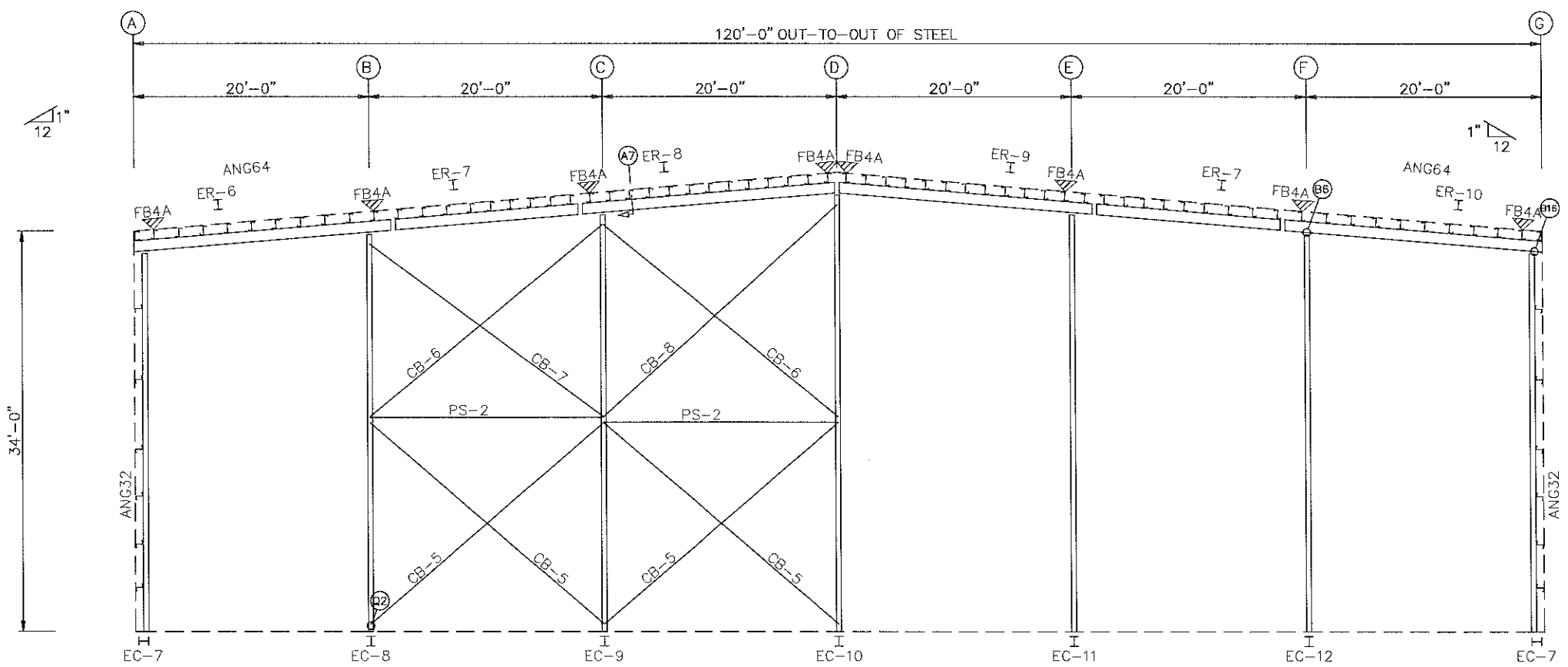
DRAWING STATUS

FOR APPROVAL: THESE DRAWINGS, BEING FOR APPROVAL, ARE BY DEFINITION NOT FINAL AND ARE FOR CONCEPTUAL REPRESENTATION ONLY. THEIR PURPOSE IS TO CONFIRM PROPER INTERPRETATION OF THE PROJECT DOCUMENTS. ONLY DRAWINGS ISSUED "FOR CONSTRUCTION" CAN BE CONSIDERED AS COMPLETE.

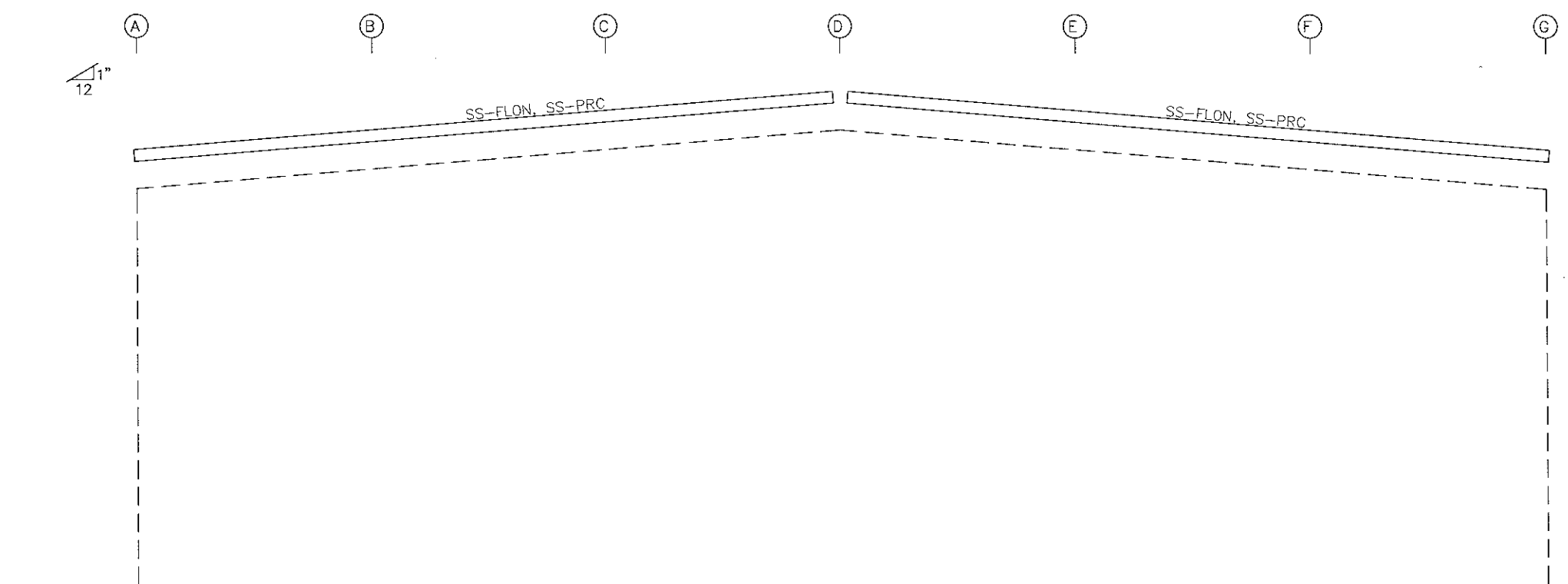
FOR PERMIT: THESE DRAWINGS, BEING FOR PERMIT, ARE BY DEFINITION NOT FINAL. ONLY DRAWINGS ISSUED "FOR CONSTRUCTION" CAN BE CONSIDERED AS COMPLETE.

FOR CONSTRUCTION: FINAL DRAWINGS.

STATE OF PAINE
T. JAMES EISENMAN JR.
No. 9637
LICENSED PROFESSIONAL ENGINEER
JUN 18 2012



ENDWALL FRAMING: FRAME LINE 7



ENDWALL SHEETING & TRIM: FRAME LINE 7

BOLT TABLE
FRAME LINE 7

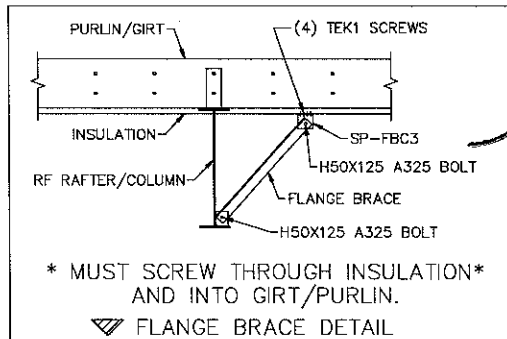
LOCATION	QUAN	TYPE	DIA	LENGTH
ER-6/ER-7	8	A325	3/4"	2"
ER-7/ER-8	8	A325	1/2"	1 3/4"
ER-8/ER-9	8	A325	3/4"	2 1/4"
ER-7/ER-9	8	A325	1/2"	1 3/4"
ER-7/ER-10	8	A325	3/4"	2"
EC-9/ER-8	4	A325	3/4"	2"
Cor_Column/Raf	4	A325	1/2"	1 1/4"
Int_Column/Raf	2	A325	1 1/4"	3"
PS/EC	2	A325	1/2"	1 1/4"

MEMBER TABLE
FRAME LINE 7

QUAN	MARK	PART	LENGTH
2	EC-7	W1610064	32'-1 15/16"
1	EC-8	W1610065	33'-7 3/16"
1	EC-9	W1610084	35'-4 5/16"
1	EC-10	W1610084	36'-8 13/16"
1	EC-11	W1610084	35'-3 3/16"
1	EC-12	W1610064	33'-7 3/16"
1	ER-6	W1406054	22'-1 11/16"
2	ER-7	W1406054	16'-0 13/16"
1	ER-8	W1406054	22'-0"
1	ER-9	W1406054	22'-0"
1	ER-10	W1406054	22'-1 11/16"
2	PS-2	P35X9	19'-8 3/4"
4	CB-5	CABLE375	24'-0 7/16"
2	CB-6	CABLE375	23'-6 1/4"
1	CB-7	CABLE375	22'-6 1/4"
1	CB-8	CABLE375	24'-5 1/2"

FLANGE BRACE TABLE
FRAME LINE 7

VID	MARK	LENGTH
1	FB4A	1'-7 7/8"



TRIM COLORS

RAKE TRIM	= Ash Grey
BASE TRIM	= Ash Grey
DOOR TRIM	= Ash Grey
*SOFFIT TRIM	= SOFFIT PANEL COLOR
* WHERE APPLICABLE	

CORLE
114 ROSEMONT LANE, MILLER, PA. 16655 (814)276-9611
PORTLAND SPORTS REALTY, LLC
120'-0" x 150'-0" x 34'-0"
DATE: 5/31/12 REVISION: 0
ENG: JKB DWN: KAH APPD: JKB

F.O. 17096

REVISION HISTORY

REV.	DESCRIPTION	DATE

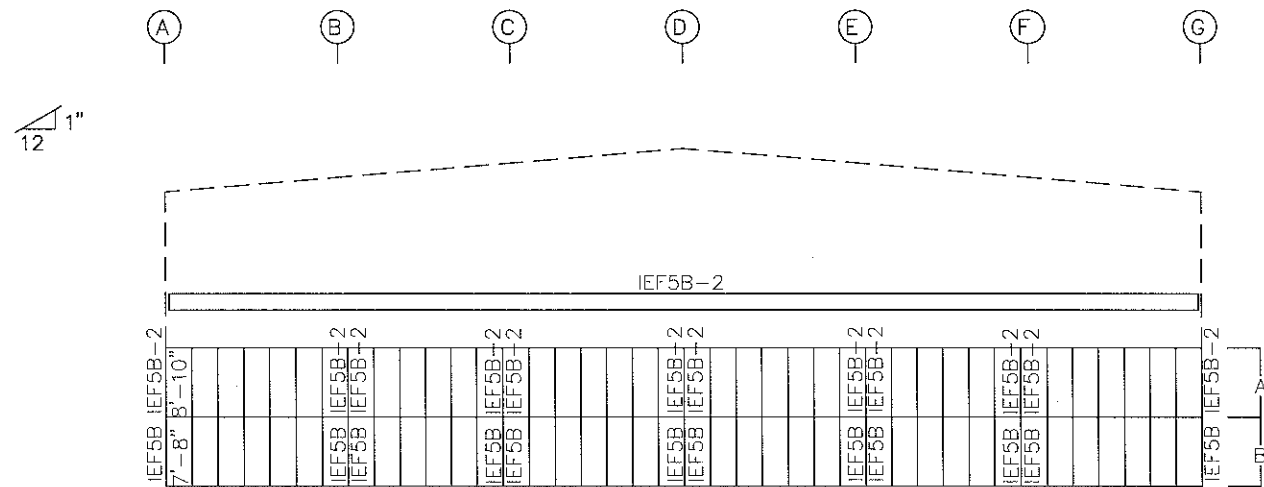
DRAWING STATUS

FOR APPROVAL: THESE DRAWINGS, BEING FOR APPROVAL, ARE BY DEFINITION NOT FINAL, AND ARE FOR CONCEPTUAL REPRESENTATION ONLY. THEIR PURPOSE IS TO CONFIRM PROPER INTERPRETATION OF THE PROJECT DOCUMENTS. ONLY DRAWINGS ISSUED "FOR CONSTRUCTION" CAN BE CONSIDERED AS COMPLETE.

FOR PERMIT: THESE DRAWINGS, BEING FOR PERMIT, ARE BY DEFINITION NOT FINAL. ONLY DRAWINGS ISSUED "FOR CONSTRUCTION" CAN BE CONSIDERED AS COMPLETE.

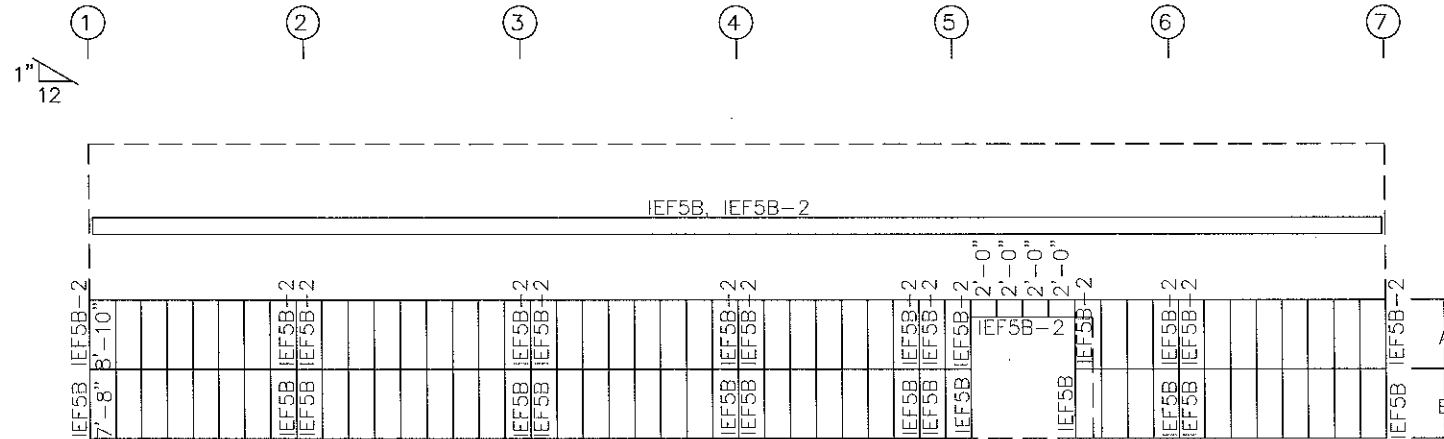
FOR CONSTRUCTION: FINAL DRAWINGS.

STATE OF MAINE
T. JAMES EISENMAN JR.
No. 9637
PROFESSIONAL ENGINEER
JUN 18 2012



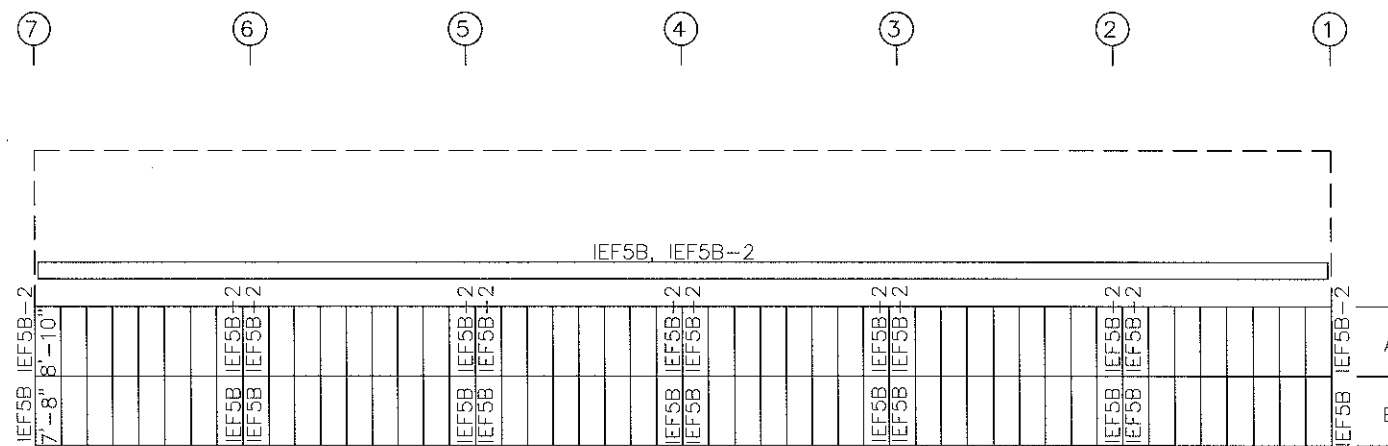
ENDWALL LINER SHEETING & TRIM: FRAME LINE 1

PANELS: 26 Ga. R - Ash Grey [A]
 PANELS: 26 Ga. R - Evergreen [B]
 (As Viewed From Inside Of Building)



SIDEWALL LINER SHEETING & TRIM: FRAME LINE G

PANELS: 26 Ga. R - Ash Grey [A]
 PANELS: 26 Ga. R - Evergreen [B]
 (As Viewed From Inside Of Building)



SIDEWALL LINER SHEETING & TRIM: FRAME LINE A

PANELS: 26 Ga. R - Ash Grey [A]
 PANELS: 26 Ga. R - Evergreen [B]
 (As Viewed From Inside Of Building)

TRIM COLORS	
LINER TRIM	= LINER PANEL COLOR



114 ROSEMONT LANE, MILLER, PA 16655 (814)276-9611

PORTLAND SPORTS REALTY, LLC

120'-0" x 150'-0" x 34'-0"

DATE: 5/31/12 REVISION: 0

ENG: JKB DWN: KAH APPD: JKB

PORTLAND SPORTS REALTY, LLC

F.O. 17096

REVISION HISTORY

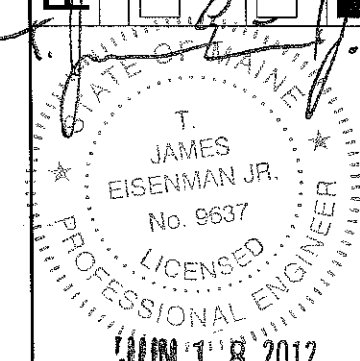
REV.	DESCRIPTION	DATE

DRAWING STATUS

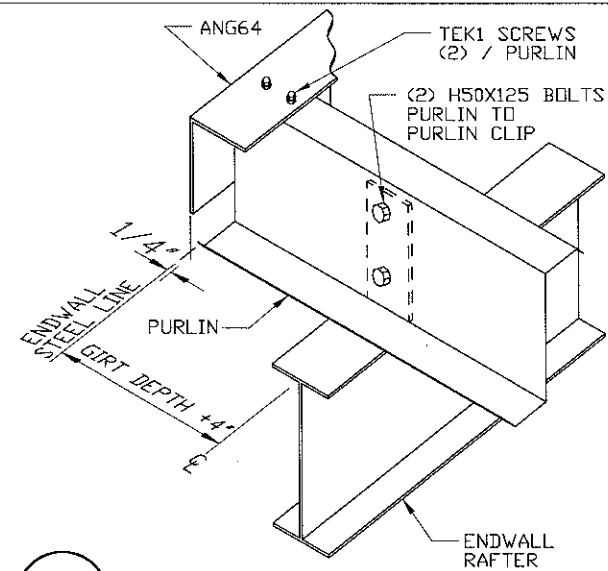
FOR APPROVAL: THESE DRAWINGS, BEING FOR APPROVAL, ARE BY DEFINITION NOT FINAL, AND ARE FOR CONCEPTUAL REPRESENTATION ONLY. THEIR PURPOSE IS TO CONFIRM PROPER INTERPRETATION OF THE PROJECT DOCUMENTS. ONLY DRAWINGS ISSUED FOR CONSTRUCTION CAN BE CONSIDERED AS COMPLETE.

FOR PERMIT: THESE DRAWINGS, BEING FOR PERMIT, ARE BY DEFINITION NOT FINAL. ONLY DRAWINGS ISSUED FOR CONSTRUCTION CAN BE CONSIDERED AS COMPLETE.

FOR CONSTRUCTION: FINAL DRAWINGS.

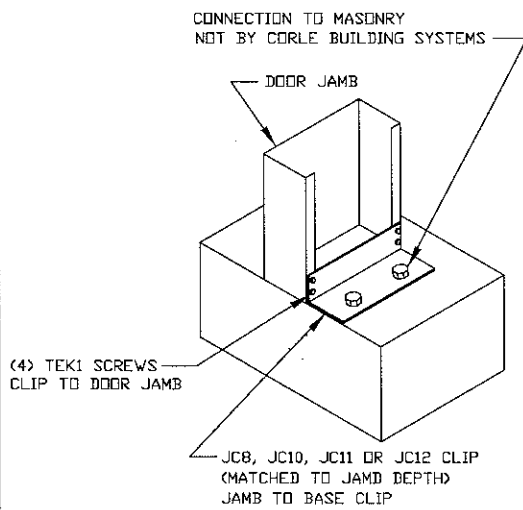


JUN 1 '8 2012



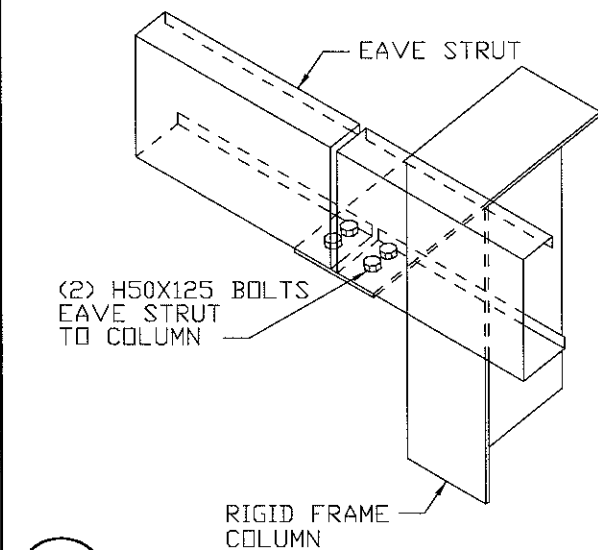
(A7)

PURLIN TO ENDWALL RAFTER CONNECTION



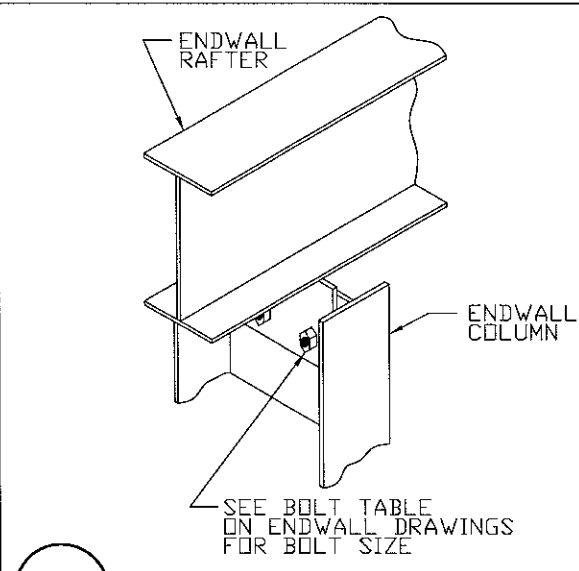
(E6)

DOOR JAMB TO FOUNDATION



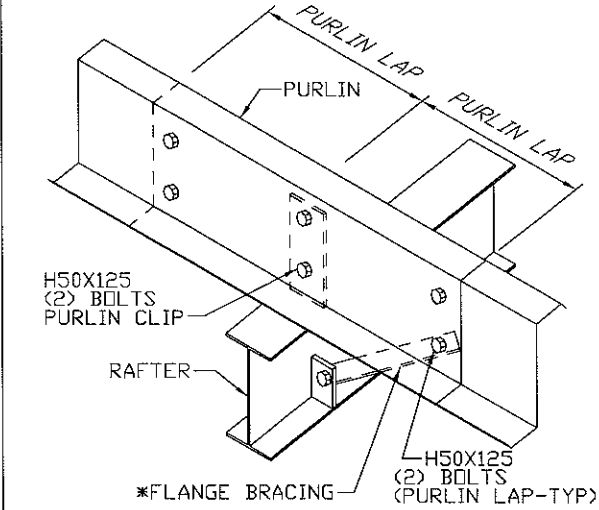
(J2)

EAVE STRUT TO RIGID FRAME BYPASS GIRT CONDITION



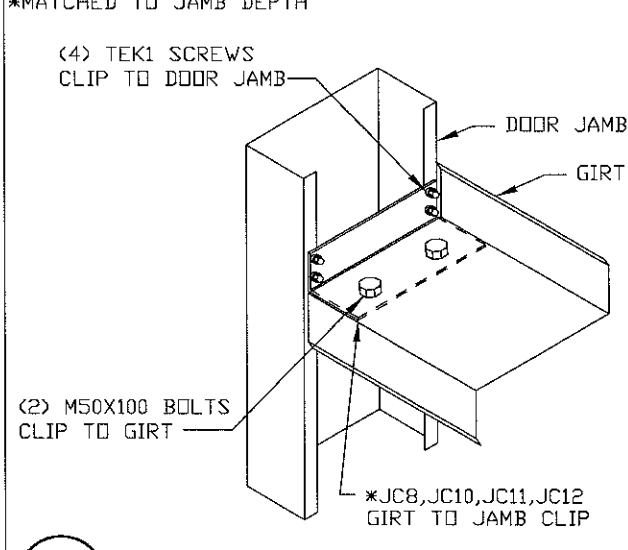
(B6)

ENDWALL COLUMN TO RAFTER CONNECTION



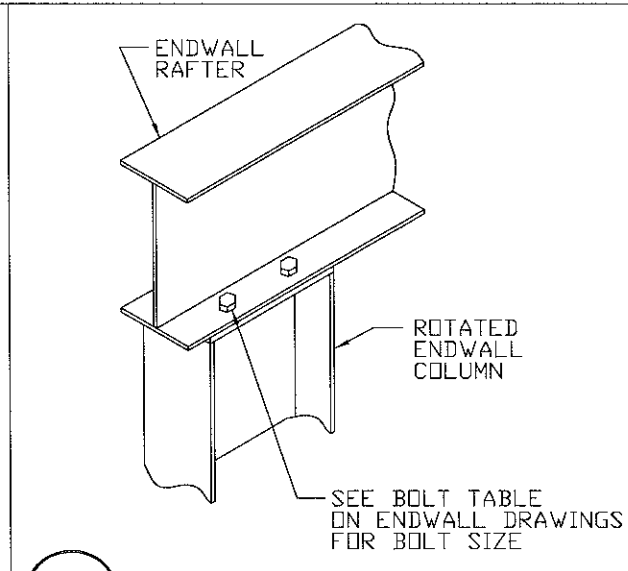
(G2)

ROOF PURLIN TO INTERIOR FRAME RAFTER



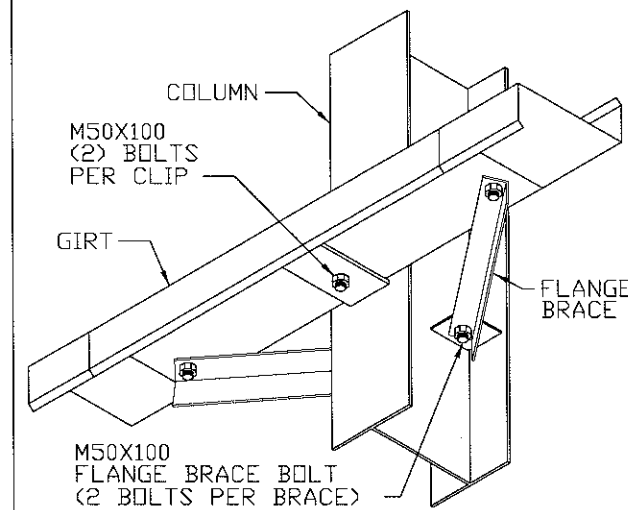
(K2)

WALL GIRT TO DOOR JAMB



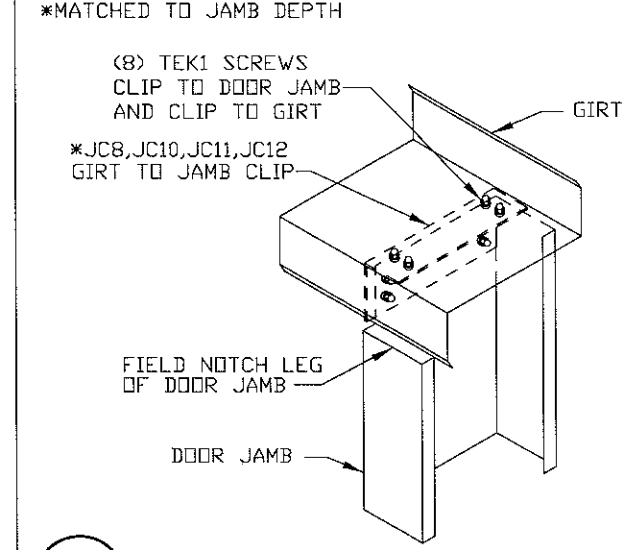
(B16)

ENDWALL COLUMN TO RAFTER CONNECTION



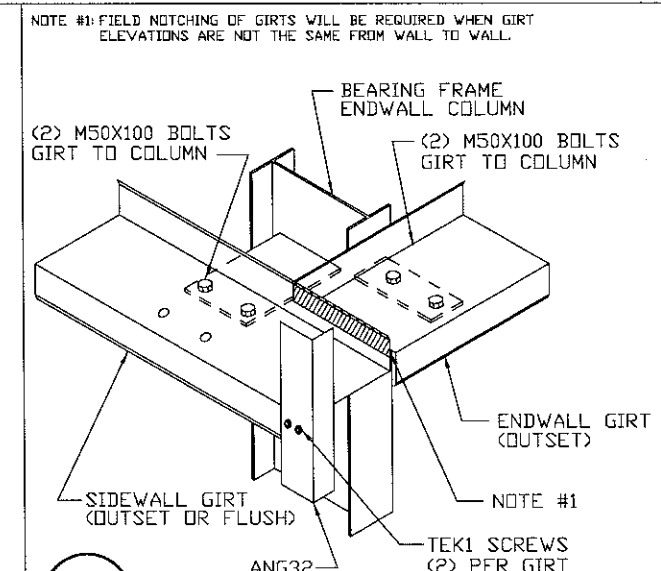
(H2)

GIRT TO COLUMN - BYPASS GIRTS



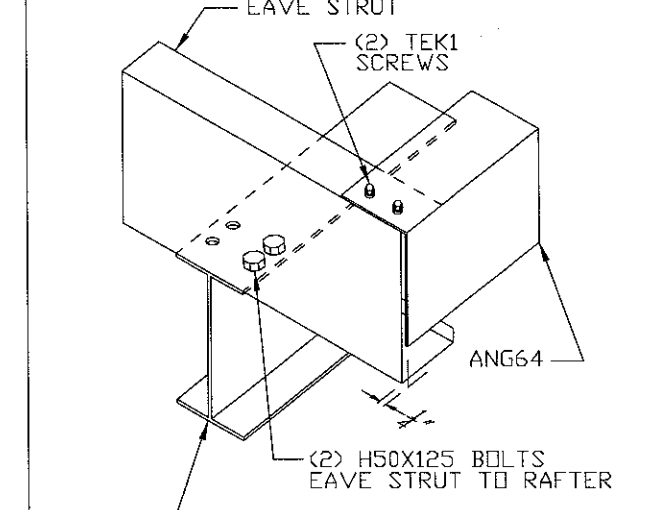
(L9)

DOOR JAMB TO WALL GIRT



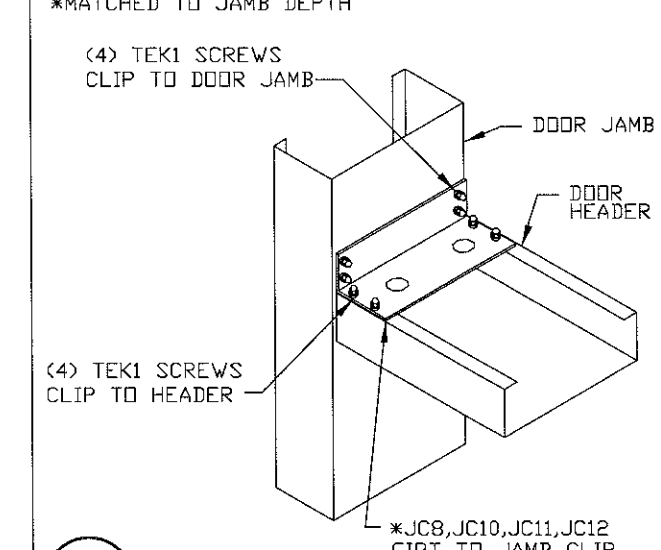
(D12)

BEARING FRAME CORNER COLUMN TO BYPASS ENDWALL GIRT



(I8)

EAVE STRUT TO ENDWALL RAFTER LOW EAVE



(M1)

DOOR HEADER TO DOOR JAMB



114 ROSEMONT LANE, MILLER, PA 16655 (814)276-9611

PORTLAND SPORTS REALTY, LLC

120'-0" x 150'-0" x 34'-0"

DATE: 5/31/12 REVISION: 0

ENG: JKB DWN: KAH APPD: JKB

F.O. 17096

PORTLAND SPORTS REALTY, LLC

REVISION HISTORY

DATE

DESCRIPTION

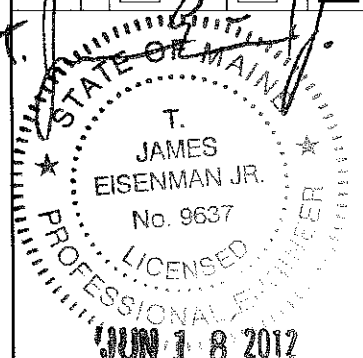
REV.

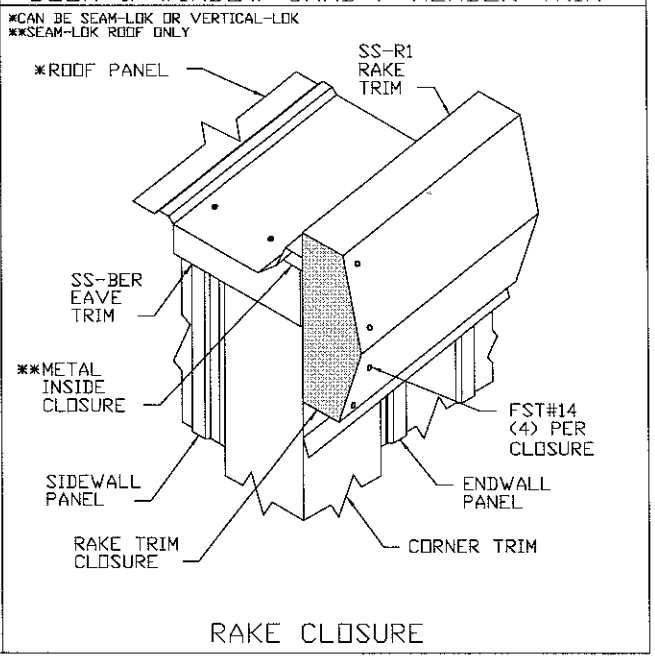
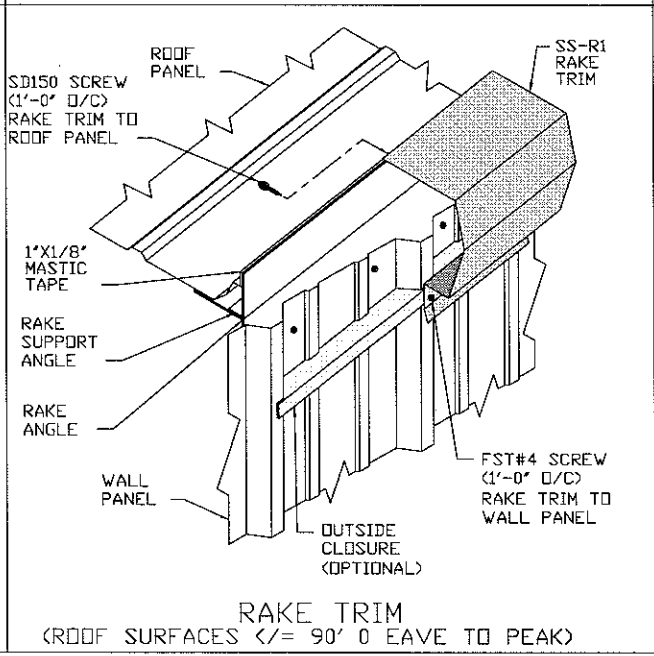
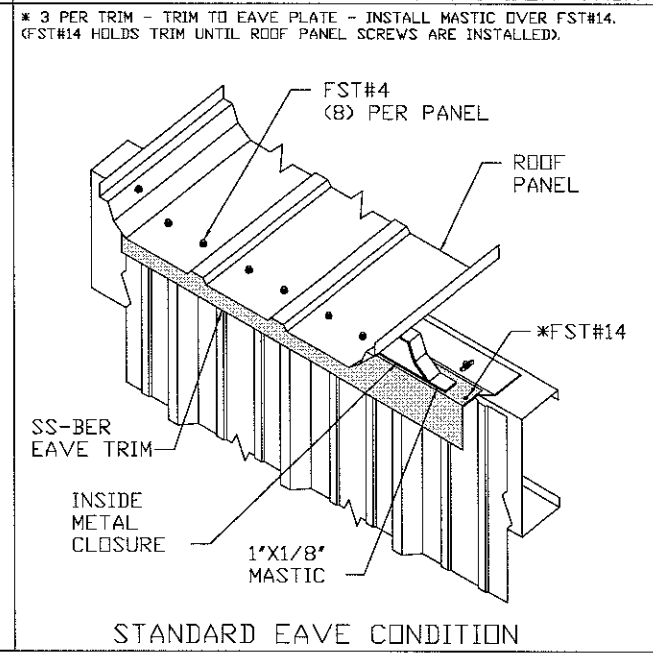
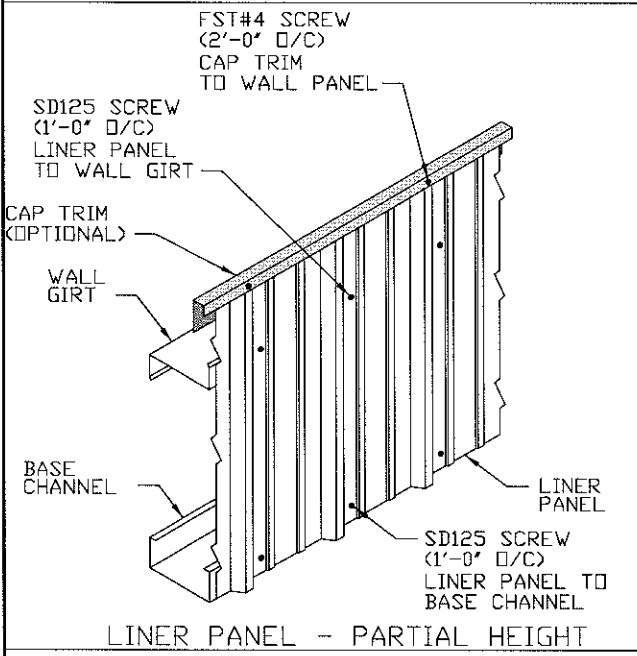
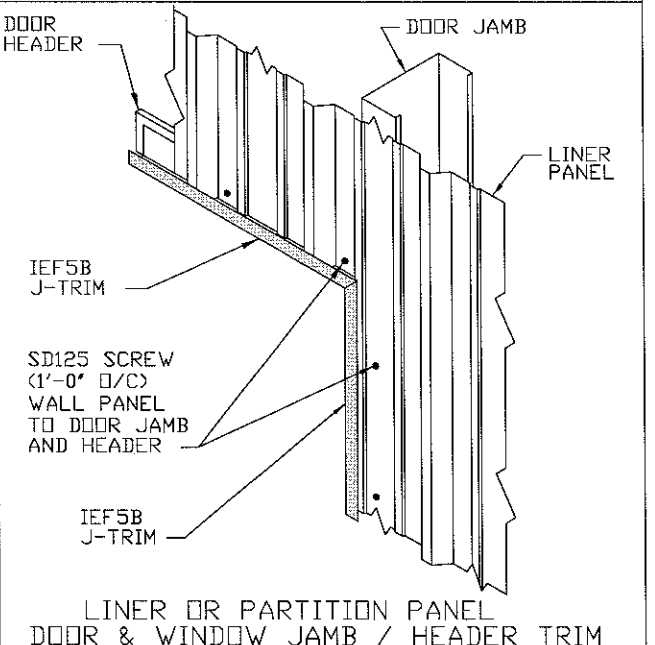
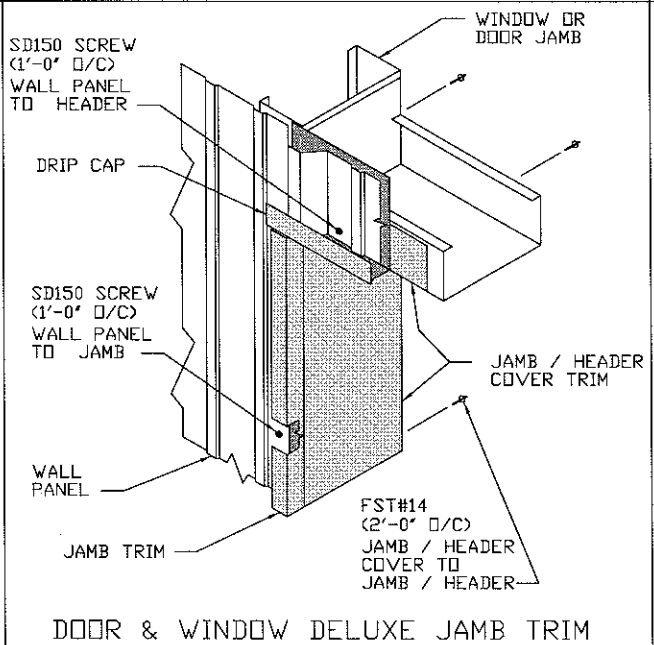
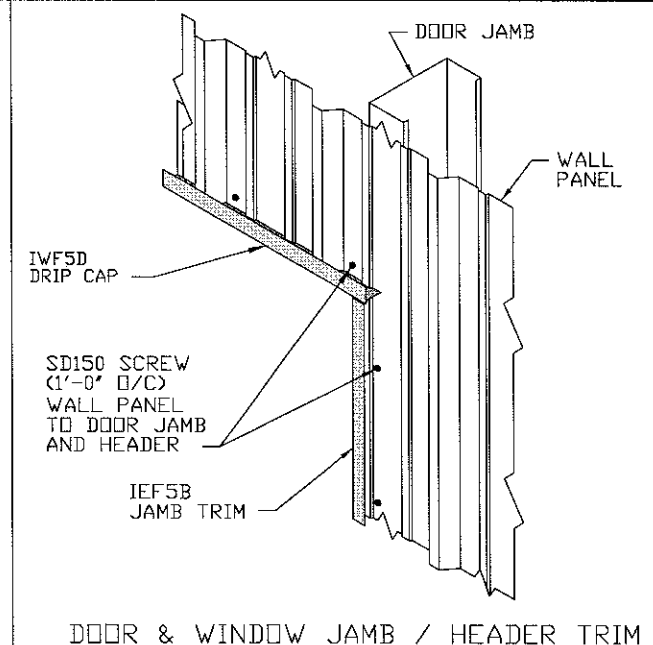
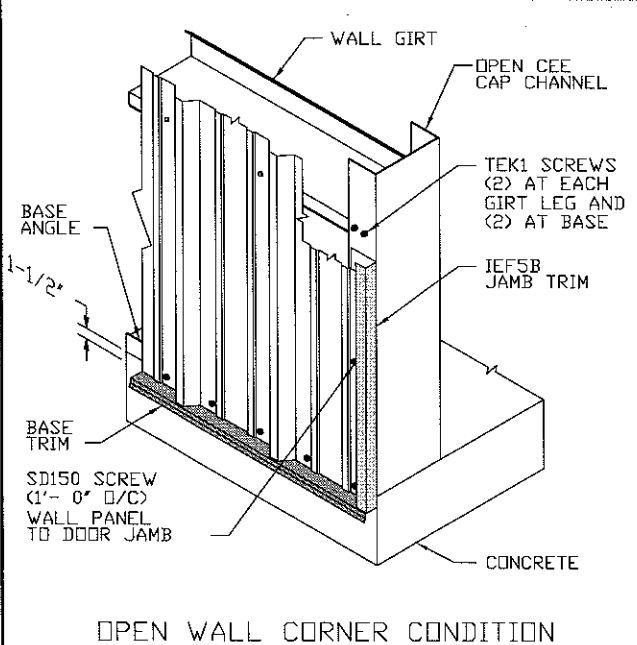
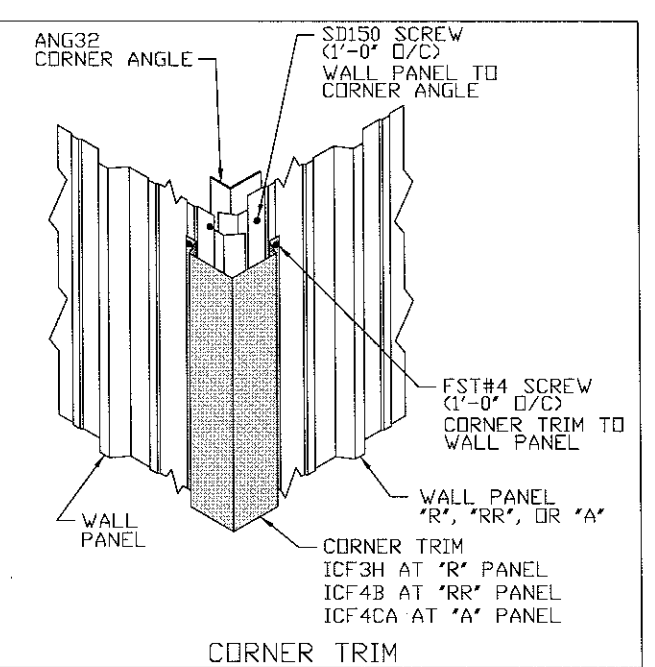
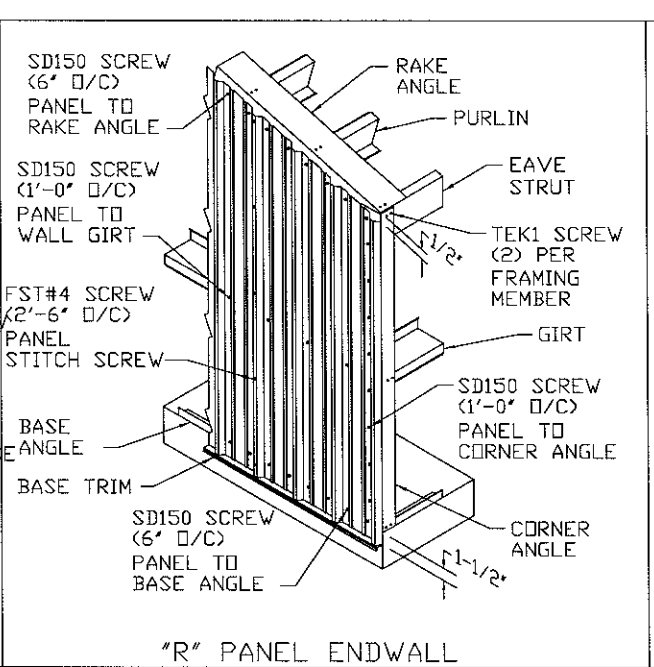
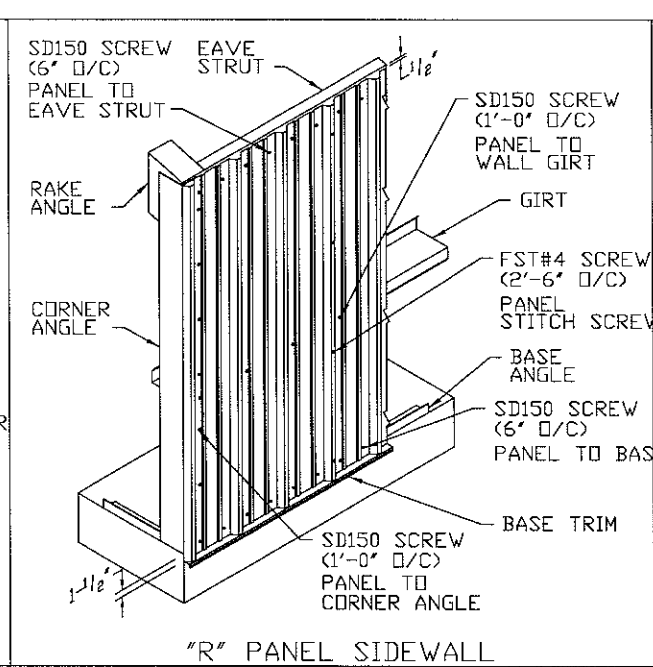
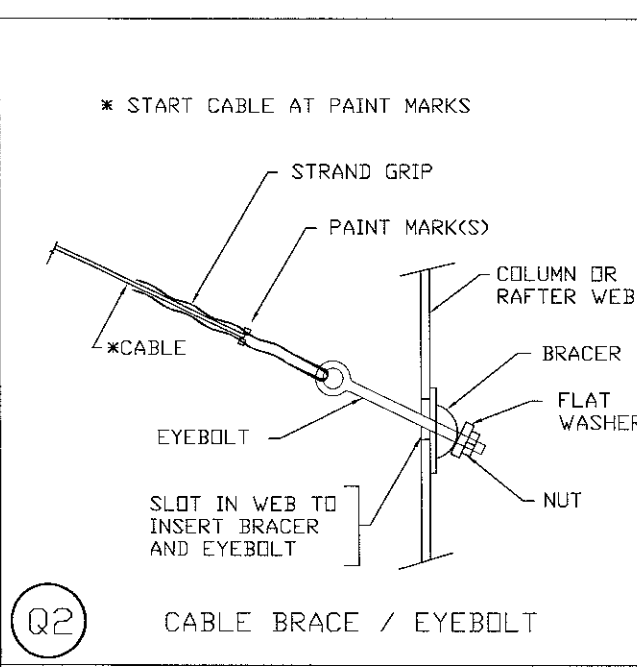
DRAWING STATUS

FOR APPROVAL: THESE DRAWINGS, BEING FOR APPROVAL, ARE BY DEFINITION NOT FINAL, AND ARE FOR CONCEPTUAL REPRESENTATION ONLY. THEIR PURPOSE IS TO CONFIRM PROPER INTERPRETATION OF THE PROJECT DOCUMENTS. ONLY DRAWINGS ISSUED "FOR CONSTRUCTION" CAN BE CONSIDERED AS COMPLETE.

FOR PERMIT: THESE DRAWINGS, BEING FOR PERMIT, ARE BY DEFINITION NOT FINAL. ONLY DRAWINGS ISSUED "FOR CONSTRUCTION" CAN BE CONSIDERED AS COMPLETE.

FOR CONSTRUCTION: FINAL DRAWINGS.





114 ROSEMONT LANE, MILLER, PA 16655 (814)276-9611

PORTLAND SPORTS REALTY, LLC

120'-0" x 150'-0" x 34'-0"

DATE: 5/31/12
ENG: JKB
DWN: KAH
APPD: JKB

REVISION: 0

F.O. 17096

PORTLAND SPORTS REALTY, LLC

REVISION HISTORY

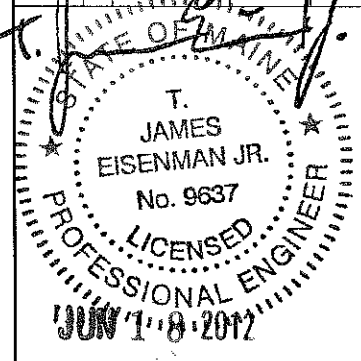
REV. DESCRIPTION

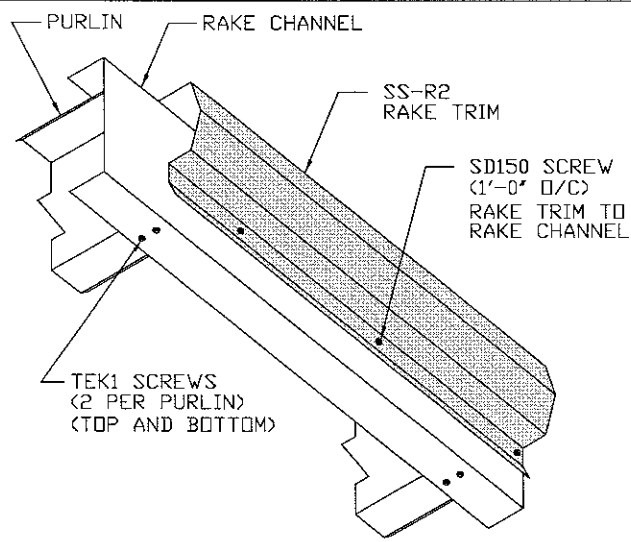
DRAWING STATUS

FOR APPROVAL: THESE DRAWINGS, BEING FOR APPROVAL, ARE BY DEFINITION NOT FINAL, AND ARE FOR CONCEPTUAL REPRESENTATION ONLY. THEIR PURPOSE IS TO CONFIRM PROPER INTERPRETATION OF THE PROJECT DOCUMENTS. ONLY DRAWINGS ISSUED "FOR CONSTRUCTION" CAN BE CONSIDERED AS COMPLETE.

FOR PERMIT: THESE DRAWINGS, BEING FOR PERMIT, ARE BY DEFINITION NOT FINAL. ONLY DRAWINGS ISSUED "FOR CONSTRUCTION" CAN BE CONSIDERED AS COMPLETE.

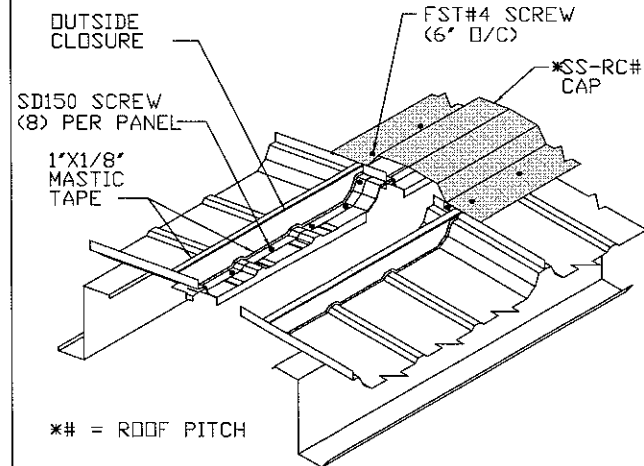
FOR CONSTRUCTION: THESE DRAWINGS, BEING FOR CONSTRUCTION, ARE BY DEFINITION NOT FINAL. ONLY DRAWINGS ISSUED "FOR CONSTRUCTION" CAN BE CONSIDERED AS COMPLETE.



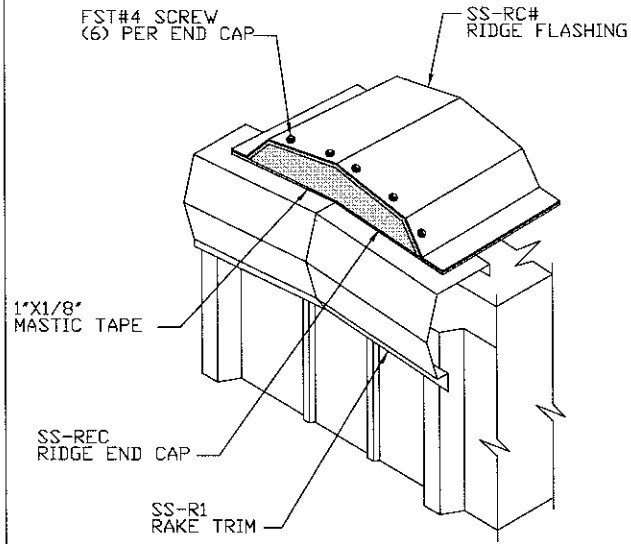


RAKE AT OPEN WALL OR
RAKE EXTENSION WITHOUT SOFFIT
(ROOF SURFACES $\leq 90^\circ$ EAVE TO PEAK)

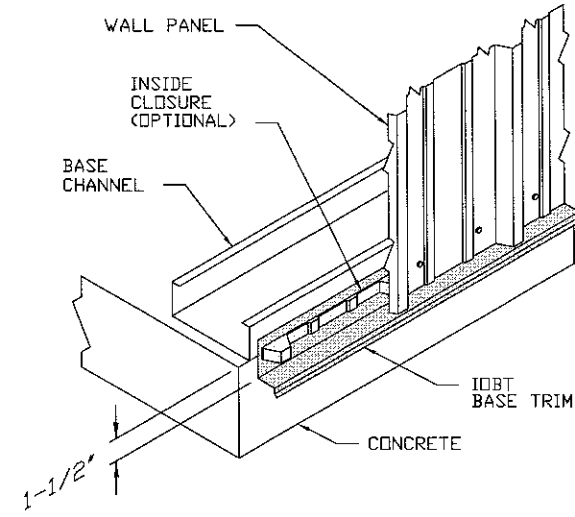
NOTES:
1) INSTALL THE RIDGE FLASHING STARTING AND ENDING 2-1/2' OUTSIDE THE STEEL LINE.
2) LEAVE 6" UNFASTENED ON EACH END TO ALLOW THE RAKE TRIM TO BE INSTALLED LATER.
3) DO NOT INSTALL THE FST#4 SCREWS FOR THE RIDGE CAP THROUGH THE LOCK OF THE STANDING SEAM.



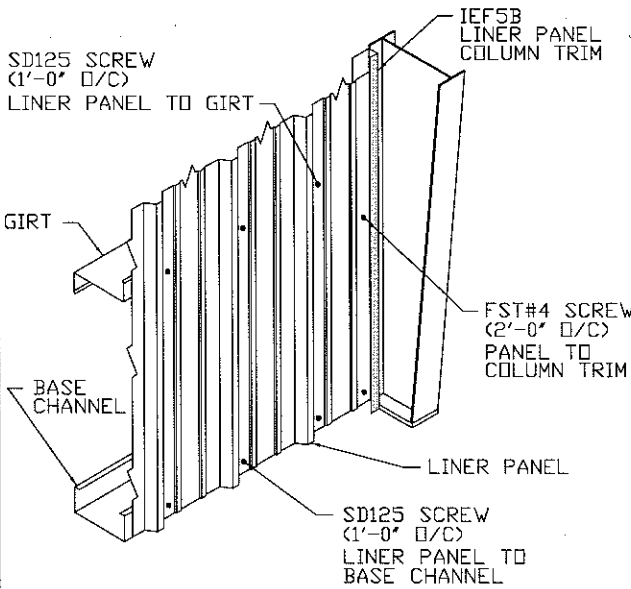
= ROOF PITCH
RIDGE CAP TRIM



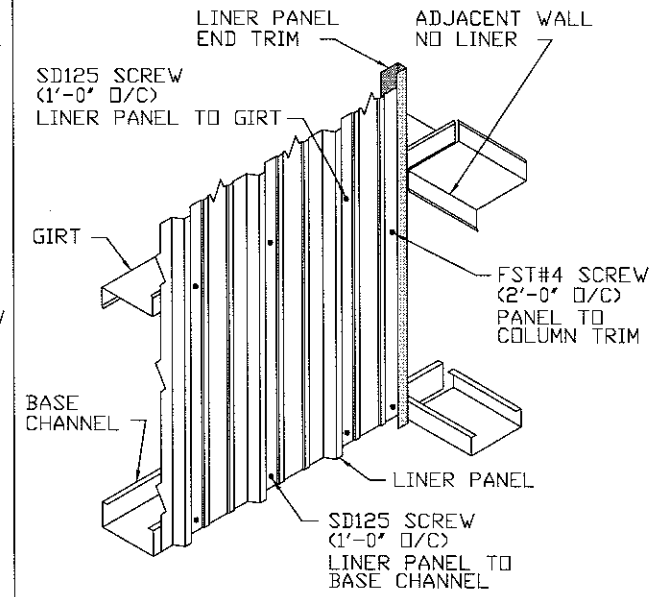
RIDGE CAP END CLOSURE



BASE TRIM AT BASE CHANNEL



LINER PANEL COLUMN TRIM



LINER PANEL END



114 ROSEMONT LANE, MILLER, PA 16655 (814)276-9611

PORTLAND SPORTS REALTY, LLC

120'-0" x 150'-0" x 34'-0"

DATE: 5/31/12

ENG: JKB DWN: KAH APPD: JKB

REVISION: 0

F.O. 17096

PORTLAND SPORTS REALTY, LLC

REV.	DESCRIPTION	DATE

DRAWING STATUS

FOR APPROVAL: THESE DRAWINGS, BEING FOR APPROVAL, ARE BY DEFINITION NOT FINAL, AND ARE FOR CONCEPTUAL REPRESENTATION ONLY. THEIR PURPOSE IS TO CONFIRM PROPER INTERPRETATION OF THE PROJECT DOCUMENTS. ONLY DRAWINGS ISSUED "FOR CONSTRUCTION" CAN BE CONSIDERED AS COMPLETE.

FOR PERMIT: THESE DRAWINGS, BEING FOR PERMIT, ARE BY DEFINITION NOT FINAL. ONLY DRAWINGS ISSUED "FOR CONSTRUCTION" CAN BE CONSIDERED AS COMPLETE.

FOR CONSTRUCTION: FINAL DRAWINGS.

