

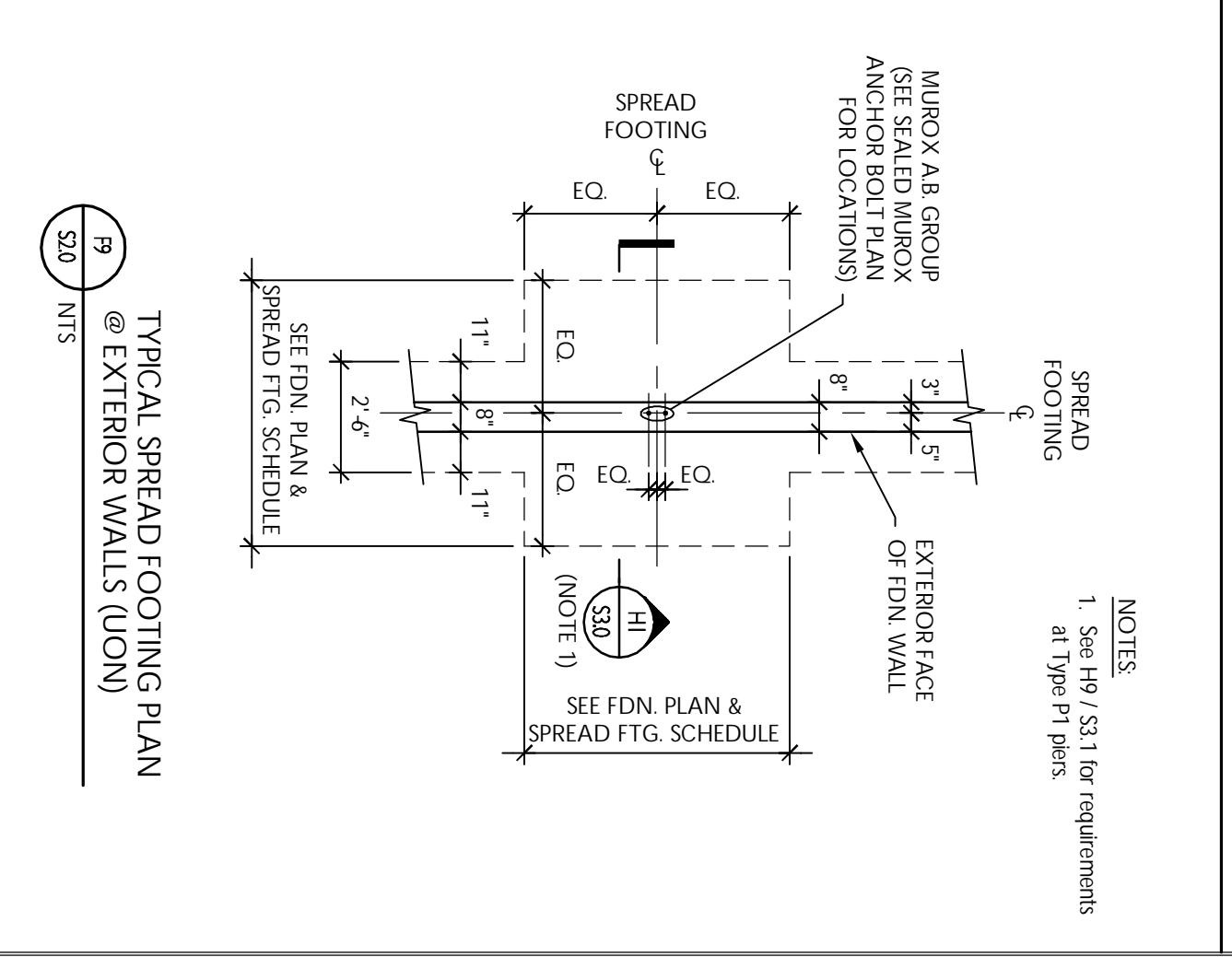
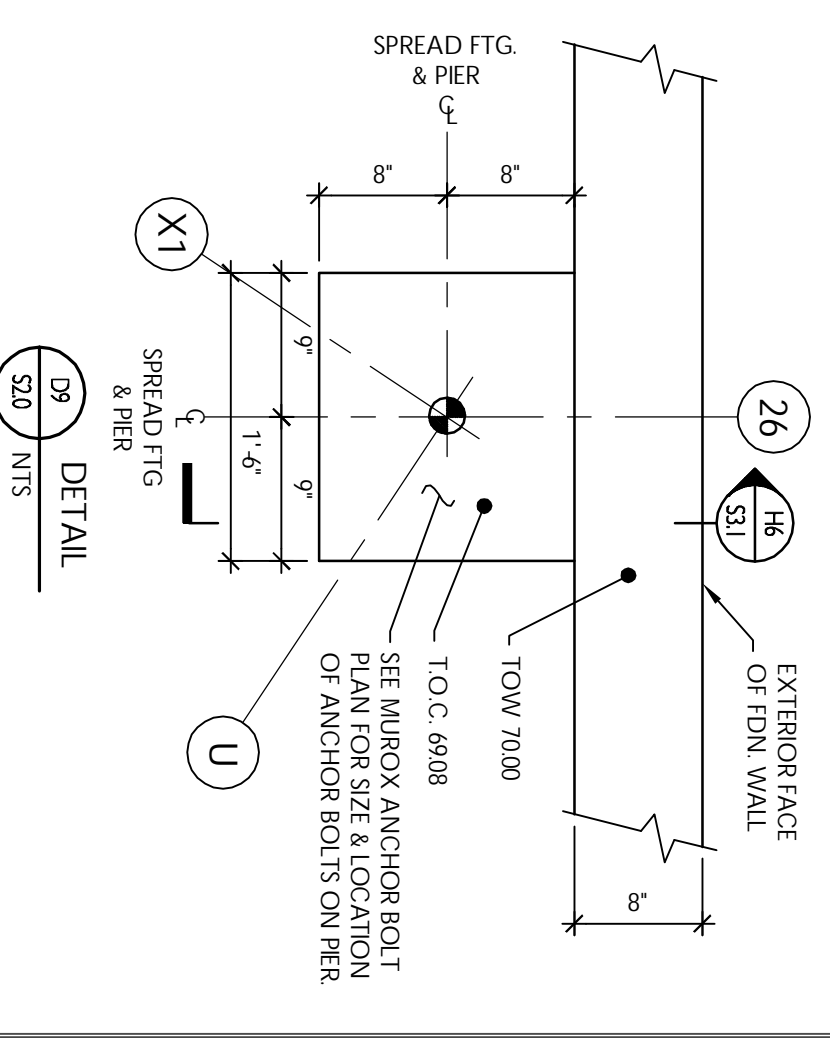
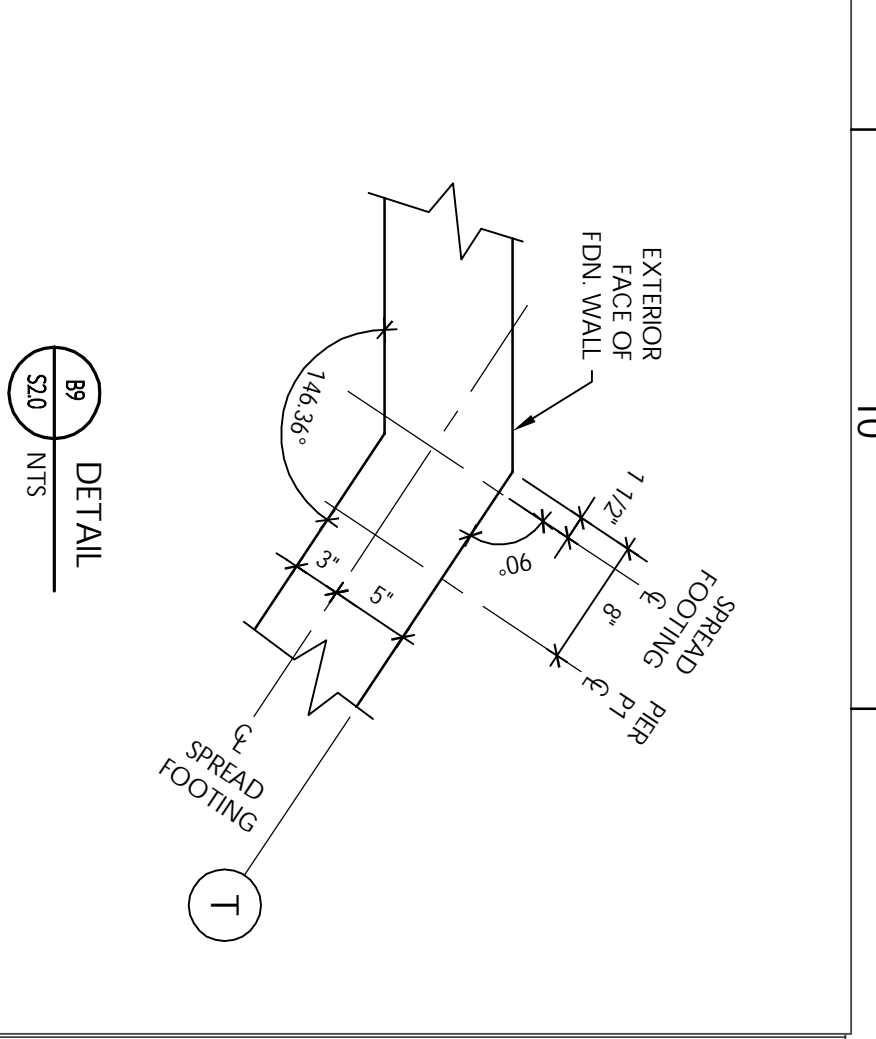
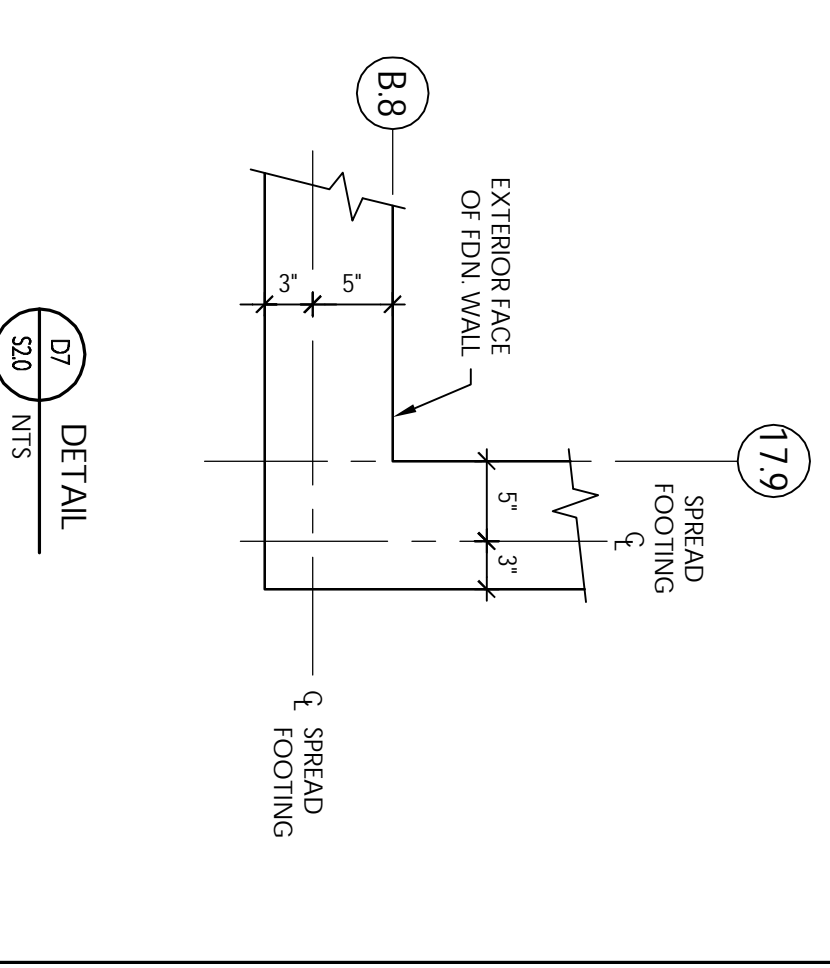
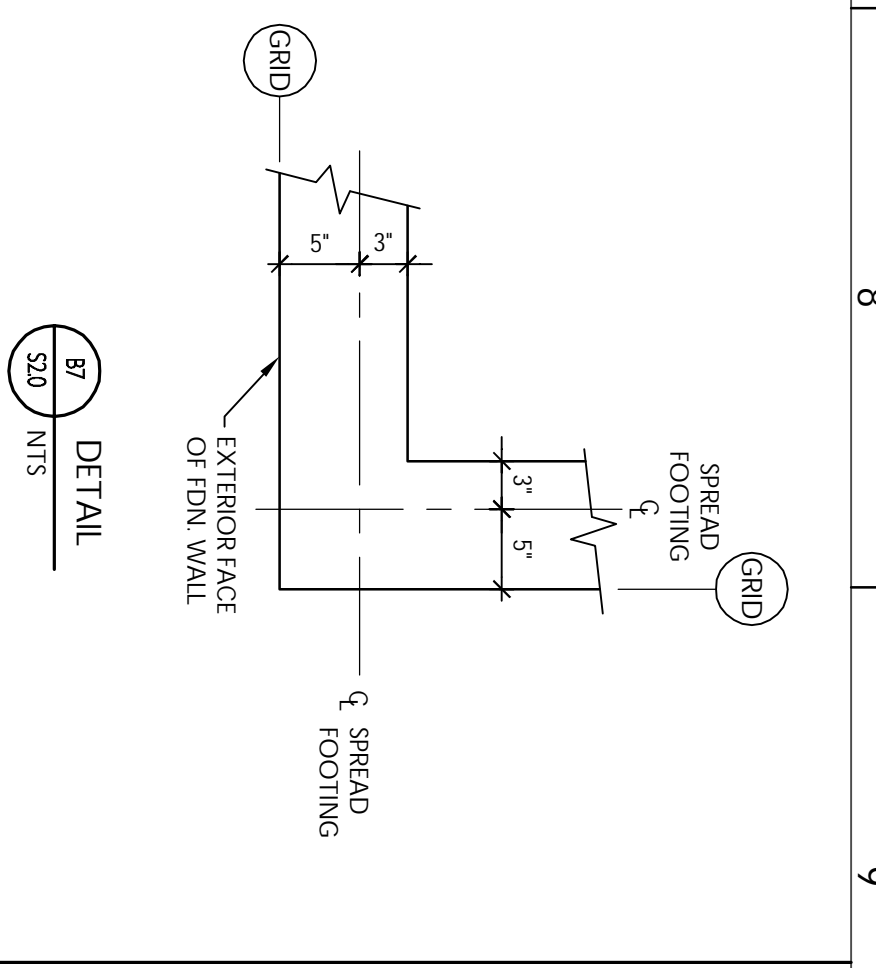
**ISSUED FOR PERMIT ONLY**

**PRELIMINARY**

**NOT FOR CONSTRUCTION**

UNDER NO CIRCUMSTANCES SHALL THIS DRAWING BE USED TO DEVELOP SHOP DRAWINGS OR FABRICATE NEW MATERIALS. SHOP DRAWINGS PREPARED USING THIS DRAWING WILL BE REJECTED WITHOUT REVIEW.

- NOTES**
- Anchor bolt size, location, length, and other requirements shall be included in strict accordance with the Murox Drawing labeled, "Anchor Bolt Plan and Details," that has been sealed by an engineer currently registered in the State of Maine.
  - Concrete shall not be placed until it has been inspected by the independent agency contracted by the owner.
  - See Drawing S10 for additional notes and requirements.
  - Provide temporary support and shoring as necessary to prevent undermining of existing structures.
  - Footings labeled on plan with "..." shall have #4 @ 12" reinforcing each way at top of footing.
  - Footing sizes are based on loads provided by Murox on Drawing 1 of 4, dated October 14, 2004, entitled, "Anchor Bolt Plan and Details," in this Murox drawing. Structural Engineers, Inc. to verify that the footing sizes are compatible with the imposed loads.
  - Top of concrete foundation wall at door openings at locations where no concrete slab exists shall be EL 7000 unless otherwise noted on Architectural Drawings.
  - See S10, S30, and S31 for required typical details.
  - Locate Pier P1 centerline at 1'-0" from corner where shown (UON).



<p><b>CWS Architects</b> Space Planning Value Design</p> <p>134 Cumberland Avenue Portland, ME 04101 Phone: (207) 774-4441 Fax: (207) 774-4018 <a href="http://www.CWSarch.com">www.CWSarch.com</a></p>	<p><b>PROFESSOR OF ARCHITECTURE</b> <b>Structural Engineers, Inc.</b> 25 Forest Edge Road Portland, ME 04103</p>	<p><b>Contractor:</b> <b>DESTEFANO AND ASSOCIATES, INC.</b> 2461 Lafayette Road Portland, ME 03801 (603) 430-0339</p>	<p><b>Project:</b> <b>FROZEN ROPES SPORTS CENTER</b> Wilton Avenue Portland, Maine</p>	<p><b>ISSUED FOR PERMIT</b> OCTOBER 22, 2004</p>	<p><b>Drawing Title:</b> <b>FOUNDATION PLAN AND DETAILS</b></p> <p>Scale: As Noted Date: 10/15/04 PSE Project No.: 038-04 Revisions:</p>	<p><b>Drawing Number:</b> <b>S2.0</b></p>
---	--	---	--	--	--	---