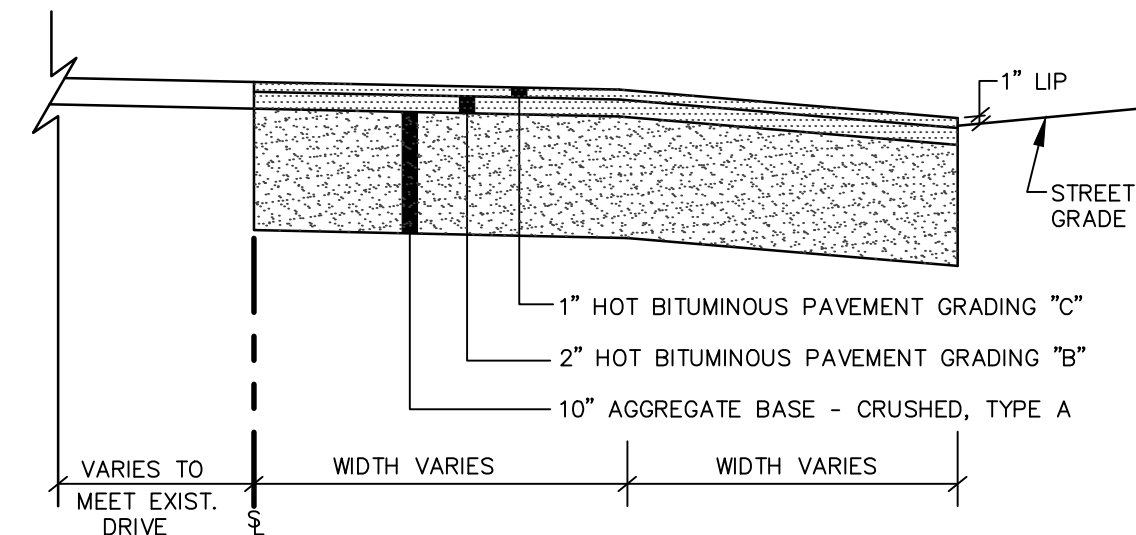
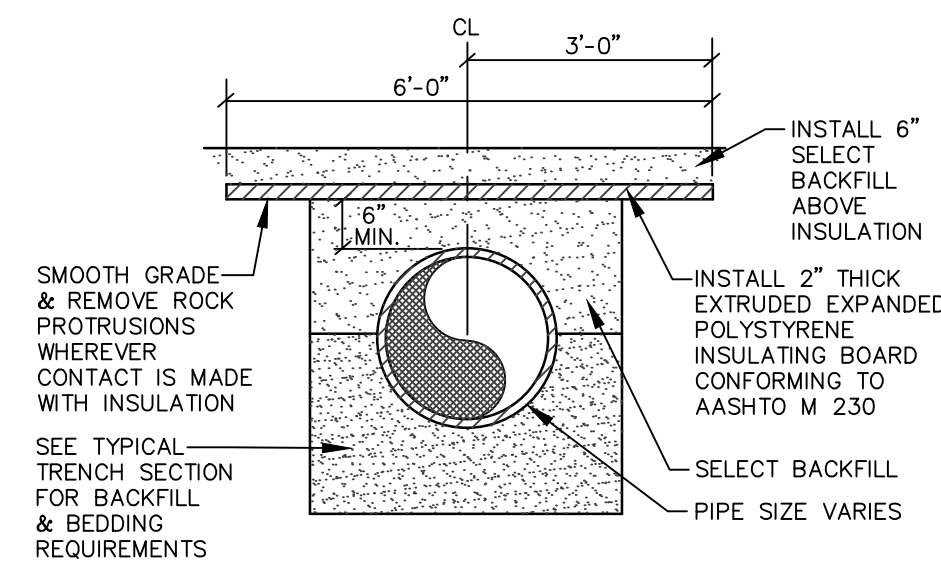


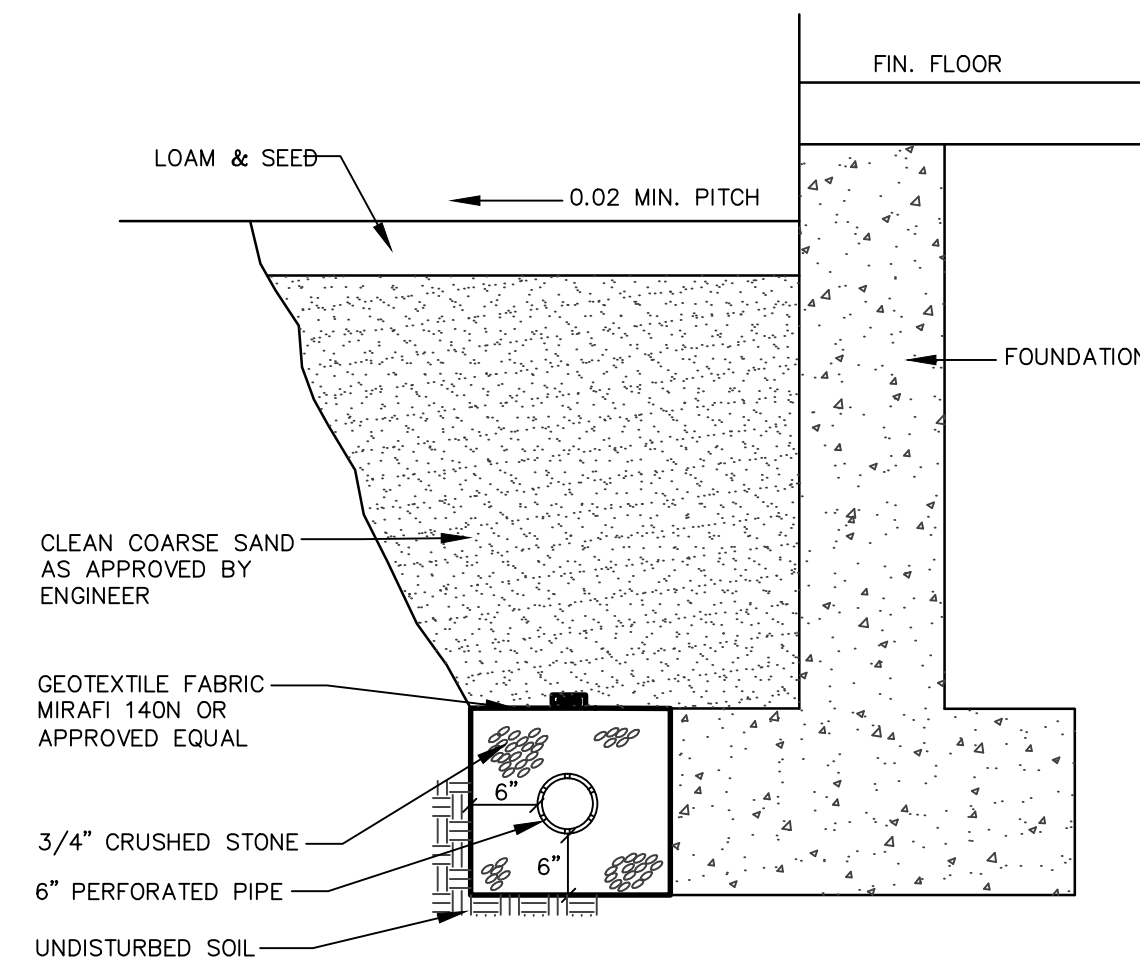
**TYPICAL PAVEMENT JOINT**  
NOT TO SCALE



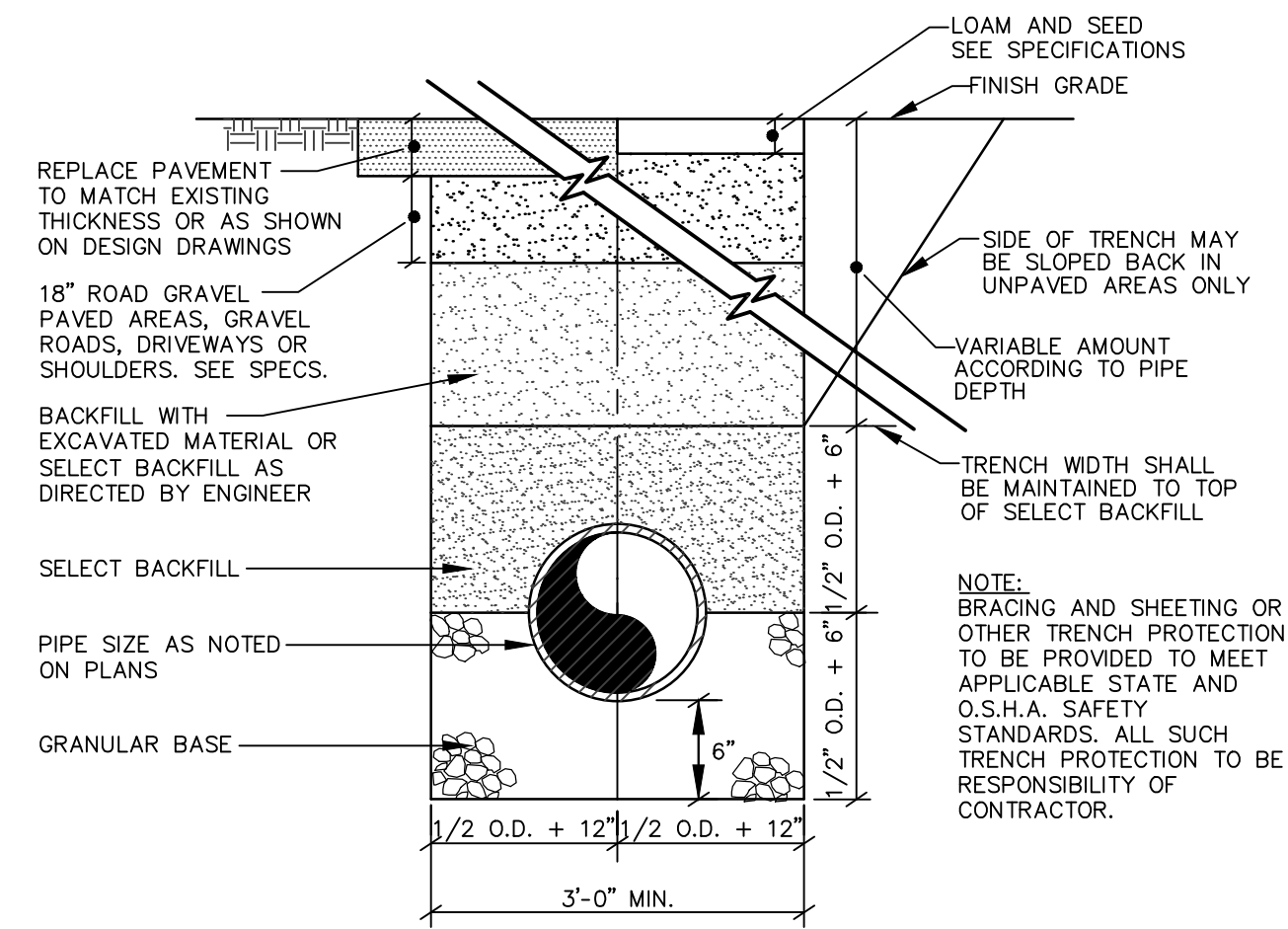
**BITUMINOUS DRIVEWAY CONSTRUCTION**  
NOT TO SCALE



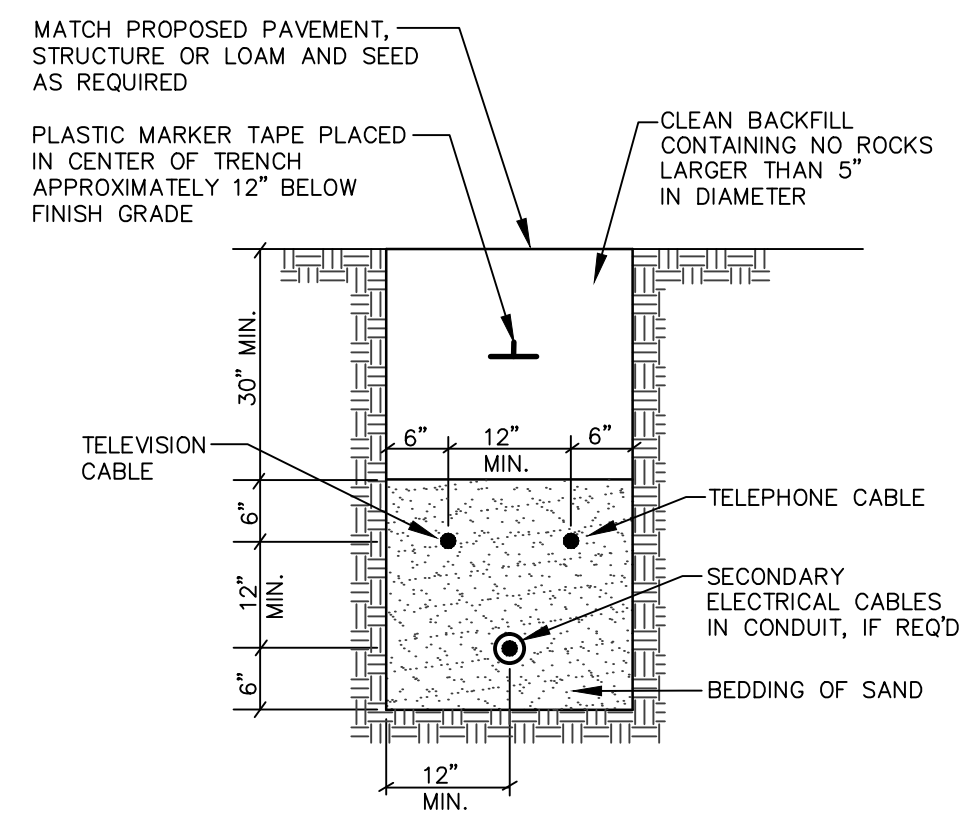
**PIPE INSULATION DETAIL**  
NOT TO SCALE



**TYP. FOUNDATION DRAIN SECTION**  
NOT TO SCALE

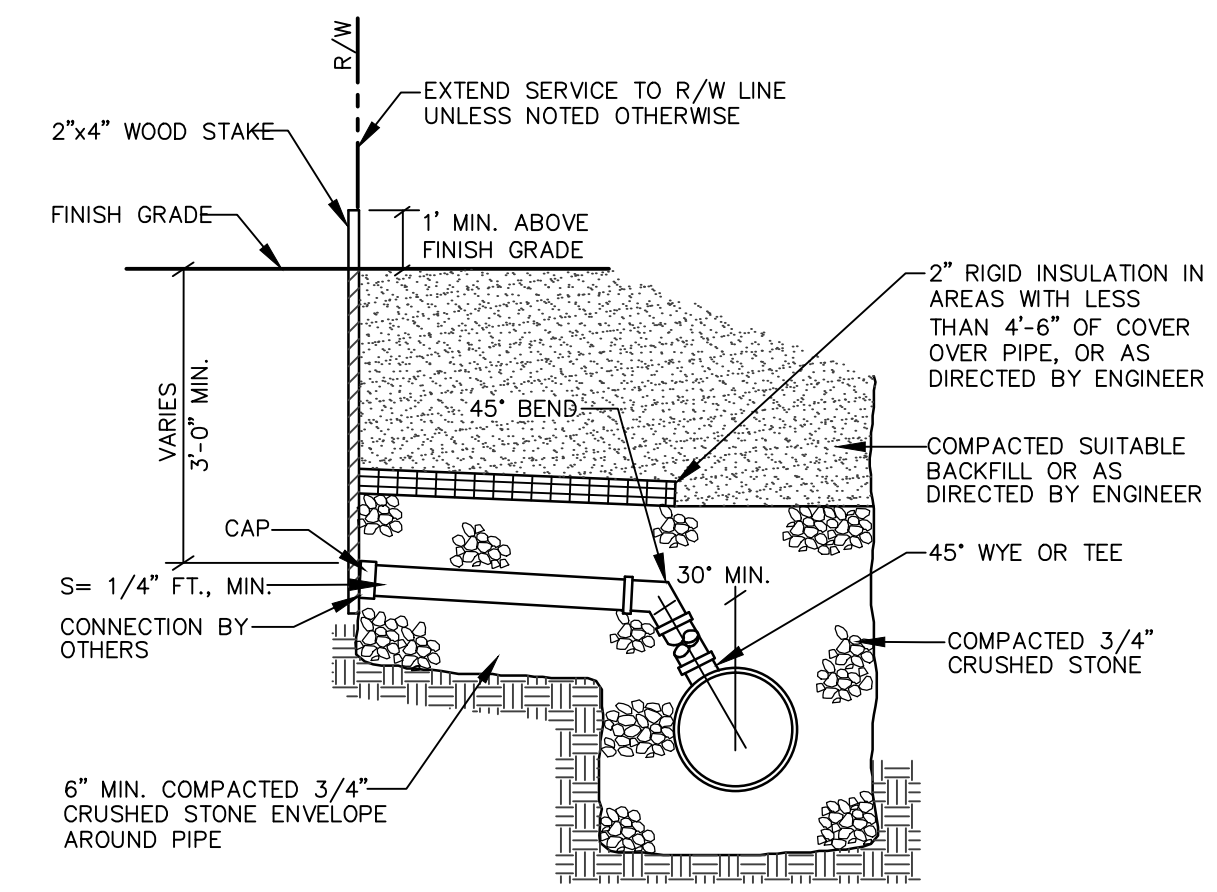


**TRENCH SECTION**  
NOT TO SCALE



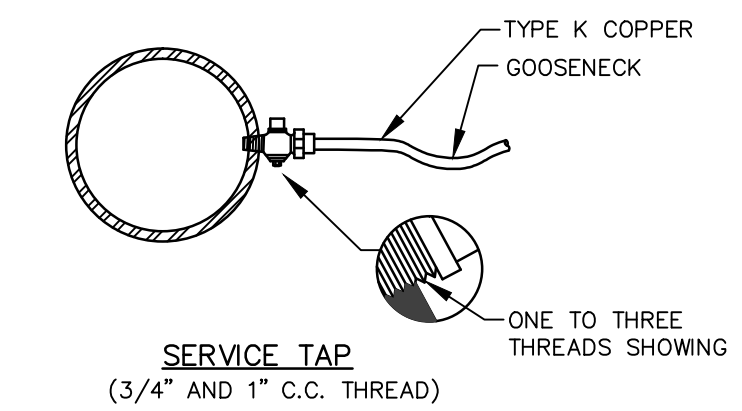
CABLES TO BE ENCASED IN SCHEDULE 40 PVC CONDUIT WHEN RUN BENEATH PAVED AREAS.

**TYPICAL UNDERGROUND CABLE INSTALLATION**  
NOT TO SCALE

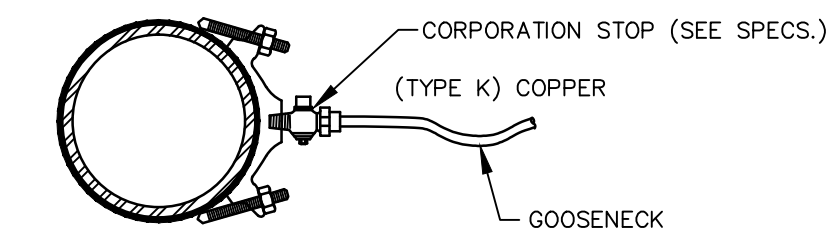


- NOTES:**
- PIPE DIAMETERS MAY VARY, SEE TYPICAL PIPE TRENCH DETAIL THIS SHEET.
  - WHERE 30° MINIMUM ANGLE BETWEEN SEWER CONNECTION AT THE SEWER MAIN AND THE VERTICAL CANNOT BE MAINTAINED, PROVIDE A PRECAST SEWER CHIMNEY.
  - IF STAKE IS CUT OFF FLUSH OR SLIGHTLY BELOW GRADE, PROVIDE MIN. OF TWO 16d. GALV. SPIKES DRIVEN INTO TOP OF 2" x 4" TO PROVIDE METAL DETECTABILITY.

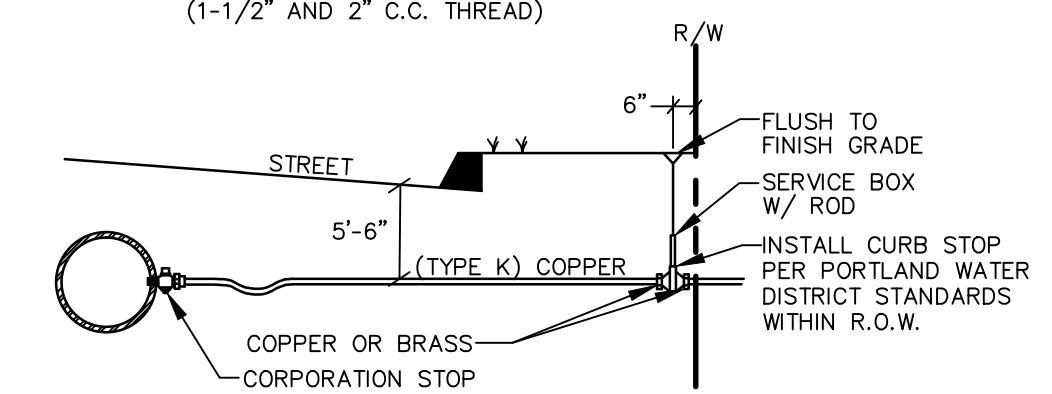
**HORIZONTAL SANITARY & STORM DRAIN CONNECTION**  
NOT TO SCALE



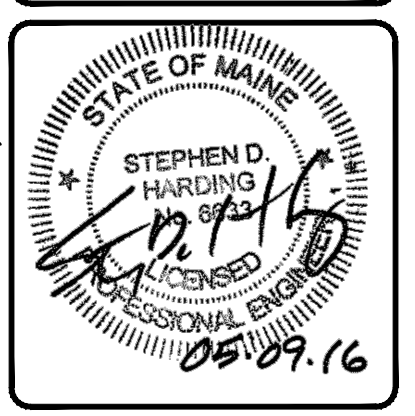
**SERVICE TAP**  
(3/4" AND 1" C.C. THREAD)



**SERVICE SADDLE**  
(1-1/2" AND 2" C.C. THREAD)



**TYPICAL SERVICE CONNECTION**  
NOT TO SCALE



DESIGNED	CHECKED
BJB	SDH
<p>B SDH 5/09/16 ISSUED FOR PERMIT BY RULE  A MWE 4/21/16 RELEASED FOR CLIENT REVIEW  REV BY: DATE: STATUS:  REVISIONS: WITHOUT WRITTEN PERMISSION FROM SEBAGO TECHNICS, INC. - ANY ALTERATIONS, AUTHORIZED OR OTHERWISE, SHALL BE AT THE USER'S SOLE RISK AND WITHOUT LIABILITY TO SEBAGO TECHNICS, INC.</p>	

**SEBAGO TECHNICS**  
WWW.SEBAGOTECHNICS.COM  
250 Goddard Rd.  
Suite B  
Lewis, ME 04560  
75 John Roberts Rd.  
South Portland, ME 04106  
Tel: 207-200-2100 Fax: 207-783-5656

**DETAILS**  
OF: **PROPOSED LOT DIVISION**  
HOLM AVE  
PORTLAND, MAINE  
FOR: **PETE MARTELLE**  
12 SPRING STREET  
CUMBERLAND, MAINE 04021