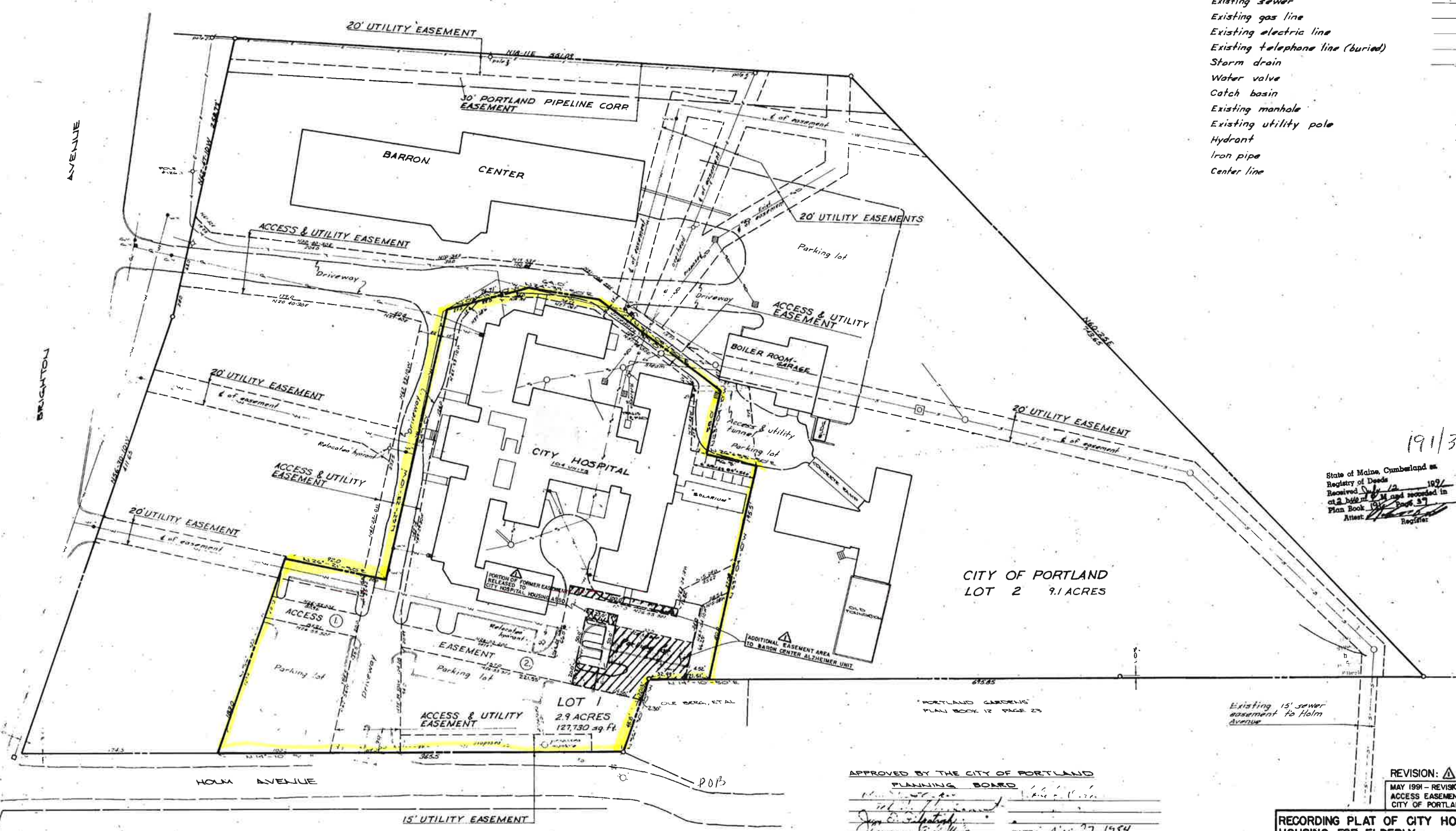




LEGEND

Existing water line	—w—
Existing sewer	—s—
Existing gas line	—g—
Existing electric line	—e—
Existing telephone line (buried)	—t—
Storm drain	—SD—
Water valve	•
Catch basin	⊞
Existing manhole	○
Existing utility pole	⊕
Hydrant	⊕
Iron pipe	○
Center line	—c—



191 37

191/39

State of Maine, Cumberland Co.
 Registry of Deeds
 Received July 12 1985
 at Portland and recorded in
 Plan Book 148 Page 67
 Attest: _____
 Registrar

CITY OF PORTLAND
 LOT 2 9.1 ACRES

LOT 1
 2.9 ACRES
 127,730 sq. Ft.

NOTES:
 1/ LOCATION OF UNDERGROUND UTILITIES IS APPROXIMATE.
 2/ UTILITIES SHOWN ON THIS PLAN ARE EXISTING UNLESS LABELED OTHERWISE.
 3/ ONLY UTILITIES THAT AFFECT THE USE AND OCCUPATION OF BOTH LOTS 1 AND 2 ARE SHOWN.

NOTE: THE FOLLOWING REVISIONS WERE MADE TO THIS PLAN 6-17-85
 1. ADDED PROPOSED "SOLARIUM"
 2. ADDED NOTATION OF 104 UNITS
 3. ADDED 6 PROPOSED PARKING SPACES BEHIND "SOLARIUM"

APPROVED BY THE CITY OF PORTLAND
 PLANNING BOARD

 CODES ENFORCEMENT OFFICER

APPROVED BY THE PLANNING AUTHORITY PURSUANT
 TO § 14-496(3) PORTLAND CITY CODE

 JOSEPH E. GRAY, DIR. OF PLANNING
 AND URBAN DEVELOPMENT



REVISION: Δ
 MAY 1991 - REVISION TO
 ACCESS EASEMENTS BY
 CITY OF PORTLAND

RECORDING PLAT OF CITY HOSPITAL HOUSING FOR ELDERLY PORTLAND, MAINE FOR CITY HOSPITAL HOUSING ASSOC.

Owen Haskell, Inc.
 Civil Engineers South Portland, Maine Lead Surveyors

Drawn By: M.M.H.O.W.	Date: NOV. 8, 1984	Job No. B716 P
Trace By: M.M.H., O.W.	Scale: 1" = 40'	Draw. No. 1
Check By: O.W.		
Bl. No. 255, 256, 257		