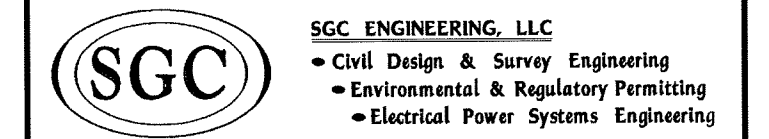


The Architectural Team, Inc.
50 Commandant's Way at Admiral's Hill
Chelsea MA 02150
T 617.889.4402
F 617.884.4329
www.architecturalteam.com
©2011 The Architectural Team, Inc.

Consultant:

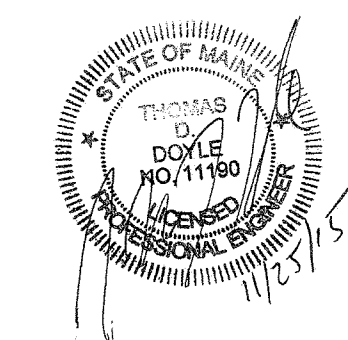


SERVING OUR CLIENTS IN THE U.S.A. & CANADA
801 County Road, Portland, Maine 04102
40 Harbor Street, Suite 7, Portland, ME 04102
14 School Street, Suite 203-B, Portland, ME 04102
6000 Highway 101, Suite 100, Portland, ME 04103

Revision:

- 08/24/15
- 10/19/15
- 11/25/15

Engineer of Record:



PROGRESS DOCUMENTS
NOT FOR CONSTRUCTION

Drawn: TDD
Checked: TMH
Scale: AS NOTED
Key Plan:

Project Name:
LORING HOUSE

1125 Brighton Avenue
Portland, ME 04102

Sheet Name:

Site Layout &
Utilities Plan

Project Number:

14165

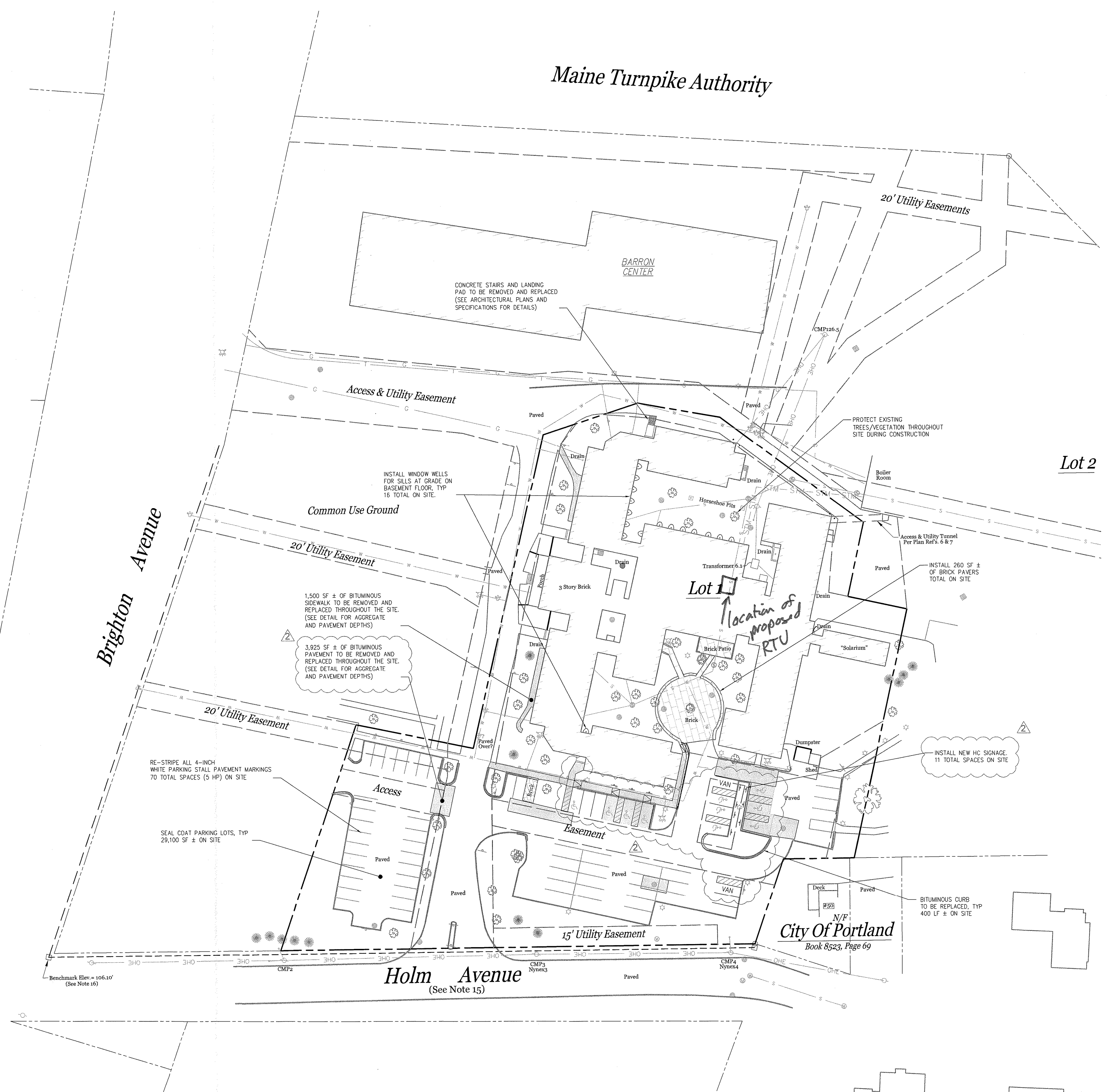
Issue Date:

OCTOBER 19, 2015

Sheet Number:

C2.0

- Legend:**
- EXISTING**
- Found Monument
 - Found Iron Pipe
 - Catch Basin
 - Sanitary Manhole
 - Manhole
 - Fire Hydrant
 - Lamp Post
 - Utility Pole w/Guy Wire
 - Sign
 - Water Shutoff
 - Water Valve
 - 6" Bolted
 - Coniferous Tree
 - Deciduous Tree
 - Chainlink Fence
 - Approximate Boundary Line
 - Approximate Abutter's Line
 - Approximate Easement
 - Bituminous Pavement/Curb
 - Major Contour
 - Minor Contour
 - Storm Drain
 - Sanitary Sewer
 - Overhead Wire
 - Building
- PROPOSED**
- Asphalt Pavement/Sidewalk
 - Concrete Stairs/Walkway
 - Brick Pavers
 - Bituminous Curb
 - Catch Basin
 - Window Well w/Drain Cover



- SCOPE OF WORK NOTES:**
1. PROTECT EXISTING TREES/VEGETATION THROUGHOUT SITE DURING CONSTRUCTION
 2. RIMS & INVERTS FOR STORM DRAINAGE TO BE FIELD VERIFIED

