

Consultant:

Richard Melling, PE  
MEP DESIGN CONSULTANT  
8824 Gatherstone Ct.  
Raleigh, NC 27615  
email: rmelling@mellingengineering.com

Revision:

△	11/25/15
△	12/10/15
△	1/6/16

Engineer of Record:



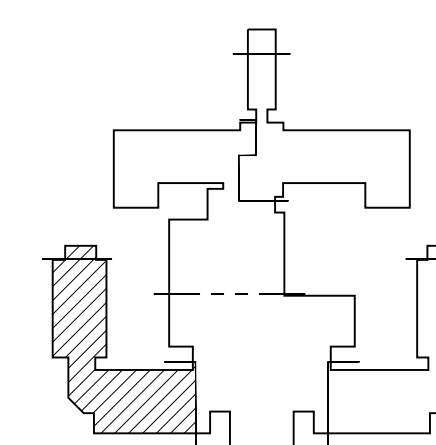
11/25/15

Drawn: RM

Checked: RM

Scale: 1/4" = 1'-0"

Key Plan:



Project Name:

**LORING HOUSE**

1125 Brighton Avenue  
Portland, ME 04102

Sheet Name:

**Part Plan A  
Fourth Floor**

Project Number:

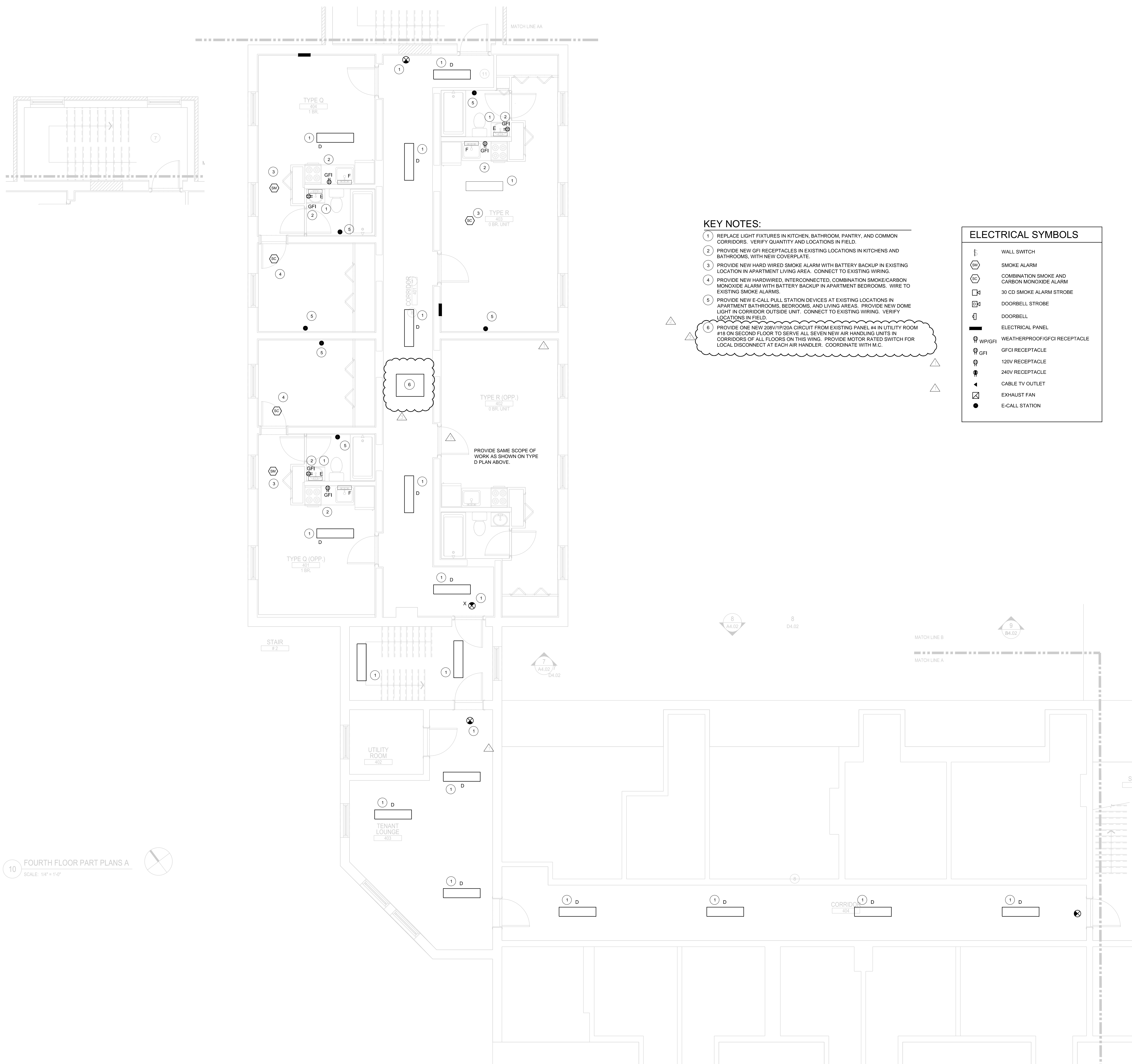
14165

Issue Date:

October 19, 2015

Sheet Number:

**E2.04a**



**KEY NOTES:**

- 1 REPLACE LIGHT FIXTURES IN KITCHEN, BATHROOM, PANTRY, AND COMMON CORRIDORS. VERIFY QUANTITY AND LOCATIONS IN FIELD.
- 2 PROVIDE NEW GFI RECEPTACLES IN EXISTING LOCATIONS IN KITCHENS AND BATHROOMS, WITH NEW COVERPLATE.
- 3 PROVIDE NEW HARD WIRED SMOKE ALARM WITH BATTERY BACKUP IN EXISTING LOCATION IN APARTMENT LIVING AREA. CONNECT TO EXISTING WIRING.
- 4 PROVIDE NEW HARDWIRED, INTERCONNECTED, COMBINATION SMOKE/CARBON MONOXIDE ALARM WITH BATTERY BACKUP IN APARTMENT BEDROOMS. WIRE TO EXISTING SMOKE ALARMS.
- 5 PROVIDE NEW E-CALL PULL STATION DEVICES AT EXISTING LOCATIONS IN APARTMENT BATHROOMS, BEDROOMS, AND LIVING AREAS. PROVIDE NEW DOME LIGHT IN CORRIDOR OUTSIDE UNIT. CONNECT TO EXISTING WIRING. VERIFY LOCATIONS IN FIELD.
- 6 PROVIDE ONE NEW 208V/1P/20A CIRCUIT FROM EXISTING PANEL #4 IN UTILITY ROOM #18 ON SECOND FLOOR TO SERVE ALL SEVEN NEW AIR HANDLING UNITS IN CORRIDORS OF ALL FLOORS ON THIS WING. PROVIDE MOTOR RATED SWITCH FOR LOCAL DISCONNECT AT EACH AIR HANDLER. COORDINATE WITH M.C.

**ELECTRICAL SYMBOLS**

⏏	WALL SWITCH
SM	SMOKE ALARM
CC	COMBINATION SMOKE AND CARBON MONOXIDE ALARM
30 CD	30 CD SMOKE ALARM STROBE
DB	DOORBELL STROBE
DB	DOORBELL
—	ELECTRICAL PANEL
WP/GFI	WEATHERPROOF/GFCI RECEPTACLE
GFI	GFCI RECEPTACLE
120V	120V RECEPTACLE
240V	240V RECEPTACLE
CTV	CABLE TV OUTLET
EF	EXHAUST FAN
●	E-CALL STATION

10 FOURTH FLOOR PART PLANS A  
SCALE: 1/4" = 1'-0"