

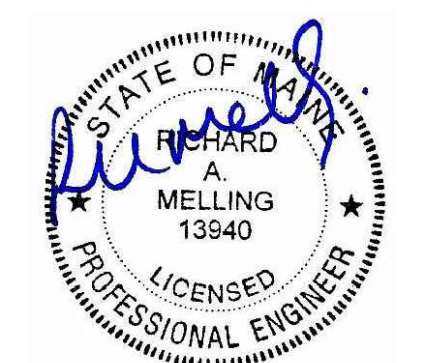
Consultant:

Richard Melling, PE
MEP DESIGN CONSULTANT
8824 Gatherstone Ct.
Raleigh, NC 27615
email: rmelling@mellingengineering.com

Revision:

△	11/25/15
△	12/10/15
△	1/6/16

Engineer of Record:



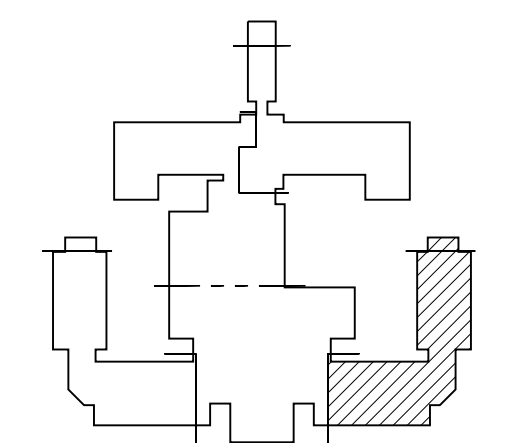
11/25/15

Drawn: RM

Checked: RM

Scale: 1/4" = 1'-0"

Key Plan:



Project Name:

LORING HOUSE

1125 Brighton Avenue
Portland, ME 04102

Sheet Name:

**Part Plan C
First Floor**

Project Number:

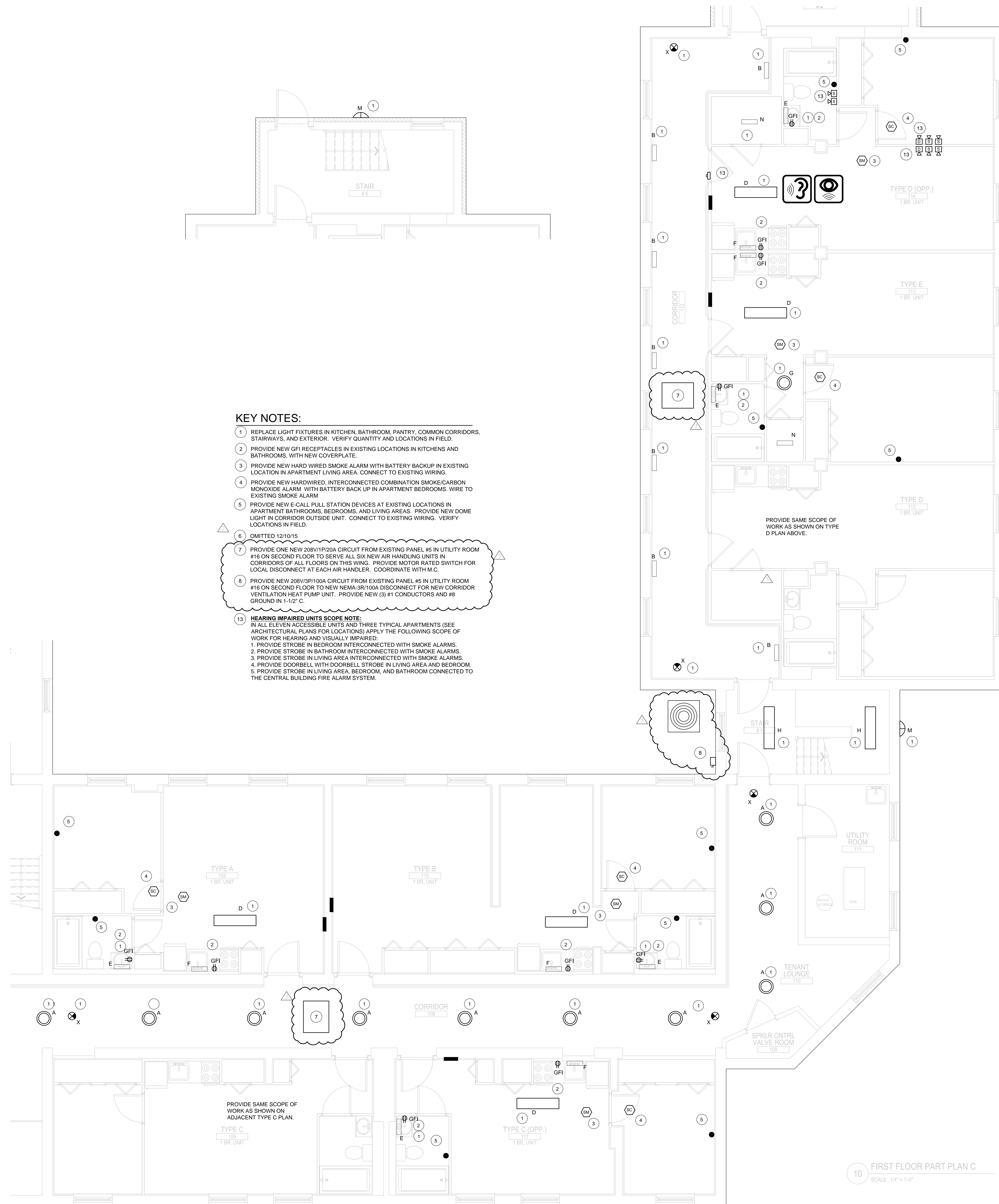
14165

Issue Date:

October 19, 2015

Sheet Number:

E2.01c



KEY NOTES:

- 1 REPLACE LIGHT FIXTURES IN KITCHEN, BATHROOM, PANTRY, COMMON CORRIDORS, STAIRWAYS, AND EXTERIOR. VERIFY QUANTITY AND LOCATIONS IN FIELD.
- 2 PROVIDE NEW GFI RECEPTACLES IN EXISTING LOCATIONS IN KITCHENS AND BATHROOMS, WITH NEW COVERPLATE.
- 3 PROVIDE NEW HARD WIRED SMOKE ALARM WITH BATTERY BACKUP IN EXISTING LOCATION IN APARTMENT LIVING AREA. CONNECT TO EXISTING WIRING.
- 4 PROVIDE NEW HARDWIRED, INTERCONNECTED COMBINATION SMOKE/CARBON MONOXIDE ALARM WITH BATTERY BACK UP IN APARTMENT BEDROOMS. WIRE TO EXISTING SMOKE ALARM
- 5 PROVIDE NEW E-CALL PULL STATION DEVICES AT EXISTING LOCATIONS IN APARTMENT BATHROOMS, BEDROOMS, AND LIVING AREAS. PROVIDE NEW DOME LIGHT IN CORRIDOR OUTSIDE UNIT. CONNECT TO EXISTING WIRING. VERIFY LOCATIONS IN FIELD.
- 6 OMITTED 12/10/15
- 7 PROVIDE ONE NEW 208V/1P/20A CIRCUIT FROM EXISTING PANEL #5 IN UTILITY ROOM #10 ON SECOND FLOOR TO SERVE ALL SIX NEW AIR HANDLING UNITS IN CORRIDORS OF ALL FLOORS ON THIS WING. PROVIDE MOTOR RATED SWITCH FOR LOCAL DISCONNECT AT EACH AIR HANDLER. COORDINATE WITH M.C.
- 8 PROVIDE NEW 208V/3P/100A CIRCUIT FROM EXISTING PANEL #5 IN UTILITY ROOM #10 ON SECOND FLOOR TO NEW NEMA-3R/100A DISCONNECT FOR NEW CORRIDOR VENTILATION HEAT PUMP UNIT. PROVIDE NEW (3) #1 CONDUCTORS AND #6 GROUND IN 1-1/2" C.
- 13 **HEARING IMPAIRED UNITS SCOPE NOTE:**
IN ALL ELEVEN ACCESSIBLE UNITS AND THREE TYPICAL APARTMENTS (SEE ARCHITECTURAL PLANS FOR LOCATIONS) APPLY THE FOLLOWING SCOPE OF WORK FOR HEARING AND VISUALLY IMPAIRED:
1. PROVIDE STROBE IN BEDROOM INTERCONNECTED WITH SMOKE ALARMS.
2. PROVIDE STROBE IN BATHROOM INTERCONNECTED WITH SMOKE ALARMS.
3. PROVIDE STROBE IN LIVING AREA INTERCONNECTED WITH SMOKE ALARMS.
4. PROVIDE DOORBELL WITH DOORBELL STROBE IN LIVING AREA AND BEDROOM.
5. PROVIDE STROBE IN LIVING AREA, BEDROOM, AND BATHROOM CONNECTED TO THE CENTRAL BUILDING FIRE ALARM SYSTEM.

