

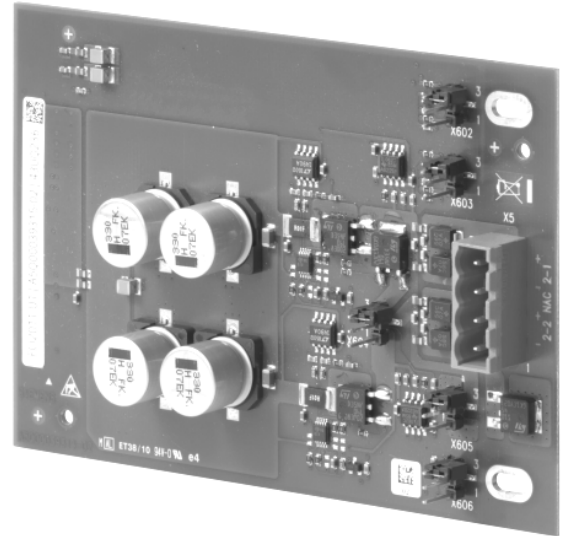
Cerberus™ PRO Fire Safety System

NAC Expansion Module

Model FCI2011-U1

ARCHITECT AND ENGINEER SPECIFICATIONS

- Adds notification appliance circuits (NACs) to the Model FC922 and the Model FC924 fire systems
- One (1) 'Class A' or two (2) 'Class B' NACs
- Supports horns, strobes, and horn / strobes synchronization
- Up to 3 Amps load per output
- Monitors for open-line and short-circuit conditions
- **UL 864 9th Edition Listed;**
FM, CSFM and NYC Fire Department Pending



Product Overview

The notification-appliance circuit (NAC) expansion module (Model FCI2011-U1) is an optional module that is connected to the peripheral boards (Models FCI2016-U1, FCI2017-U1), providing additional NACs to 252-point and 504-point systems, respectively.

One (1) 'Class A' or two (2) 'Class B' NACs are provided with the following Cerberus PRO systems:

- Model FC922 (252-point)
- Model FC924 (504-point)

Each NAC is rated at 3 Amps. Each NAC expansion module is monitored for open-line and short-circuit conditions.

Temperature and Humidity Range

Model FCI2011-U1 is **UL 864 9th Edition Listed** for indoor dry locations within a temperature range of 120+/-3°F (49+/-2°C) to 32+/-3°F (0+/-2°C) and a relative humidity of 93+/-2% at a temperature of 90+/-3°F (32+/-2°C).

Related Documentation

Product	Data Sheet Number
Cerberus PRO Peripheral Board [Model FCI2016-U1]	9802
Cerberus PRO Peripheral Board [Model FCI2017-U1]	9802

Details for Ordering

Model Number	Part Number	Description
FCI2011-U1	S54400-A54-A1	NAC Expansion Module

Cerberus PRO NAC Expansion Module **9808**

Technical Data

Electrical Ratings	Alarm current	3.0A, max. per circuit
	Supervisory current	1mA, max., typical
	NAC rating	for 'Special Application'
	Voltage	24VDC, nominal
Connection Terminals	Design	Removable terminal blocks
	Admissible cable cross-section	12 – 18 American Wire Gauge (AWG)
Physical Properties	Model FCI2011-U1 Dimensions: { W -x- H -x- D }	4.72" -x- 3.23" -x- 0.71" (12 cm. -x- 8.2 cm. -x- 1.8 cm.)
	Model FCI2011-U1 Weight:	0.75 Lbs. (341 g)

Notice: This marketing data sheet is not intended to be used for system design or installation purposes. For the most up-to-date information, refer to each product's installation instructions.