

Owner/Client:

WISHROCK GROUP
3 Canal Plaza - Suite 501
Portland, ME 04101

Drawn By: DT

Job No: Loring

Scale: AS NOTED

Date: 10.17.16

Status

Project

Loring House
- Landscape
Plan

Drawing Name

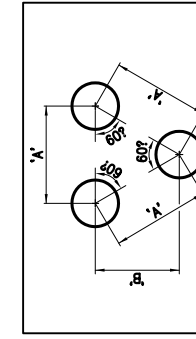
**PLANTING
PLAN**

Sheet

L-2

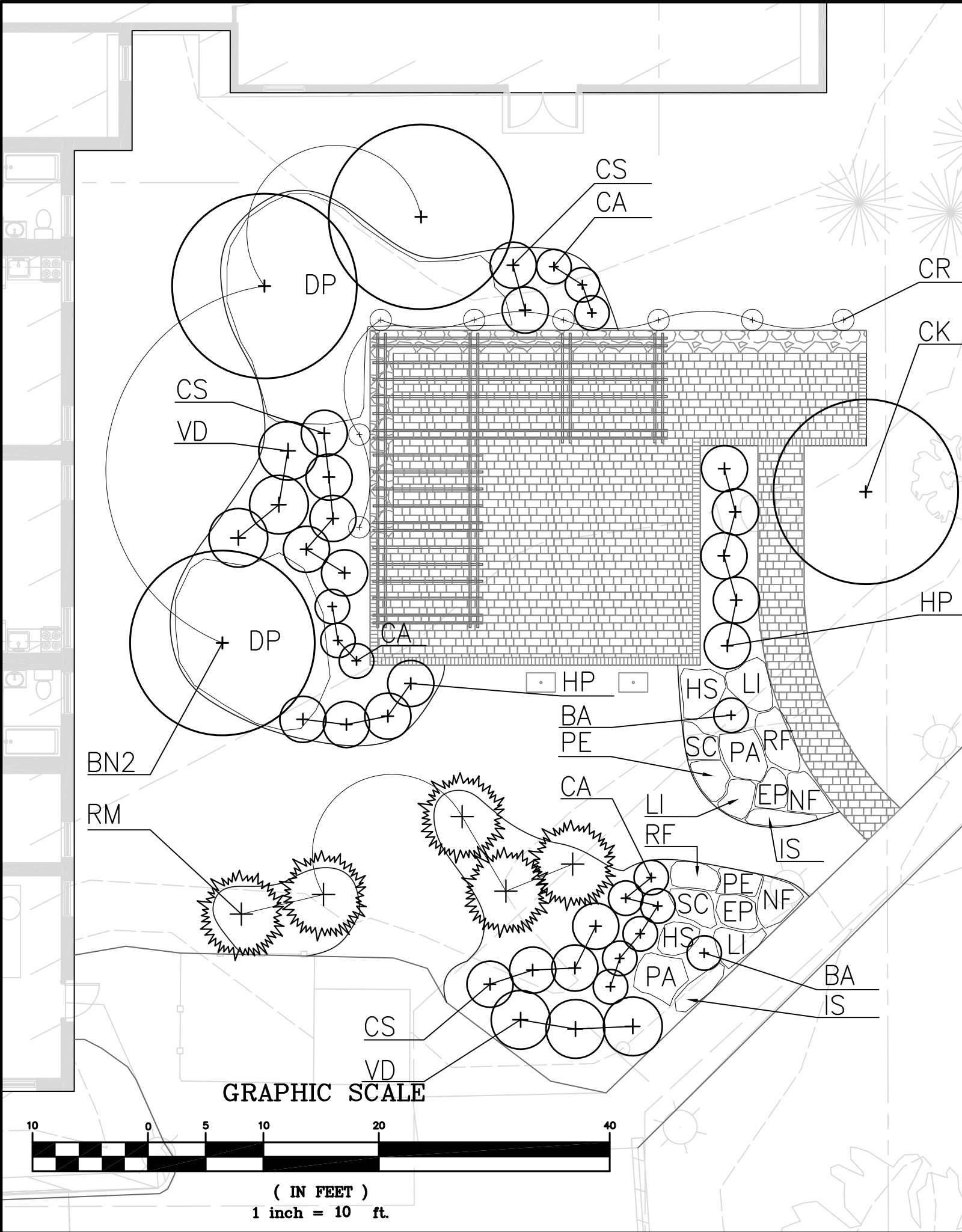
PLANT LIST

KEY	BOTANICAL NAME	COMMON NAME	PROP. SIZE	SPACING
<u>TREES</u>				
CK	CORNUS KOUSA	KOUSA DOGWOOD	7-8' CLUMP	PER PLAN
BN2	BETULA NIGRA 'HERITAGE'	HERITAGE RIVER BIRCH	8-10' 4-STEM BB.	PER PLAN
<u>SHRUBS</u>				
CA	CLETHRA ALNIFOLIA 'SIXTEEN CANDLES'	CLETHRA	#2 CONT.	36" O.C.
CS	CORNUS SERICEA 'BAILEY'	RED TWIG DOGWOOD	18-24" HT.	36" O.C.
HP	HYDRANGIA PANICULATA 'LITTLE QUICKFIRE'	FLOWERING HYDRANGIA	#3 CONT.	48" O.C.
RM	RHODODENDRON MAXIMUM 'ROSEUM'	ROSEBAY RHODODENDRON	4-5' HT.	PER PLAN
VD	VIBURNUM DENTATUM	ARROWWOOD VIBURNUM	#5 CONT.	5' O.C.
<u>PERENNIALS</u>				
BA	BAPTISIA AUSTRALIS	FALSE BLUE INDIGO	1 GAL. MIN.	18" O.C.
EP	ECHINACEA PURPUREA 'MAGNUS'	CONEFLOWER	1 GAL. MIN.	15" O.C.
HS	HEMEROCALLIS SPECIES(50% HAPPY RETURNS)	DAYLILY - MIX COLORS	1 GAL. MIN.	15" O.C.
IS	IRIS SIBIRICA	SIBERIAN IRIS	1 GAL. MIN.	18" O.C.
LI	LEUCANTHEMUM SUPERBUM 'BECKY'	SHASTA DAISY	1 GAL. MIN.	18" O.C.
PA	PEROVSKIA ATRIPLICIFOLIA	RUSSIAN SAGE	1 GAL. MIN.	15" O.C.
NF	NEPETA FAASSENII 'WALKER'S LOW'	CATMINT	1 GAL. MIN.	18" O.C.
PE	PENNISETUM ALOPECUROIDES	FOUNTAIN GRASS	1 GAL. MIN.	18" O.C.
RF	RUDBECKIA FULGIDA 'GOLDSTURM'	BLACK-EYED SUSAN	1 GAL. MIN.	15" O.C.
SC	SALVIA CARADONNA	BLUE SAGE	1 GAL. MIN.	15" O.C.
<u>GROUNDCOVERS/VINES</u>				
CR	CAMPIS RADICANS	TRUMPET VINE	1 GAL. MIN.	PER PLAN
DP	DENNSTAEDTIA PUNCTILOBA	HAYSCENTED FERN	#1SQ	18" O.C.



PLANT SPACING ('X')	ROW SPACING ('P')
6 IN. O.C.	5 IN. O.C.
8 IN. O.C.	7 IN. O.C.
10 IN. O.C.	8-1/2 IN. O.C.
12 IN. O.C.	10-1/2 IN. O.C.
15 IN. O.C.	13 IN. O.C.
18 IN. O.C.	16 IN. O.C.
24 IN. O.C.	21 IN. O.C.
30 IN. O.C.	28 IN. O.C.

PERENNIAL/GROUND COVER SPACING CHART
N.T.S.



GRAPHIC SCALE

(IN FEET)
1 inch = 10 ft.