

Consultant:

Richard Melling, PE
MEP DESIGN CONSULTANT
8824 Gotherstone Ct.
Raleigh, NC 27615
email: rmelling@mellingengineering.com

Revision:

11/25/15

Engineer of Record:



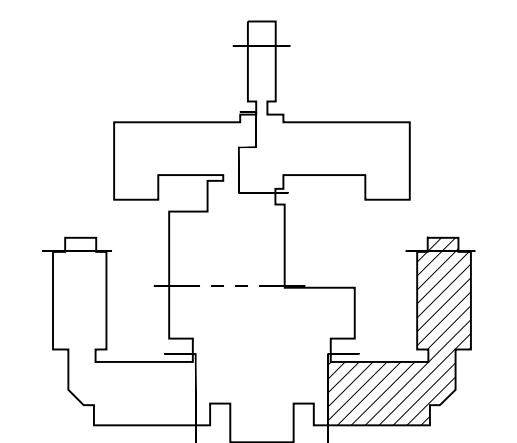
11/25/15

Drawn: RM

Checked: RM

Scale: 1/4" = 1'-0"

Key Plan:



Project Name:

LORING HOUSE

1125 Brighton Avenue
Portland, ME 04102

Sheet Name:

**Part Plan C
Second Floor**

Project Number:

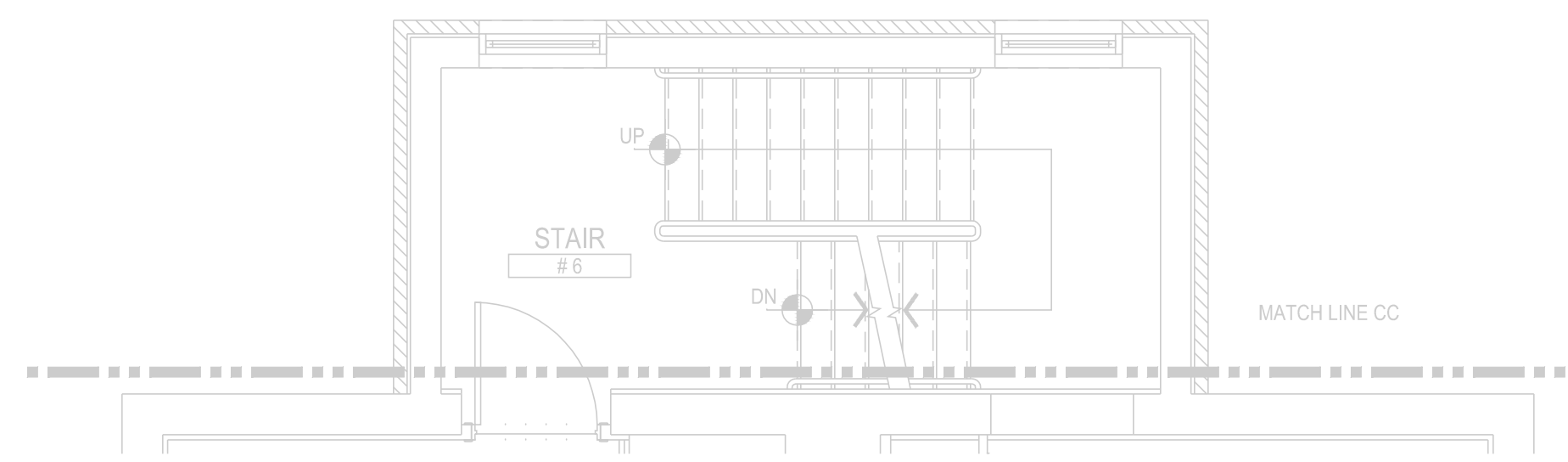
14165

Issue Date:

October 19, 2015

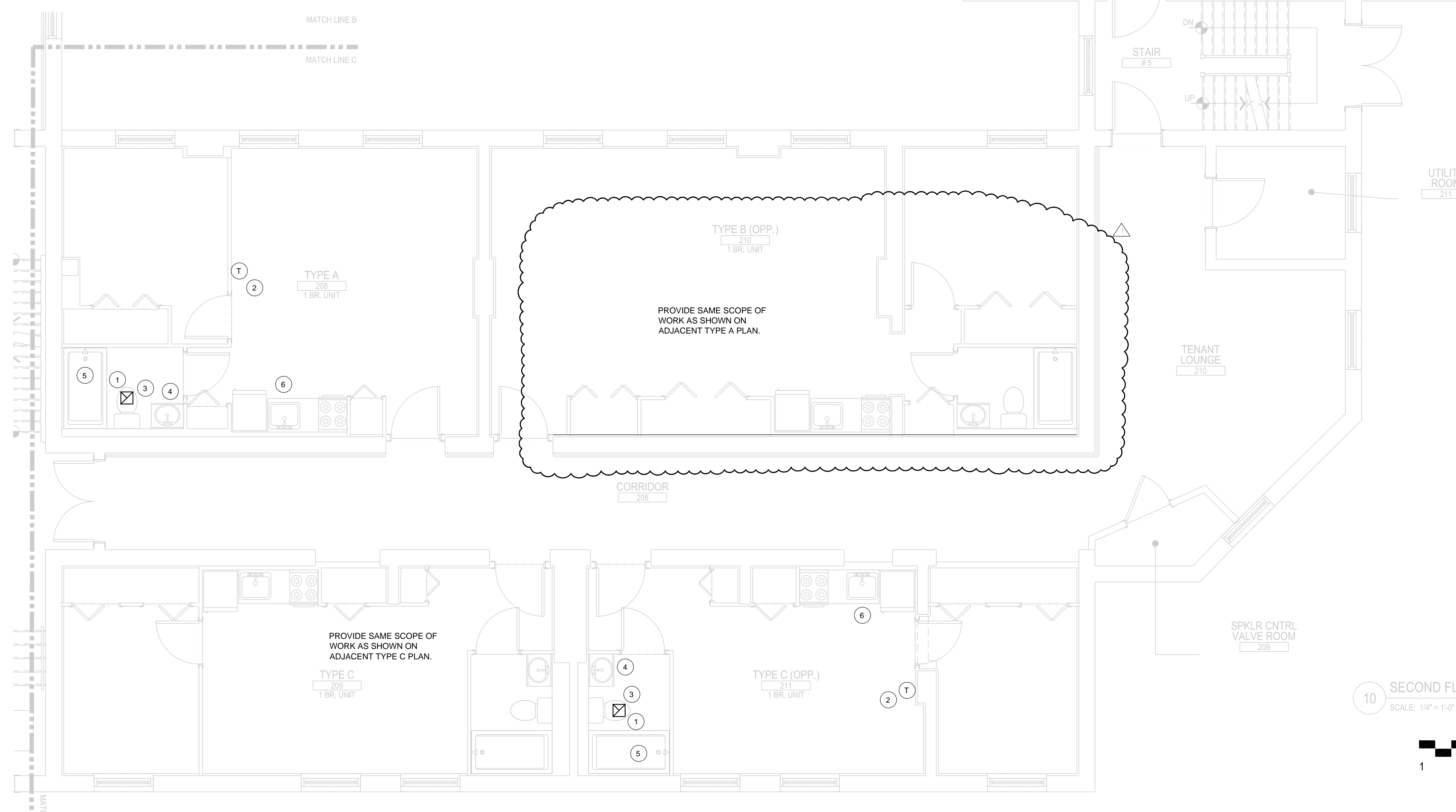
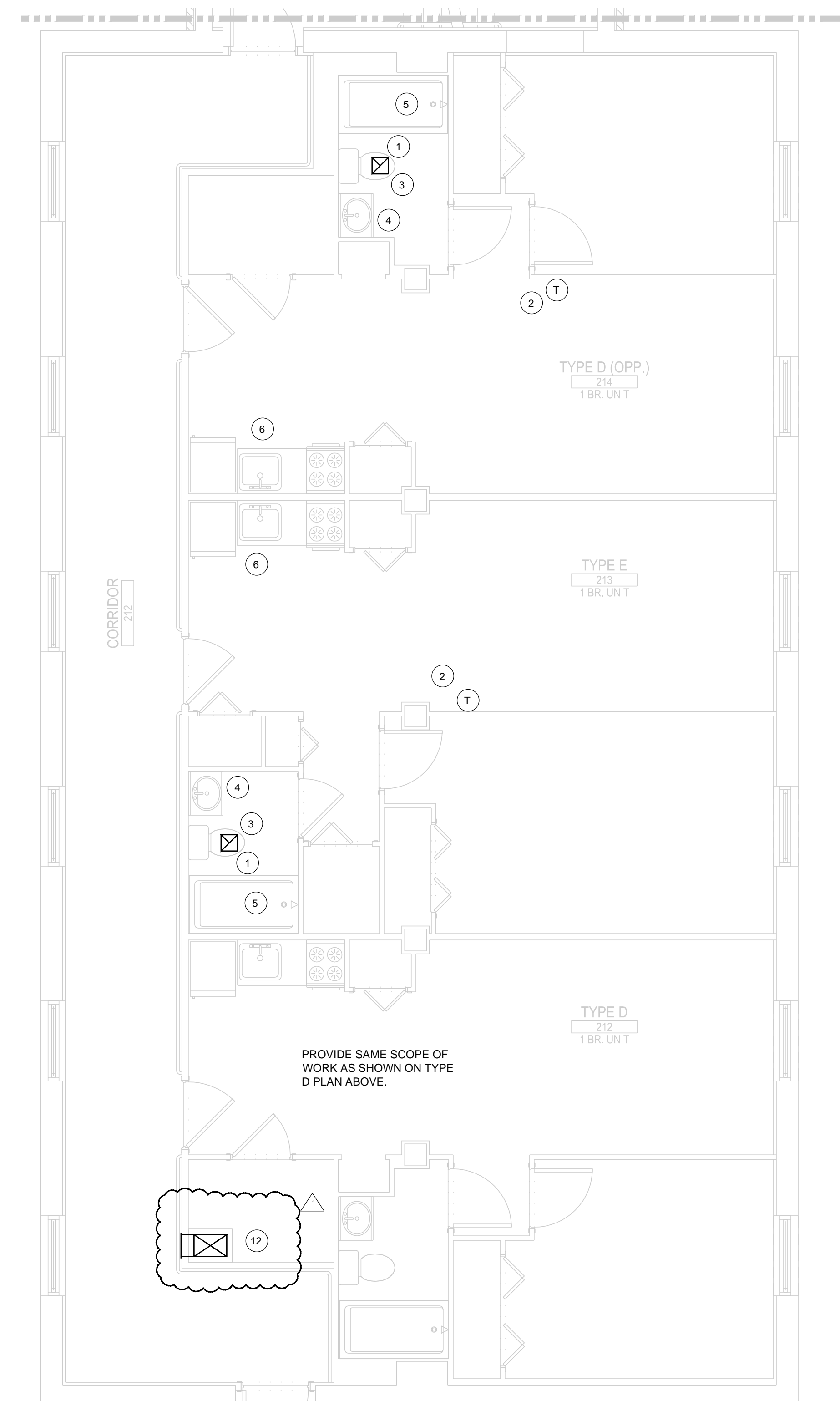
Sheet Number:

M2.02c



TYPICAL UNIT KEY NOTES:

- 1 PROVIDE NEW AIR KING MODEL FRAK505 ENERGY STAR RATED EXHAUST FAN WITH FIRE DAMPER IN EXISTING LOCATION IN ALL UNIT BATHROOMS. CONNECT TO EXISTING EXHAUST DUCT AND SWITCH.
- 2 PROVIDE NEW CHICAGO CONTROLS HC71SB THERMOSTAT IN EXISTING LOCATION IN ALL UNITS. THERMOSTAT SHALL HAVE A HEATING LIMIT OF 71 DEGREES AND SHALL AUTOMATICALLY RESET BACK TO 68 DEGREES AFTER THREE HOURS. VERIFY LOCATIONS IN FIELD.
- 3 PROVIDE NEW WATER CLOSET, WAX RING SEAL, SHUT-OFF VALVE, ESCUTCHEON PLATE, AND SUPPLY LINE IN ALL UNIT BATHROOMS. PROVIDE UNIT PRICE FOR NEW TOILET FLANGE AS NEEDED.
- 4 PROVIDE NEW LAVATORY FAUCET, SHUT-OFF VALVES, ESCUTCHEON PLATES, SUPPLY LINES, TRAP, AND DRAIN IN NEW VANITY IN ALL UNIT BATHROOMS.
- 5 PROVIDE NEW LOW-FLOW SHOWER HEAD IN ALL UNIT BATHROOMS.
- 6 PROVIDE NEW KITCHEN SINK, FAUCET, DISPOSAL, SHUT-OFF VALVES, ESCUTCHEON PLATES, SUPPLY LINES, TRAP AND DRAIN IN ALL UNIT KITCHENS.
- 7 PROVIDE NEW AIR KING MODEL FRAK505 WITH FIRE DAMPER IN NEW LOCATION IN ACCESSIBLE BATHROOM AND EXTEND DUCT TO CONNECT TO EXISTING EXHAUST DUCT AT EXISTING EXHAUST FAN.
- 8 PROVIDE NEW WATER CLOSET, WAX RING SEAL, TOILET FLANGE, SHUT-OFF VALVE, ESCUTCHEON PLATE, AND SUPPLY LINE IN NEW LOCATION IN HP ACCESSIBLE BATHROOMS. PROVIDE NEW 1/2" CW AND 3" DRAIN FROM TOILET TO EXISTING PIPING.
- 9 PROVIDE NEW LAVATORY, FAUCET, SHUT-OFF VALVES, ESCUTCHEON PLATES, SUPPLY LINES, TRAP, AND DRAIN IN NEW LOCATION IN HP ACCESSIBLE BATHROOMS. PROVIDE NEW 1/2" CW AND HW, 2" DRAIN, AND 2" VENT FROM SINK TO EXISTING PIPING.
- 10 PROVIDE NEW ACCESSIBLE TUBS (OR ROLL-IN SHOWER - SEE ARCH. PLANS) WITH ADJUSTABLE SEATS IN NEW LOCATION AT ACCESSIBLE APARTMENTS. PROVIDE NEW ANTI-SCALD PRESSURE BALANCED MIXING VALVE, LOW FLOW HAND HELD SHOWER HEAD WITH SLIDE RAIL, AND FLEXIBLE HOSE. PROVIDE NEW 1/2" HW AND CW, AND 2" DRAIN TO EXISTING PIPING.
- 11 PROVIDE NEW KITCHEN SINK IN NEW LOCATION IN HP ACCESSIBLE UNITS. PROVIDE NEW 1/2" HW AND CW, 2" DRAIN, AND 1 1/2" VENT FROM NEW SINK TO EXISTING WATER AND DRAIN PIPING.
- 12 PROVIDE NEW 18"X12" SUPPLY DUCT FROM UNIT DOWN THROUGH THREE FLOORS IN NEW DUCT SHAFT IN UNIT CLOSETS. PROVIDE 18"X12" SUPPLY DIFFUSER WITH FIRE DAMPER IN CORRIDOR WALL ON EACH FLOOR.



10 SECOND FLOOR PART PLANS C
SCALE: 1/4" = 1'-0"

