

Consultant:

Richard Melling, PE  
MEP DESIGN CONSULTANT  
8824 Gatherstone Ct.  
Raleigh, NC 27615  
email: rmelling@mellingengineering.com

Revision:

Engineer of Record:



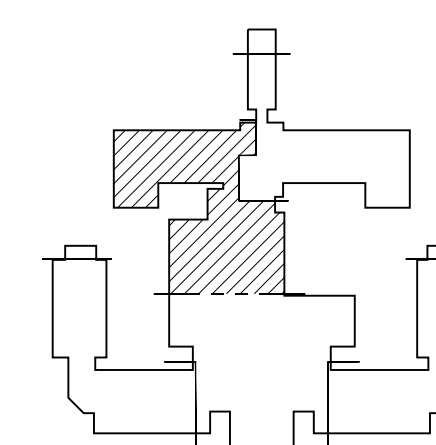
11/25/15

Drawn: RM

Checked: RM

Scale: 1/4" = 1'-0"

Key Plan:



Project Name:

**LORING HOUSE**

1125 Brighton Avenue  
Portland, ME 04102

Sheet Name:

**Part Plan D  
First Floor**

Project Number:

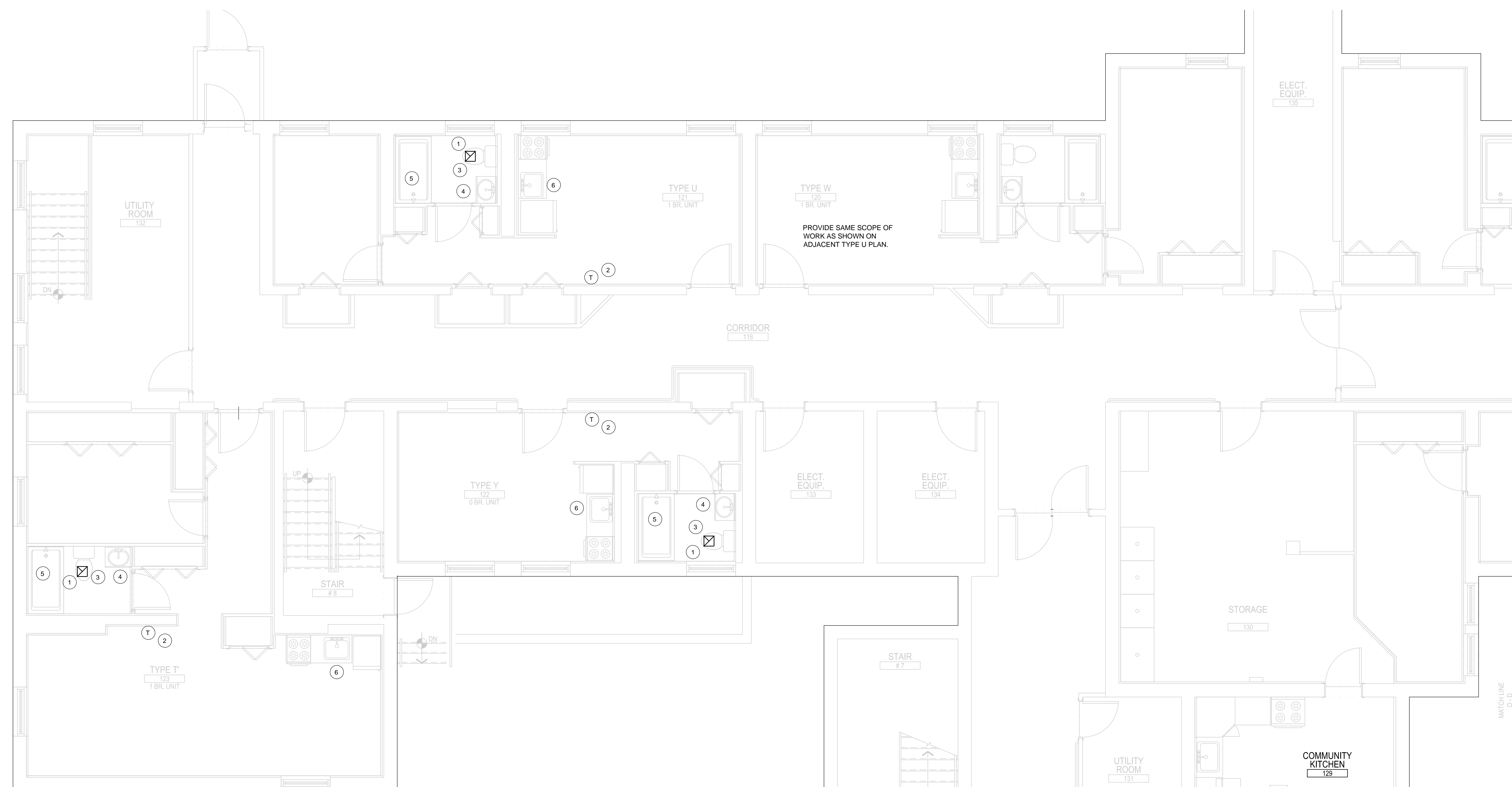
14165

Issue Date:

October 19, 2015

Sheet Number:

**M2.01d**

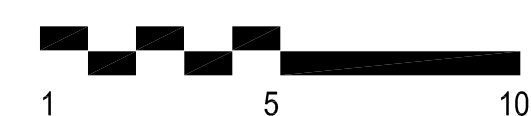


**TYPICAL UNIT KEY NOTES:**

- 1 PROVIDE NEW AIR KING MODEL FRANKS05 ENERGY STAR RATED EXHAUST FAN WITH FIRE DAMPER IN EXISTING LOCATION IN ALL UNIT BATHROOMS. CONNECT TO EXISTING EXHAUST DUCT AND SWITCH.
- 2 PROVIDE NEW CHICAGO CONTROLS HC71SB THERMOSTAT IN EXISTING LOCATION IN ALL UNITS. THERMOSTAT SHALL HAVE A HEATING LIMIT OF 71 DEGREES AND SHALL AUTOMATICALLY RESET BACK TO 68 DEGREES AFTER THREE HOURS. VERIFY LOCATIONS IN FIELD.
- 3 PROVIDE NEW WATER CLOSET, WAX RING SEAL, SHUT-OFF VALVE, ESCUTCHEON PLATE, AND SUPPLY LINE IN ALL UNIT BATHROOMS. PROVIDE UNIT PRICE FOR NEW TOILET FLANGE AS NEEDED.
- 4 PROVIDE NEW LAVATORY FAUCET, SHUT-OFF VALVES, ESCUTCHEON PLATES, SUPPLY LINES, TRAP, AND DRAIN IN NEW VANITY IN ALL UNIT BATHROOMS.
- 5 PROVIDE NEW LOW-FLOW SHOWER HEAD IN ALL UNIT BATHROOMS.
- 6 PROVIDE NEW KITCHEN SINK, FAUCET, DISPOSAL, SHUT-OFF VALVES, ESCUTCHEON PLATES, SUPPLY LINES, TRAP AND DRAIN IN ALL UNIT KITCHENS.
- 7 PROVIDE NEW AIR KING MODEL FRANKS05 WITH FIRE DAMPER IN NEW LOCATION IN ACCESSIBLE BATHROOM AND EXTEND DUCT TO CONNECT TO EXISTING EXHAUST DUCT AT EXISTING EXHAUST FAN.
- 8 PROVIDE NEW WATER CLOSET, WAX RING SEAL, TOILET FLANGE, SHUT-OFF VALVE, ESCUTCHEON PLATE, AND SUPPLY LINE IN NEW LOCATION IN HP ACCESSIBLE BATHROOMS. PROVIDE NEW 1/2" CW AND 3" DRAIN FROM TOILET TO EXISTING PIPING.
- 9 PROVIDE NEW LAVATORY, FAUCET, SHUT-OFF VALVES, ESCUTCHEON PLATES, SUPPLY LINES, TRAP, AND DRAIN IN NEW LOCATION IN HP ACCESSIBLE BATHROOMS. PROVIDE NEW 1/2" CW AND HW, 2" DRAIN, AND 2" VENT FROM SINK TO EXISTING PIPING.
- 10 PROVIDE NEW ACCESSIBLE TUBS (OR ROLL-IN SHOWER - SEE ARCH. PLANS) WITH ADJUSTABLE SEATS IN NEW LOCATION AT ACCESSIBLE APARTMENTS. PROVIDE NEW ANTI-SCALD PRESSURE BALANCED MIXING VALVE, LOW FLOW HAND HELD SHOWER HEAD WITH SLIDE RAIL AND FLEXIBLE HOSE. PROVIDE NEW 1/2" HW AND CW, AND 2" DRAIN TO EXISTING PIPING.
- 11 PROVIDE NEW KITCHEN SINK IN NEW LOCATION IN HP ACCESSIBLE UNITS. PROVIDE NEW 1/2" HW AND CW, 2" DRAIN, AND 1 1/2" VENT FROM NEW SINK TO EXISTING WATER AND DRAIN PIPING.
- 12 PROVIDE NEW OUTDOOR TEMPERATURE RESET CONTROLS FOR NEW CENTRAL HEATING BOILERS. TEST AND RECALIBRATE BOILERS TO INSURE THEY ARE RUNNING AT PEAK EFFICIENCY.

10 FIRST FLOOR PART PLAN D

SCALE: 1/4" = 1'-0"



MATCH LINE  
C-C