

Consultant:

Richard Melling, PE
MEP DESIGN CONSULTANT
8824 Gatherstone Ct.
Raleigh, NC 27615
email: rmelling@mellingengineering.com

Revision:

1	11/25/15

Engineer of Record:



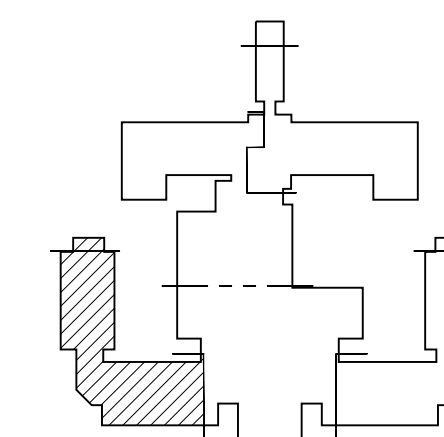
11/25/15

Drawn: RM

Checked: RM

Scale: 1/4" = 1'-0"

Key Plan:



Project Name:
LORING HOUSE

1125 Brighton Avenue
Portland, ME 04102

Sheet Name:

**Part Plan A
Fourth Floor**

Project Number:

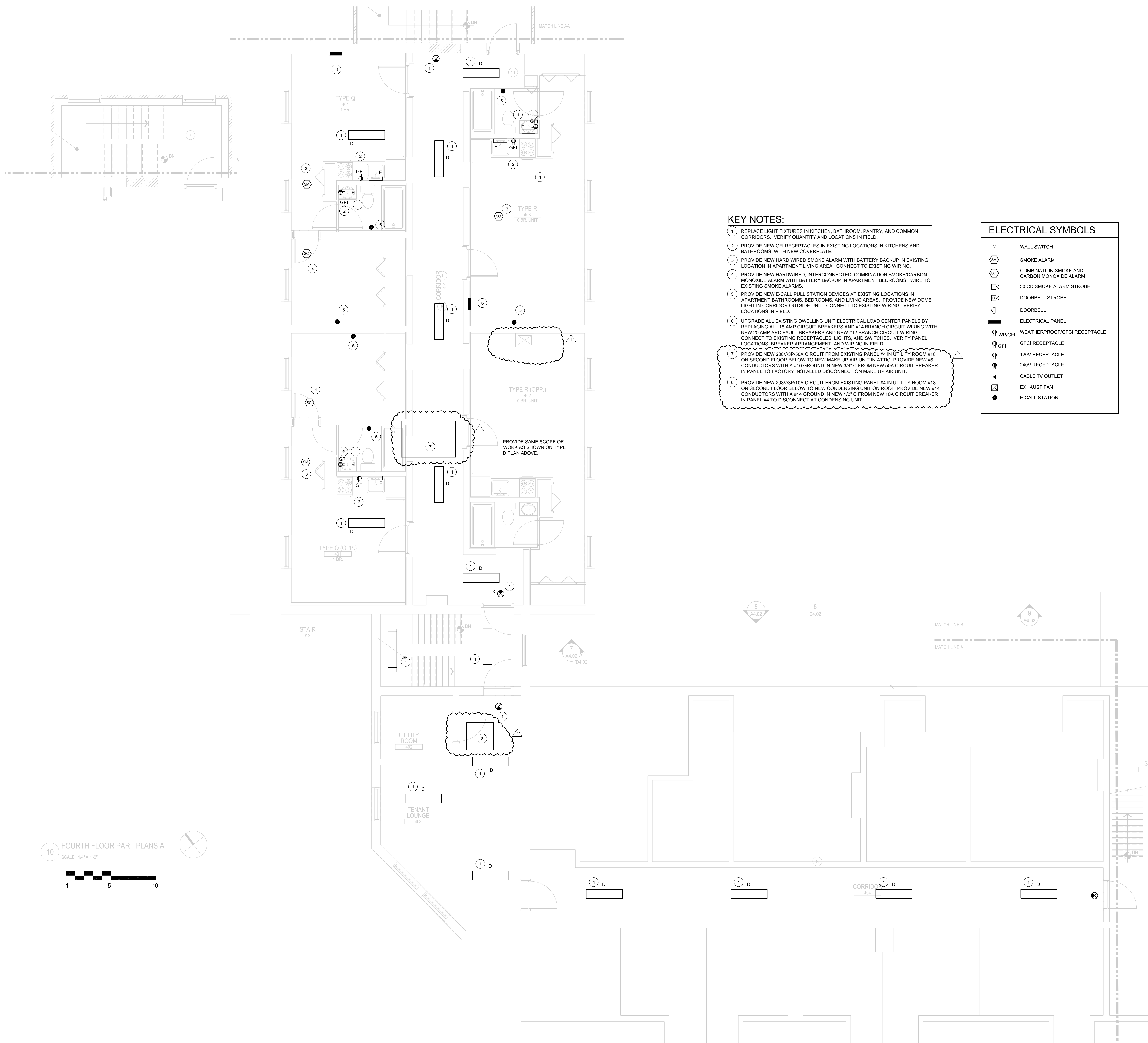
14165

Issue Date:

October 19, 2015

Sheet Number:

E2.04a



KEY NOTES:

- 1 REPLACE LIGHT FIXTURES IN KITCHEN, BATHROOM, PANTRY, AND COMMON CORRIDORS. VERIFY QUANTITY AND LOCATIONS IN FIELD.
- 2 PROVIDE NEW GFI RECEPTACLES IN EXISTING LOCATIONS IN KITCHENS AND BATHROOMS WITH NEW COVERPLATE.
- 3 PROVIDE NEW HARD WIRED SMOKE ALARM WITH BATTERY BACKUP IN EXISTING LOCATION IN APARTMENT LIVING AREA. CONNECT TO EXISTING WIRING.
- 4 PROVIDE NEW HARDWIRED, INTERCONNECTED, COMBINATION SMOKE/CARBON MONOXIDE ALARM WITH BATTERY BACKUP IN APARTMENT BEDROOMS. WIRE TO EXISTING SMOKE ALARMS.
- 5 PROVIDE NEW E-CALL PULL STATION DEVICES AT EXISTING LOCATIONS IN APARTMENT BATHROOMS, BEDROOMS, AND LIVING AREAS. PROVIDE NEW DOME LIGHT IN CORRIDOR OUTSIDE UNIT. CONNECT TO EXISTING WIRING. VERIFY LOCATIONS IN FIELD.
- 6 UPGRADE ALL EXISTING DWELLING UNIT ELECTRICAL LOAD CENTER PANELS BY REPLACING ALL 15 AMP CIRCUIT BREAKERS AND #14 BRANCH CIRCUIT WIRING WITH NEW 20 AMP ARC FAULT BREAKERS AND NEW #12 BRANCH CIRCUIT WIRING. CONNECT TO EXISTING RECEPTACLES, LIGHTS, AND SWITCHES. VERIFY PANEL LOCATIONS, BREAKER ARRANGEMENT, AND WIRING IN FIELD.
- 7 PROVIDE NEW 208V/3P/50A CIRCUIT FROM EXISTING PANEL #4 IN UTILITY ROOM #18 ON SECOND FLOOR BELOW TO NEW MAKE UP AIR UNIT IN ATTIC. PROVIDE NEW #6 CONDUCTORS WITH A #10 GROUND IN NEW 3/4" C FROM NEW 50A CIRCUIT BREAKER IN PANEL TO FACTORY INSTALLED DISCONNECT ON MAKE UP AIR UNIT.
- 8 PROVIDE NEW 208V/3P/10A CIRCUIT FROM EXISTING PANEL #4 IN UTILITY ROOM #18 ON SECOND FLOOR BELOW TO NEW CONDENSING UNIT ON ROOF. PROVIDE NEW #14 CONDUCTORS WITH A #10 GROUND IN NEW 1/2" C FROM NEW 10A CIRCUIT BREAKER IN PANEL #4 TO DISCONNECT AT CONDENSING UNIT.

ELECTRICAL SYMBOLS

SW	WALL SWITCH
SM	SMOKE ALARM
CC	COMBINATION SMOKE AND CARBON MONOXIDE ALARM
SS	30 CD SMOKE ALARM STROBE
DS	DOORBELL STROBE
DB	DOORBELL
EP	ELECTRICAL PANEL
WP/GFI	WEATHERPROOF/GFCI RECEPTACLE
GFI	GFCI RECEPTACLE
R	120V RECEPTACLE
240	240V RECEPTACLE
CTO	CABLE TV OUTLET
EF	EXHAUST FAN
ES	E-CALL STATION

