

Consultant:

Richard Melling, PE
MEP DESIGN CONSULTANT
8824 Gatherstone Ct.
Raleigh, NC 27615
email: rmelling@mellingengineering.com

Revision:

1	11/25/15

Engineer of Record:



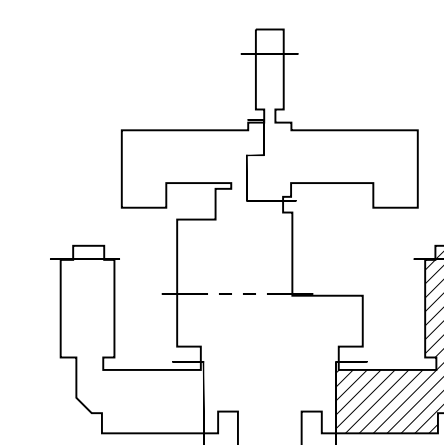
11/25/15

Drawn: RM

Checked: RM

Scale: 1/4" = 1'-0"

Key Plan:



Project Name:

LORING HOUSE

1125 Brighton Avenue
Portland, ME 04102

Sheet Name:

**Part Plan C
Second Floor**

Project Number:

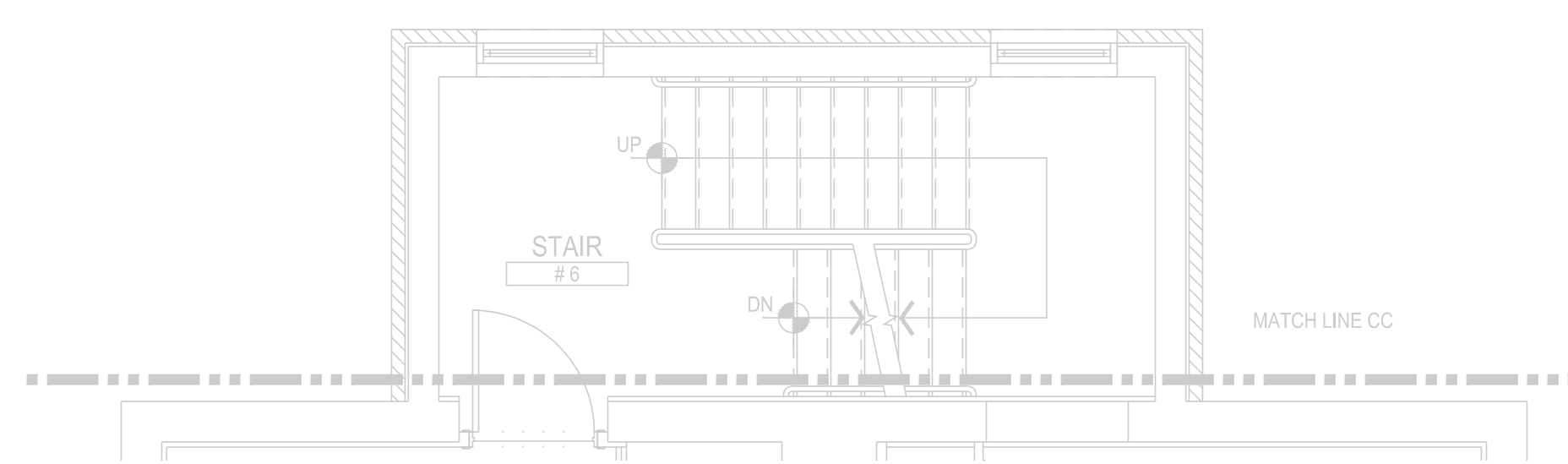
14165

Issue Date:

October 19, 2015

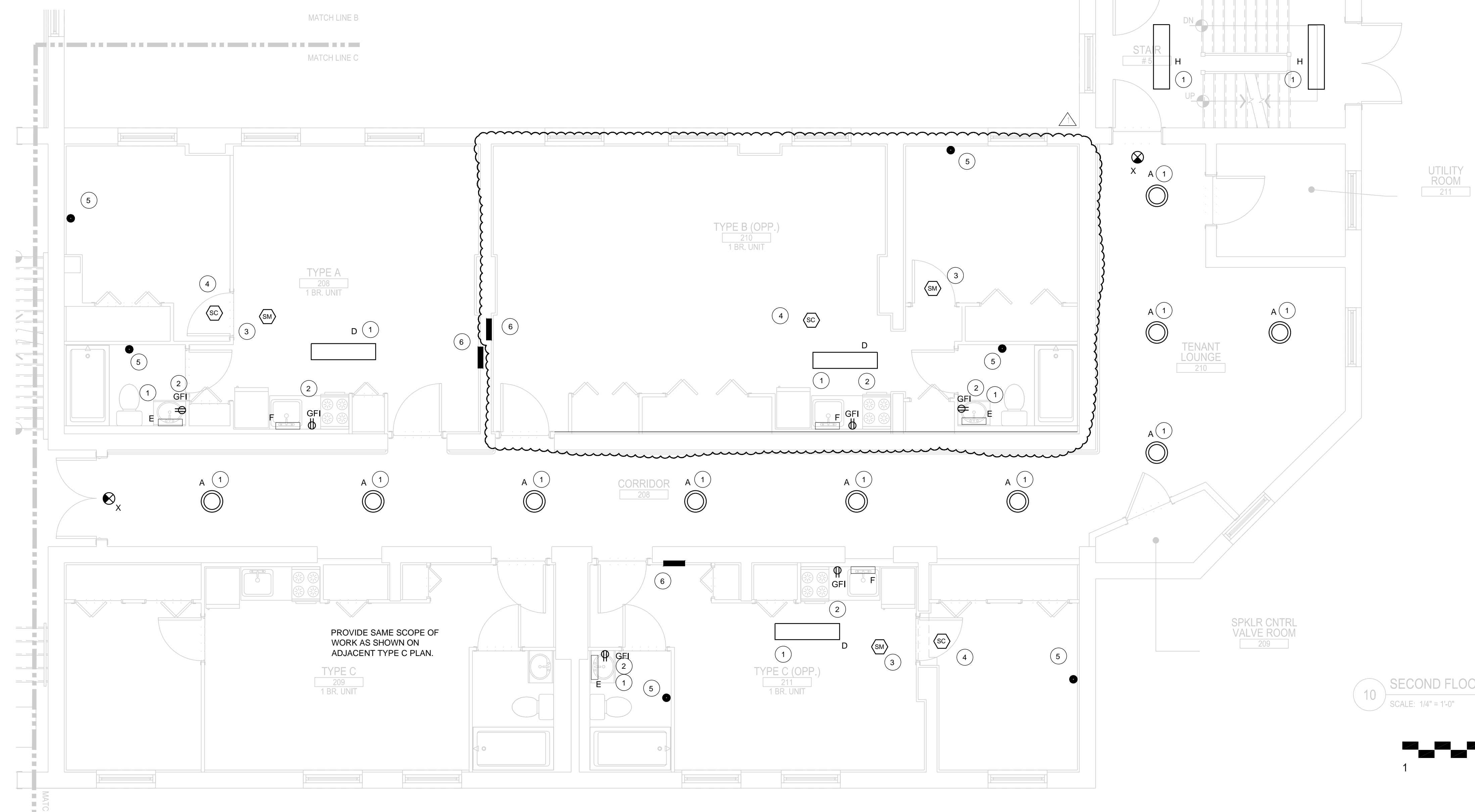
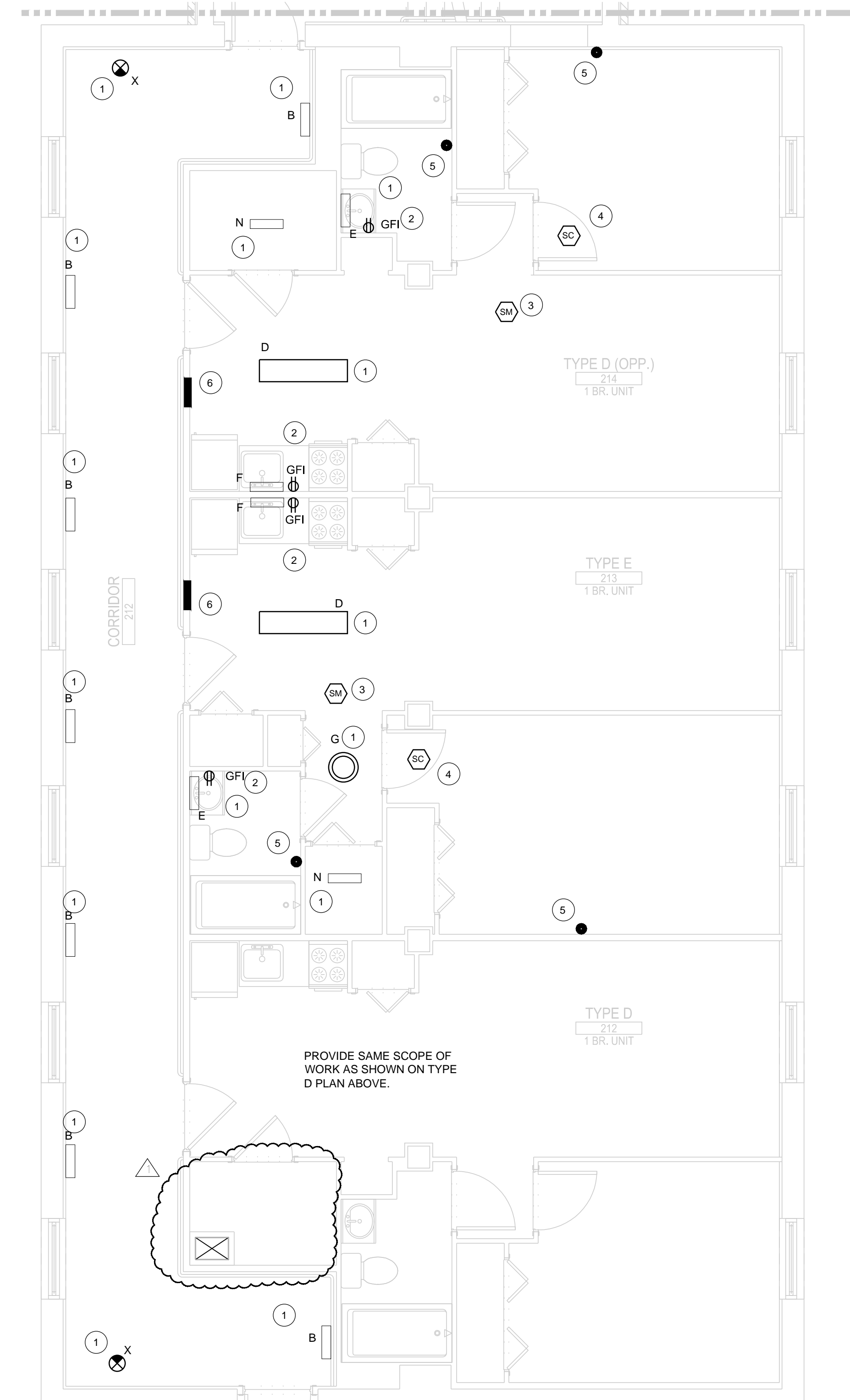
Sheet Number:

E2.02c



KEY NOTES:

- 1 REPLACE LIGHT FIXTURES IN KITCHEN, BATHROOM, PANTRY, COMMON CORRIDORS, STAIRWAYS, AND EXTERIOR. VERIFY QUANTITY AND LOCATIONS IN FIELD.
- 2 PROVIDE NEW GFI RECEPTACLES IN EXISTING LOCATIONS IN KITCHENS AND BATHROOMS, WITH NEW COVERPLATE.
- 3 PROVIDE NEW HARD WIRED SMOKE ALARM WITH BATTERY BACKUP IN EXISTING LOCATION IN APARTMENT LIVING AREA. CONNECT TO EXISTING WIRING.
- 4 PROVIDE NEW HARDWIRED, INTERCONNECTED COMBINATION SMOKE/CARBON MONOXIDE ALARM WITH BATTERY BACK UP IN APARTMENT BEDROOMS. WIRE TO EXISTING SMOKE ALARM.
- 5 PROVIDE NEW E-CALL PULL STATION DEVICES AT EXISTING LOCATIONS IN APARTMENT BATHROOMS, BEDROOMS, AND LIVING AREAS. PROVIDE NEW DOME LIGHT IN CORRIDOR OUTSIDE UNIT. CONNECT TO EXISTING WIRING. VERIFY LOCATIONS IN FIELD.
- 6 UPGRADE ALL EXISTING DWELLING UNIT ELECTRICAL LOAD CENTER PANELS BY REPLACING ALL 15 AMP CIRCUIT BREAKERS AND #14 BRANCH CIRCUIT WIRING WITH NEW 20 AMP ARC FAULT BREAKERS AND NEW #12 BRANCH CIRCUIT WIRING. CONNECT TO EXISTING RECEPTACLES, LIGHTS, AND SWITCHES. VERIFY PANEL LOCATIONS, BREAKER ARRANGEMENT, AND WIRING IN FIELD.



10 SECOND FLOOR PART PLANS C
SCALE: 1/4" = 1'-0"

