

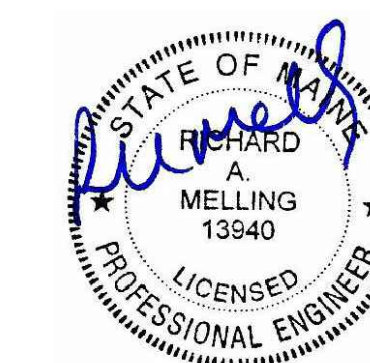
Consultant:

Richard Melling, PE
MEP DESIGN CONSULTANT
8824 Gatherstone Ct.
Raleigh, NC 27615
email: rmelling@mellingengineering.com

Revision:

△ 11/25/15

Engineer of Record:



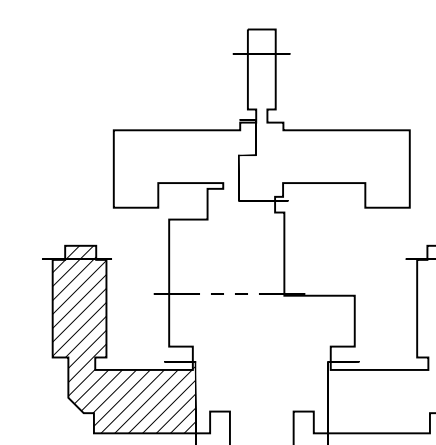
11/25/15

Drawn: RM

Checked: RM

Scale: 1/4" = 1'-0"

Key Plan:



Project Name:

LORING HOUSE

1125 Brighton Avenue
Portland, ME 04102

Sheet Name:

**Part Plan A
First Floor**

Project Number:

14165

Issue Date:

October 19, 2015

Sheet Number:

E2.01a

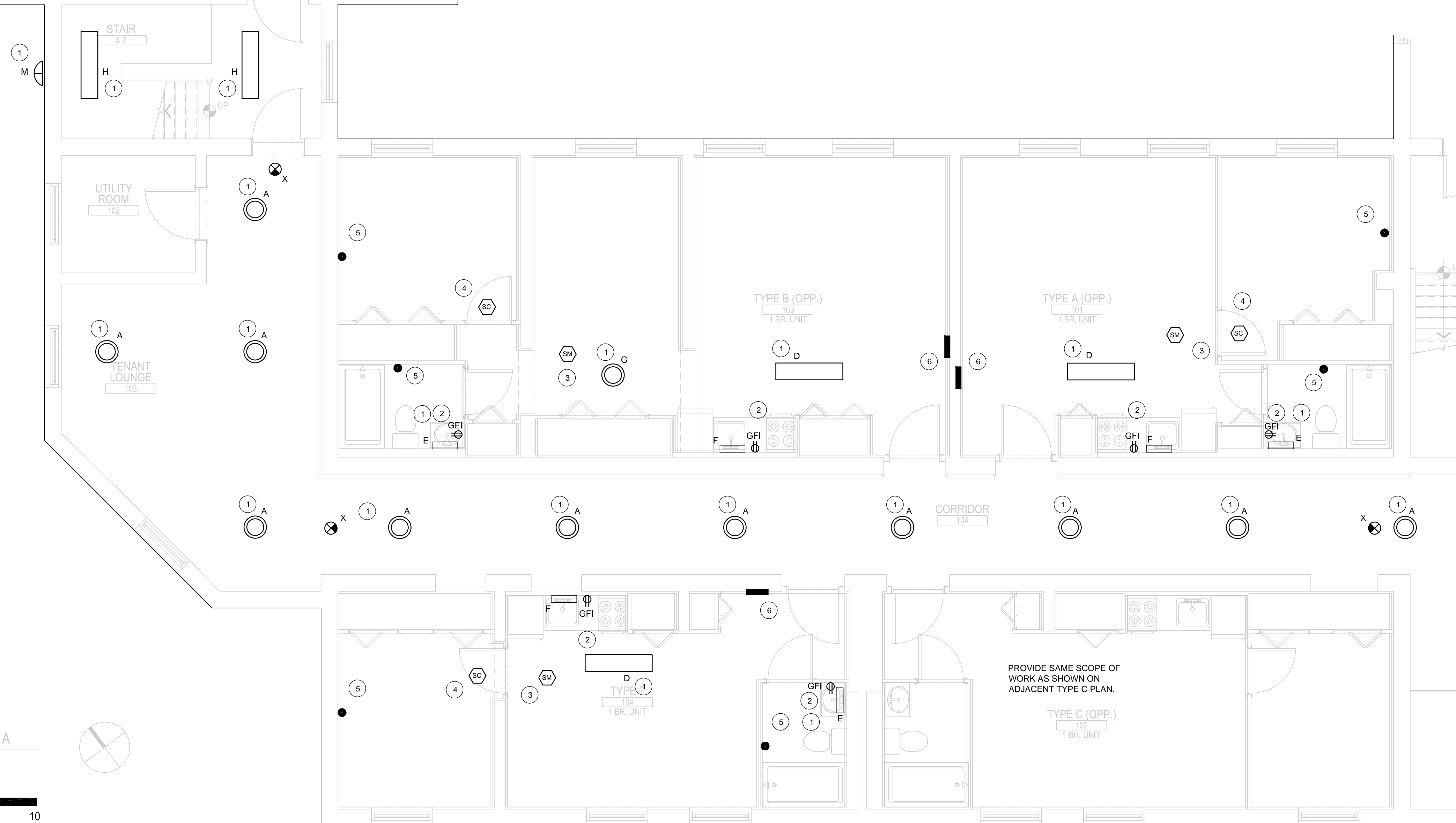
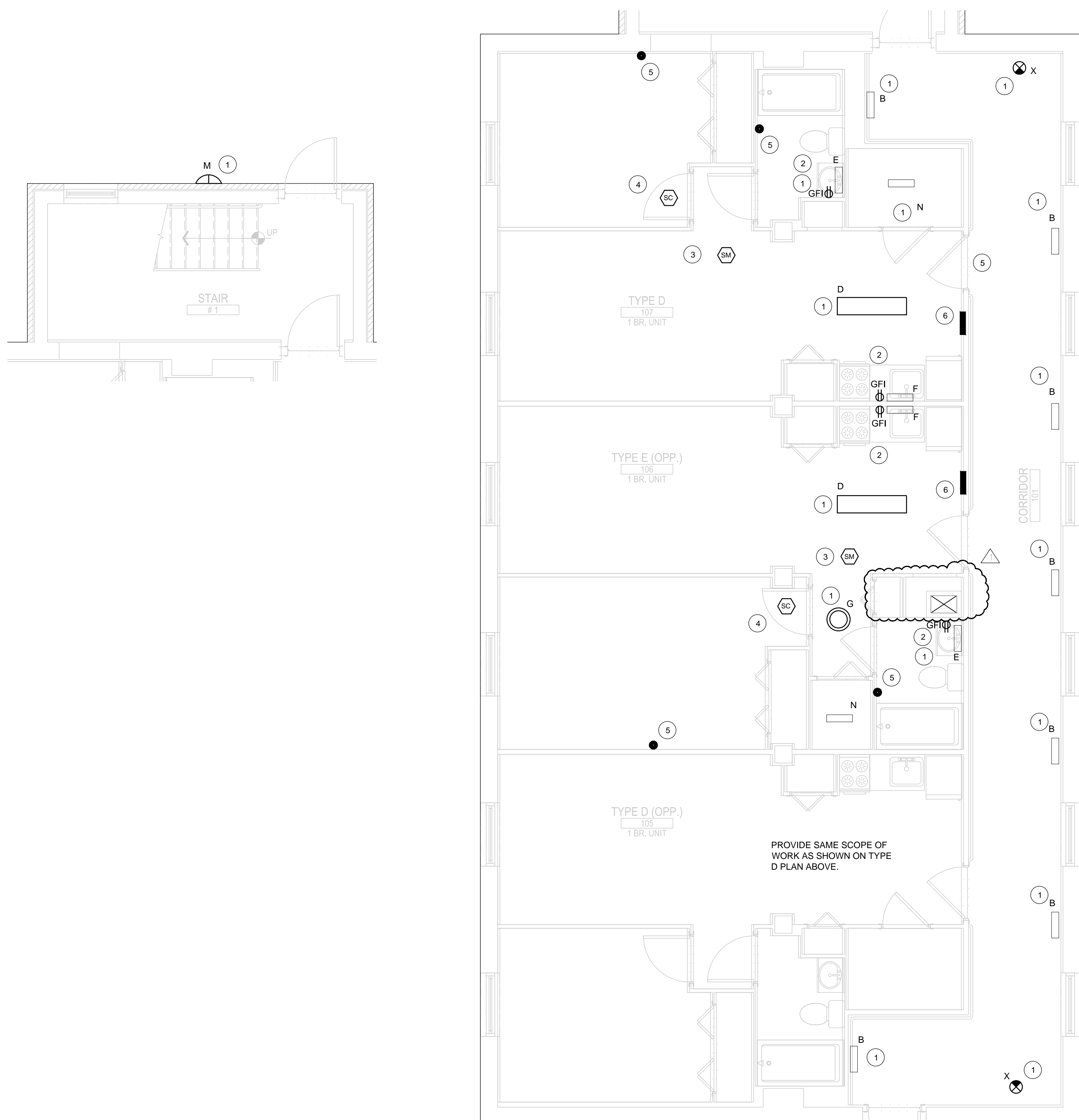
APARTMENTS LUMINAIRE SCHEDULE							
MARK	SYMBOL	LOCATION	DESCRIPTION	MFR. & CATALOG #	LAMPS	REMARKS	WATTAGE
A	○	CORRIDORS	SURFACE MOUNT	Y LIGHTING WAC-GEOS-1-DWELED	LED		12.5
B	▭	CORRIDORS	WALL MOUNTED	LITHONIA STL2-42L-LP840-N80	LED		25
C	□	COMMON AREAS	RECESSED	LITHONIA 2RTL2-40L-E21-LP840-N80	LED		40
D	▭	APT. KITCHEN	SURFACE MOUNTED	LITHONIA SB232MV	(2) 32W T8		64
E	▭	APT. VANITY	WALL MOUNTED	LITHONIA 11852RE-GE810IS	(2) 17W T8		34
F	▭	APT. KITCHEN	UNDER CABINET	LITHONIA UC24-E120-LP	(2) 8W T5		16
G	○	APT. HALLWAY	CEILING MOUNTED	LITHONIA FMLR11 213DIT	(2) 13W CFL		26
H	▭	STAIRWAYS	SURFACE MOUNTED	LITHONIA WL4-30L-SLD-LP840-N80	LED	WITH NEST OCC. SENSOR AND DIM50 DIMMING	28
J	○	TENANT LOUNGE	PENDANT	LITHONIA 11786	(3) 18W CFL		54
K	□	OFFICES	SURFACE MOUNTED	LITHONIA 2VTLX2-33L-ADP-LP840	LED		34
L	▭	COMMON KITCHEN	SURFACE MOUNTED	LITHONIA SB232MV	(2) 32W T8		64
M	▭	EXTERIOR	WALL MOUNTED	LITHONIA CSXW-30C- 700-40K-PE-DBXKD	LED		69
N	▭	APT. PANTRY	SURFACE MOUNTED	LITHONIA SB217MV	(2) 17W T8		34
X	⊗	EXIT SIGN	SURFACE MOUNTED	LITHONIA LQMSW3R120Z77ELN	LED		4.3

KEY NOTES:

- 1 REPLACE LIGHT FIXTURES IN KITCHEN, BATHROOM, PANTRY, COMMON CORRIDORS, STAIRWAYS, AND EXTERIOR. VERIFY QUANTITY AND LOCATIONS IN FIELD.
- 2 PROVIDE NEW GFI RECEPTACLES IN EXISTING LOCATIONS IN KITCHENS AND BATHROOMS, WITH NEW COVERPLATE.
- 3 PROVIDE NEW HARD WIRED SMOKE ALARM WITH BATTERY BACKUP IN EXISTING LOCATION IN APARTMENT LIVING AREA. CONNECT TO EXISTING WIRING.
- 4 PROVIDE NEW HARDWIRED, INTERCONNECTED COMBINATION SMOKE-CARBON MONOXIDE ALARM WITH BATTERY BACKUP IN APARTMENT BEDROOMS. WIRE TO EXISTING SMOKE ALARM.
- 5 PROVIDE NEW E-CALL PULL STATION DEVICES AT EXISTING LOCATIONS IN APARTMENT BATHROOMS, BEDROOMS, AND LIVING AREAS. PROVIDE NEW DOME LIGHT IN CORRIDOR OUTSIDE UNIT. CONNECT TO EXISTING WIRING. VERIFY PANEL LOCATIONS IN FIELD.
- 6 UPGRADE ALL EXISTING DWELLING UNIT ELECTRICAL LOAD CENTER PANELS BY REPLACING ALL 15 AMP CIRCUIT BREAKERS AND #14 BRANCH CIRCUIT WIRING WITH NEW 20 AMP ARC FAULT BREAKERS AND NEW #12 BRANCH CIRCUIT WIRING. CONNECT TO EXISTING RECEPTACLES, LIGHTS, AND SWITCHES. VERIFY PANEL LOCATIONS, BREAKER ARRANGEMENT, AND WIRING IN FIELD.

ELECTRICAL SYMBOLS

⏻	WALL SWITCH
⏻-OS	WALL SWITCH WITH OCC. SENSOR
⊕	SMOKE ALARM
⊕	COMBINATION SMOKE AND CARBON MONOXIDE ALARM
⊕	30 CD SMOKE ALARM STROBE
⊕	DOORBELL STROBE
⏻	DOORBELL
⏻	ELECTRICAL PANEL
⏻	WEATHERPROOF/GFCI RECEPTACLE
⏻	GFCI RECEPTACLE
⏻	120V RECEPTACLE
⏻	240V RECEPTACLE
⏻	CABLE TV OUTLET
⏻	EXHAUST FAN
●	E-CALL STATION



10 FIRST FLOOR PART PLAN A
SCALE: 1/4" = 1'-0"

