

Consultant:

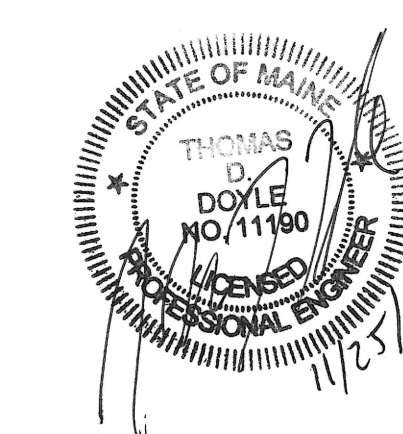


SERVING OUR CLIENTS IN THE U.S.A. & CANADA
101 County Road, Westbrook, Maine 04092 | 14 School Street, Suite 203A, Auburn, Maine 04293 | 1000 Park Drive, Houston, TX 77056
Tel: 207-344-6100 | Fax: 207-344-6101 | Tel: 207-544-0200 | Fax: 207-544-0201 | Tel: 281-744-2200 | Fax: 281-744-2201

Revision:

08/24/15
10/19/15

Engineer of Record:



PROGRESS DOCUMENTS
NOT FOR CONSTRUCTION

Drawn: TDD

Checked: TMH

Scale: AS NOTED

Key Plan:

Project Name:
LORING HOUSE

1125 Brighton Avenue
Portland, ME 04102

Sheet Name:

**Erosion & Sediment
Control Plan**

Project Number:

14165

Issue Date:

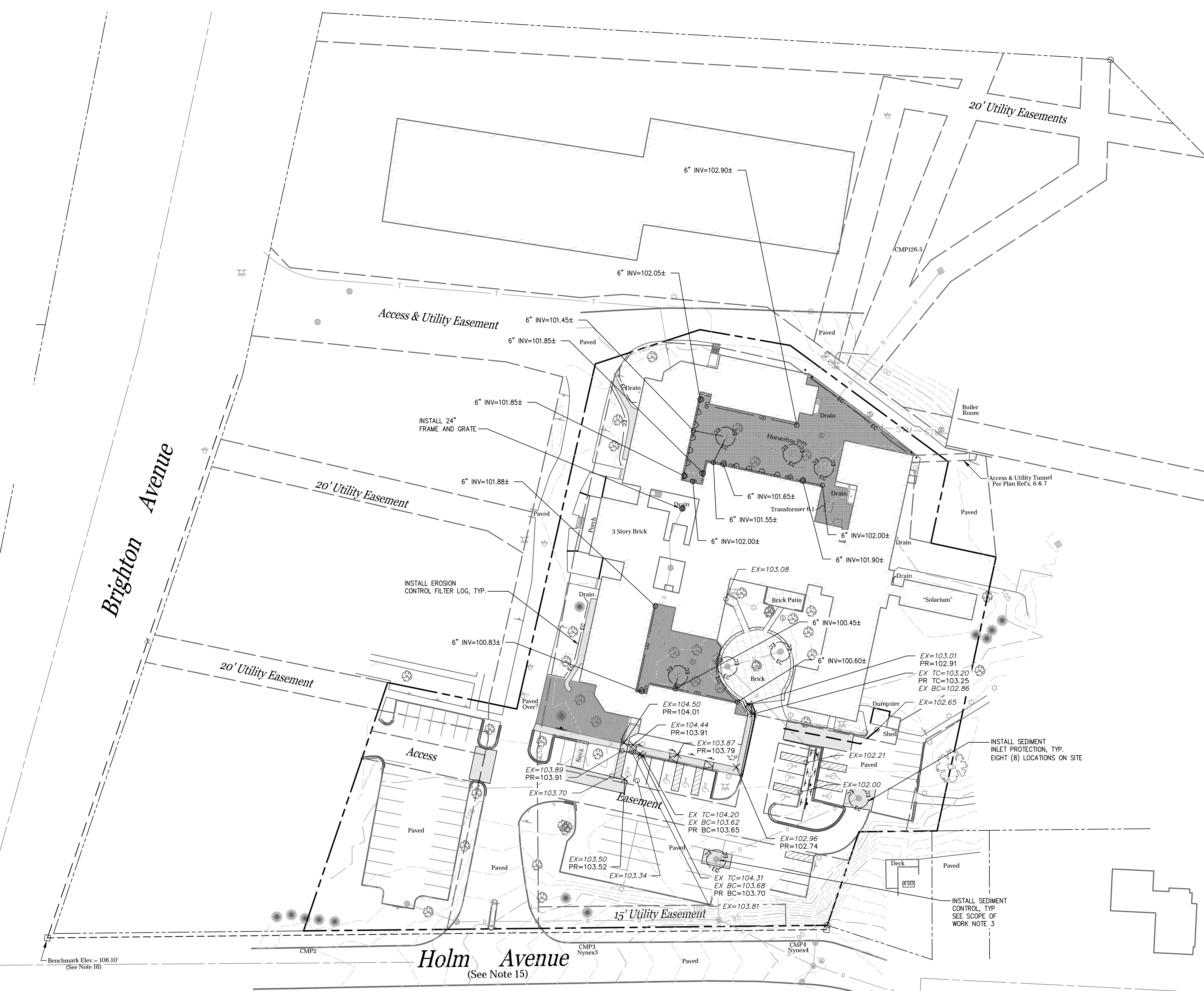
OCTOBER 19, 2015

Sheet Number:

C3.2

Legend:

- EXISTING**
- Found Monument
 - Found Iron Pipe
 - Catch Basin
 - Sanitary Manhole
 - Manhole
 - Fire Hydrant
 - Lamp Post
 - Utility Pole w/Guy Wire
 - Sign
 - Water Shutoff
 - Water Valve
 - 6" Bolland
 - Coniferous Tree
 - Deciduous Tree
 - Chainlink Fence
 - Approximate Boundary Line
 - Approximate Abutter's Line
 - Approximate Easement
 - 100' Major Contour
 - 102' Minor Contour
 - SD Storm Drain
 - Building
- PROPOSED**
- Asphalt Pavement/Sidewalk
 - Concrete Stairs/Walkway
 - Loam and Seed/Re-Grade
 - Storm Drain
 - Underdrain/Foundation Drain
 - Catch Basin
 - Window Well w/Drain Cover
 - Filter Log
 - Inlet Protection



- SCOPE OF WORK NOTES:**
- SEE EROSION CONTROL NOTES, SHEET 4.1.
 - PROTECT EXISTING TREES/VEGETATION THROUGHOUT SITE DURING CONSTRUCTION.
 - INSTALL CATCH BASIN SEDIMENT CONTROL DEVICES IN ALL EXISTING CATCH BASINS IN VICINITY OF CONSTRUCTION AREAS THROUGHOUT SITE FOR EROSION AND SEDIMENT CONTROL. SEE DETAIL SHEET 4.2.

