

Consultant:

Revision:

△ REVISION 1 - 10/19/2015

Architect of Record:



Drawn: SEA

Checked: PRR

Scale: 3/32" = 1'-0"

Key Plan:

Project Name:

LORING HOUSE

1125 Brighton Avenue
Portland, ME 04102

Sheet Name:

**Reflected Ceiling Plan
Second Floor**

Project Number:

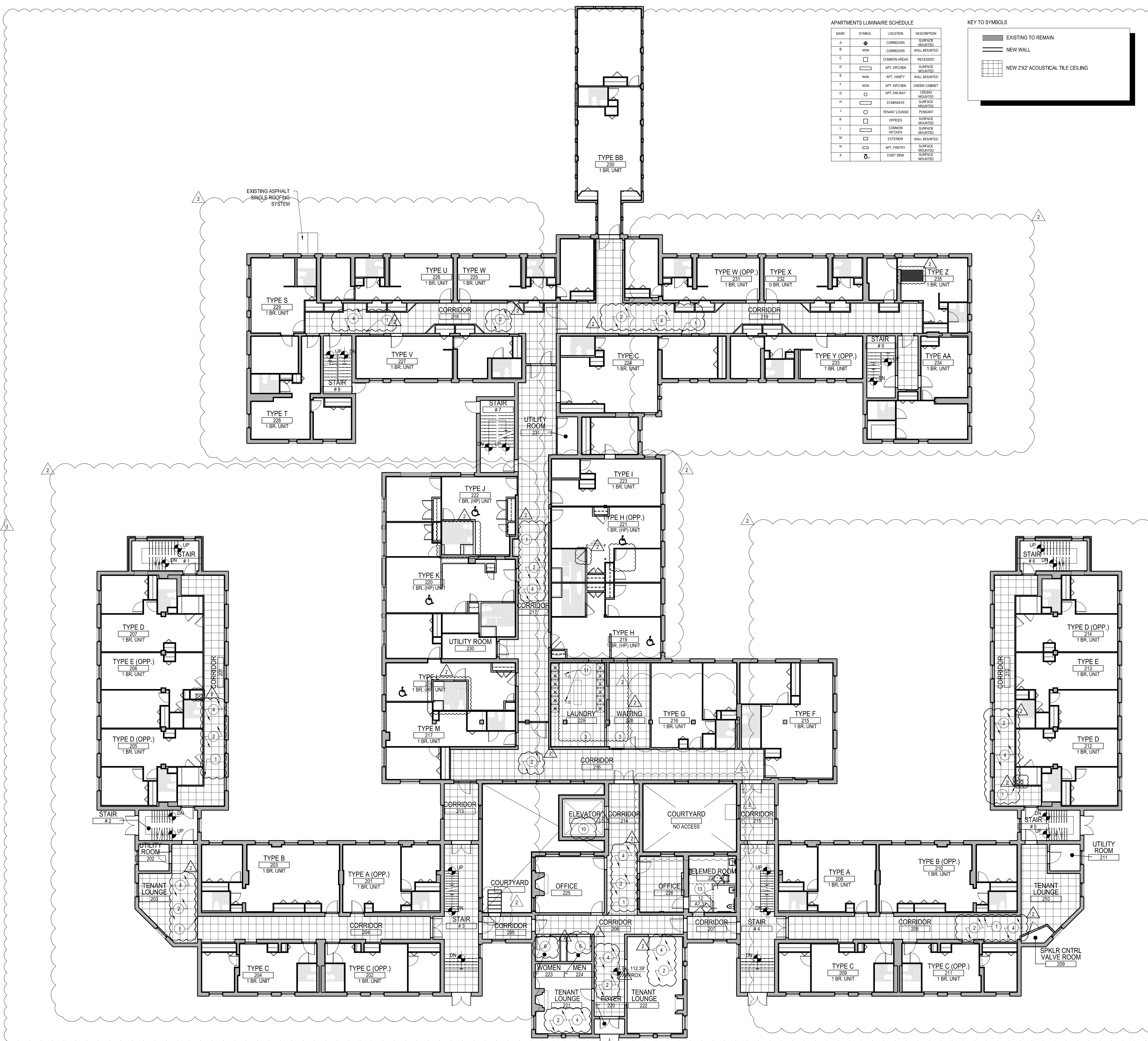
14165

Issue Date:

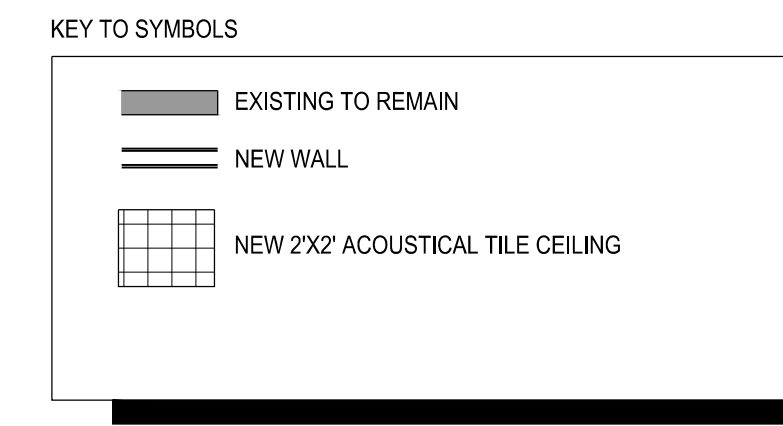
November 25, 2015

Sheet Number:

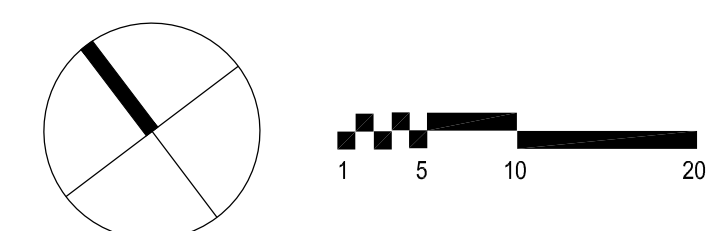
A8.02



MARK	SYMBOL	LOCATION	DESCRIPTION
A	⬆	CORRIDORS	SURFACE MOUNTED
B	⬆	CORRIDORS	WALL MOUNTED
C	□	COMMON AREAS	RECESSED
D	□	APT. KITCHEN	SURFACE MOUNTED
E	□	APT. VANITY	WALL MOUNTED
F	□	APT. KITCHEN	UNDER CABINET
G	○	APT. HALLWAY	CEILING MOUNTED
H	□	STAIRWAYS	SURFACE MOUNTED
J	○	TENANT LOUNGE	PENDANT
K	□	OFFICES	SURFACE MOUNTED
L	□	COMMON KITCHEN	SURFACE MOUNTED
M	□	EXTERIOR	WALL MOUNTED
N	□	APT. PANTRY	SURFACE MOUNTED
X	⬆	EXIST SIGN	SURFACE MOUNTED



1 LEVEL TWO FLOOR PLAN
SCALE: 3/32" = 1'-0"



△ SHEET ADDED TO SET