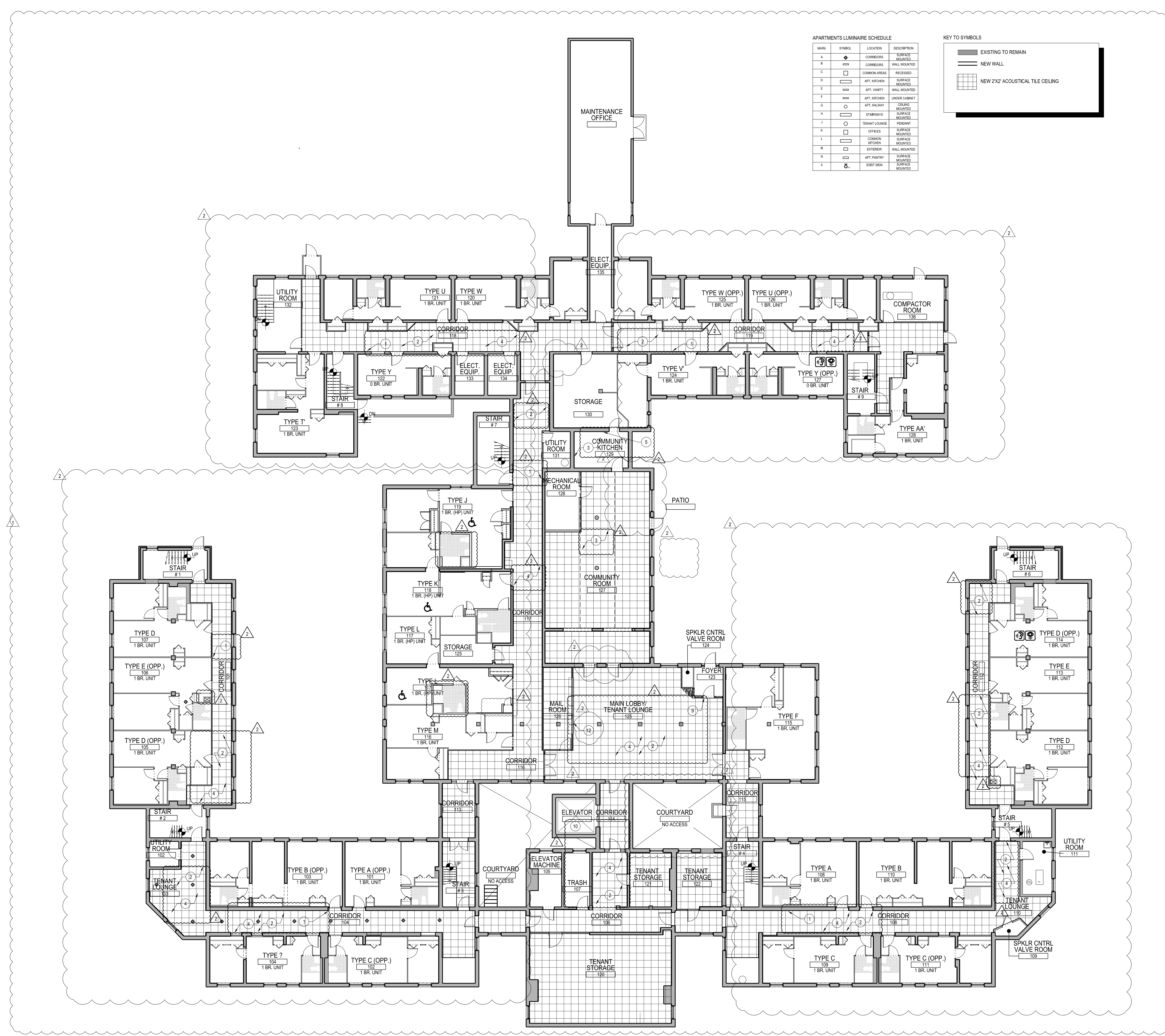
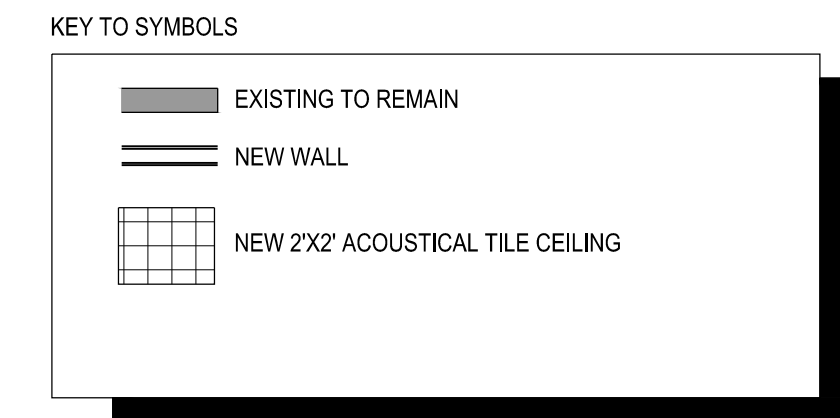


Wednesday, November 25, 2015 11:55:17 AM  
 P:\14165\_Loring House\Drawings\Working\CAD\Plot Files\A8.01-RCP FIRST FLOOR.dwg

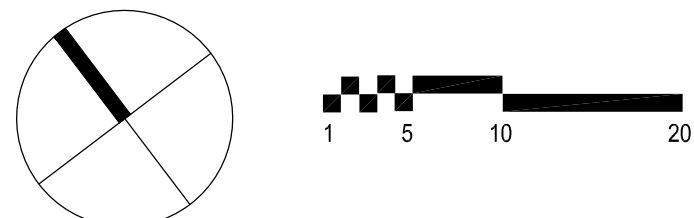


APARTMENTS LUMINAIRE SCHEDULE

MARK	SYMBOL	LOCATION	DESCRIPTION
A	⬤	CORRIDORS	SURFACE MOUNTED
B	⬤	CORRIDORS	WALL MOUNTED
C	□	COMMON AREAS	RECESSED
D	□	APT. KITCHEN	SURFACE MOUNTED
E	□	APT. VANITY	WALL MOUNTED
F	□	APT. KITCHEN	UNDER CABINET
G	○	APT. HALLWAY	CEILING MOUNTED
H	□	STAIRWAYS	SURFACE MOUNTED
J	○	TENANT LOUNGE	PENDANT
K	□	OFFICES	SURFACE MOUNTED
L	□	COMMON OFFICES	SURFACE MOUNTED
M	□	EXTERIOR	WALL MOUNTED
N	□	APT. PANTRY	SURFACE MOUNTED
X	⬤	EXIST BRN	SURFACE MOUNTED



1 LEVEL ONE FLOOR PLAN  
 SCALE: 3/32" = 1'-0"



▲ SHEET ADDED TO SET

**tat**  
 the architectural team

The Architectural Team, Inc.  
 50 Commandant's Way at Admiral's Hill  
 Chelsea MA 02150  
 T 617.889.4402  
 F 617.884.4329  
 www.architecturalteam.com  
 ©2011 The Architectural Team, Inc.

Consultant:

Revision:

▲ REVISION 1 - 10/19/2015

Architect of Record:



Drawn: AM

Checked: PRR

Scale: AS NOTED

Key Plan:

Project Name:

**LORING HOUSE**

1125 Brighton Avenue  
 Portland, ME 04102

Sheet Name:

**Reflected Ceiling Plan  
 First Floor**

Project Number:

14165

Issue Date:

November 25, 2015

Sheet Number:

**A8.01**