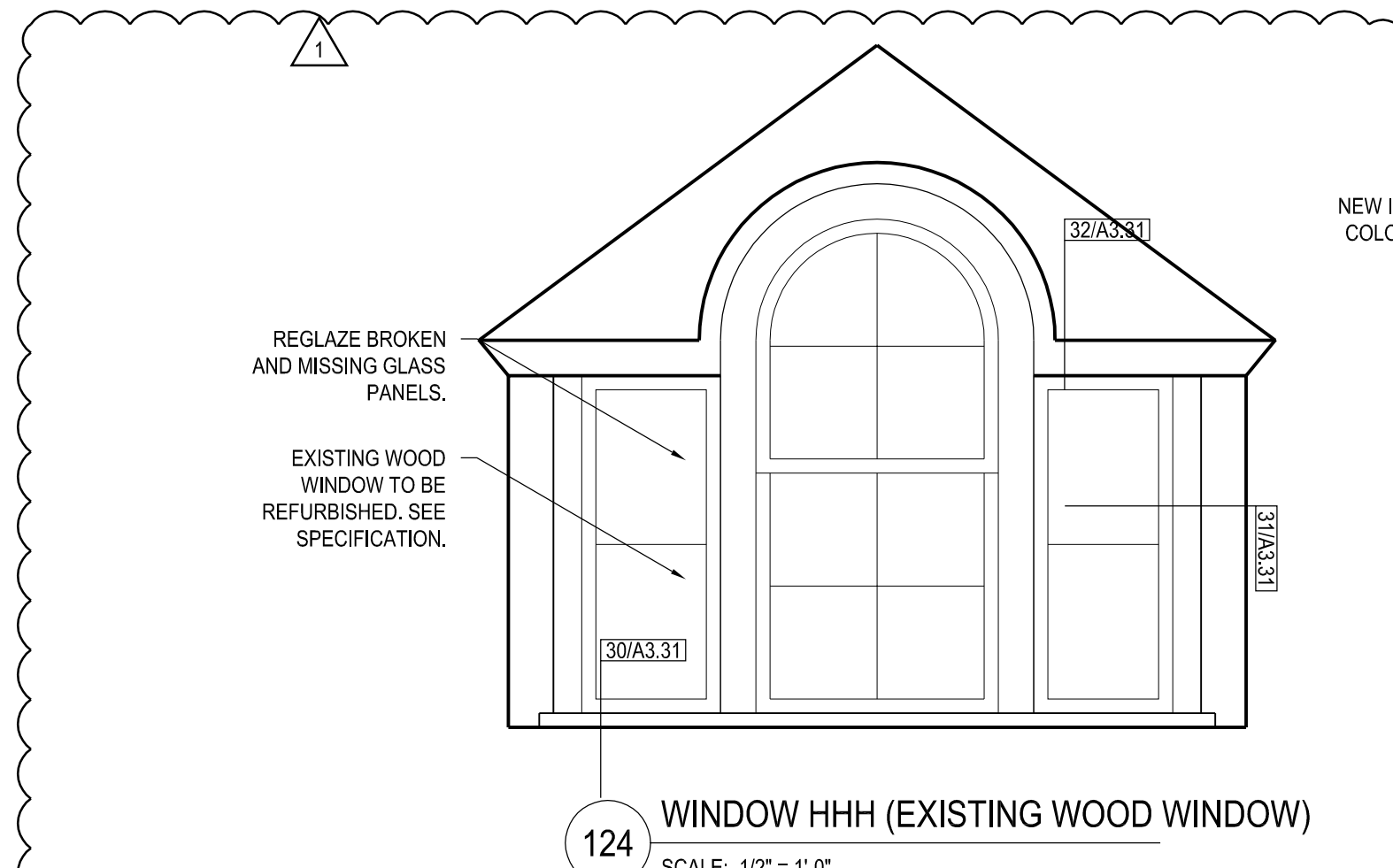
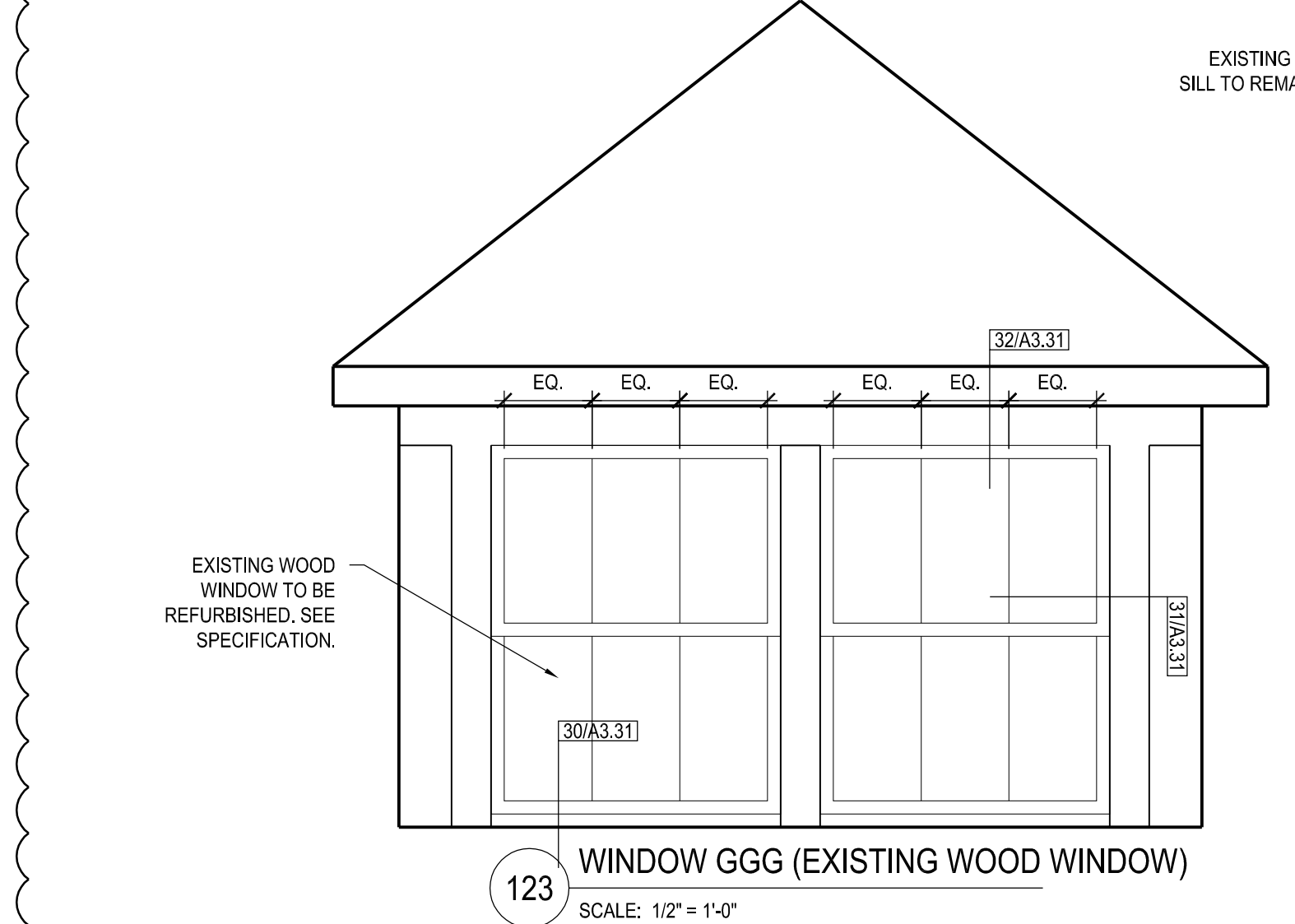


GENERAL NOTES

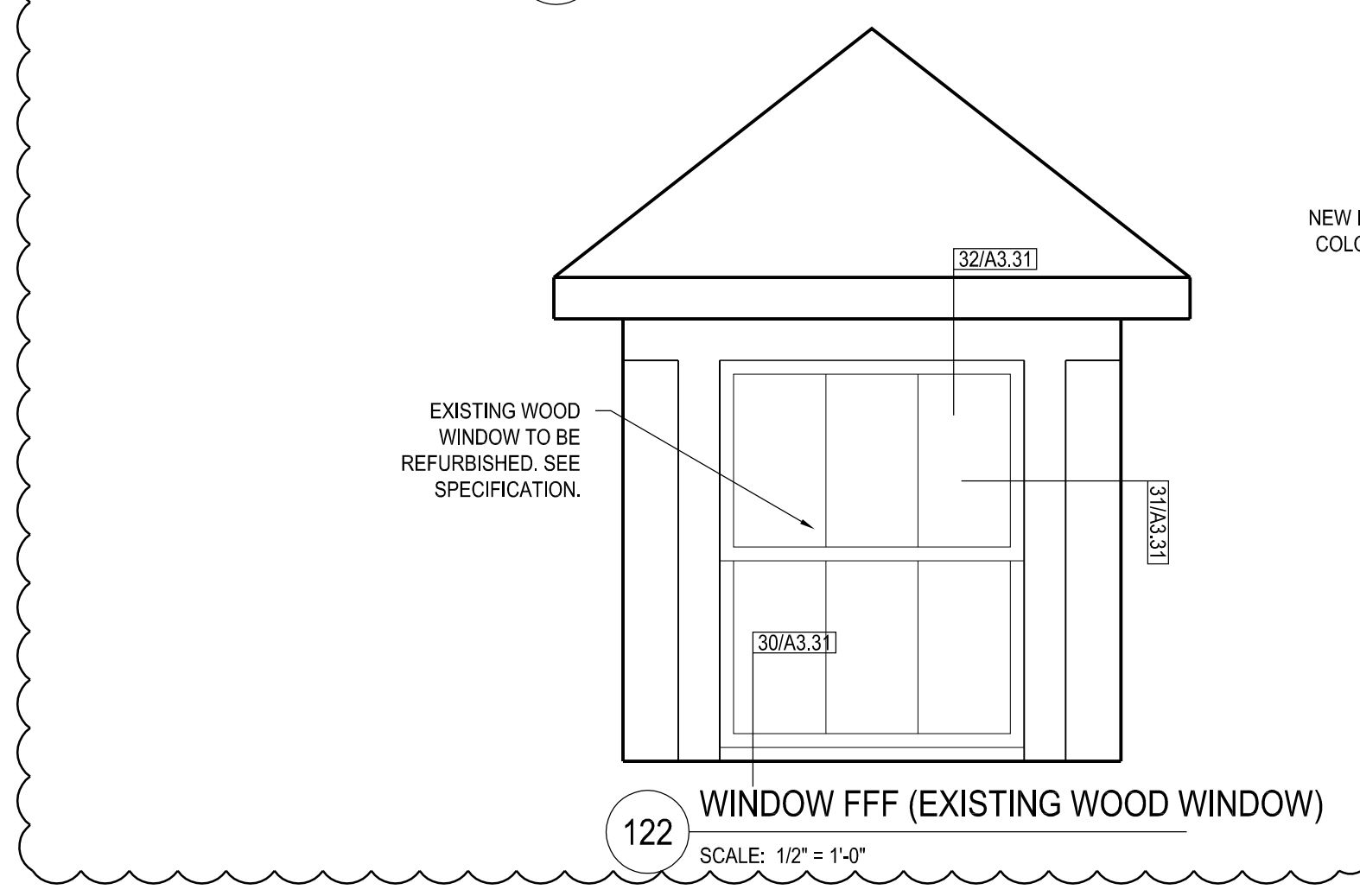
- DIMENSIONAL INFORMATION PROVIDED FOR CONVENIENCE ONLY. GENERAL CONTRACTOR IS RESPONSIBLE FOR VERIFICATION OF DIMENSIONS IN FIELD.
- REFER TO DRAWING A3.31 AND A3.32 FOR WINDOW DETAILS.
- WINDOW SHOP DRAWINGS ARE REQUIRED TO BE APPROVED BY THE NATIONAL PARKS SERVICE (NPS). DO NOT RELEASE WINDOWS FOR FABRICATION PRIOR TO RECEIPT OF NPS APPROVAL.
- PROVIDE MOCK UP INSTALLATION OF NEW WINDOW AND FLASHING FOR OWNER AND ARCHITECT REVIEW AND APPROVAL.
- INSULATE ALL VOIDS AROUND WINDOW OPENING WITH LOW EXPANSION FOAM INCLUDING VERY SMALL GAPS.



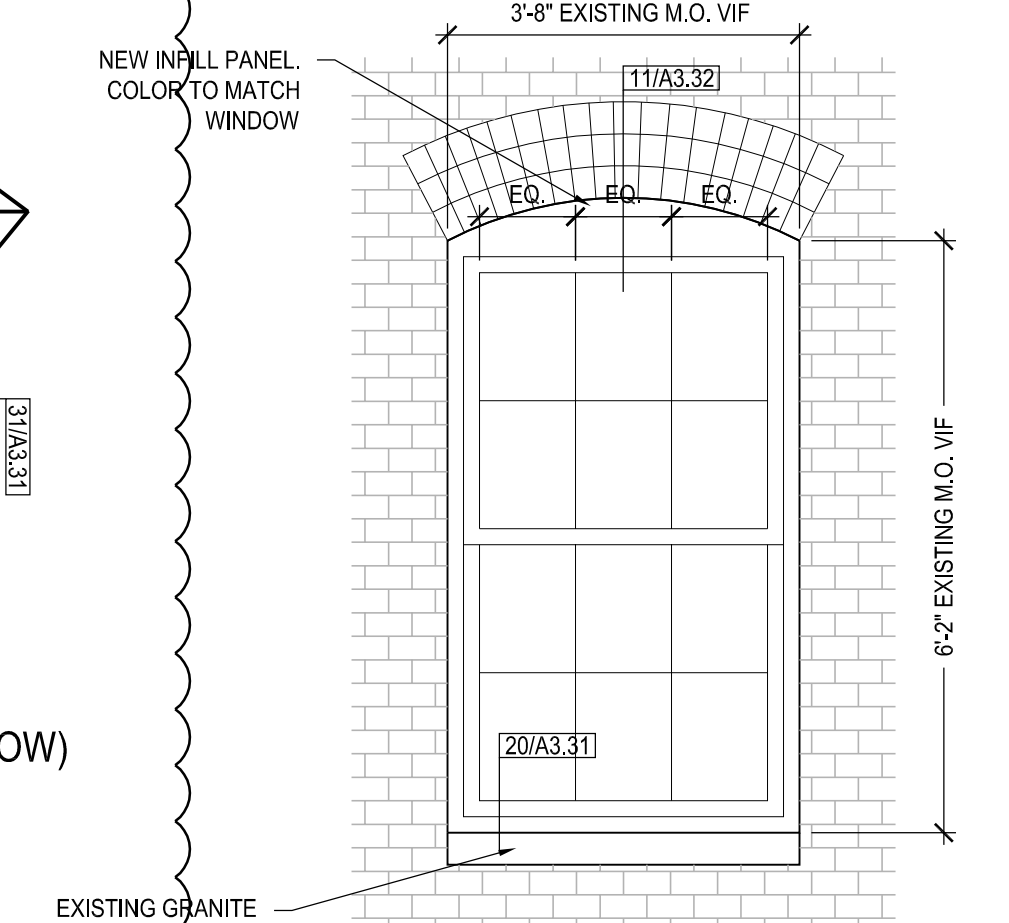
124 WINDOW HHH (EXISTING WOOD WINDOW)
 SCALE: 1/2" = 1'-0"



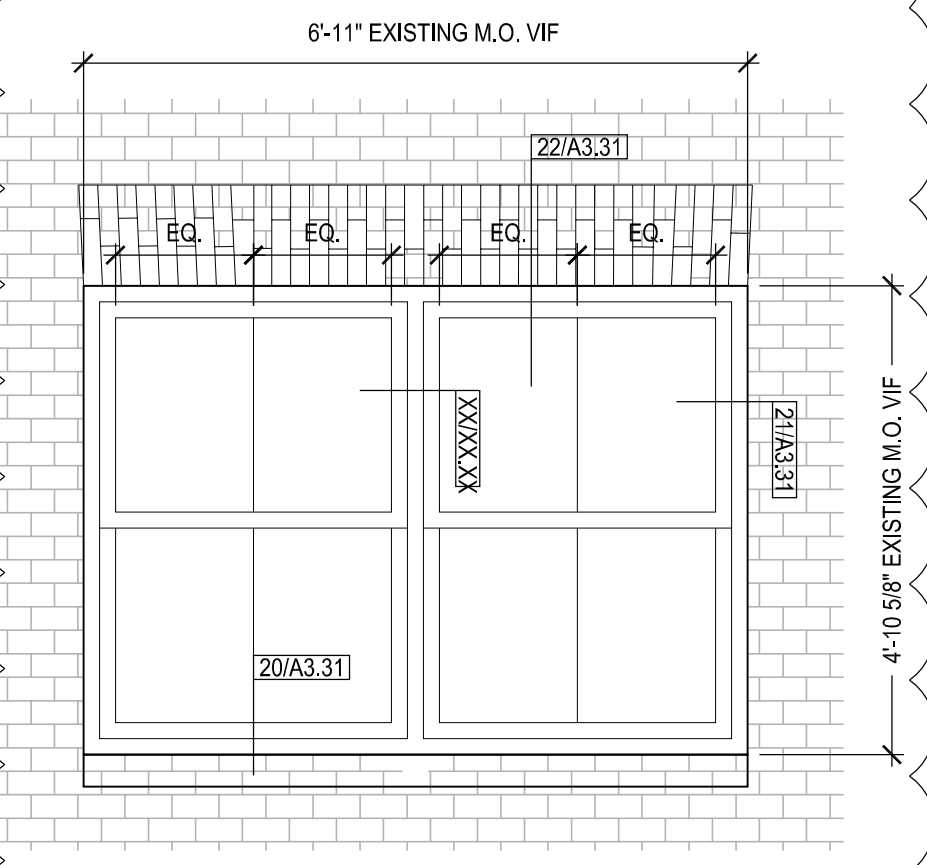
123 WINDOW GGG (EXISTING WOOD WINDOW)
 SCALE: 1/2" = 1'-0"



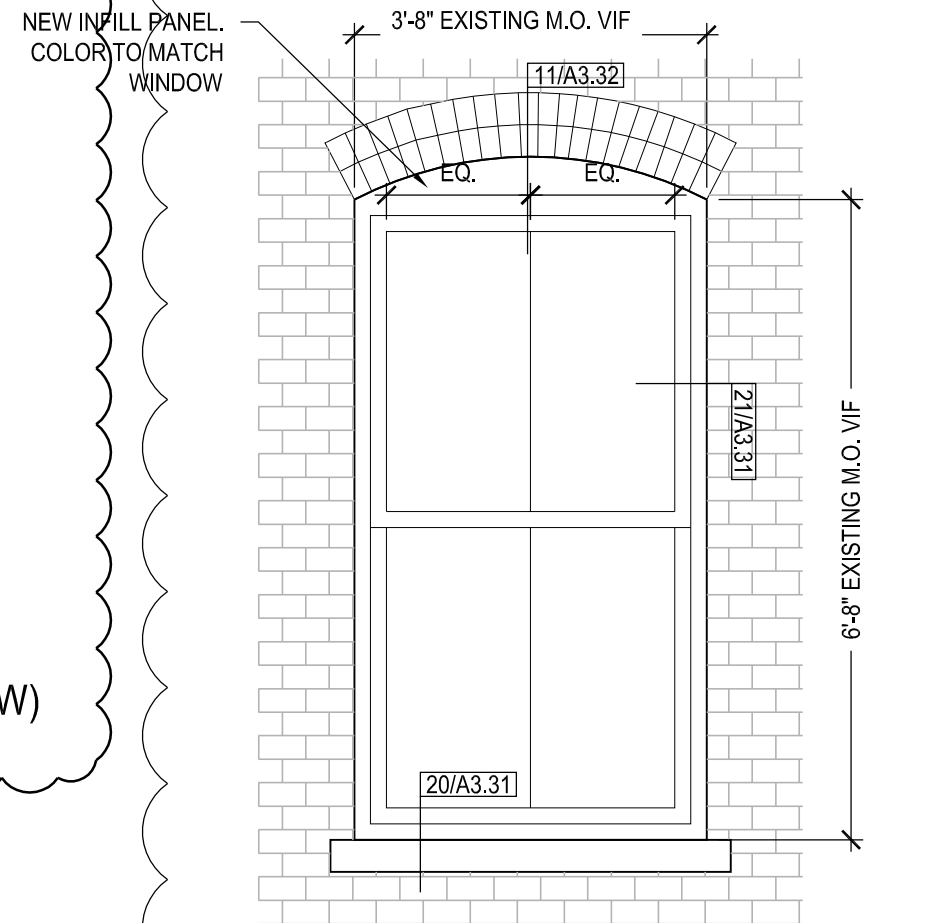
122 WINDOW FFF (EXISTING WOOD WINDOW)
 SCALE: 1/2" = 1'-0"



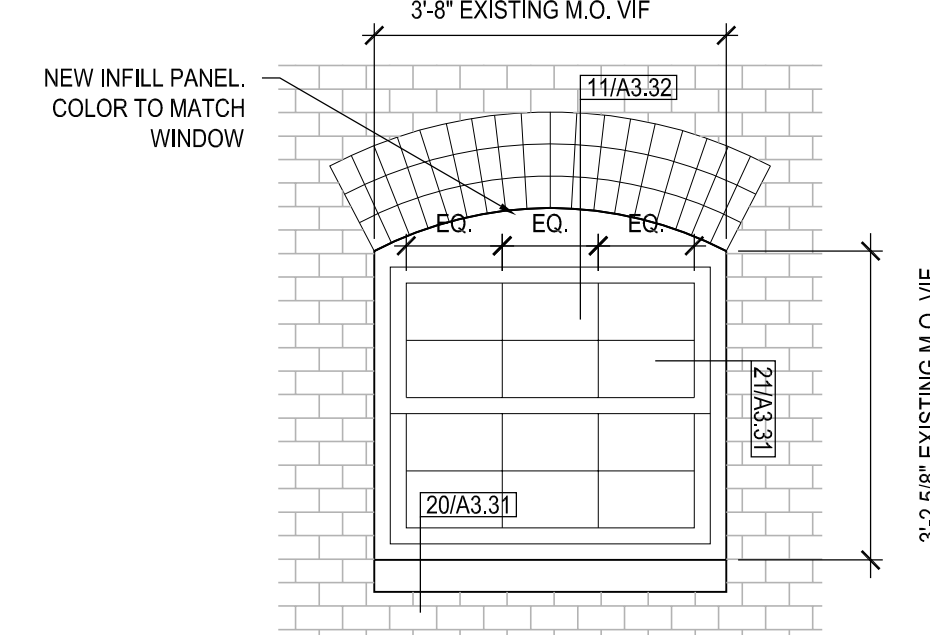
114 WINDOW CCC
 SCALE: 1/2" = 1'-0"



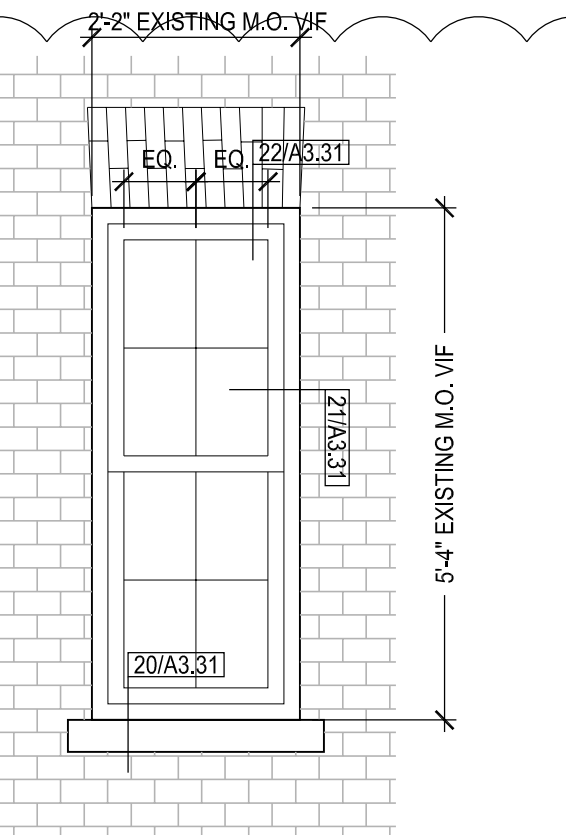
113 WINDOW BBB
 SCALE: 1/2" = 1'-0"



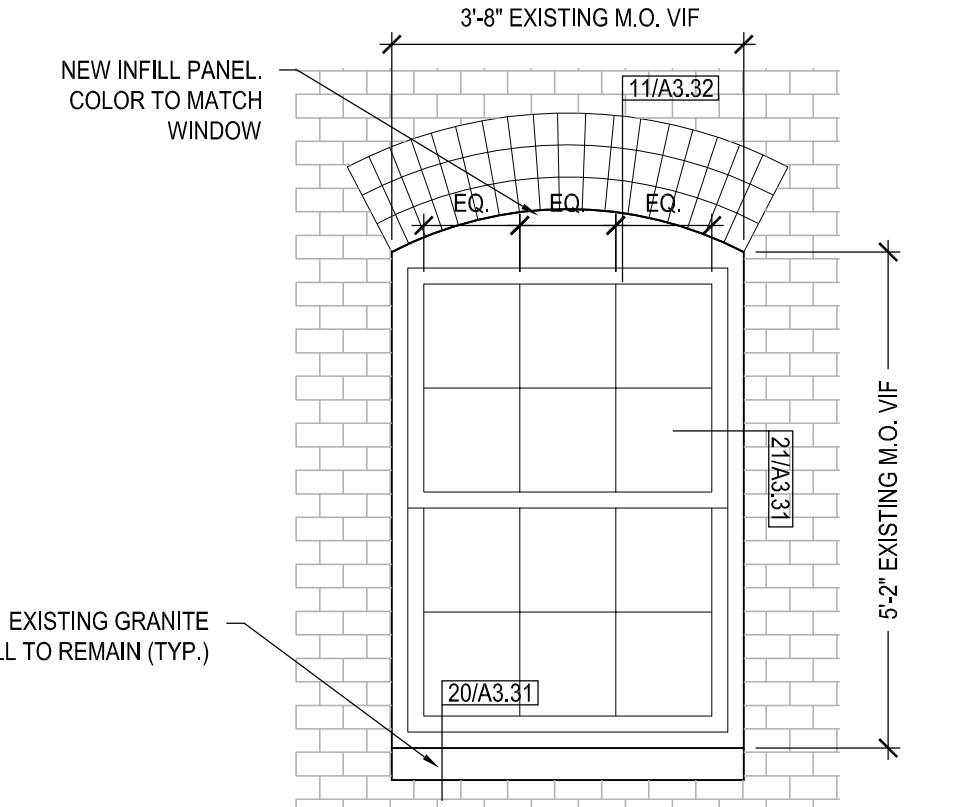
112 WINDOW AAA
 SCALE: 1/2" = 1'-0"



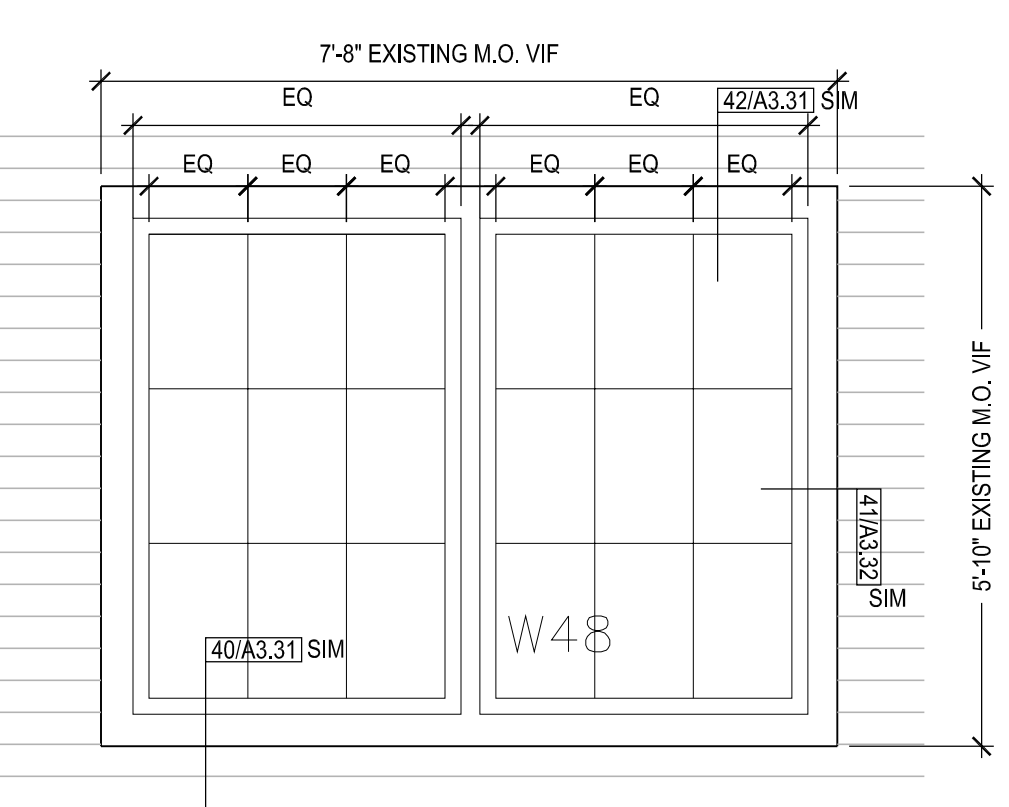
111 WINDOW ZZ
 SCALE: 1/2" = 1'-0"



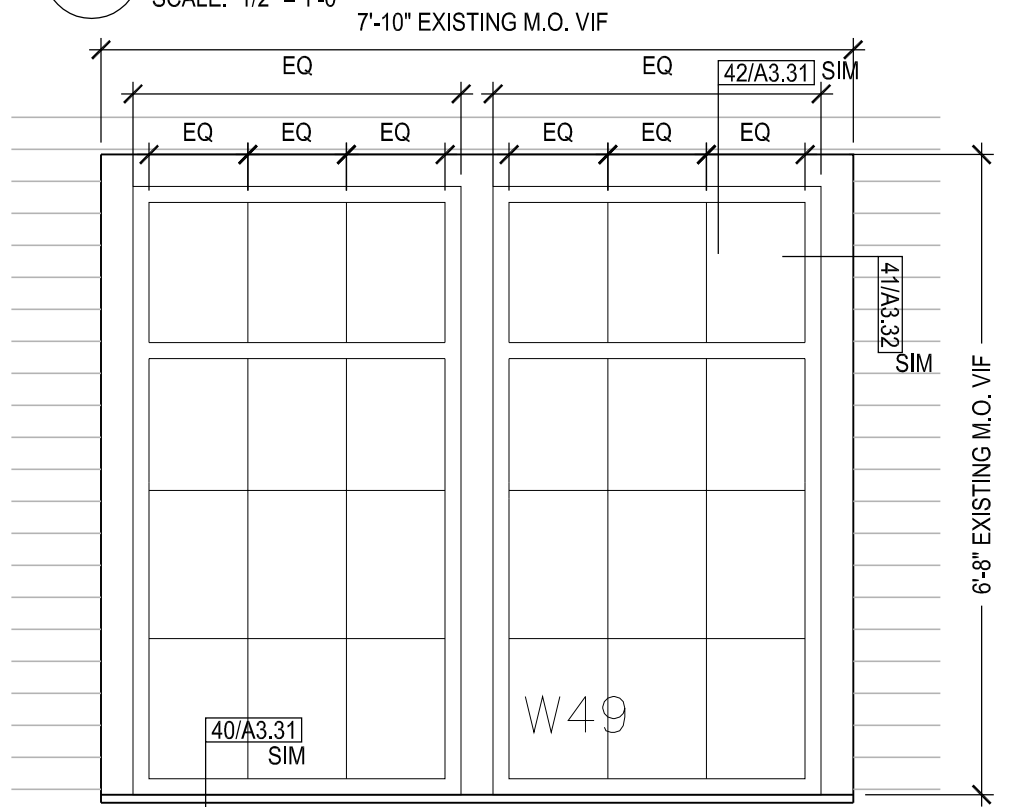
121 WINDOW EEE
 SCALE: 1/2" = 1'-0"



120 WINDOW DDD
 SCALE: 1/2" = 1'-0"

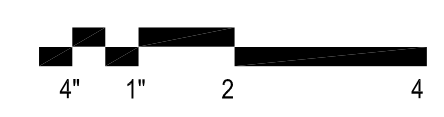


131 WINDOW KKK
 SCALE: 1/2" = 1'-0"



130 WINDOW JJJ
 SCALE: 1/2" = 1'-0"

2



The Architectural Team, Inc.
 50 Commandant's Way at Admiral's Hill
 Chelsea MA 02150
 T 617.889.4402
 F 617.884.4329
 www.architecturalteam.com
 ©2011 The Architectural Team, Inc.

Consultant:

Revision:

1 ADDENDUM 1 2015.10.19
 2 REVISION 1 2015.11.25

Architect of Record:



Drawn: SEA
 Checked: PRR
 Scale: AS NOTED
 Key Plan:

Project Name:
LORING HOUSE

1125 Brighton Avenue
 Portland, ME 04102

Sheet Name:
WINDOW ELEVATIONS

Project Number:
 14165
 Issue Date:
 November 25, 2015

Sheet Number:
A3.23