

**GENERAL NOTES:**

- DRAWINGS INDICATE GENERAL AND TYPICAL DETAILS OF CONNECTIONS. CONTRACTOR SHALL VERIFY DIMENSIONS AND CONDITIONS IN THE FIELD AND REPORT DISCREPANCIES TO THE ENGINEER PRIOR TO COMMENCEMENT OF CONSTRUCTION. DIMENSIONS ENCOUNTERED IN THE FIELD CONTRARY TO THOSE SHOWN ON THE DRAWINGS, THE CONTRACTOR SHALL NOTIFY THE ENGINEER PRIOR TO COMMENCEMENT OF CONSTRUCTION. DIMENSIONS SHOWN ON THE DRAWINGS ARE TYPICAL UNLESS NOTED OTHERWISE. (U.N.O.)
- DRAWINGS REPRESENT A STABLE STRUCTURE. IN THE EVENT OF SETTLEMENT OR OTHER MEANS OF OBTAINING THIS CONDITION IS THE RESPONSIBILITY OF THE CONTRACTOR.
- DIMENSIONS AND ELEVATIONS ARE APPROXIMATE. CONTRACTOR TO VERIFY DIMENSIONS PRIOR TO FABRICATION.
- MEMBERS SHOWN ARE EXISTING UNLESS CHECKED "NEW".

**STRUCTURAL STEEL NOTES:**

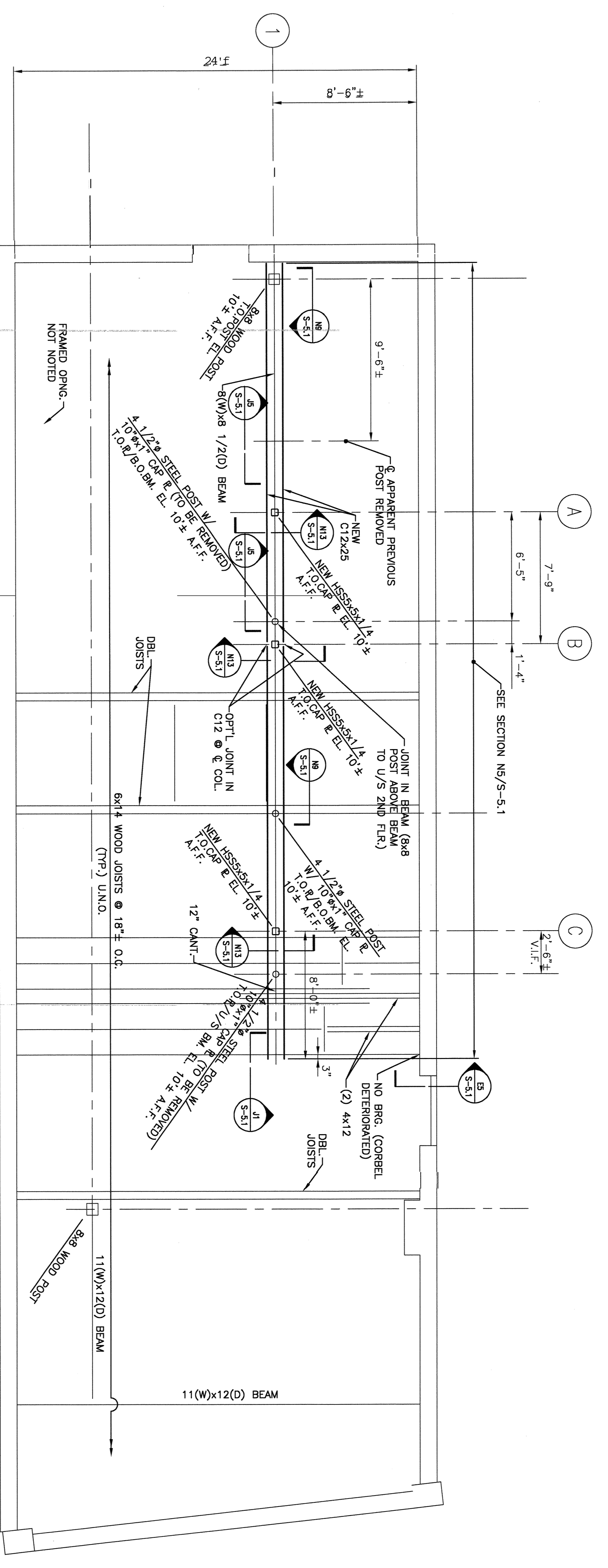
- STEEL FABRICATION AND ERECTION SHALL CONFORM TO AISC 360 - 10 (LATEST EDITION) AND AISC 358 - 10 (LATEST EDITION) FOR CONNECTIONS OF STRUCTURAL STEEL.
- PLATES AND CHANNELS - ASTM A36.
- HOLLOW STRUCTURAL SECTIONS (HSS) - ASTM A500, GRADE B, F<sub>y</sub>=46 ksi.
- WELDING SHALL CONFORM TO AWS D1.1 (LATEST EDITION) AND PERFORMED BY CERTIFIED WELDERS QUALIFIED BY AWS. ELECTRODES SHALL BE LOW HYDROGEN WITH MATCHING WELD METAL.
- IN BASEMENT PAINT STEEL WITH TWO COATS OF RUST PREVENTIVE PAINT IN ACCORDANCE WITH MANUFACTURER'S RECOMMENDATIONS.

**CONCRETE NOTES:**

- CONCRETE WORK SHALL CONFORM TO ACI 318 AND ACI 301 (LATEST EDITIONS).
- MIN. UP COMPRESSIVE STRENGTH SHALL BE 3000 psi @ 28 DAY.

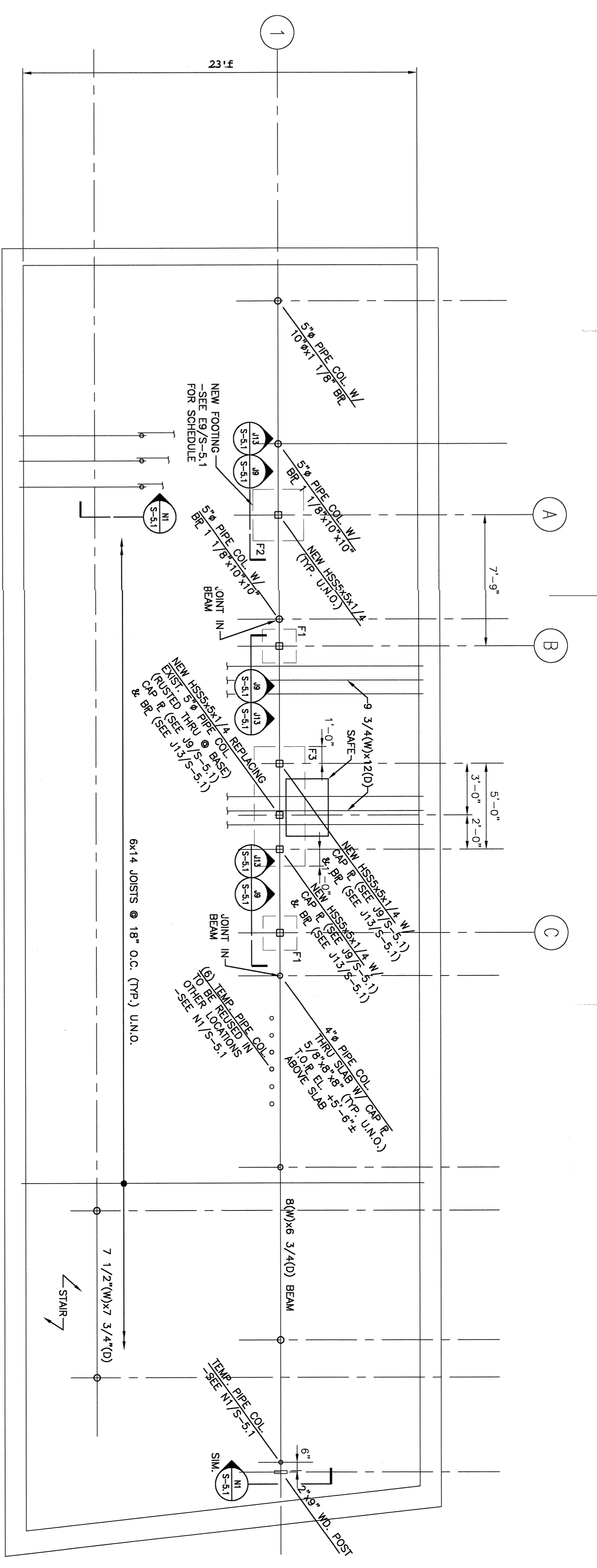
**SHIM NOTES:**

- IF USED BETWEEN WOOD AND STEEL, USE HARDWOOD SHIMS FOR FULL AREA OF STEEL.
- IF USED BETWEEN STEEL AND CONC OR STEEL AND STEEL, USE STEEL SHIMS FOR FULL AREA.



Scale: 1/4"=1'-0"

**J1 SECOND FLOOR FRAMING PLAN**



Scale: 1/4"=1'-0"

**O1 FIRST FLOOR FRAMING PLAN**

**VOCOM DESIGN INC.**  
2650 Prosper Ave.  
Cleveland, Ohio 44115  
216 623-9400 P.  
216 623-9410 F.  
vocominc.com

**SM RT**  
SPECIALTY METAL FABRICATORS  
2450 Prosper Ave. 4th Fl. 216-623-9400  
Cleveland, Ohio 44115 216-623-0410

**KeyBank**  
Type III Branch  
Proposed New Construction  
85 Commercial  
Street-Long Ward  
Portland, ME

**REVISIONS**

No.	Description	By	Date

Drawn by: TCM  
Checked by: JFN  
Job Number: 03095 00  
DWG Construction Phase Documents  
Sheet Title:  
First and Second Floor Framing Plans  
Sheet Number:  
**S-11**  
Original Date: 9-5-03