

KeyCorp

KeyCenter  
85 Commercial Street  
Portland, ME 04101

MDF/E TO  
Room Detail

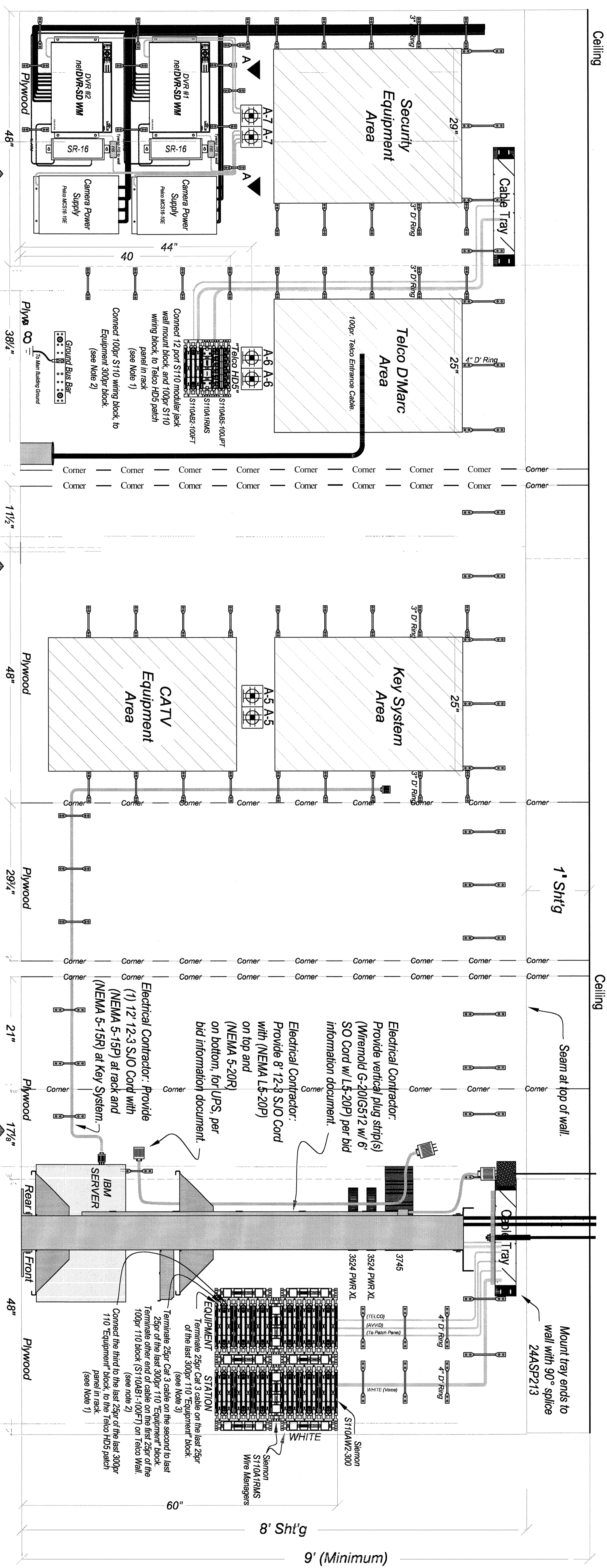
KeyCenter  
85 Commercial Street  
Portland, ME 04101

Designer By:



RJC Consulting  
Data Communications System Design  
Project Management  
2024 Main Street, Suite 201  
Bangor, ME 04410  
RJC@rjcconsulting.com

Notes:  
- See Views 100 and 101 for placement of wall-mounted power.  
- All requirements specified for the LAN Room on this drawing takes precedence over general contractors drawing, if conflicting.  
- See RTU schedule for specific cooling requirements.  
- D-1A Note 1:  
Connect the 110 Modular Jack Wall Mount Block (S110A85-100D7) on the Telco Wall to ports 1-12 on the 24 port patch panel - HD5-24 (598A) in row 1 rack 2 with 12 Cat 5e cables (Mnl#1598A).  
- Connect the second 25p of the 100p/110 block (S110A81-100D7) on Telco Wall to ports 13-18 on the same 24 Port patch panel with 6 Cat 5e cables (Mnl#1598A).  
- Connect the third to the last 25p of the last 300p/110 Equipment block, to ports 19-24 on the same 24 port patch panel with 6 Cat 5e cables (Mnl#1598A).  
- D-1A Note 2: Terminate a 25p Cat 3 cable on the second to last 25p of the last 300p/110 Equipment block (S110A81-100D7) on Telco Wall to port 1 in row 1 rack 2 with 12 Cat 5e cables (Mnl#1598A).  
- D-1A Note 3: Terminate a 25p Cat 3 cable on the last 25p of the last 300p/110 Equipment block. Terminate other end of cable with 180° (Strength) male 50 amp connector and terminate at 3745 outlet in row 1 rack 1. (Right/Left 90° angle connector will not fit equipment).  
- D-1A Note 4: Sensors, Rotulas, Simbios, and Pismo System provided by KeyBank. Questions pertaining to this drawing, please contact: Key Bank, David L. D'ordi, Onyx (216) 959-9792 • Pager (869) 701-2942

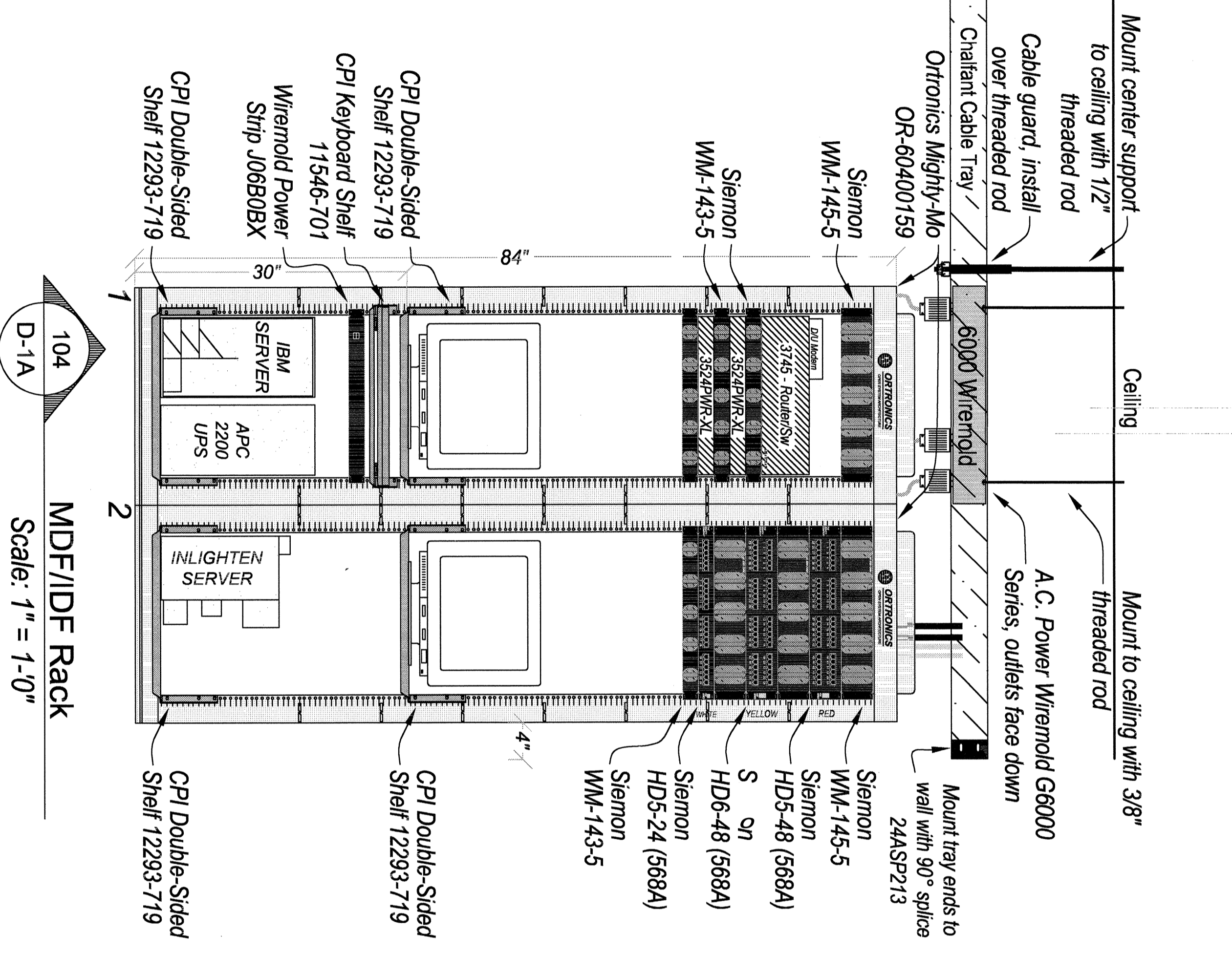
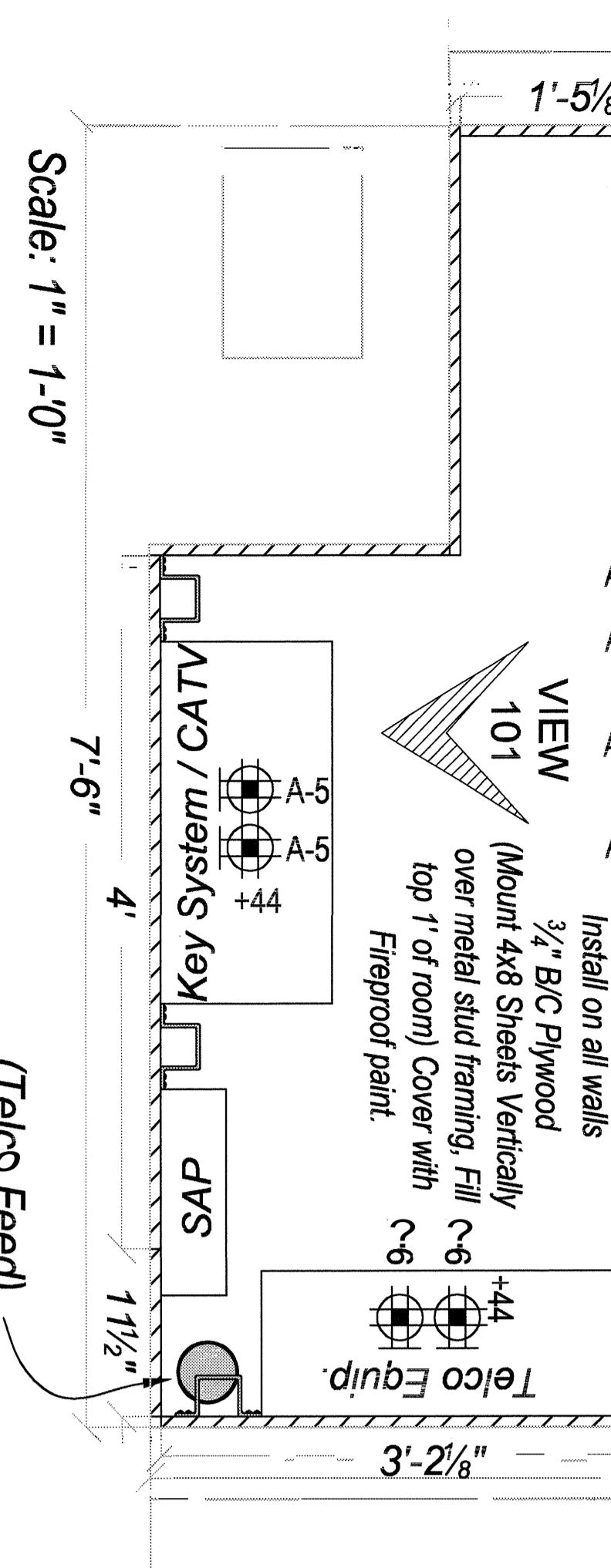
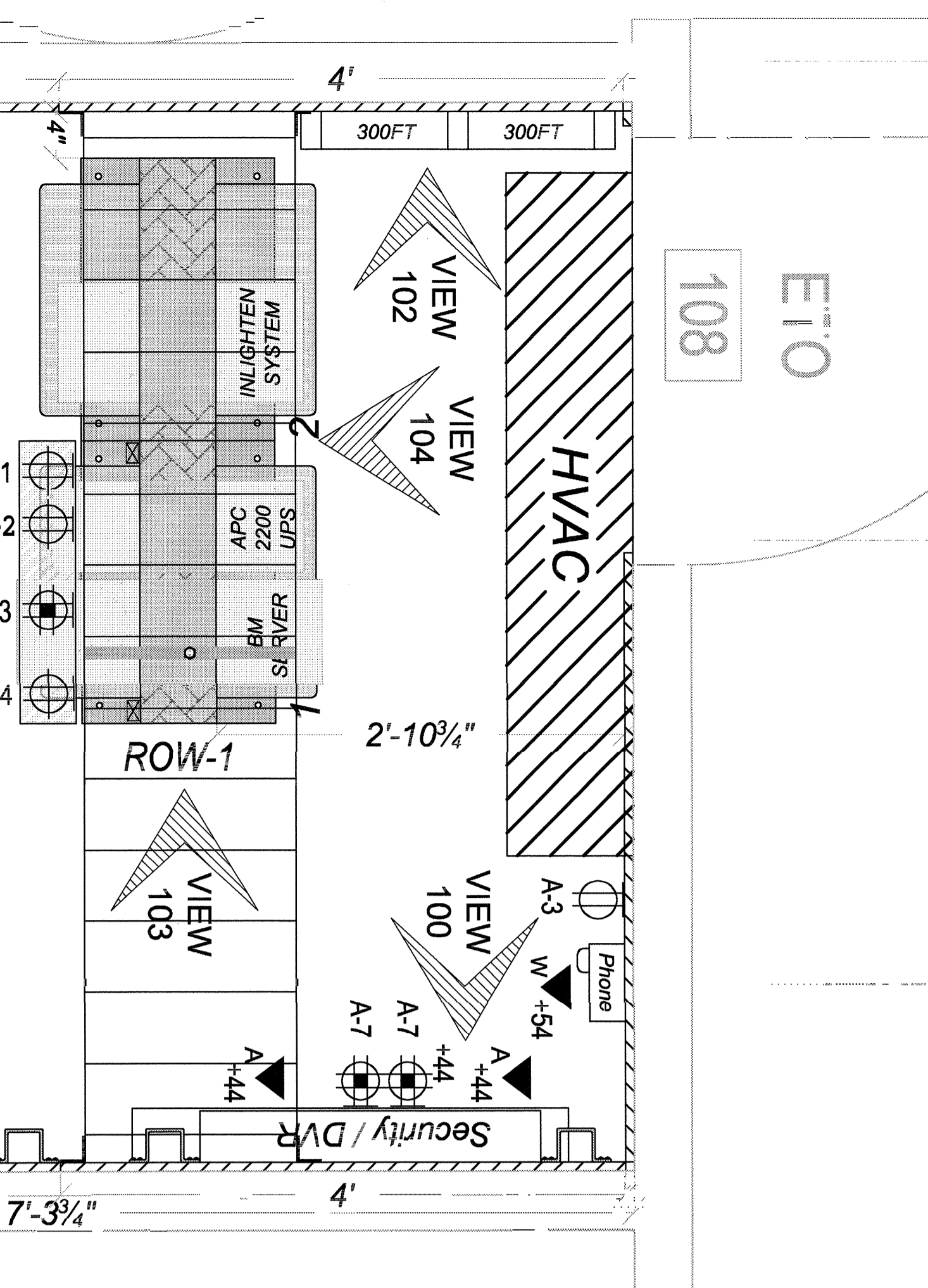


100 MDF Wall Elevation  
Scale: 1" = 1'-0"

101 MDF Wall Elevation  
Scale: 1" = 1'-0"

103 MDF Side Elevation  
Scale: 1" = 1'-0"

Specifications  
Note: Any deviation from this standard will be noted specifically on this drawing.  
Notes in this drawing take precedence over this standard for this drawing only.  
Note: All circuits to be isolated w/ 3rd wire isolated/insulated ground.  
Note: All A/C power strips mounted in cabinets and on racks need to be converted to (NEMA LS-20P) Plugs on end of signal.  
Note: All A/C outlets denote panel and circuit numbers:  
(e.g. C-34) (Panel A-Circuit # 34)  
Note: All A/C outlets to be labeled with permanent laminated adhesive labels, depicting panel and circuit number identifier. i.e. C-34  
Note: All wall outlets to be mounted 18" A.F.F. or in existing rough-in unless noted otherwise.  
Note: All electrical outlets to be mounted per manufacturer's recommendation.  
Note: 5 port isolated power strip (Wrennold G-20GS12 w/ 6 SO Cord w/ LS-20P) Plugload 2000 Series www.wrennold.com/catalog/IED-1025.pdf  
Note: 115 VAC, 20 AMP Standard (NEMA 5-20R) (G)  
Note: 115 VAC, 20 AMP Quad Receptacle (Two-NEMA 5-20R) (G)  
Note: 115 VAC, 20 AMP Standard (NEMA 5-20R) (G)  
Note: 115 VAC, 20 AMP Quad Receptacle (Two-NEMA 5-20R) (G)  
Note: 1 LAN Cat 5e <R&ED> / 1 Misc. Data Cat 5e <YELLOW>  
Note: 1 LAN Cat 5e <R&ED> / 1 Misc. Data Cat 5e <YELLOW>  
Note: 1 LAN Cat 5e <R&ED> / 1 Misc. Data Cat 5e <YELLOW>  
Note: 1 LAN Cat 5e <R&ED> / 1 Misc. Data Cat 5e <YELLOW>  
Note: 1 LAN Cat 5e <R&ED> / 1 Misc. Data Cat 5e <YELLOW>  
Note: 1 R&GU C&ak for CATV (Home Run to CATV backboard in MDF/E TO room)  
Note: 1 R&GU C&ak for Inlighten System (Home Run to Inlighten Server in MDF/E TO room)



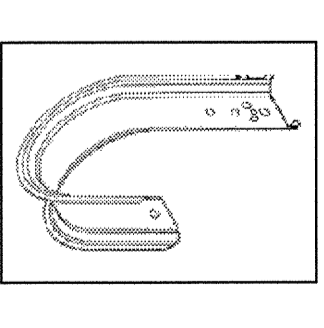
Scale: 1" = 1'-0"

Scale: 1" = 1'-0"

NOTE: THIS PLAN IS FOR REFERENCE ONLY!  
FINAL CABLING PLAN WILL BE ISSUED BY RJC.

NOTE: CABLE VENDOR IS RESPONSIBLE TO PROVIDE & INSTALL ALL CABLING FOR THE E TO ROOM & DIEBOLD SECURITY SYSTEM. REFER TO DIEBOLD CABLING SPECIFICATION DWG FOR LOCATION, TYPE, & MFG.

NOTE: VERTICAL PLUG STRIPS AND EXTENSION CORDS TO BE PROVIDED BY ELECTRICAL CONTRACTOR. LENGTH DEPICTED ON PRINT D-1A.



- Cable Tray Specifications (inside equipment room only)  
Chalfant, or equivalent (aluminum) (no solid bottom)  
Install per manufacturer specifications.  
Chalfant Part # (www.ChalfantCableTray.com)  
24A18010-06 - Straight 18" wide 4" deep (Aluminum) 15" (ring spacing)  
24AS213 - Misc. Splices (90 Deg)  
9S1 0263 - Center Support Kit (Lx = Length 12", 24", 36", 48", 72", 120")  
- Hanging Rods 1/2" (Lx = Length 12", 24", 36", 48", 72", 120")  
9SXK312 (example - 24" = 9SX4312, 120" = 9S120312)

- J-Hook Specifications (cable pathway outside equipment room)  
CADDY or equivalent  
Install per manufacturer specifications  
CADDY Series # (www.erico.com)  
Series Maximum Cable Count  
CAT12 16 UTP cables  
CAT17 50 UTP cables  
CAT171 80 UTP cables  
CAT132 300 UTP cables  
CAT74 300 UTP cables  
CAT1425 425 UTP cables w/ 4" loop  
CAT1425 425 UTP cables w/ 6" loop

DATE: 8/15/03  
LAST DATE REVIS: 8/28/03  
SPREADSHEET: N/A  
PREPARED BY: R. CASWITS  
SCALE: AS NOTED  
DRAWING NAME: 85 Commercial Street-D1A-MG

This document and its electronic version is provided under copyright laws of the USA and other countries as an integral part of the design and/or construction process for the project. It is not to be distributed, copied, or reproduced in any form or by any means without the written permission of RJC Consulting. All other drawings and/or specifications are the property of RJC Consulting. Please refer to the drawings and specifications for any information. Some drawings and specifications are copyright RJC Consulting. (Copyrighted) or Registered.