

KE BANK

PORTLAND, MAINE

PROJECT LOCATION

GENERAL INFORMATION

DEBOLD SILES REPRESENTATIVE... DEBOLD ARCHITECTURAL & ENGINEERING SERVICES REPRESENTATIVE

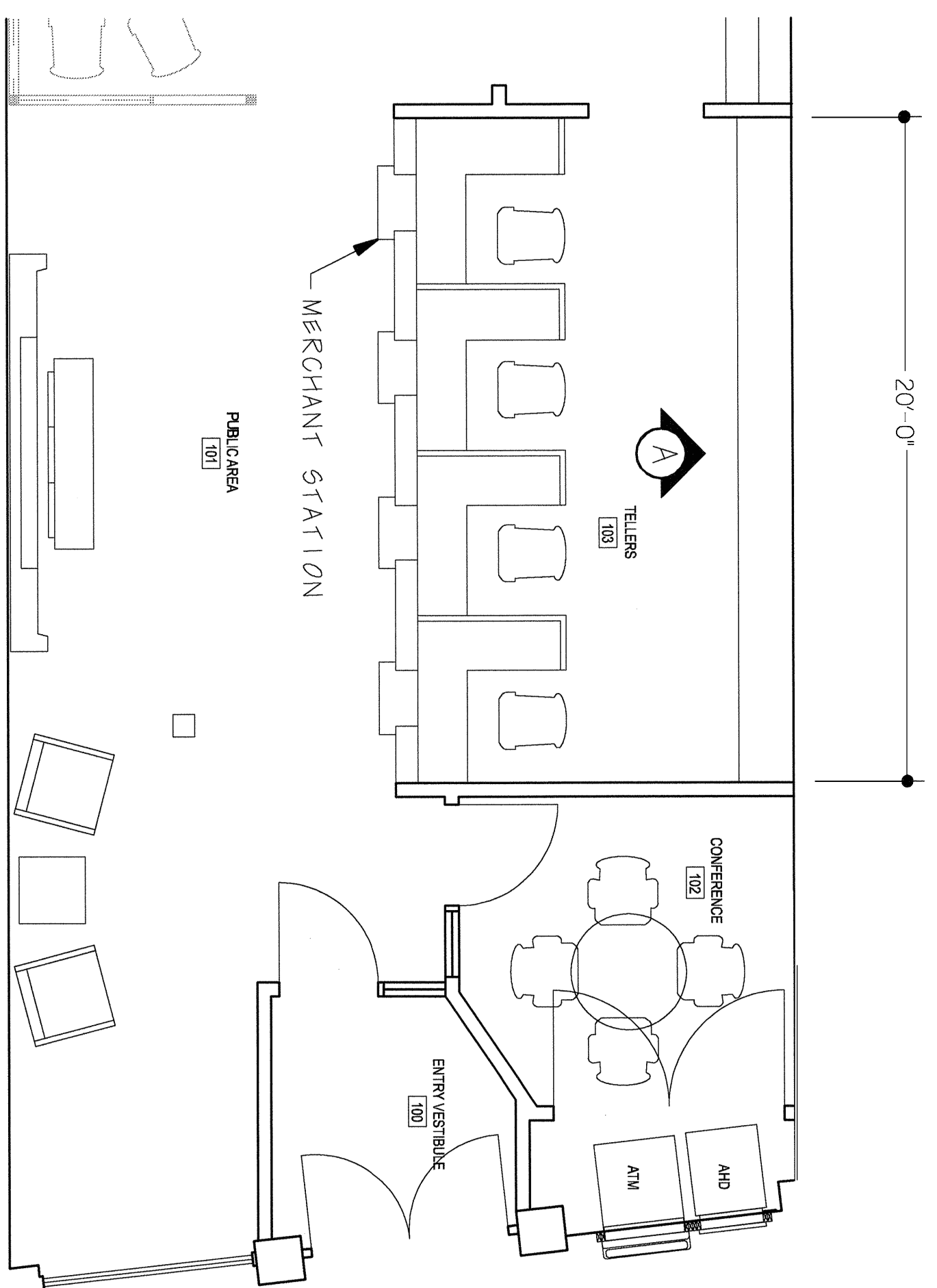
KEY PROJECT DATES

Table with columns: START DATE, INSTALLATION SCHEDULE DATES, COMPLETION DATE, DEBOLD PRODUCT

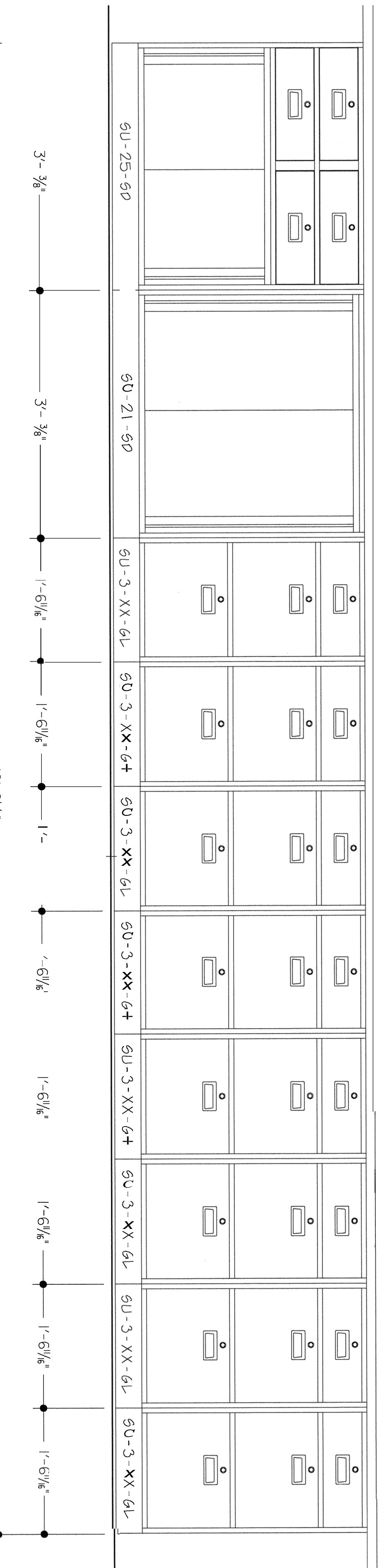
- 1. 2 WEEKS ADVANCE NOTICE IS REQUIRED FOR SCHEDULING THE INSTALLATION... 2. FIRE AND EASY ACCESS TO AND FROM AREAS WHERE EQUIPMENT IS TO BE INSTALLED SHALL BE PROVIDED BY THE GENERAL CONTRACTOR.

NOTES:

- 1. FINISH: BLACK
2. KEYING: ALL LOCKS PER TELLER STATION KEYPED DIFFERENT.
3. ALL BASES 4" HIGH AND ADJUST FROM 0" TO 1/4"



KEY PLAN SCALE: 1/4" = 1'-0"

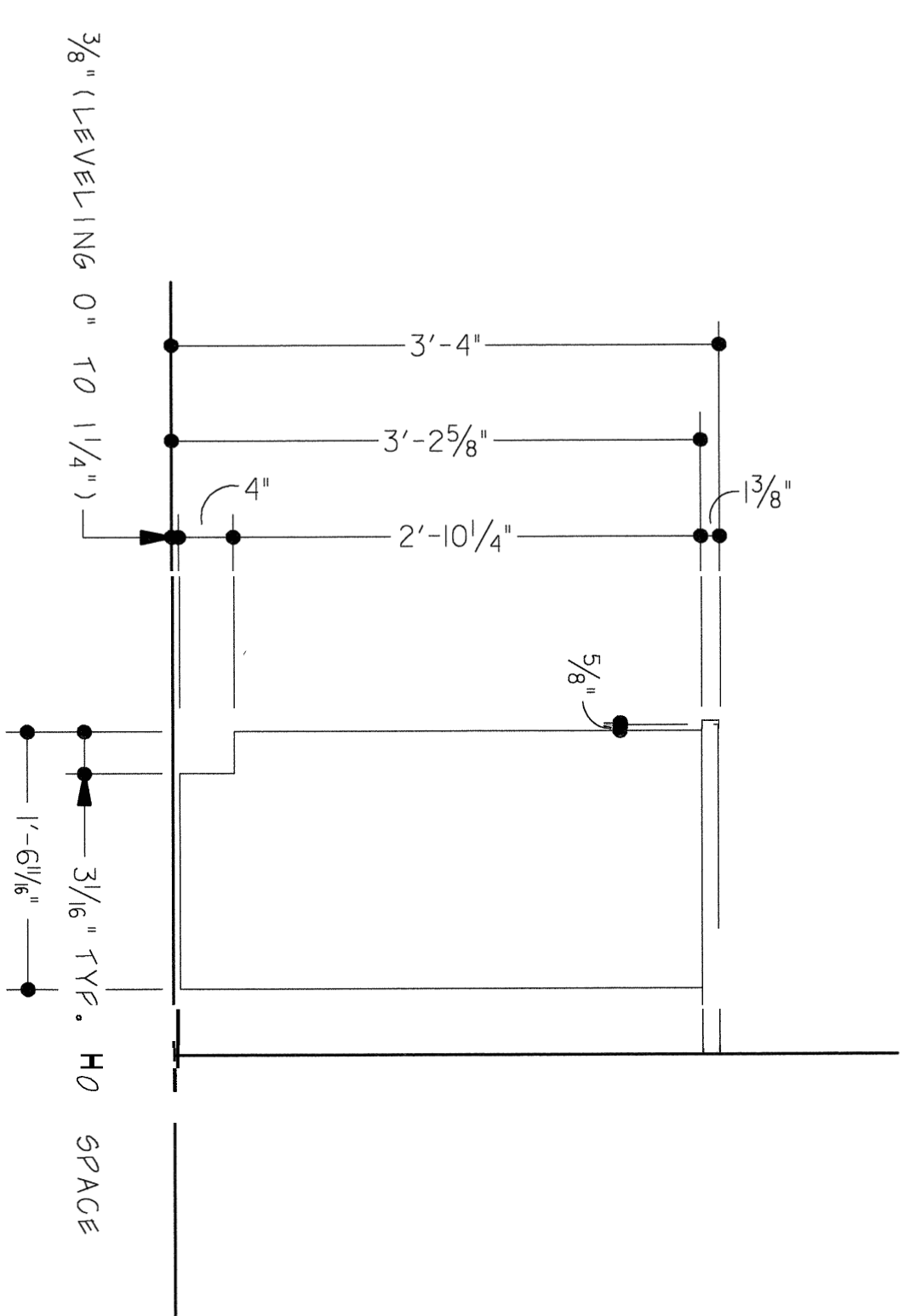


ELEVATION 'A' SCALE: 1/2" = 1'-0"

JOB CONDITIONS TO BE MET BEFORE INSTALLATION OF EQUIPMENT

Table with columns: ITEMS OF EQUIPMENT & STAGE OF INSTALLATION, and a grid of checkboxes for various job conditions like 'GROUND BROKEN', 'FOUNDATION POURED', etc.

INSTALLATION SCHEDULE



SECTION 'B' SCALE: 1/2" = 1'-0"

VOCON DESIGN INC. 2450 Prospect Avenue Cleveland, Ohio 44115

KW Architects Inc. 2450 Prospect Ave. 1st flr. Cleveland, Ohio 44115

THORSON BAKER & Associates, Inc. 3030 Summit Street Cleveland, Ohio 44130

Type II Branch Proposed New Construction 85 Commercial Street - Long Wolf Portland, ME



2025 Ontario St., 4th Floor, Cleveland, Ohio 44115

REVISIONS:

Issued for Bid and Permit 8/29/03

Drawn by: DD Checked by: Job Number: 3587-001 Dwg. Construction Phase: Documents Sheet Title: Title page and Backcounter Layout

DB-1

A080003

Original Date: August 29, 2003