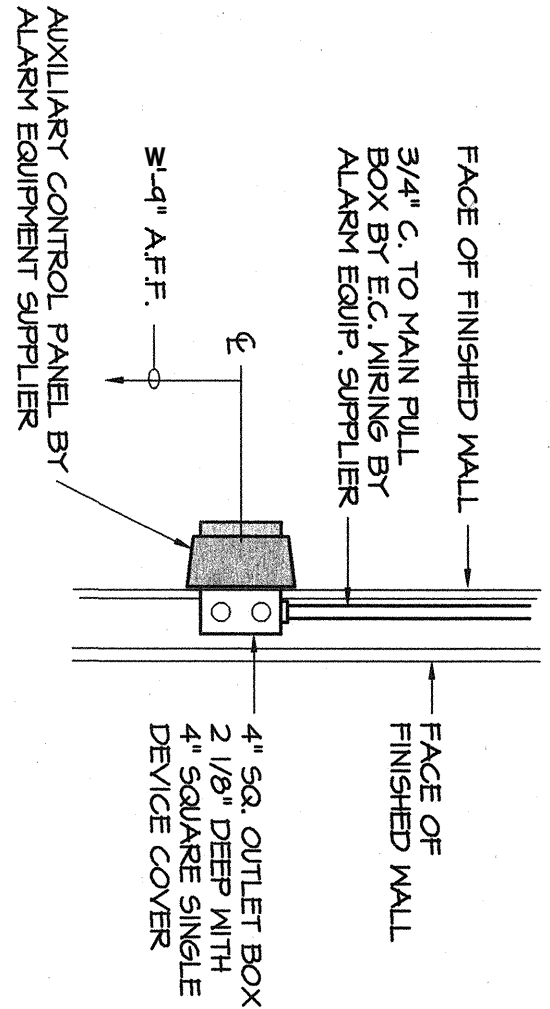
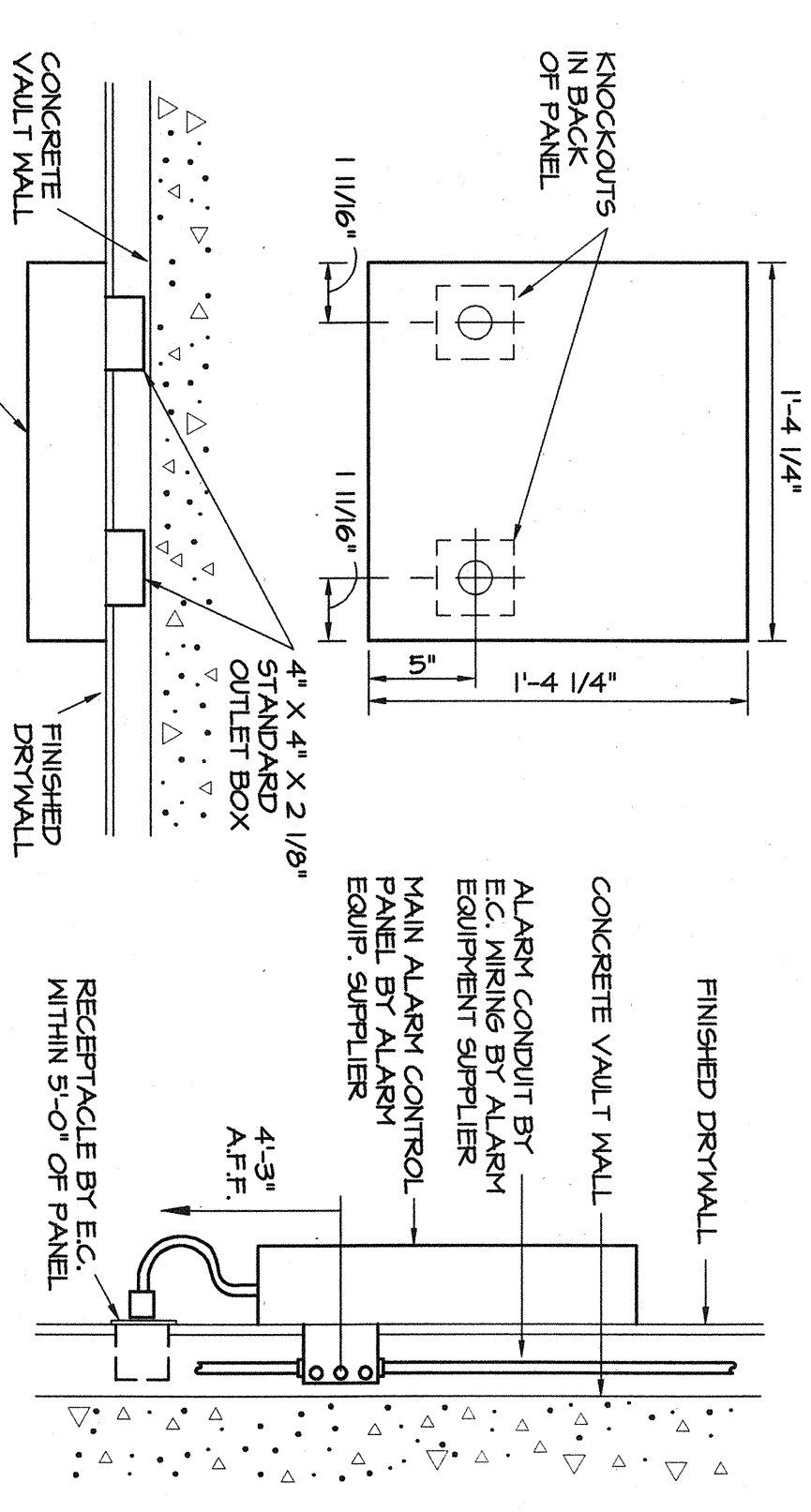


- NOTES
- SEE ARCHITECTURAL DOOR SCHEDULE FOR TYPE OF DOOR.
 - 3/4" ALARM CONDUIT TO NEAREST JUNCTION BOX. SEE PLAN.
 - JUNCTION BOX WITH BLANK COVER PLATE ABOVE CEILING ON PROTECTED SIDE OF WALL.
 - 3/4" ALARM CONDUIT TO FRAME.
 - ALARM DEVICE AND WIRING BY ALARM EQUIPMENT SUPPLIER.

DOOR CONTACT DETAIL
NO SCALE

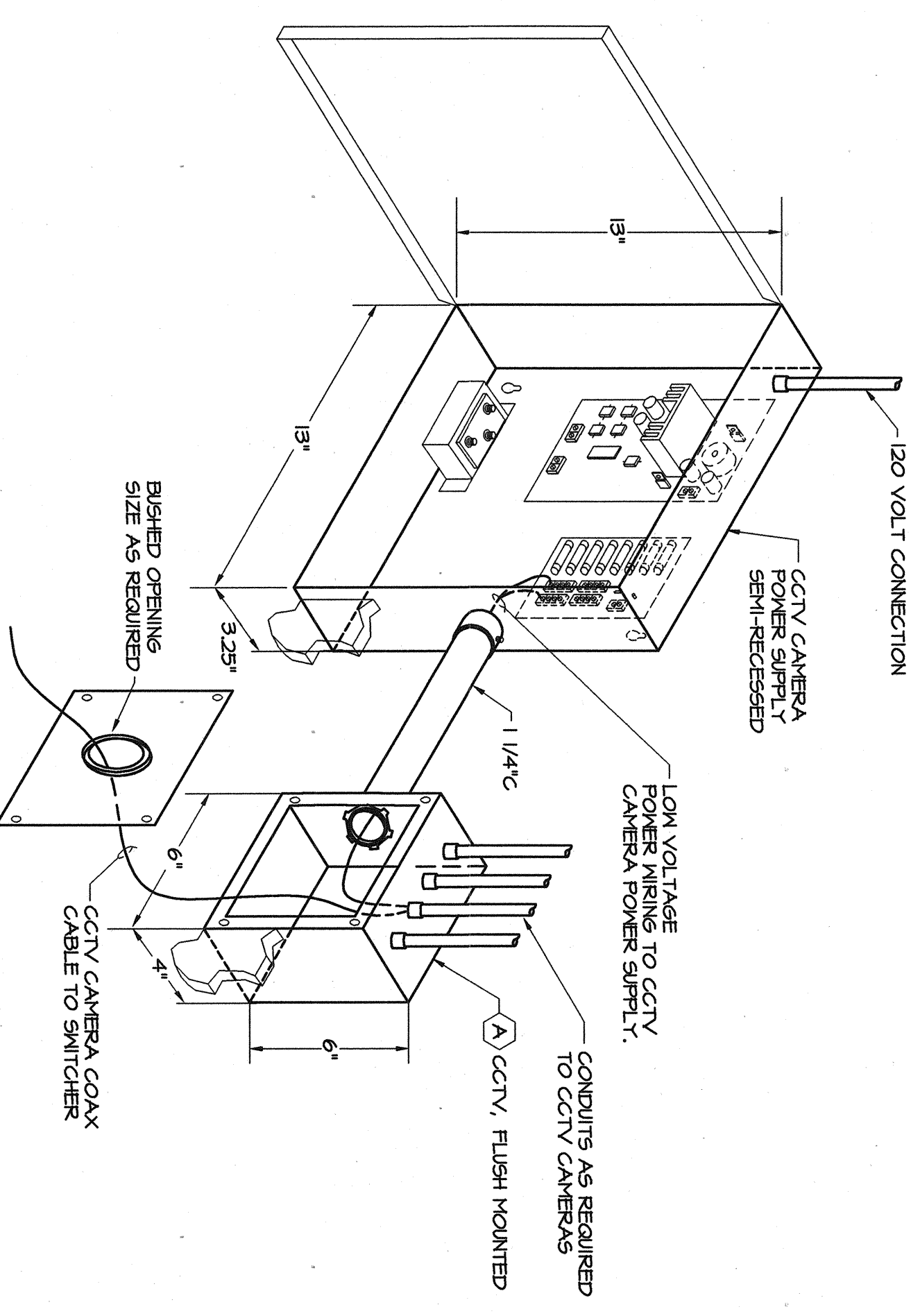


AUXILIARY CONTROL PANEL DETAIL
NO SCALE



MAIN CONTROL PANEL DETAIL
NO SCALE

JUNCTION BOX SPECIFICATIONS FOR SECURITY SYSTEM			
SYMBOL	ALARM DEVICE	JUNCTION BOX	REMARKS
⊗A	MAIN ALARM CONTROL	UNIVERSAL #2481 - 3/4" WITH 5/8" SINGLE DEVICE COVER	TWO 4"x4"x2 1/8" DEEP JUNCTION BOXES FOR LOW VOLTAGE WIRING.
⊗B	OUTSIDE ALARM BELL HOUSING	UNIVERSAL #5211 - 3/4" WITH 5/8" FLUSH MOUNTED JUNCTION BOX WITH FLAT SCREEN COVER AND CONCENTRIC KNOCKOUTS	MOUNT ABOVE FINISHED CEILING.
⊗C	PRIVATE PERSONNEL TELLER LINE	UNIVERSAL #2481 - 3/4" WITH 5/8" FLUSH MOUNTED JUNCTION BOX WITH FLAT SCREEN COVER	MOUNT JUNCTION BOX ON CONDUIT STUD IN REARWAY OF TELLERS KNEE SPACE.
⊗D	DRIVE-UP PERSONNEL	UNIVERSAL #5391 - 3/4" WITH 5/8" FLUSH MOUNTED JUNCTION BOX WITH FLAT SCREEN COVER	HOLLOW METAL FRONT FRAME - LOCATE JUNCTION BOX ABOVE DRIVE-UP PERSONNEL DOOR FRAME - BOX ACCESS FROM PROTECTED SPACE.
⊗E	SAFE PROTECTION	UNIVERSAL #5211 - 3/4" WITH 5/8" FLUSH MOUNTED JUNCTION BOX	SEE ARCHITECTURAL DOOR SCHEDULE FOR TYPE OF DOOR FRAME. PROVIDE A 3/4" CONDUIT FROM JUNCTION BOX SHOWN ON RISER CONNECTION TO SAFE.
⊗F	REVERSED MOTION TELLER	UNIVERSAL #5211 - 3/4" WITH 5/8" FLUSH MOUNTED JUNCTION BOX	LOCATE JUNCTION BOX ABOVE FINISHED FLOOR UNLESS JUNCTION BOX TO AUTOMATIC TELLER UNIT FINISHED WITH TELLER LINE PROTECTION.
⊗G	CASH DISPATCH	UNIVERSAL #5211 - 3/4" WITH 5/8" FLUSH MOUNTED JUNCTION BOX	INDICATES ALARM POINT ONLY. RUN ALARM CABLES WITH TELLER LINE PROTECTION.
⊗H	UNIVERSAL POWER SUPPLY	UNIVERSAL #5211 - 3/4" WITH 5/8" FLUSH MOUNTED JUNCTION BOX	MOUNT FLUSH WITH FINISHED WALL 5'-0" A.F.F.
⊗I	CELLULAR BACKUP	UNIVERSAL #5211 - 3/4" WITH 5/8" FLUSH MOUNTED JUNCTION BOX	MOUNT FLUSH IN CEILING ADJACENT TO CAMERA MOUNTING SPACE (SEE OTHER NOTES).
⊗J	CONCENTRIC CAMERA IN ATM HOUSING	UNIVERSAL #5211 - 3/4" WITH 5/8" FLUSH MOUNTED JUNCTION BOX	CAMERA IS LOCATED IN ATM HOUSING.
⊗K	CONCENTRIC CAMERA IN ENCLASURE	UNIVERSAL #5211 - 3/4" WITH 5/8" FLUSH MOUNTED JUNCTION BOX	CAMERA IS LOCATED ON DRIVE-UP CANTY CEILING.
⊗L	CCTV SYSTEM (RECORDER & MONITOR)	UNIVERSAL #5211 - 3/4" WITH 5/8" FLUSH MOUNTED JUNCTION BOX	MOUNT 24" ABOVE FINISHED FLOOR FLUSH WITH FINISHED WALL UNLESS OTHERS NOTED.
⊗M	IR Emitter Holder	UNIVERSAL #5211 - 3/4" WITH 5/8" FLUSH MOUNTED JUNCTION BOX	MOUNT IN ACCESSIBLE SPACE ABOVE CEILING.
⊗N	ALARM SROBE LIGHT	UNIVERSAL #5211 - 1/2" WITH 5/8" FLUSH MOUNTED JUNCTION BOX	MOUNT FLUSH WITH FINISHED CEILING.
⊗O	UNIVERSAL KEYPAD	UNIVERSAL #5211 - 3/4" WITH 5/8" FLUSH MOUNTED JUNCTION BOX	MOUNT FLUSH WITH FINISHED WALL AT 4'-0" A.F.F.
⊗P	DOOR ACCESS CONTROLLER	UNIVERSAL #5211 - 3/4" WITH 5/8" FLUSH MOUNTED JUNCTION BOX	MOUNT FLUSH WITH FINISHED WALL AT 4'-0" A.F.F.
⊗Q	IR Emitter	NO BOX REQUIRED	LOCATION SHOWN FOR REFERENCE ONLY.
⊗R	DOOR CONTACT SHUNT SWITCH	NO BOX REQUIRED	MOUNT FLUSH WITH FINISHED WALL AT 4'-0" A.F.F.



CCTV CAMERA POWER SUPPLY DETAIL
NO SCALE

SECURITY SYSTEM NOTES

NOTE A - UNLESS OTHERWISE NOTED OR UNLESS LOCAL CODES CALL FOR LARGER SIZES, ALL CONDUITS SHALL BE 3/4".

NOTE B - CONDUIT BETWEEN THE OUTSIDE ALARM BELL LOCATION ⊗B AND THE ALARM CONTROL LOCATION ⊗A MUST BE A 3/4" CONDUIT. THIS CONDUIT SHOULD NOT BE EXPOSED OUTSIDE THE BUILDING. THESE FALL BOXES OR FITTINGS MUST BE INCLUDED ON THE RISER DRAWING. THE FALL BOXES MUST BE FITTED TO THE CONDUITS. THEY MUST BE IDENTIFICATION TAPEDED.

NOTE C - THE UNIVERSAL NAME ON JUNCTION BOX IS FOR REFERENCE ONLY. AN ACCEPTABLE ALTERNATE CAN BE USED. BE SURE DIMENSIONS ARE MAINTAINED.

GENERAL NOTES

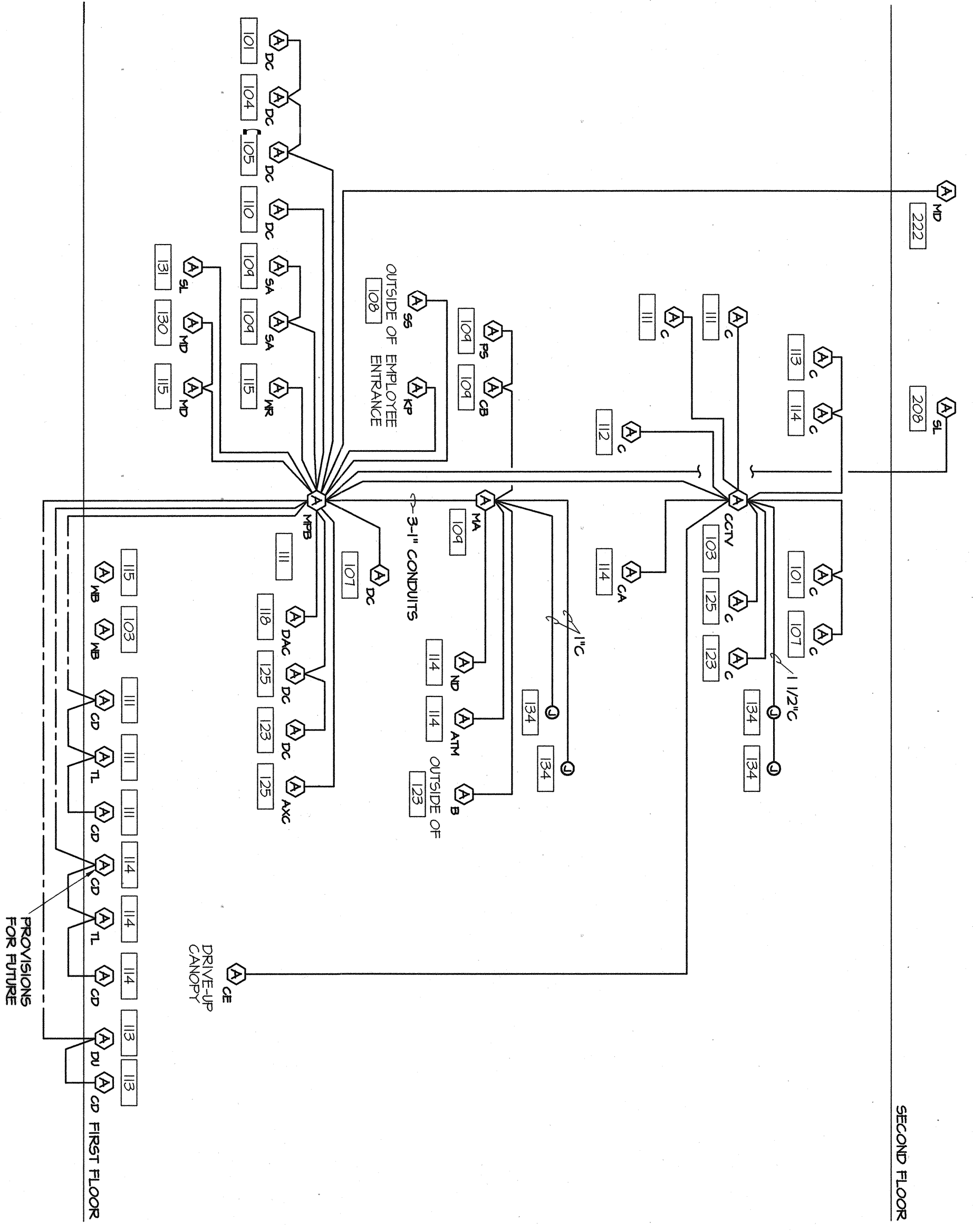
- ALL OF THE JUNCTION BOXES LISTED UNDER THE JUNCTION BOX SPECIFICATION FOR SECURITY SYSTEM ARE TO BE INSTALLED IN THE JUNCTION BOXES LISTED IN THIS DRAWING AND FLOOR PLANS - SYSTEMS FOR JUNCTION BOXES USED.
- ALL DETAILS AND DIMENSIONS SHOWN ON THIS DRAWING ARE GIVEN FOR REFERENCE ONLY. THE E.C. SHALL VERIFY REQUIRED MOUNTING AND DIMENSIONS WITH SECURITY SYSTEM SUPPLIER PRIOR TO INSTALLATION.

NOTES

- E.C. SHALL FURNISH AND INSTALL ALL CONDUITS AND JUNCTION BOXES. SECURITY AND DRIVE-UP SYSTEM SUPPLIER SHALL FURNISH AND INSTALL EQUIPMENT, FURNISH CABLES AND TERMINATE CABLES.

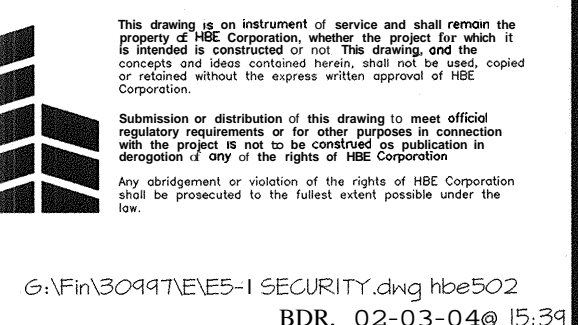
SECURITY SYSTEM RISER DIAGRAM LEGEND

- ⊗ JUNCTION BOX FOR SECURITY SYSTEM. DC INDICATES JUNCTION BOX DESIGNATION.
- CONDUIT ROUTED CONCEALED ABOVE CEILING OR IN WALLS. SEE NOTES A AND B OF SECURITY SYSTEM NOTES.
- CONDUIT ROUTED CONCEALED IN FLOOR SLAB. SEE NOTE A OF SECURITY SYSTEM NOTES.



Security Alarm Riser Diagram
NO SCALE

DETAILS ON THIS DRAWING ARE BASED ON DIEBOLD.

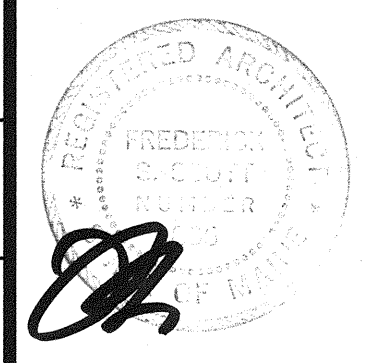
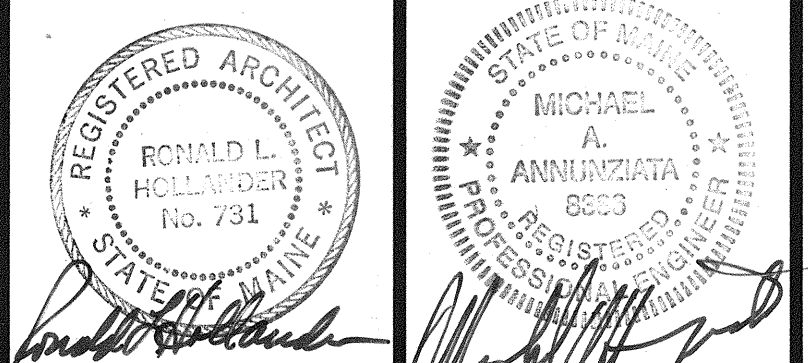


A New Building for
EVERGREEN CREDIT UNION
Portland, Maine

Construction By
HBE Financial Facilities
A Division of HBE Corporation, 11330 Olive Boulevard, St. Louis, Missouri 63141, Phone (314) 567-9000

Frederick S. Scott, Architect
Ronald L. Hollander, Architect

11330 Olive Boulevard, St. Louis, Missouri 63141 (314) 567-9000



Sheet No. **E5.1**
DCA
LFA
GSA

Scale: 2-1/4"=1'-0"