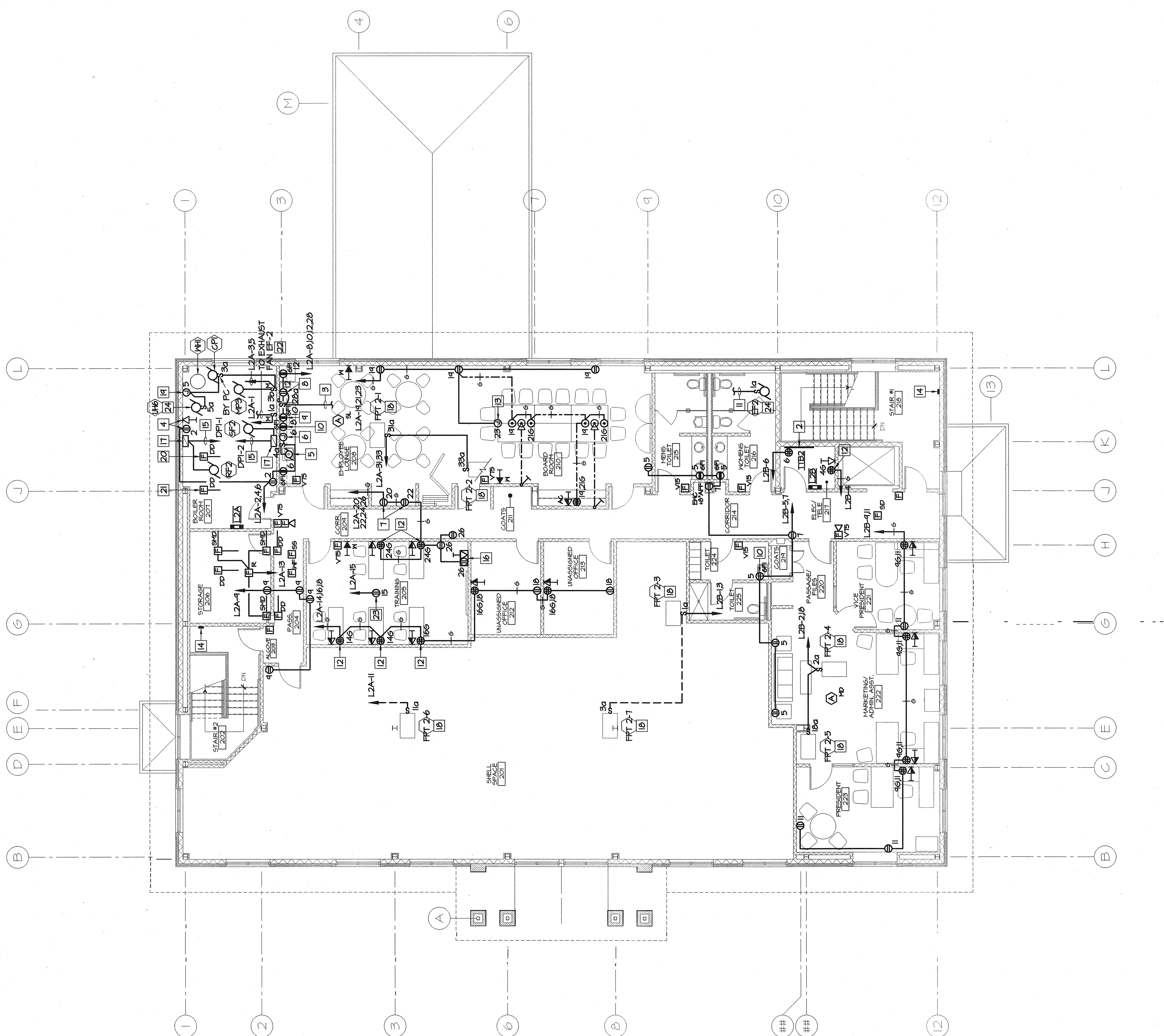


EVERGREEN CREDIT UNION
1130 OLIVE BOULEVARD, ST. LOUIS, MISSOURI 63141
(314) 597-9000
FREDRICK S. SCOTT, ARCHITECT
RONALD L. HOLLANDER, ARCHITECT
1130 OLIVE BOULEVARD, ST. LOUIS, MISSOURI 63141
(314) 597-9000

- NOTES:**
- FOR SECURITY ALARM JUNCTION BOX AND CONDUIT REQUIREMENTS, SEE SHEET EB.1.
 - 4"X8"X4" DEEP PLYWOOD BACKBOARD BY G.C. FOR MOUNTING OF TELEPHONE EQUIPMENT.
 - ROUTE UP TO EXHAUST FAN EF4 ON ROOF. SEE SITE PLAN, SHEET E1.1 FOR LOCATION.
 - DUPLEX RECEPTACLE AND EDP OUTLET BY E.C. FOR TIME CLOCK FURNISHED AND INSTALLED BY M.C.. MOUNT "4'-0" ABOVE FINISHED FLOOR.
 - GARBAGE DISPOSAL FURNISHED AND INSTALLED BY P.C.. E.C. SHALL FURNISH AND INSTALL A JUNCTION BOX "18" ABOVE FINISHED FLOOR AND A SPST SWITCH "6" ABOVE COUNTER AND WIRE TO DISPOSAL AS REQUIRED.
 - JUNCTION BOX BY E.C. MOUNTED "18" ABOVE FINISHED FLOOR FOR DISHWASHER. E.C. TO FURNISH AND INSTALL A SPST SWITCH ADJACENT TO JUNCTION BOX.
 - DUPLEX RECEPTACLE BY E.C. FOR REFRIGERATOR.
 - DUPLEX RECEPTACLE BY E.C. FOR MICROWAVE. COORDINATE WITH ARCHITECTURAL DRAWINGS FOR MOUNTING HEIGHT.
 - DUPLEX RECEPTACLE "18"-6" ABOVE FINISHED FLOOR.
 - ROUTE TO MANUAL MOTOR STARTER IN BOILER ROOM 207.
 - PROVIDE ONLY ISOLATED GROUND RECEPTACLES AT THIS LOCATION.
 - JUNCTION BOX BY E.C. MOUNTED IN ACCESSIBLE CEILING SPACE FOR CONNECTION TO FUTURE POWER POINT PROJECTOR.
 - AREA OFF RESCUE CALLING STATION. MOUNT "4'-0" ABOVE FINISHED FLOOR. FOR DESCRIPTION, SEE SPECIFICATIONS. FOR WIRING, SEE AREA OF RESCUE WIRING DIAGRAM, SHEET EB.2.
 - FOR SIZE, SEE ONE LINE RISER DIAGRAM, SHEET EB.1.
 - DUPLEX RECEPTACLE AND JUNCTION BOX BY E.C. MOUNTED "18" ABOVE FINISHED FLOOR FOR TELEVISION/COR CONNECTION. SUB "12" LEFT CONDUIT INTO ACCESSIBLE CEILING SPACE.
 - VARIABLE FREQUENCY DRIVE FURNISHED BY THE M.C., INSTALLED AND WIRED BY THE E.C.. FAN POWERED TERMINAL BOX FURNISHED BY M.C.. E.C. TO FURNISH AND INSTALL A HORSEPOWER RATED TOGGLE SWITCH AND WIRE TO UNIT AS REQUIRED. MOUNT SWITCH ADJACENT TO, BUT NOT DIRECTLY ON, UNIT.
 - GAS WATER HEATER FURNISHED AND INSTALLED BY M.C.. E.C. TO MAKE 120 VOLT ELECTRICAL CONNECTION AS REQUIRED. MOUNT JUNCTION BOX "18"-6" ABOVE FINISHED FLOOR.
 - DUCT DETECTOR BY E.C. FOR SHUT DOWN OF SUPPLY FAN. COORDINATE WITH M.C. FOR MOUNTING LOCATION IN DUCT. FOR DESCRIPTION, SEE SPECIFICATIONS.
 - DUCT DETECTOR BY E.C. FOR SHUT DOWN OF RETURN FAN. COORDINATE WITH M.C. FOR MOUNTING LOCATION IN DUCT. FOR DESCRIPTION, SEE SPECIFICATIONS.
 - ROUTE 2"X1/2" CONDUIT TO THE GLOCK IN BOILER ROOM 207. SEE DIAGRAM D-1, SHEET EB.1.
 - DUPLEX RECEPTACLE BY E.C. MOUNTED IN ACCESSIBLE CEILING SPACE FOR CONNECTION TO CEILING MOUNTED PROJECTOR.
 - INSTALL HORSEPOWER RATED TOGGLE SWITCH.

NOTE: THE NEG. AS WELL AS THE SPECIFICATIONS UNDER THE SECTION ENTITLED "OUTLET BOXES, SPECIFICALLY LISTED UNDER THE HEADING "RECEPTACLES AND SWITCHES" IS REQUIRED OF THIS. CONSIDERATION SHALL BE GIVEN TO PLASTER RING METAL GANGE THICKNESS AND RING SCREEN HEAD THICKNESS IN SETTING THE BOX. CONSIDER THIS REQUIREMENT. ATTENTION IS ALSO CALLED TO THE REQUIREMENT FOR INSTALLING BOXES SECURELY AND SQUARE AND TRUE.

NOTE: THE GROUND WIRE SHALL BE CONNECTED ONLY TO THE ISOLATED GROUND RECEPTACLES. DO NOT CONNECT IT TO ANY OTHER DEVICE OR ANY OTHER OUTLET BOX. THE GROUNDED (NEUTRAL) CONDUCTOR SHALL NOT RELY ON RECEPTACLE TERMINALS FOR CONTINUITY. ONLY ONE CONNECTION WILL BE PERMITTED TO THE NEUTRAL TERMINAL RECEPTACLES AND THROUGH A SINGLE WIRE FROM THE SPLICE TO THE RECEPTACLES.



SECOND FLOOR PLAN - SYSTEMS
1/8"=1'-0"
N