

Frederick S. Scott, Architect
 Ronald L. Hollander, Architect

(314) 957-9000

Construction By
HBE Financial Facilities

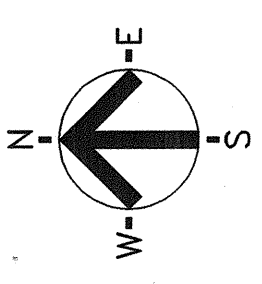
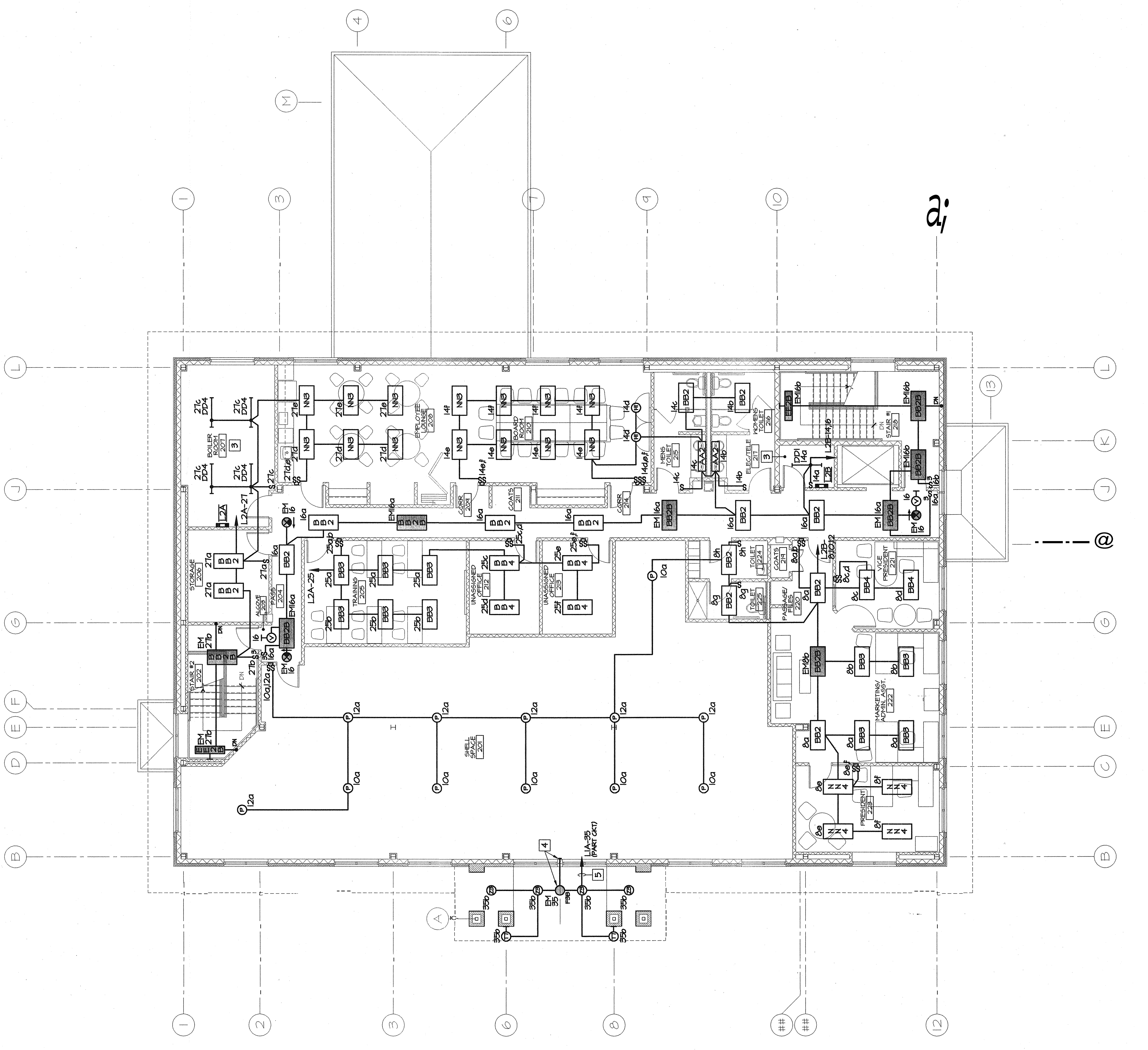
A Division of HBE Corporation, 1530 Olive Boulevard, St. Louis, Missouri 63141 Phone (314) 957-9000



EVERGREEN CREDIT UNION
 A New Building for
 Portland, Maine

NOTE: THE NEC, AS WELL AS THE SPECIFICATIONS UNDER THE SECTION ENTITLED "OUTLET BOXES," SPECIFICALLY CALLS ATTENTION TO THE CARE NEEDED IN SETTING FLUSH BOXES. THE BOXES SHOULD BE SET TO THE FINISH SURFACE OF THE CEILING. THE GANGE THICKNESS AND RING SCREEN HEAD THICKNESS IN SETTING THE BOX, CONSIDERATION SHALL BE GIVEN TO PLASTER RING METAL FINISH. ATTENTION IS ALSO CALLED TO THE REQUIREMENT FOR INSTALLING BOXES SECURELY AND SQUARE AND TRUE.

- NOTES:
1. LIGHT FIXTURE LOCATIONS ARE SHOWN APPROPRIATE FOR EXACT LOCATION IN CEILING AND CEILING TYPE. SEE ARCHITECTURAL REFLECTED CEILING PLAN.
 2. WHERE TOGGLE SWITCHES ARE LOCATED TOGETHER, FINISH WITH COMMON COVERPLATE.
 3. E.C. TO FINISH AND INSTALL LIGHTING FIXTURES INDICATED, CHAIN OR PENDANT MOUNTED AS REQUIRED. LIGHTING FIXTURE LOCATIONS SHALL BE COORDINATED WITH PANELS, GAUGES, MECHANICAL EQUIPMENT, ARCHITECT.
 4. MOUNT BATTERY BACK AND TEST SWITCH ON WALL, 4'-0" ABOVE FINISHED FLOOR WITHIN 5' OF LIGHTING FIXTURE. FINISH MAGNETIC BALLASTS FOR FIXTURE. WIRE 50' FEATURE IS ONLY ON EXHIBIT LOSS OF NORMAL POWER.
 5. ROUTE DOWN TO PANEL INDICATED VIA TIME SWITCH LCP1 LOCATED IN BOILER ROOM 110. FOR LOCATION, SEE SHEET E4.1. FOR WIRING, SEE SITE LIGHTING CONTROL DIAGRAM, SHEET E3.2.



SECOND FLOOR PLAN - LIGHTING
 1/8"=1'-0"

© 2004 HBE Corporation
 All rights reserved. No part of this document may be reproduced without the written permission of HBE Corporation.