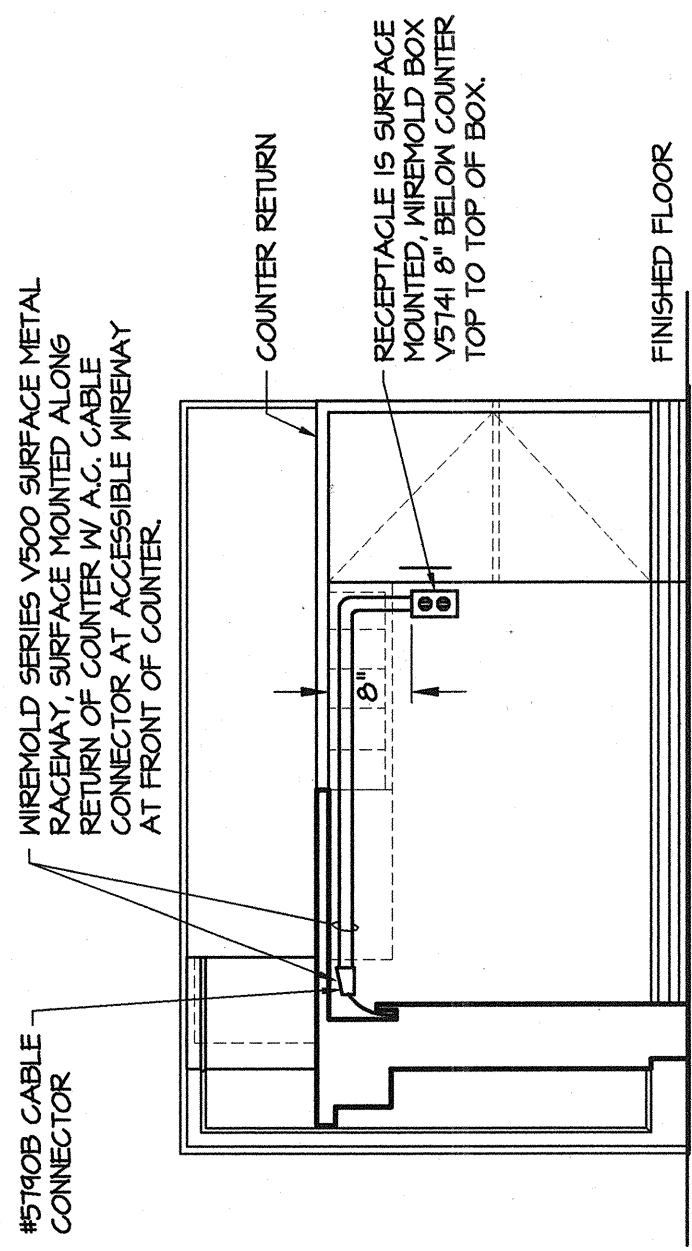


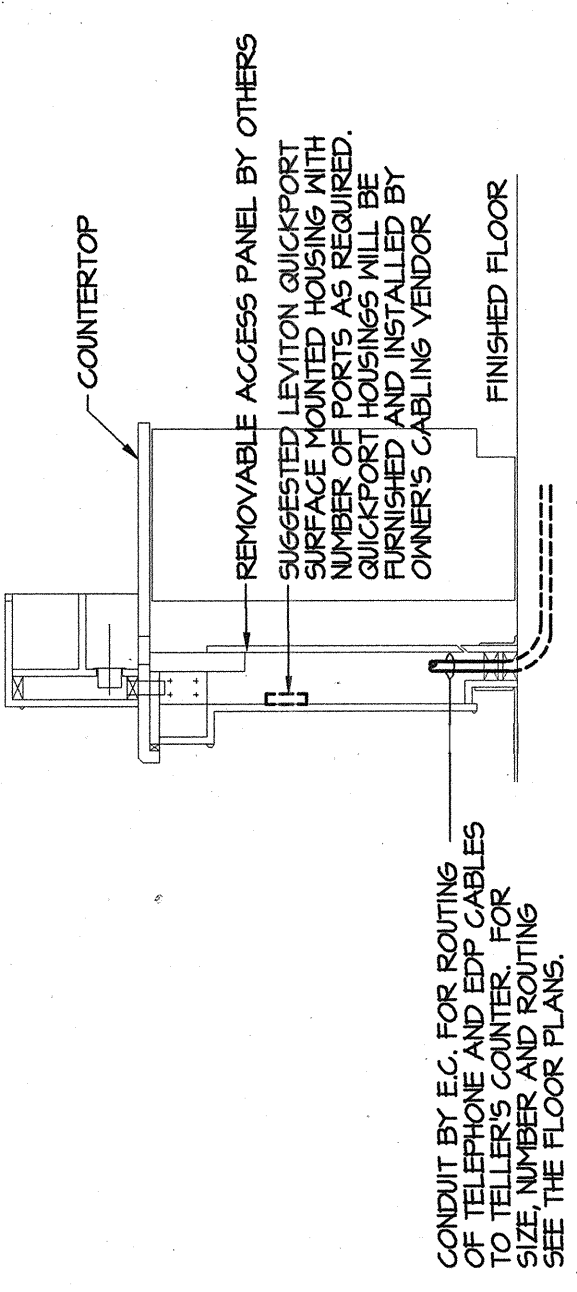
© 2004 HBE Corporation
All rights reserved. No part of this document may be reproduced without the written permission of HBE Corporation.
HBE Corporation, 1330 Olive Boulevard, St. Louis, Missouri 63141
Phone: (314) 567-9000
Fax: (314) 567-9001
www.hbe.com



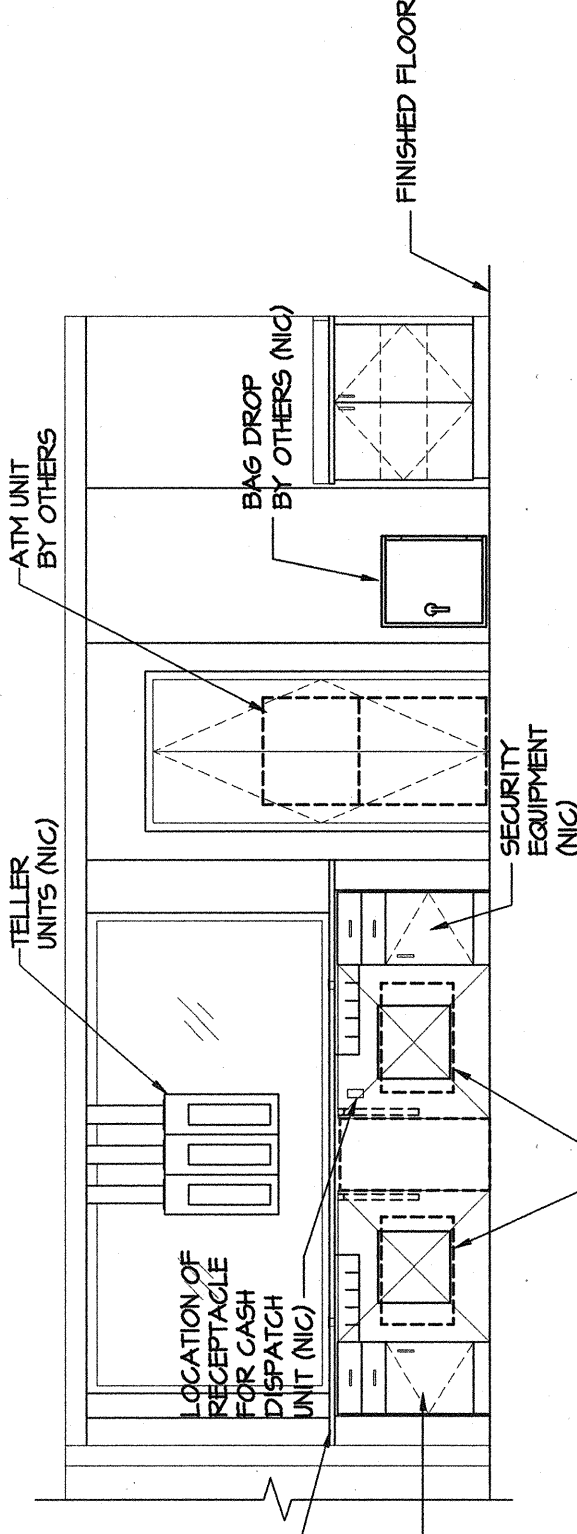
- NOTES:**
- 1 DUPLEX RECEPTACLE BY E.C. MOUNTED IN DRIVE-UP CANOPY CEILING FOR POWER TO CUSTOMER UNIT BLOWER MOTOR. FOR WIRING, SEE TYPICAL CUSTOMER UNIT RISER, THIS SHEET.
 - 2 DUPLEX RECEPTACLE BY E.C. FOR CUSTOMER UNIT CONTROL BOX. SEE TYPICAL CUSTOMER UNIT RISER, THIS SHEET.
 - 3 DOUBLE DUPLEX RECEPTACLE BY E.C. FOR CUSTOMER UNIT COMMUNICATION SYSTEM. SEE TYPICAL CUSTOMER UNIT RISER, THIS SHEET.
 - 4 P CONDUIT BY E.C. FOR CUSTOMER UNIT COMMUNICATION AND CONTROL CABLES. FOR ROUTING OF CABLES, SEE TYPICAL CUSTOMER UNIT RISER, THIS SHEET.
 - 5 JUNCTION BOX BY E.C. MOUNTED BELOW TELLER'S COUNTER FOR CUSTOMER UNIT COMMUNICATION CABLES. SEE TYPICAL CUSTOMER UNIT RISER, THIS SHEET.
 - 6 P CONDUIT BY E.C. FOR CUSTOMER UNIT CONTROL CABLES. FOR ROUTING OF CONDUIT, SEE TYPICAL CUSTOMER UNIT RISER, THIS SHEET.
 - 7 JUNCTION BOX MOUNTED IN ACCESSIBLE CEILING SPACE FOR CUSTOMER UNIT CONTROL CABLES. SEE TYPICAL CUSTOMER UNIT RISER, THIS SHEET.
 - 8 3/4" EMT CONDUIT BY E.C. STUBBED OUT INTO CEILING SPACE OF DRIVE-UP CANOPY. SEE TYPICAL CUSTOMER UNIT RISER, THIS SHEET.
 - 9 3/4" EMT CONDUIT BY E.C. ROUTED DOWN TO TELLER UNIT. SEE TYPICAL CUSTOMER UNIT RISER, THIS SHEET.
 - 10 1/4" EMT CONDUIT BY E.C. FOR ROUTING OF TELEPHONE AND EDP CABLES TO TELLER'S COUNTER. SEE TYPICAL CUSTOMER UNIT RISER, THIS SHEET.
 - 11 SURFACE MOUNT RECEPTACLE IN WIREMOLD BOX IN 2" x 4" ON SIDE OF COUNTER BEYOND FROM BOX SIDE WIREMOLD SERIES 500 RADIANT HEATING WIREWAY AT FRONT OF COUNTER. SEE WIREMOLD SERIES 500 MOUNTING DETAIL, THIS SHEET.
 - 12 DUPLEX RECEPTACLE BY E.C. MOUNTED BELOW COUNTER FOR CASH DISPENSER UNIT.
 - 13 FINISH AND INSTALL WIREMOLD SERIES 2000 FLUSHMOUNT WITH OUTLETS UP ON CENTER ALONG WITH WIREMOLD SERIES 500 RADIANT HEATING WIREWAY AT FRONT OF COUNTER. REFER TO ARCHITECTURAL DRAWINGS FOR MOUNTING DETAILS. EMBLEM INTO BACK OF WIREMOLD. CONNECT CONDUIT TO WIREMOLD WITH A 90 DEGREE SHORT ELBOW INTO BACK OF WIREMOLD. REFER TO ARCHITECTURAL DRAWINGS FOR MOUNTING DETAILS.
 - 14 DUPLEX RECEPTACLE BY E.C. FOR WALL MOUNTED RADIANT HEATING PANEL. E.C. SHALL FURNISH AND INSTALL A 1" MATT RADIANT HEATING PANEL. BERCO CATALOG DOZEL OR EQUAL. MOUNT HEATING PANEL ON CLOSURE PANEL. E.C. SHALL NOTCH CLOSURE PANEL FOR HEATER CONDUIT.



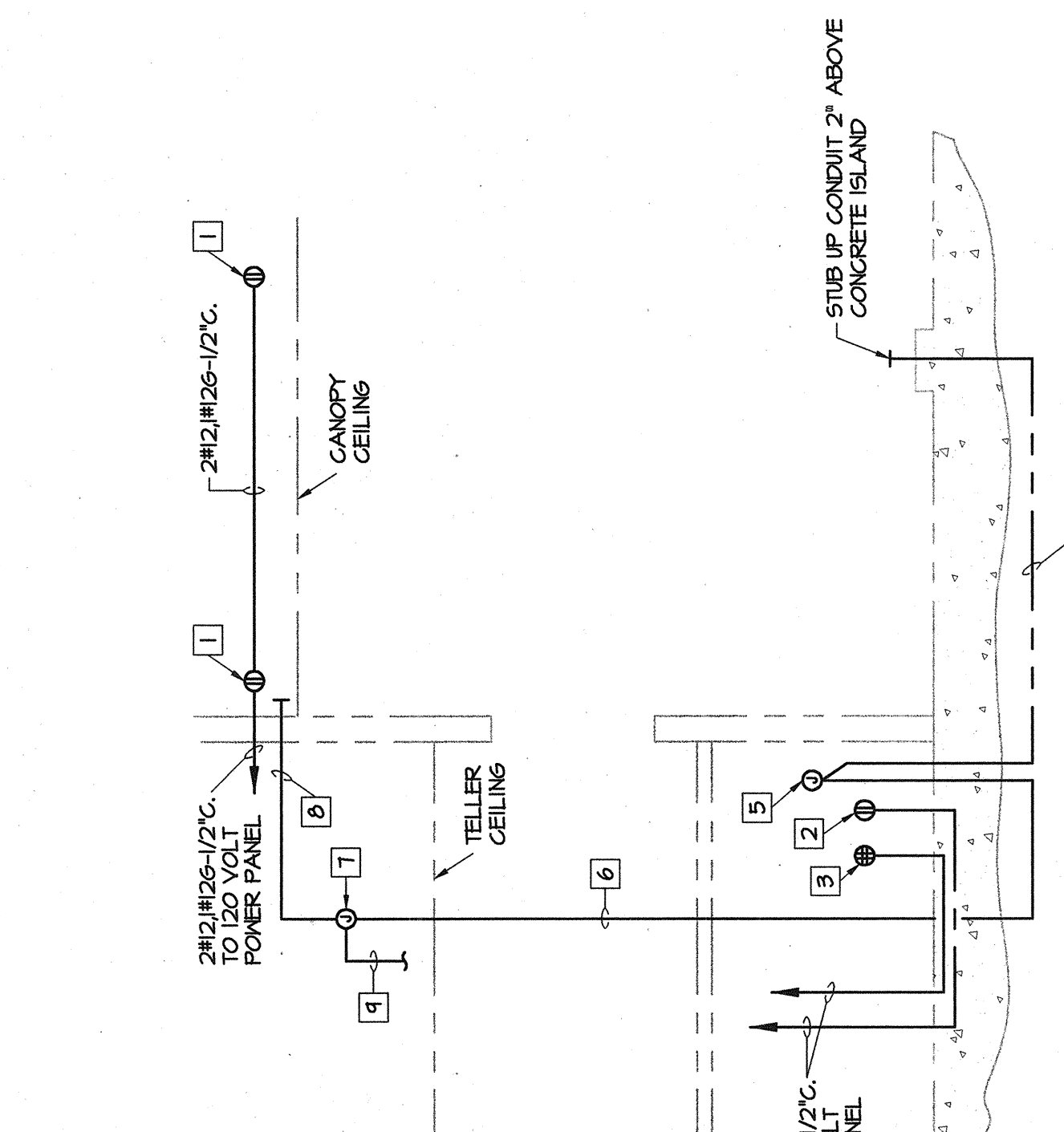
WIREMOLD SERIES 500 MOUNTING DETAIL
NO SCALE



DETAIL 'A'
NO SCALE

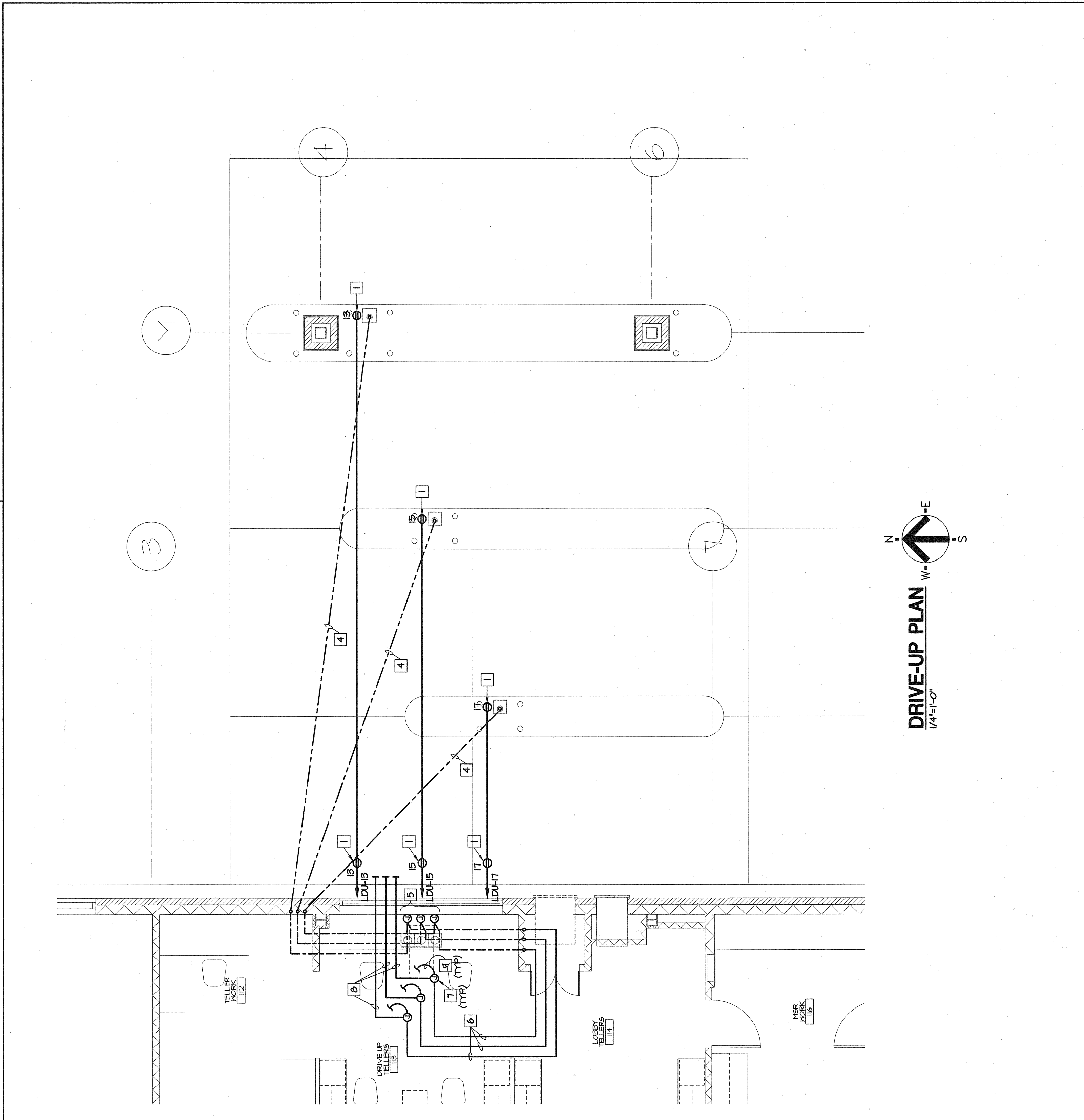


DRIVE-UP COUNTER ELEVATION
SCALE: 1/4"=1'-0"

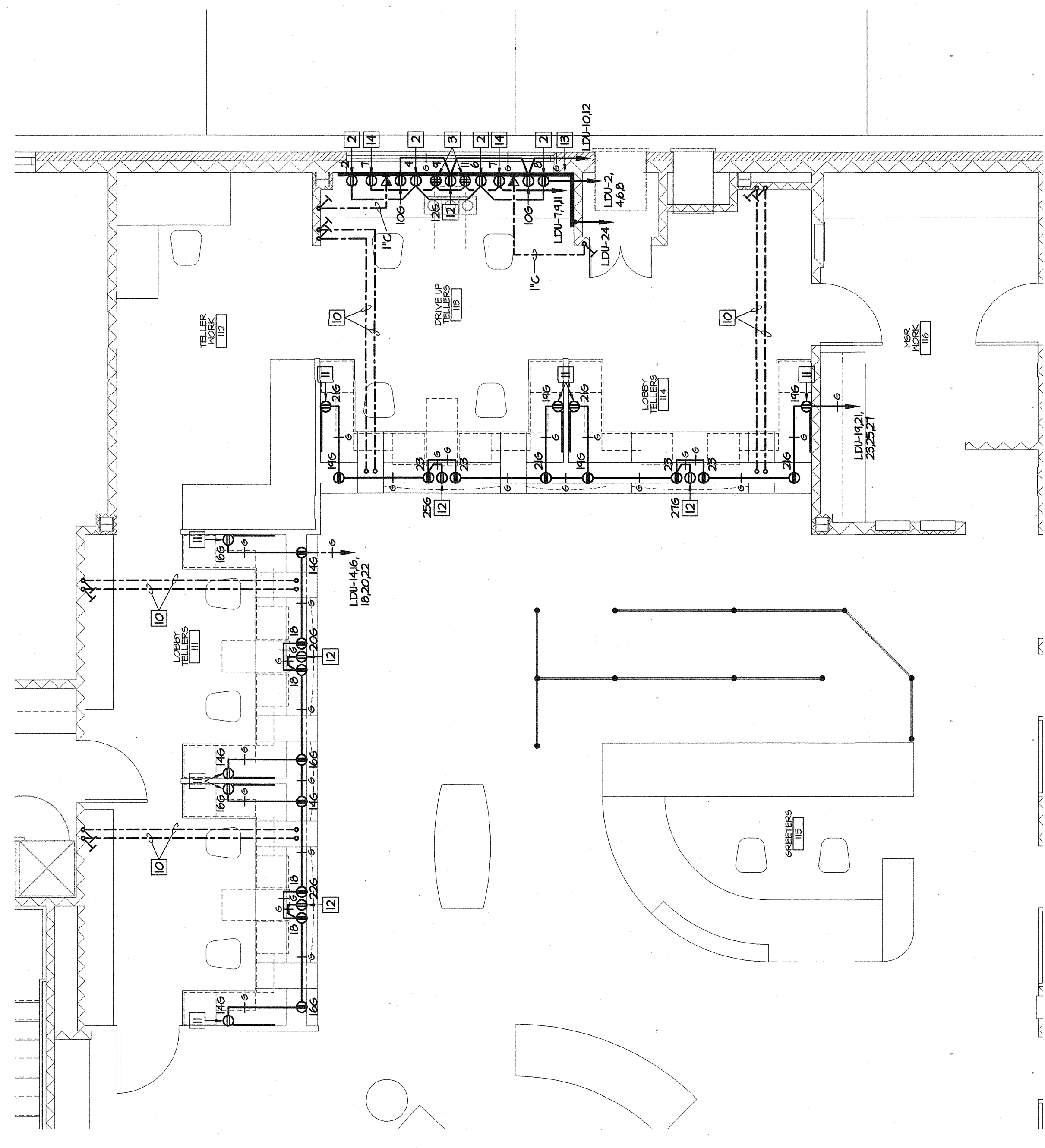


TYPICAL CUSTOMER UNIT RISER
NO SCALE

- NOTES:**
- 1 DUPLEX RECEPTACLE FOR POWER FOR CUSTOMER UNIT BLOWER MOTOR.
 - 2 DUPLEX RECEPTACLE FOR POWER FOR CUSTOMER UNIT CONTROL BOX.
 - 3 DOUBLE DUPLEX RECEPTACLE FOR POWER FOR CUSTOMER UNIT COMMUNICATION SYSTEM.
 - 4 P CONDUIT FOR ROUTING OF CUSTOMER UNIT CONTROL AND COMMUNICATION CABLES.
 - 5 JUNCTION BOX BELOW TELLER COUNTER FOR CUSTOMER UNIT COMMUNICATION CABLES.
 - 6 P CONDUIT FOR ROUTING OF CUSTOMER UNIT CONTROL CABLES.
 - 7 JUNCTION BOX ABOVE CEILING FOR CUSTOMER UNIT CONTROL CABLES.
 - 8 3/4" EMT CONDUIT BY E.C. STUBBED OUT INTO CEILING SPACE OF DRIVE-UP CANOPY.
 - 9 3/4" EMT CONDUIT BY E.C. ROUTED DOWN TO TELLER UNIT.



DRIVE-UP PLAN
1/4"=1'-0"



DRIVE-UP TELLERS & LOBBY TELLERS
1/4"=1'-0"