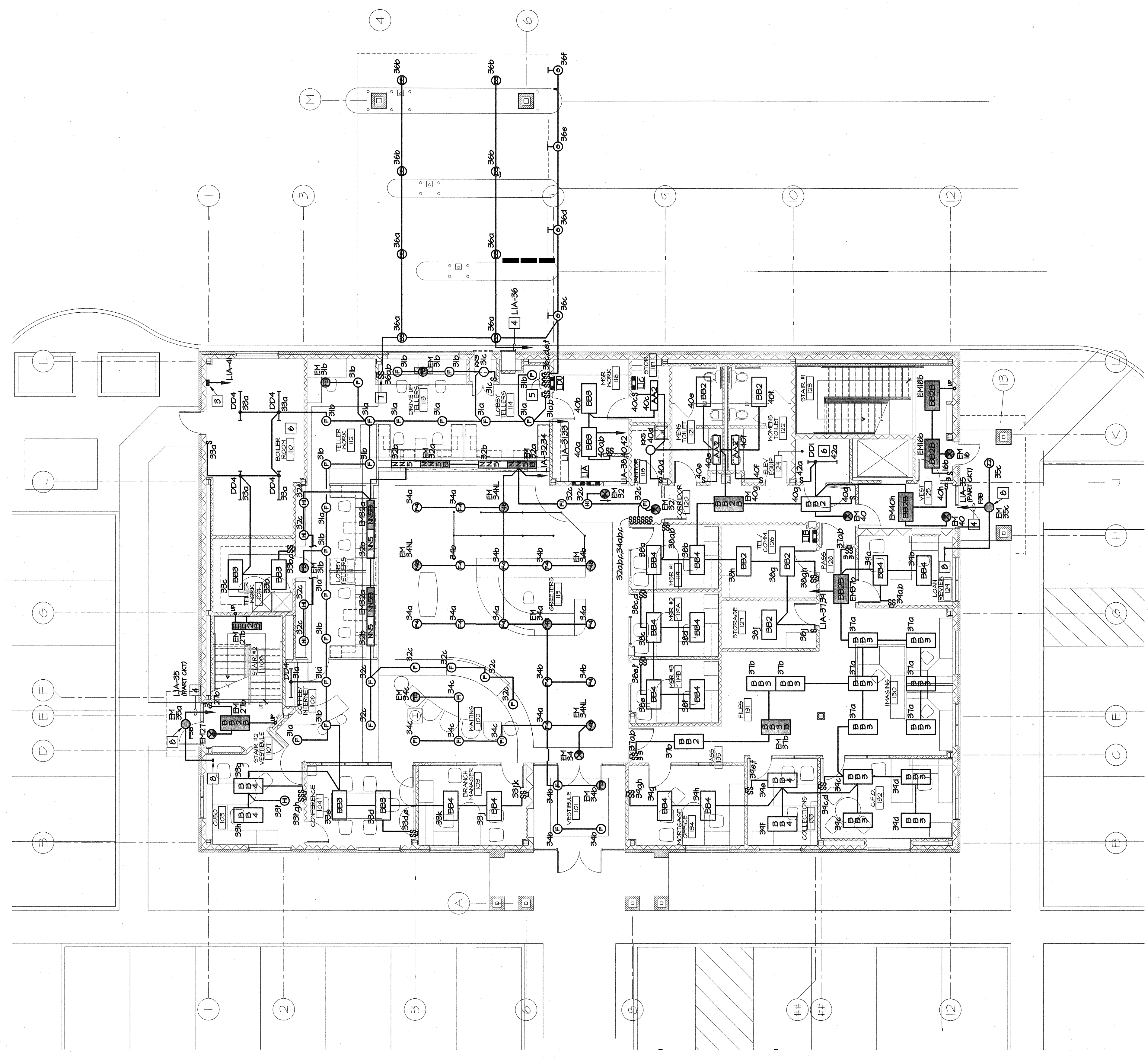


Sheet No.	E4.1			
DKA	LE	GSA	DB	AB
DB	LE	GSA	DB	AB

© EVERGREEN CREDIT UNION
 01/03/04
 01/03/04
 01/03/04

- NOTES:**
1. LIGHT FIXTURE LOCATIONS ARE SHOWN APPROXIMATE. FOR EXACT LOCATION IN CEILING AND CEILING TYPE, SEE ARCHITECTURAL REFLECTED CEILING PLAN.
 2. WHERE TOGGLE SWITCHES ARE LOCATED TOGETHER, FINISH WITH COMMON COVERPLATE.
 3. TIME SWITCH LCP FOR SITE LIGHTING CONTROL. FOR DESCRIPTION AND WIRING, SEE SITE LIGHTING CONTROL DIAGRAM SHEET E52.
 4. ROUTE TO PANEL INDICATED VIA TIME SWITCH LCP1 LOCATED IN BOILER ROOM. SEE SITE LIGHTING CONTROL DIAGRAM SHEET E52.
 5. FOUR GANG, THREE POSITION SWITCHES WITH CENTER "OFF" FINISHED WITH DRIVE-UP LANE CONTROL LIGHTS BY G.C., INSTALLED AND WIRED BY E.C. FOR WIRING, SEE SCHEMATIC - TYPE 'S' FIXTURE SHEET E52.
 6. E.C. TO FINISH AND INSTALL LIGHTING FIXTURES INDICATED. CHAIN OR PENDANT MOUNTED AS REQUIRED. FINISH WITH FINISH PLATE. LIGHTING FIXTURE LOCATIONS AND MOUNTING LOCATIONS SHALL BE APPROVED BY THE ARCHITECT.
 7. OVERRIDE SWITCHES FOR DRIVE-UP CANOPY LIGHTING.
 8. INSTALL BATTERY PACK IN ACCESSIBLE CEILING SPACE WITHIN 5' OF LIGHTING FIXTURE. INSTALL TEST SWITCH IN CEILING TILE NEAREST BATTERY PACK LOCATION. FINISH MAGNETIC BALLASTS FOR FIXTURE.

NOTE:
 THE NEC, AS WELL AS THE SPECIFICATIONS UNDER THE SECTION ENTITLED "OUTLET BOXES AND ELECTRICAL PANELS" REQUIRE THAT THE MAXIMUM DISTANCE FROM THE FINISH SURFACE OF THE BOXES TO THE CENTER OF THE LIGHTING FIXTURE SHALL BE 18" MAXIMUM. THIS REQUIREMENT SHALL BE GIVEN TO PLASTER RING METAL BOXES AND SHALL BE GIVEN TO USING PIPERS RINGS AS A MEANS TO ACCOMPLISH THIS REQUIREMENT. ATTENTION IS ALSO CALLED TO THE REQUIREMENT FOR INSTALLING BOXES SECURELY AND SQUARE AND TRUE.



FIRST FLOOR PLAN - LIGHTING
 1/8" = 1'-0"