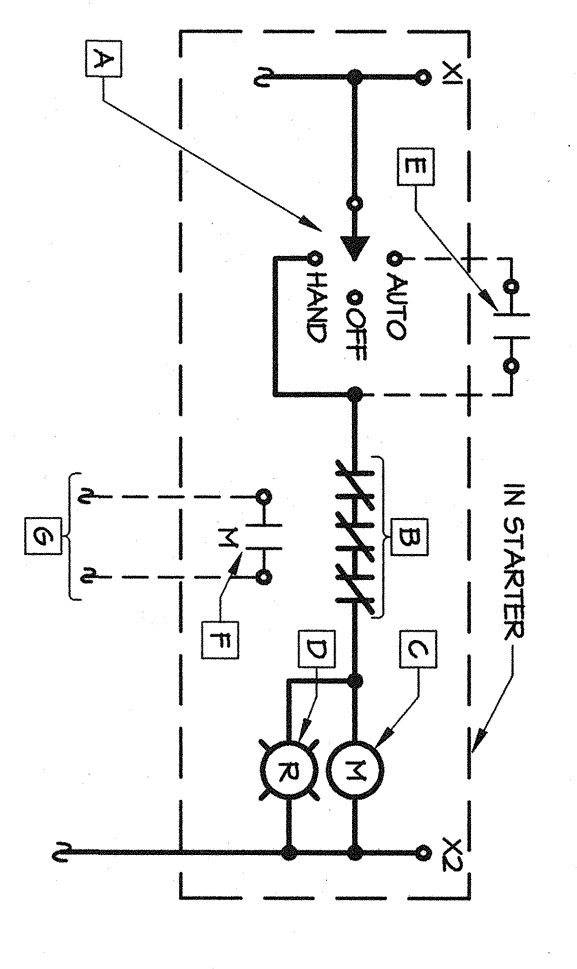
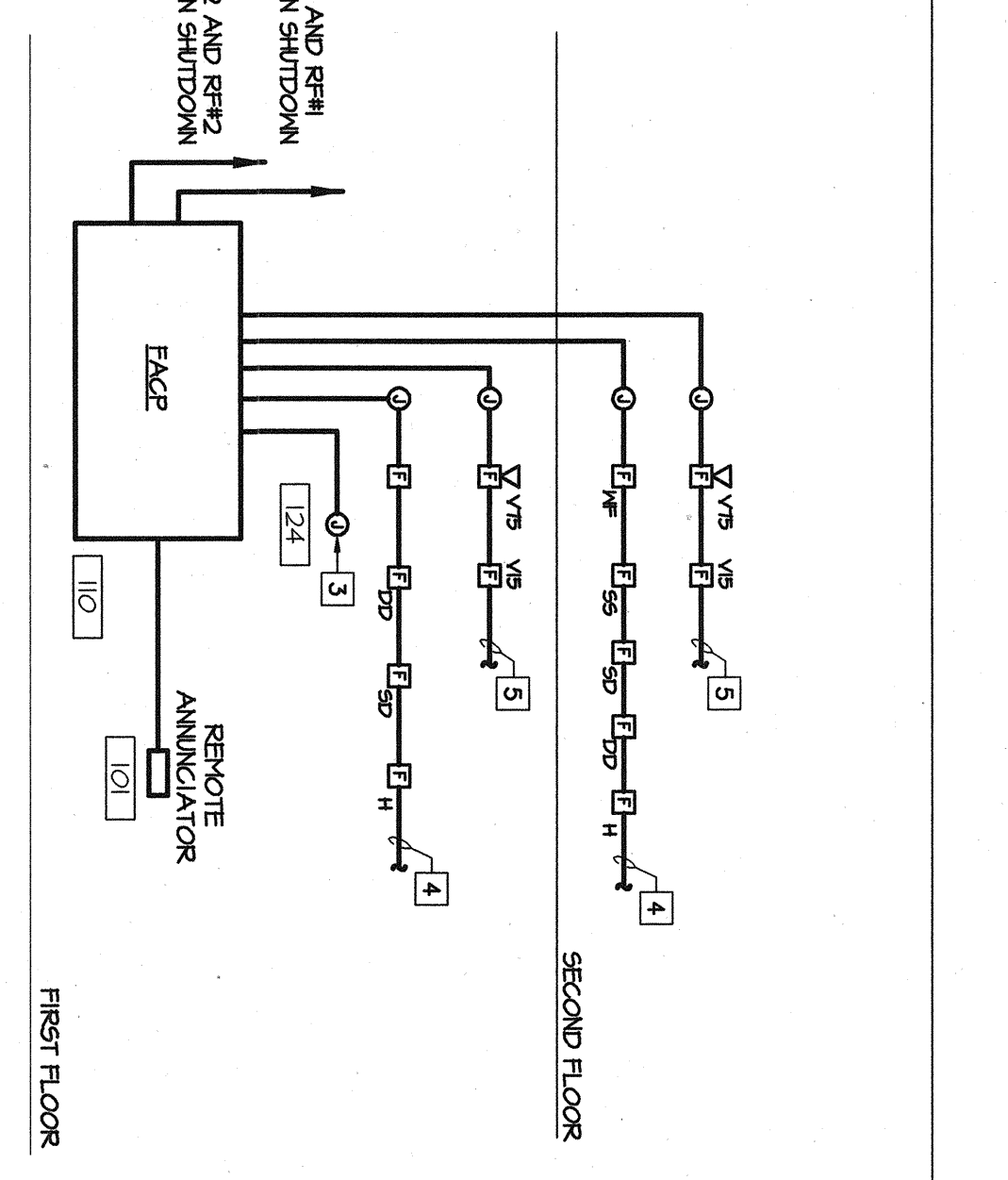
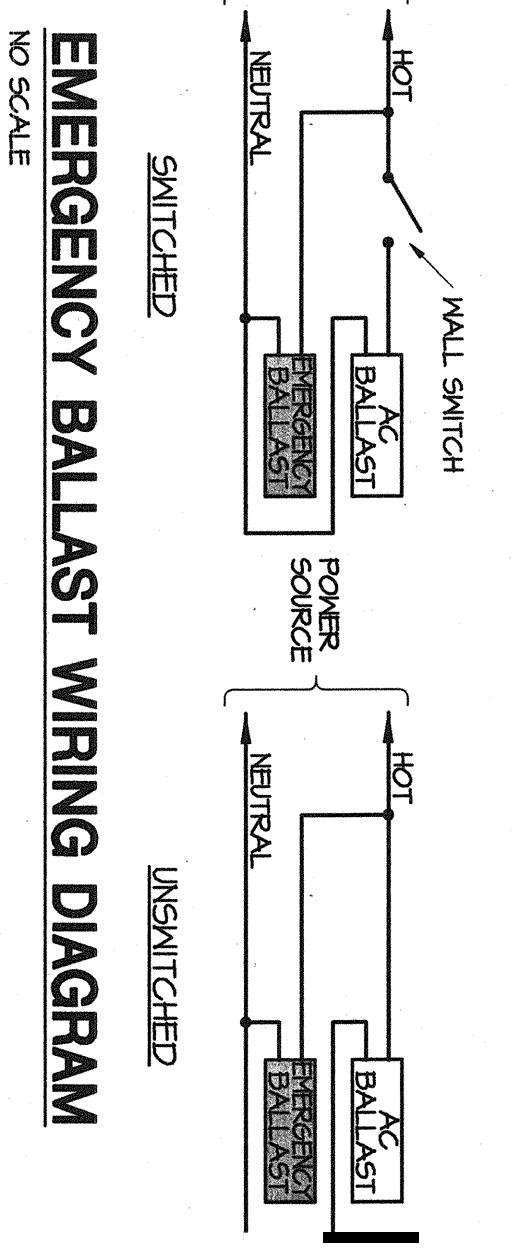


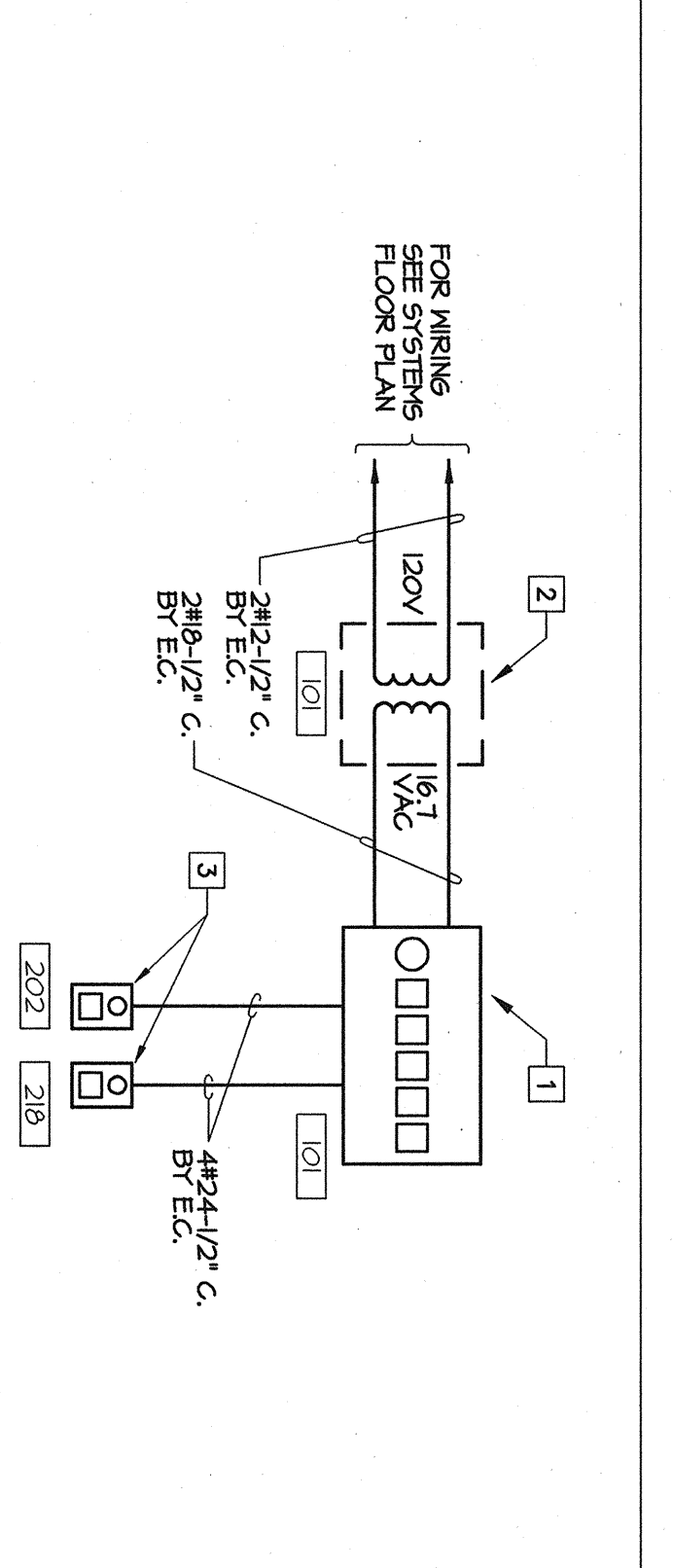
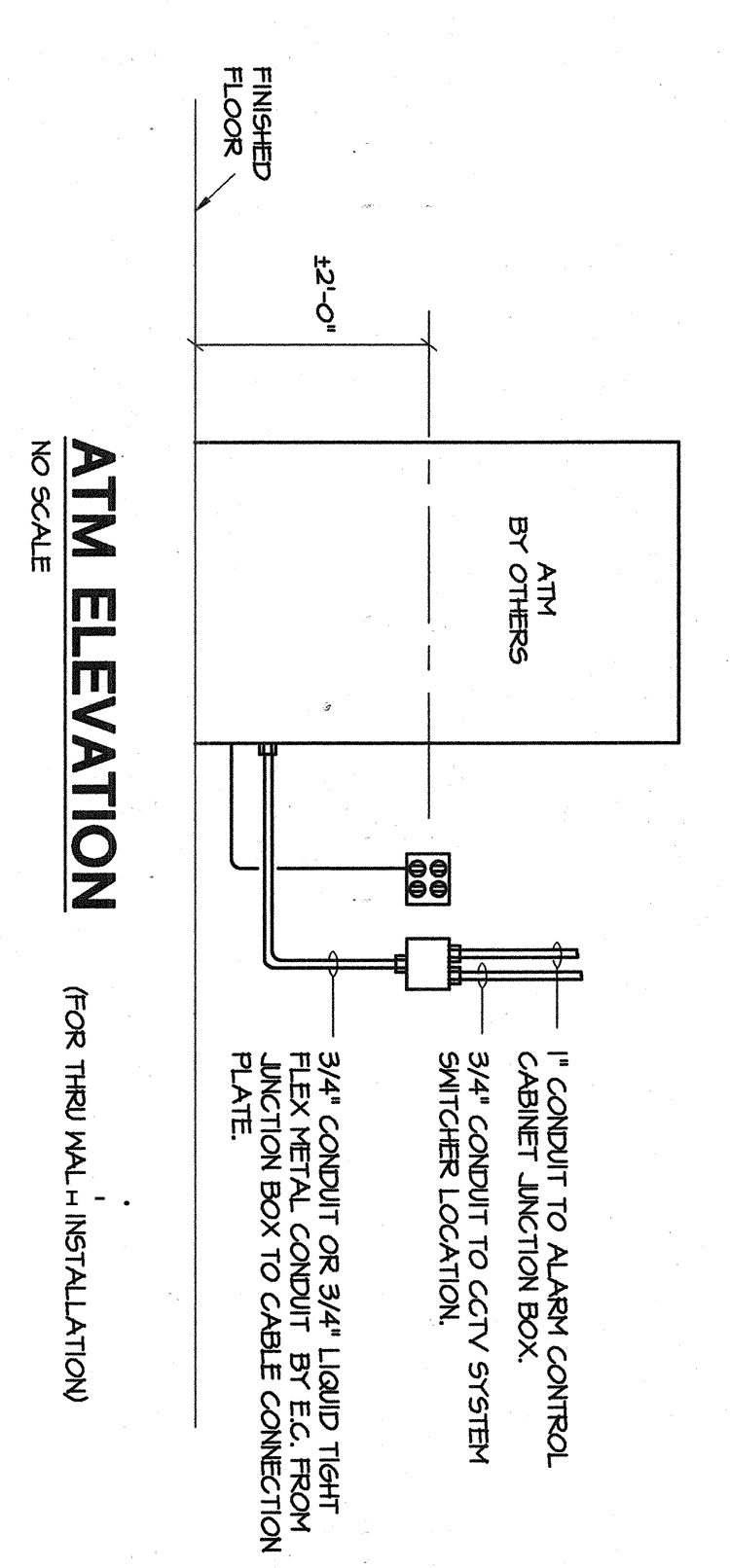
- NOTES
- A MANUAL MOTOR STARTER IN ENCLOSURE.
 - B THERMAL OVERLOAD.
 - C HAND-OFF-AUTO SELECTOR SWITCH IN SECOND GANG.
 - D RED PILOT LIGHT IN COVER IN SECOND GANG.
 - E AUXILIARY CONTACT IN STARTER OF CONTROLLING MOTOR OR RED PILOT LIGHT IN COVER IN SECOND GANG.
 - F DISCONNECT SWITCH AT MOTOR WAREHOUSE INDICATED ON DRAWING OR BY FAN MEN MOTOR IS ROOM FAN.



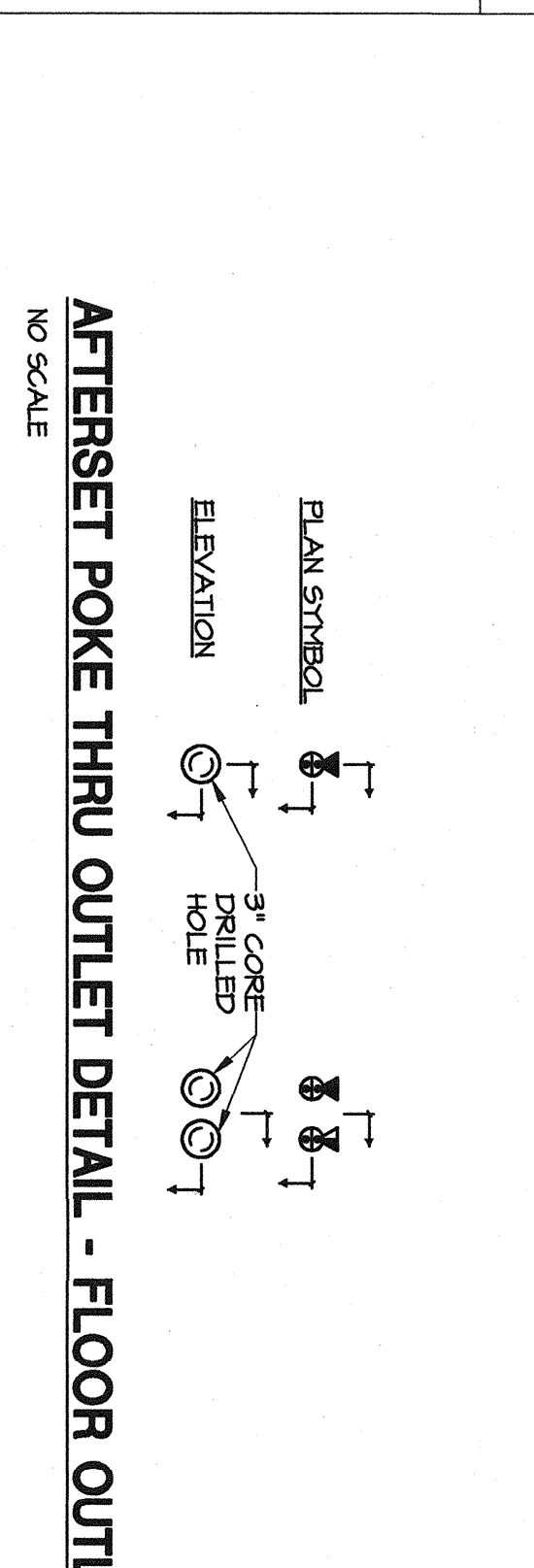
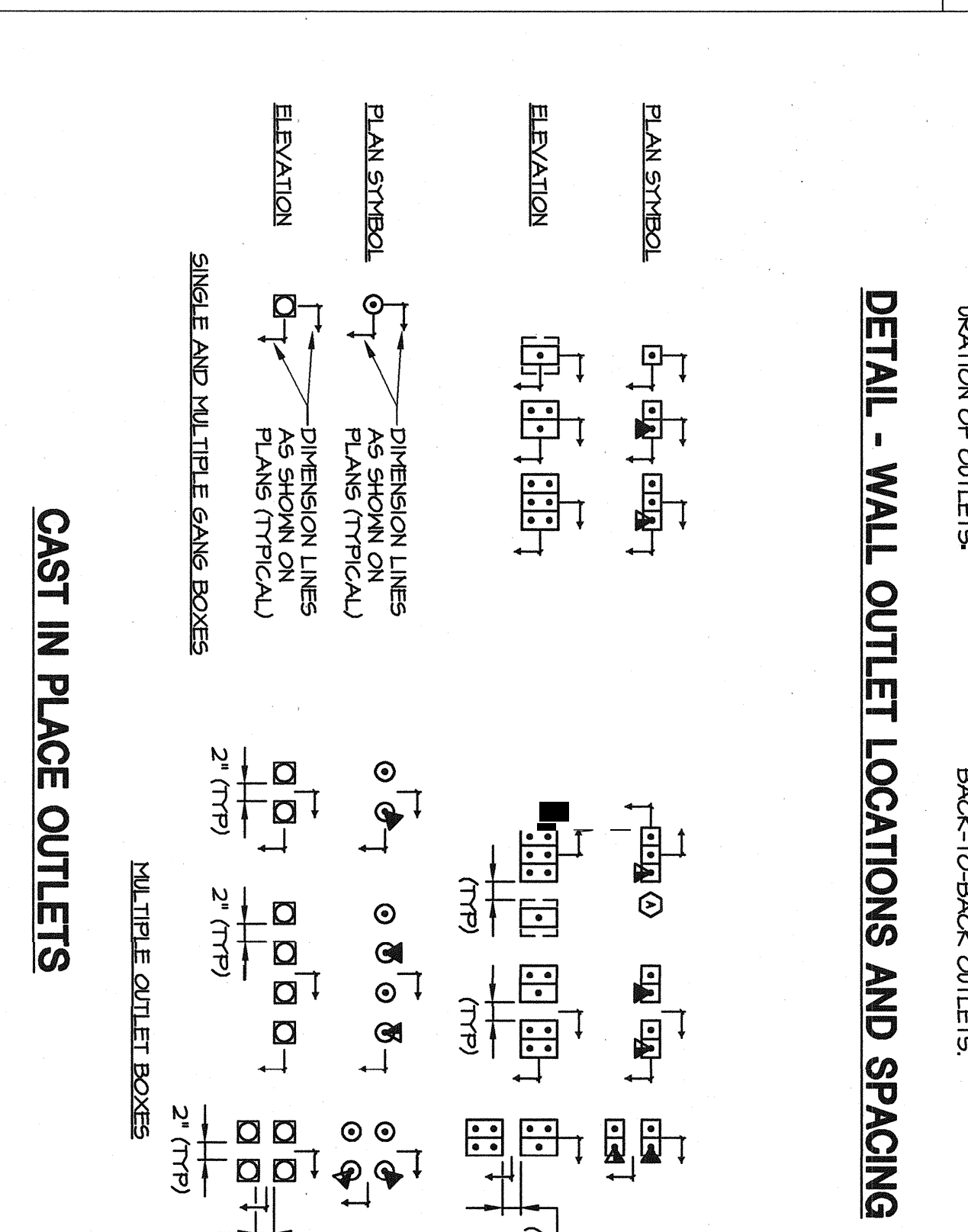
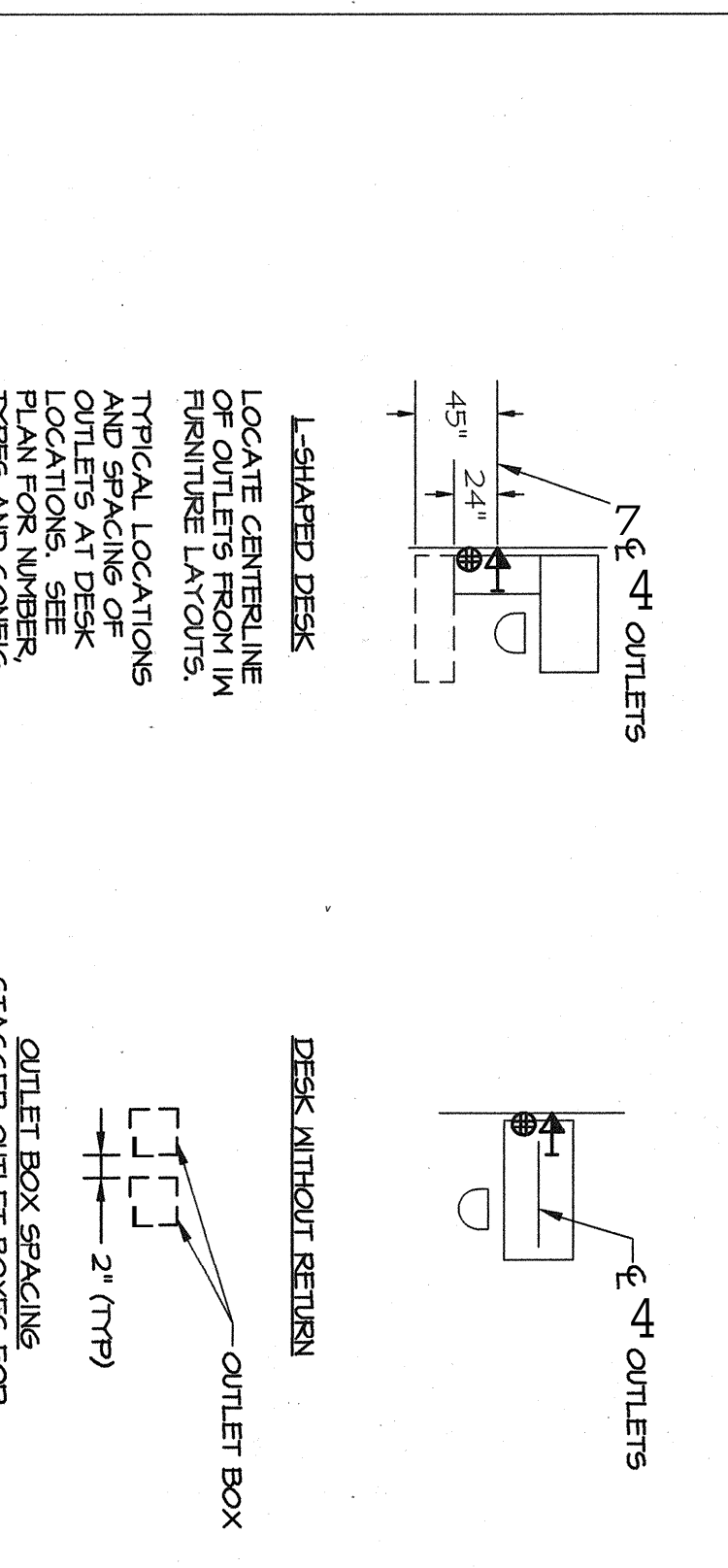
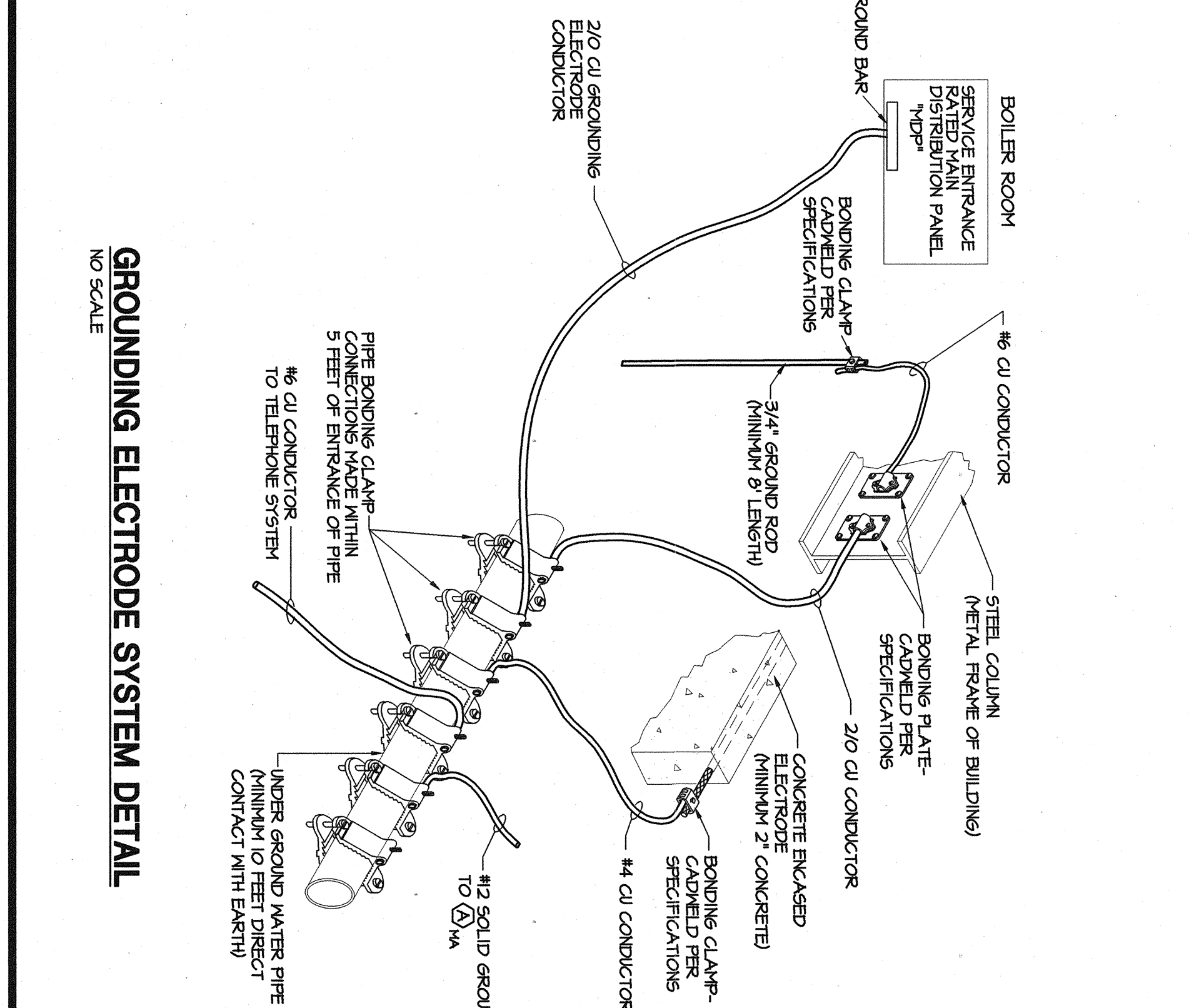
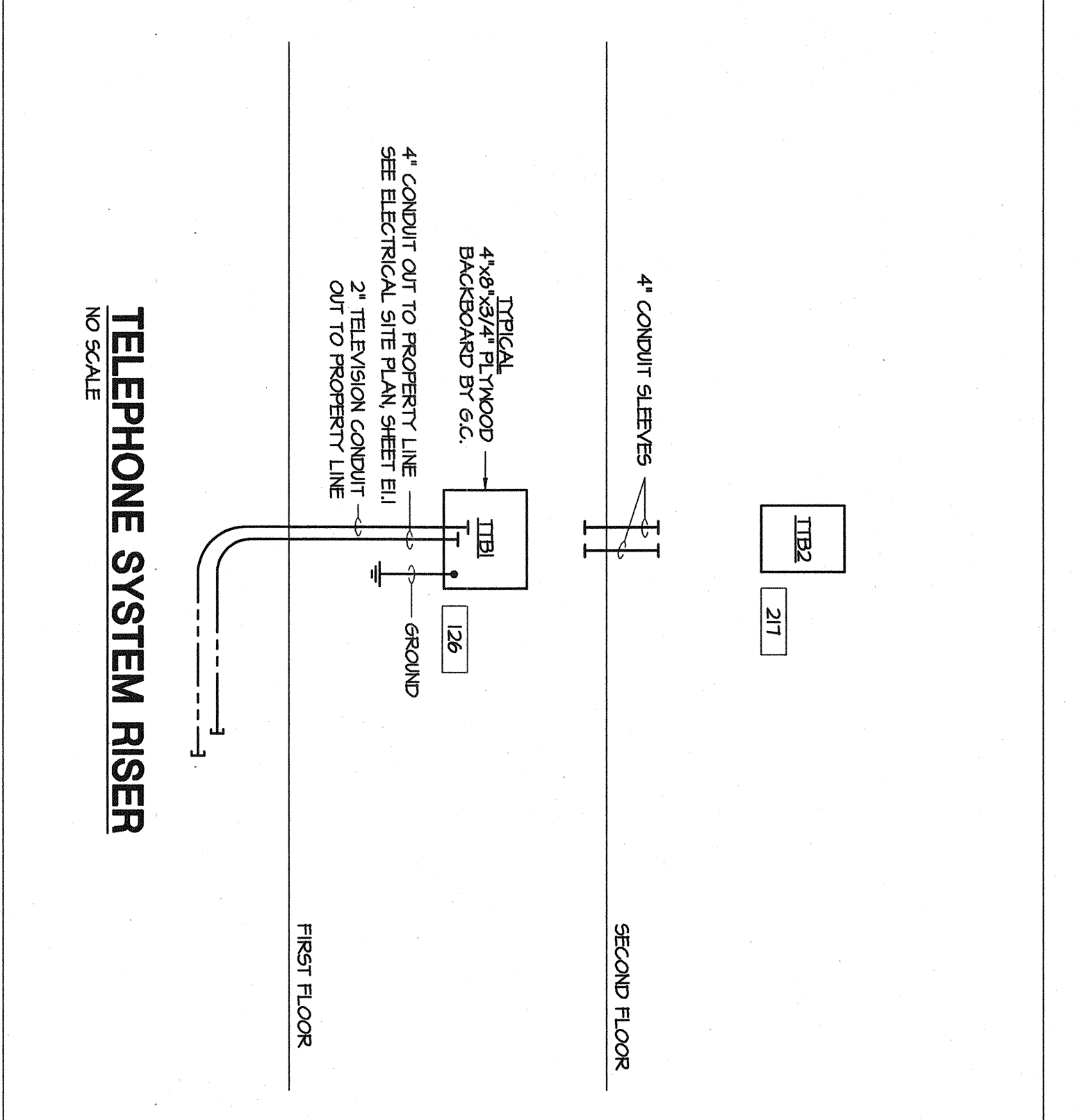
- NOTES
- A HAND-OFF-AUTO SELECTOR SWITCH IN STARTER COVER.
 - B OVERLOAD RELAY CONTACTS.
 - C STARTER OPERATING COIL - 120 VOLTS.
 - D RED PILOT LIGHT IN STARTER COVER.
 - E AUXILIARY CONTACT IN STARTER OF CONTROLLING MOTOR OR RED PILOT LIGHT IN STARTER COVER.
 - F DISCONNECT SWITCH AT MOTOR WAREHOUSE INDICATED ON DRAWING OR BY FAN MEN MOTOR IS ROOM FAN.
 - G INTERNAL MOTOR AS REQUIRED. SEE MOTOR AND CONTROL SCHEDULE.



- NOTES
1. SEE SPECIFICATIONS FOR DESCRIPTION OF FIRE ALARM SYSTEM COMPONENTS AND DEVICES. SEE PLAN DRAWINGS FOR LOCATION.
 2. REFER TO MANUFACTURERS RECOMMENDATIONS FOR WIRING.
 3. JUNCTION BOX IN ELEVATOR MACHINE ROOM.
 4. TO OTHER FIRE ALARM NOTIFICATION DEVICES AS SHOWN ON PLAN.
 5. TO OTHER FIRE ALARM NOTIFICATION DEVICES AS SHOWN ON PLAN.



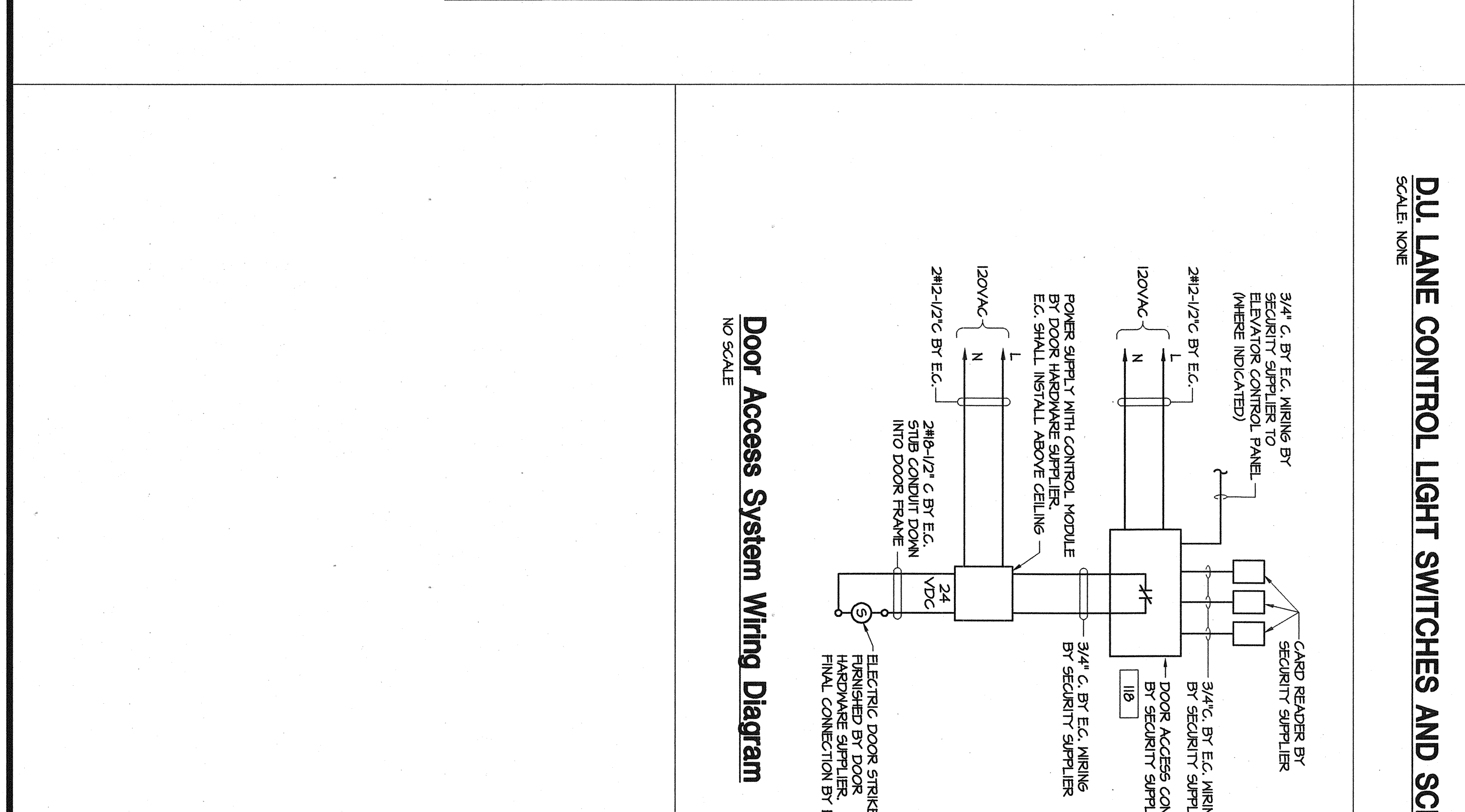
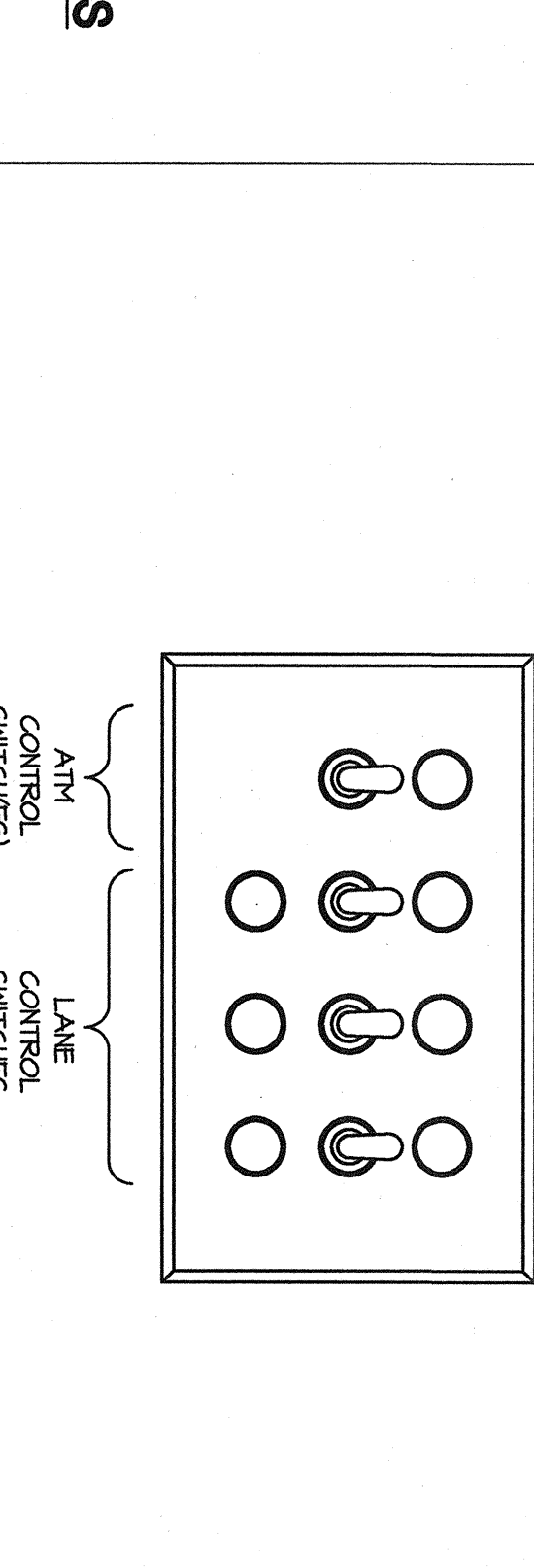
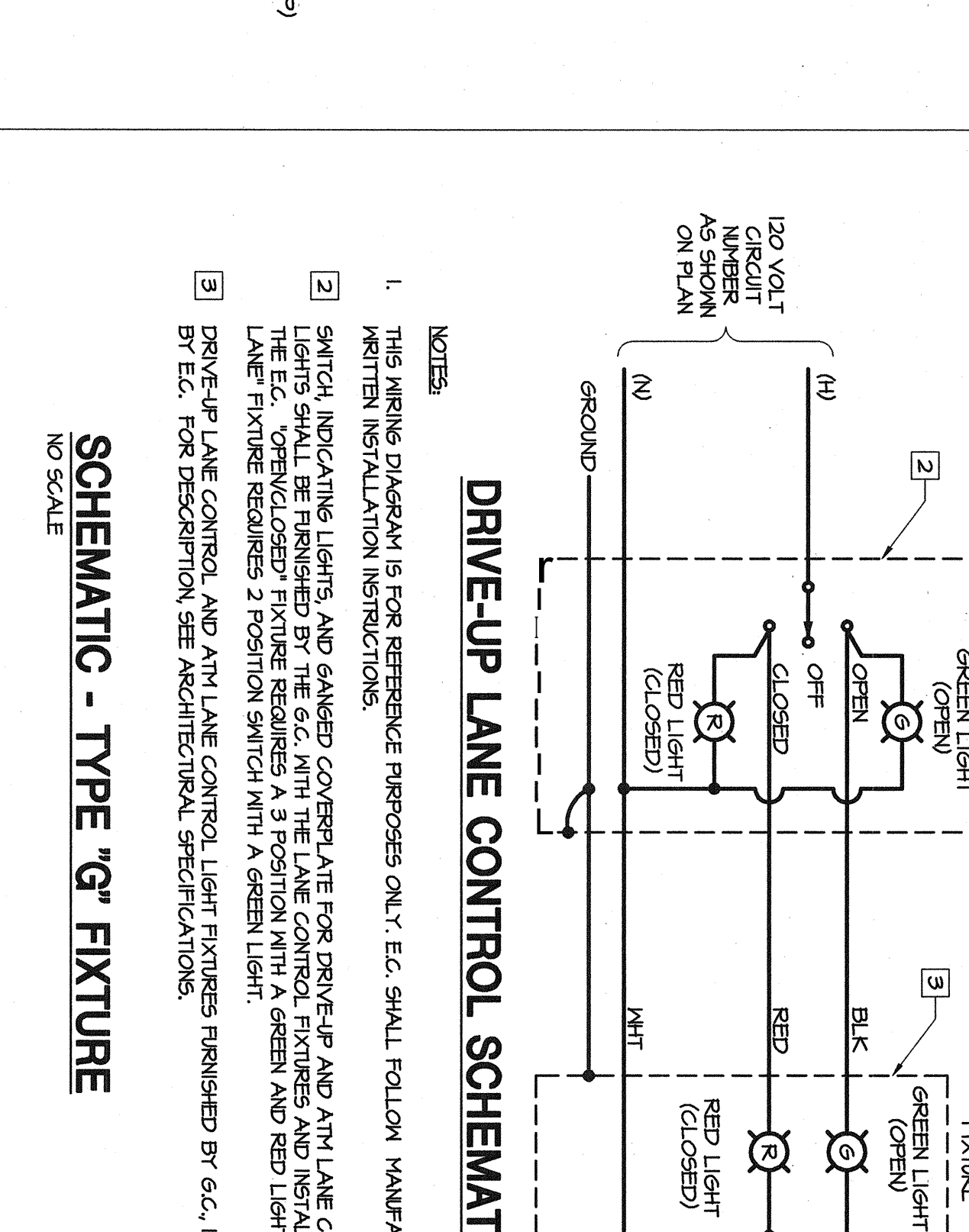
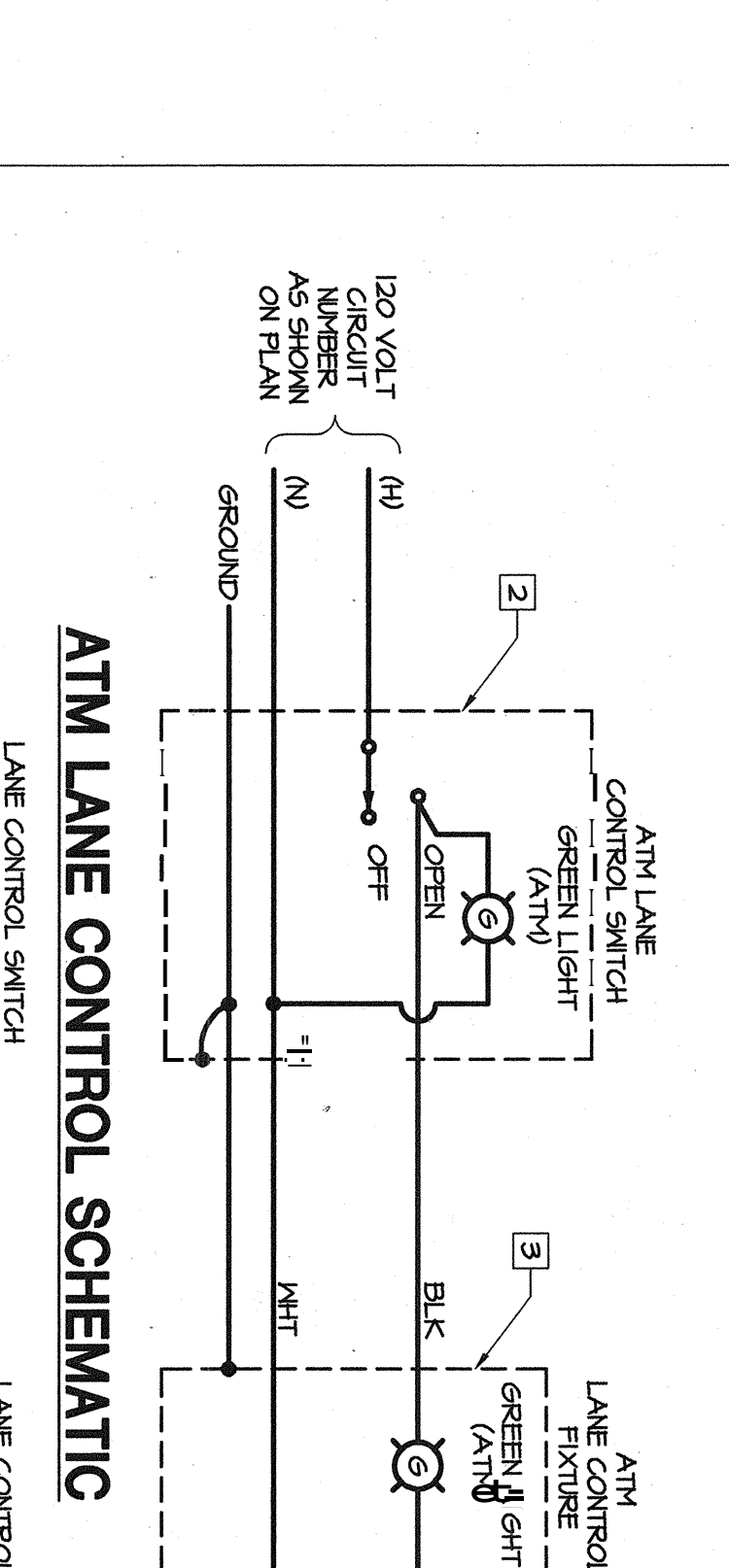
- AREA OF RESCUE WIRING DIAGRAM
- NO SCALE
1. AREA OF RESCUE ANNUNCIATOR PANEL. FOR DESCRIPTION SEE SPECIFICATIONS. FOR LOCATION SEE FIRST FLOOR SYSTEMS PLAN.
 2. AREA OF RESCUE TRANSFORMER AND POWER SUPPLY. FOR DESCRIPTION SEE SPECIFICATIONS. FOR LOCATION SEE FIRST FLOOR SYSTEMS PLAN.
 3. AREA OF RESCUE CALL STATION. FOR DESCRIPTION SEE SPECIFICATIONS. FOR LOCATION SEE SECOND FLOOR SYSTEMS PLAN.



TIME SWITCH OPERATING SCHEDULE

PANEL	TIME	OPERATES	THE ON	THE OFF	MULTIPLES
UA	430	1	1	12:00PM	3
430	2	SITE LIGHTING - GENERAL	DKK	12:00PM	
430	3	FLOOR LIGHT/BLDG LOGO	DKK	12:00PM	3
430	4	FLOOR LIGHT/BLDG LOGO	DKK	12:00PM	3
430	5	SITE LIGHTING - GENERAL	DKK	12:00PM	3
430	6	SITE LIGHTING - GENERAL	DKK	12:00PM	3
430	7	SITE SIGN	DAWN	12:00PM	
430	8	EXTERIOR WALL PACKS	DAWN	12:00PM	
350	9	FRONT ENTRANCE LIGHTING	DAWN	12:00PM	
350	10	5 STAR 42 EXIT LIGHTING	DAWN	12:00PM	
350	11	FRONT ENTRANCE LIGHTING	DAWN	12:00PM	
350	12	FRONT ENTRANCE LIGHTING	DAWN	12:00PM	
350	13	DRIVE-UP CANOPY LIGHTING	DAWN	12:00PM	
350	14	DRIVE-UP CANOPY LIGHTING	DAWN	12:00PM	
350	15	DRIVE-UP CANOPY LIGHTING	DAWN	12:00PM	
350	16	DRIVE-UP CANOPY LIGHTING	DAWN	12:00PM	

- NOTES
1. TIME ON AND TIME OFF SETTINGS SHOWN ARE INITIAL SUGGESTED TIMES. FINAL SETTINGS SHALL BE DETERMINED BY THE OWNER AT THE TIME OF INSTALLATION. E.C. SHALL BE INITIALLY RESPONSIBLE FOR SETTING ON/OFF TIMES.
 2. E.C. SHALL CONNECT LOAD CONDUCTORS TO THE NORMALLY OPEN AND COMMON TERMINAL POINTS OF THE APPROPRIATE LOAD SWITCH.
 3. THESE LOAD CONTROL CONTACTS SHALL BE SWITCHED SIMULTANEOUSLY TO PROVIDE EFFECTIVELY A TWO POLE LOAD CAPABILITY.



Miscellaneous Details

6/FW13044TE/E3-2 MISCELLANEOUS DETAILS.dwg hbs202

BDR - 02-05-04 @ 15:34

REGISTERED ARCHITECT
 MICHAEL A. ANNUNZIATA
 STATE OF MAINE

REGISTERED ARCHITECT
 RONALD L. HOLLANDER
 STATE OF MAINE

Frederick S. Scott, Architect
 Ronald L. Hollander, Architect

11330 Olive Boulevard, St. Louis, Missouri 63141 (314) 567-9000

Construction By
 HBE Financial Facilities
 A Division of HBE Corporation, 11330 Olive Boulevard, St. Louis, Missouri 63141, Phone (314) 567-9000

A New Building for
EVERGREEN CREDIT UNION
 Portland, Maine

REGISTERED ARCHITECT
 FREDERICK S. SCOTT
 STATE OF MAINE

REGISTERED ARCHITECT
 RONALD L. HOLLANDER
 STATE OF MAINE

Sheet No. 4 of 4
 DKA LE GSA
E3.2