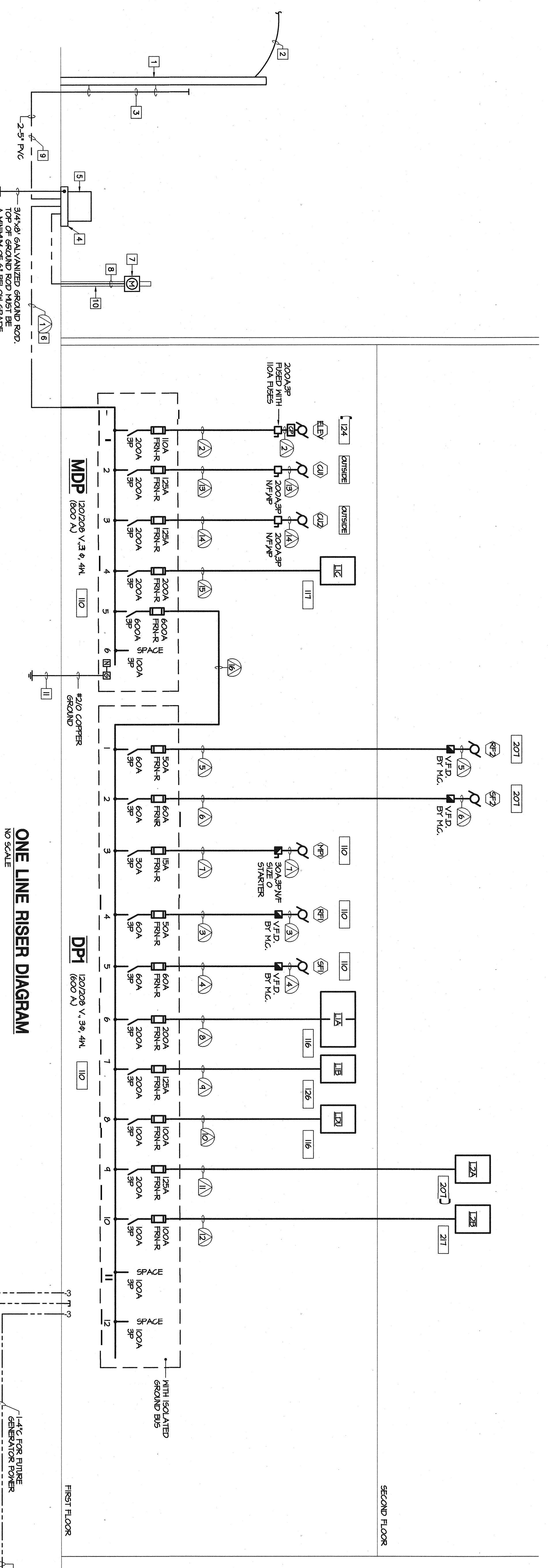


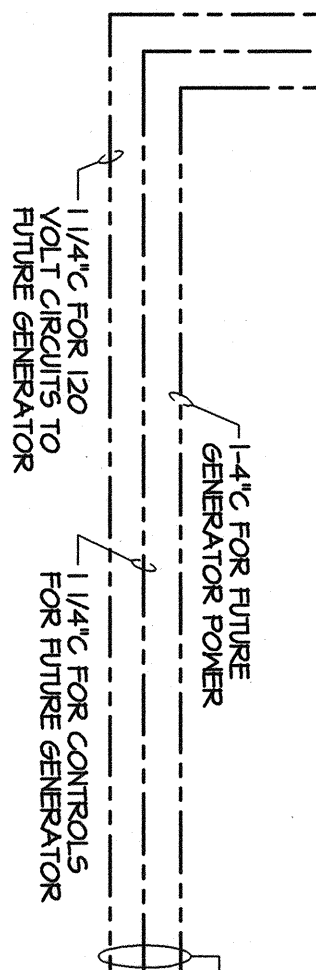
FEEDER SCHEDULE

| FEEDER NO. | COPPER CONDUCTORS | | | REMARKS |
|------------|-------------------|---------|--------|---------|
| | PHASE | NEUTRAL | GROUND | |
| (A) 1 | 2 | 2 | 2 | |
| (A) 2 | 2 | 2 | 2 | |
| (A) 3 | 2 | 2 | 2 | |
| (A) 4 | 2 | 2 | 2 | |
| (A) 5 | 2 | 2 | 2 | |
| (A) 6 | 2 | 2 | 2 | |
| (A) 7 | 2 | 2 | 2 | |
| (A) 8 | 2 | 2 | 2 | |
| (A) 9 | 2 | 2 | 2 | |
| (A) 10 | 2 | 2 | 2 | |
| (A) 11 | 2 | 2 | 2 | |
| (A) 12 | 2 | 2 | 2 | |
| (A) 13 | 2 | 2 | 2 | |
| (A) 14 | 2 | 2 | 2 | |
| (A) 15 | 2 | 2 | 2 | |
| (A) 16 | 2 | 2 | 2 | |
| (A) 17 | 2 | 2 | 2 | |
| (A) 18 | 2 | 2 | 2 | |
| (A) 19 | 2 | 2 | 2 | |
| (A) 20 | 2 | 2 | 2 | |

- NOTES:**
- 1 NEW (OR RELOCATED) POWER POLE TO BE FINISHED AND INSTALLED BY THE ELECTRIC UTILITY COMPANY. FOR LOCATION, SEE SITE PLAN SHEET E11.
 - 2 NEW OVERHEAD ELECTRIC LINE TO BE FINISHED AND INSTALLED BY THE ELECTRIC UTILITY COMPANY.
 - 3 EC TO FINISH AND INSTALL TWO 57' CONDUIT RISERS (1/2" PIPE) OR AS DIRECTED BY ELECTRIC UTILITY COMPANY. PROVIDE WITH STEEL ELBOWS AS REQUIRED BY THE ELECTRIC UTILITY COMPANY.
 - 4 NEW CONCRETE PAD BY G.C. FOR PAD MOUNTED TRANSFORMER.
 - 5 NEW PAD MOUNTED TRANSFORMER WITH VETERBINS C1A TO BE FINISHED AND INSTALLED BY THE ELECTRIC UTILITY COMPANY.
 - 6 NEW INTERGROUND SECONDARY ELECTRIC SERVICE BY THE E.C. SIZED AS SHOWN. FOR ROUTING, SEE SITE PLAN SHEET E11.
 - 7 ELECTRIC WETTER AND ENCLOSURE, WETTER ENCLOSURE FINISHED AND INSTALLED BY THE ELECTRIC UTILITY COMPANY. FOR LOCATION, SEE SITE PLAN SHEET E11.
 - 8 1/4" CONDUIT FINISHED AND INSTALLED BY THE E.C. FOR VETERBINS. VETERBINS WILL BE FINISHED AND INSTALLED BY THE ELECTRIC UTILITY COMPANY.
 - 9 NEW INTERGROUND PRIMARY ELECTRIC SERVICE FINISHED AND INSTALLED BY THE ELECTRIC UTILITY COMPANY. CONDUITS BY E.C. FOR ROUTING, SEE SITE PLAN SHEET E11.
 - 10 4x4x SQUARE POST FINISHED AND INSTALLED BY THE E.C. FOR MOUNTING OF THE ELECTRIC METER. COORDINATE WITH THE ELECTRIC UTILITY COMPANY. FOR LOCATION, SEE SITE PLAN SHEET E11.
 - 11 COPPER GROUND SIZES AS REQUIRED. (MINIMUM SIZE AS SHOWN) AND INSTALLED IN ACCORDANCE WITH SECTION 250 OF THE NATIONAL ELECTRIC CODE. SEE GROUNDING ELECTRODE SYSTEM DETAIL SHEET E32.
 - 12 FINISH AND INSTALL THREE 8" RHT CONDUITS, SIZED AS SHOWN FOR FUTURE USE. FOR LOCATION, SEE SITE PLAN SHEET E11.



ONE LINE RISER DIAGRAM
NO SCALE



The design of this project is a service of HBE Corporation and shall remain the property of HBE Corporation. No part of this design shall be reproduced or transmitted in any form or by any means, electronic or mechanical, including photocopying, recording, or by any information storage and retrieval system, without the express written consent of HBE Corporation. HBE Corporation is not responsible for any errors or omissions in this design. HBE Corporation is not responsible for any damage or injury resulting from the use of this design. HBE Corporation is not responsible for any claims or liabilities arising from the use of this design. HBE Corporation is not responsible for any claims or liabilities arising from the use of this design. HBE Corporation is not responsible for any claims or liabilities arising from the use of this design.

One Line Riser Diagram
Rev. 2-4-04

Frederick S. Scott, Architect
Ronald L. Hollander, Architect
 11330 Olive Boulevard, St. Louis, Missouri 63141 (314) 567-9000

Construction By
HBE Financial Facilities
 A Division of HBE Corporation, 11330 Olive Boulevard, St. Louis, Missouri 63141 Phone (314) 567-9000

A New Building for
EVERGREEN CREDIT UNION
 Portland, Maine