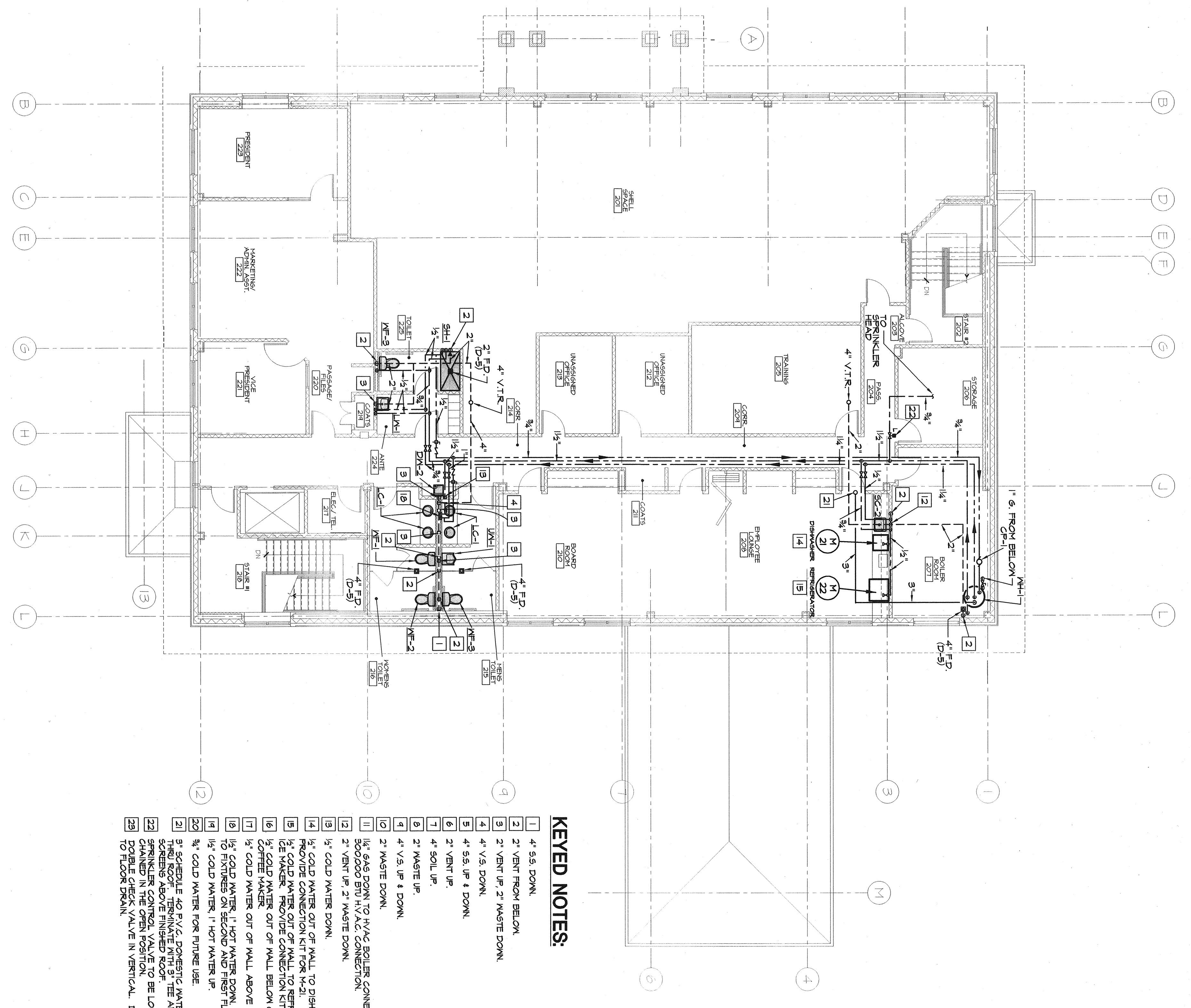


SECOND FLOOR PLAN  
SCALE: 1/8" = 1'-0"



KEYED NOTES:

- 1 4" S.S. DOWN
- 2 2" VENT FROM BELOW
- 3 2" VENT UP, 2" WASTE DOWN
- 4 4" V.S. DOWN
- 5 4" S.S. UP 1 DOWN
- 6 2" VENT UP
- 7 4" SOIL UP
- 8 2" WASTE UP
- 9 4" V.S. UP 1 DOWN
- 10 2" WASTE DOWN
- 11 1/2" COLD WATER TO H.V.E. SILENCE CONNECTION
- 12 1/2" COLD WATER DOWN
- 13 1/2" COLD WATER DOWN
- 14 1/2" COLD WATER OUT OF MALL TO DISHWASHER
- 15 PROVIDE CONNECTION KIT FOR W-2
- 16 1/2" COLD WATER OUT OF MALL TO REFRIGERATOR
- 17 1/2" COLD WATER OUT OF MALL BELOW COUNTER TO
- 18 1/2" COLD WATER OUT OF MALL ABOVE COUNTER
- 19 1/2" COLD WATER, 1" HOT WATER DOWN, BRANCH IN CHASE TO FIXTURES ON SECOND AND FIRST FLOOR.
- 20 1/2" COLD WATER, 1" HOT WATER UP
- 21 3/4" SCHEDULE 40 F.V.C. DOMESTIC WATER HEATER FLEE
- 22 3/4" SCHEDULE 40 F.V.C. DOMESTIC WATER HEATER FLEE
- 23 3/4" SCHEDULE 40 F.V.C. DOMESTIC WATER HEATER FLEE
- 24 SPRINKLER CONTROL VALVE TO BE LOCKED AND
- 25 CHAINED IN THE OPEN POSITION.
- 26 1/2" COLD WATER, 1" HOT WATER UP
- 27 1/2" COLD WATER, 1" HOT WATER UP
- 28 1/2" COLD WATER, 1" HOT WATER UP

FIRST FLOOR PLAN  
SCALE: 1/8" = 1'-0"



First & Second Floor Plan

6:\P\30417\pfp11-30411.dwg HBE6602  
BDR AB6FF2AB6FF1JH-FURN2-JH-FURN, 02-04-04 @ 15:03

**PFP11**

**Frederick S. Scott, Architect**

**Ronald L. Hollander, Architect**

Construction By  
**HBE Financial Facilities**  
 A Division of HBE Corporation, 11330 Olive Boulevard, St. Louis, Missouri 63141, Phone (314) 567-9000

A New Building for  
**EVERGREEN CREDIT UNION**  
 Portland, Maine