

KEYED NOTES:

- 1 STATIC PRESSURE SENSOR
- 2 BUILDING SPACE PRESSURIZATION SENSOR LOCATED ABOVE CEILING, EXTEND SENSOR PROBE TO A POINT JUST BELOW FINISHED CEILING.
- 3 10X10 THRU ROOF TO EF-4

MOUNT ALL THERMOSTATS 4'-0" ABOVE FINISH FLOOR TO CENTERLINE; COORDINATE WITH ADJACENT ELECTRICAL DEVICES.

DUCT SIZES SHOWN ON DRAWINGS ARE UNLINED SIZES AND SHALL BE INCREASED ACCORDINGLY TO ACCOMMODATE LINING WHEN SPECIFIED. SEE "INSULATION" SECTION OF THE SPECIFICATIONS FOR LINER APPLICATION, TYPE AND THICKNESS. LINERS IS NOT PERMITTED UNLESS SHOWN ON DRAWINGS OR SPECIFIED.

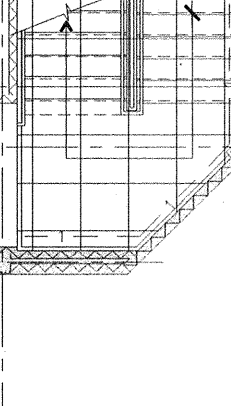
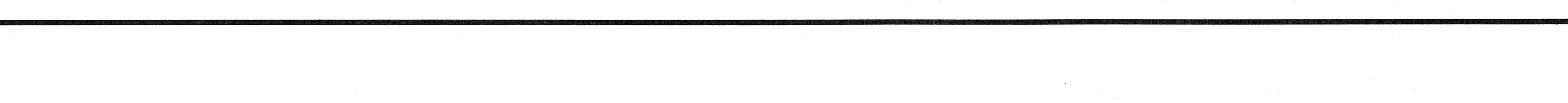
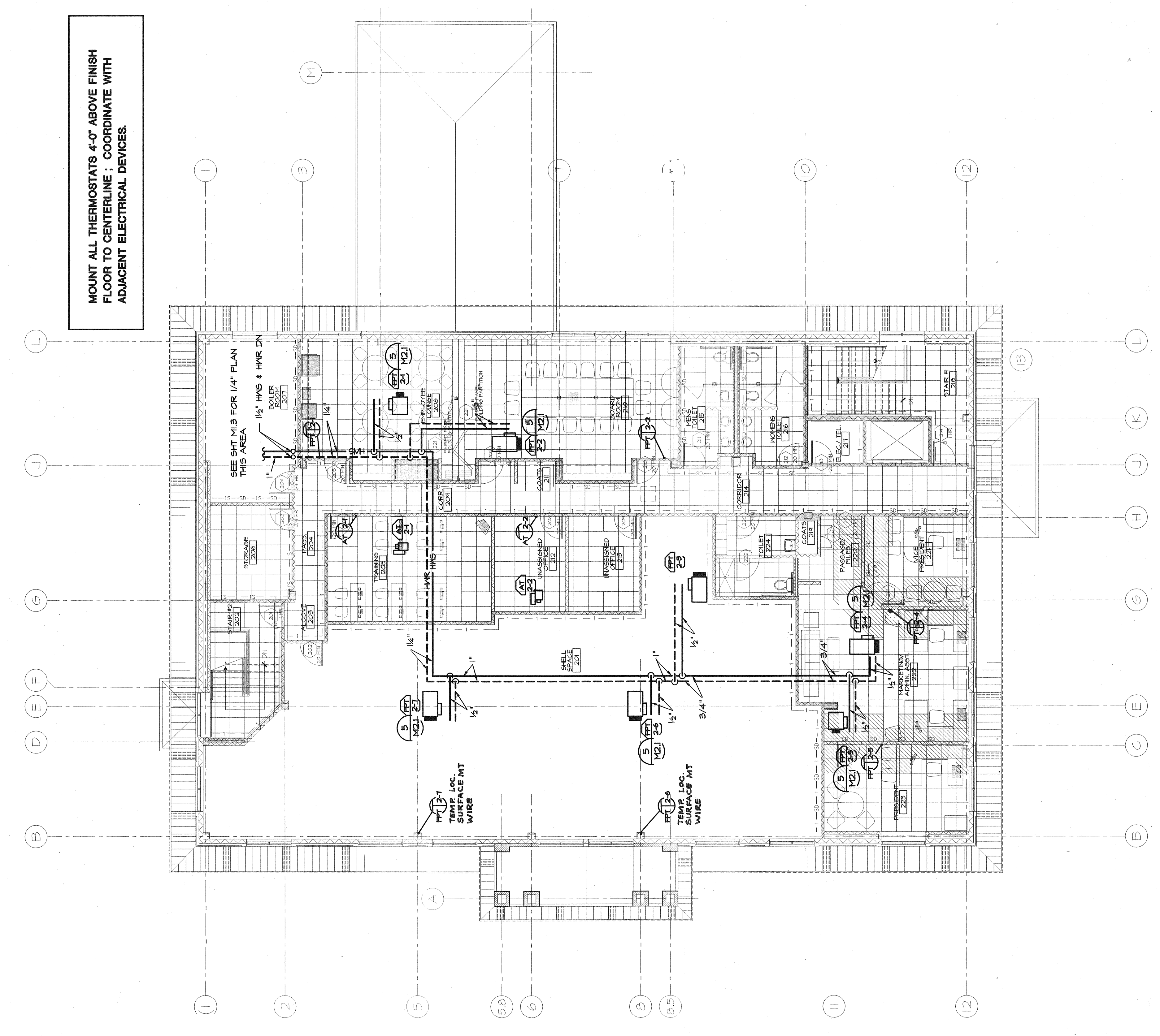
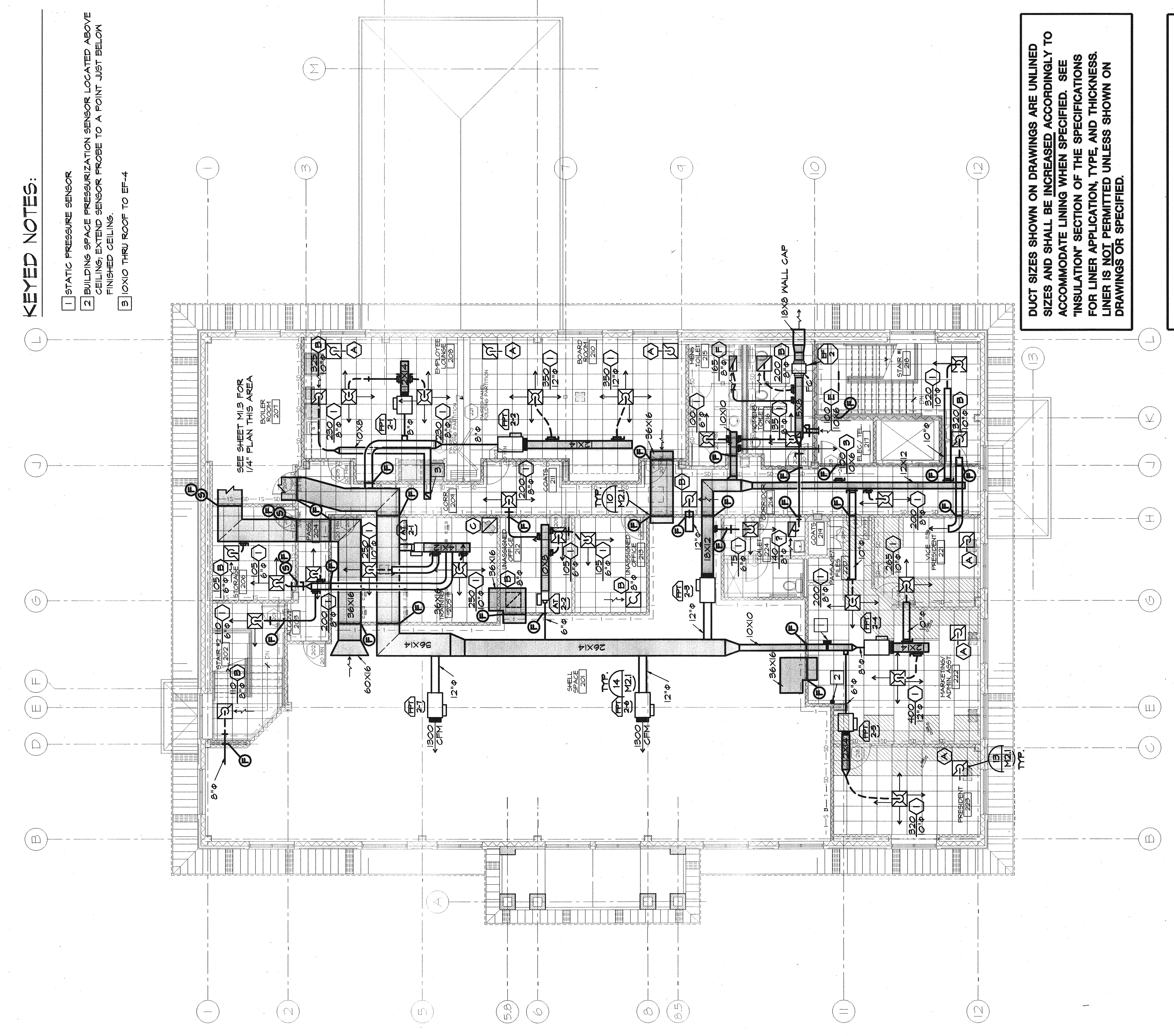
WHEN SUBSTITUTING FOR THE SPECIFIED, SCHEDULED EQUIPMENT, THE MECHANICAL CONTRACTOR SHALL BE RESPONSIBLE FOR ALL PHYSICAL AND COST REVISIONS, AND COORDINATION WITH ALL TRADES. SEE SPECIFICATION SECTION 16.1 "SUBSTITUTION FOR SPECIFIED MATERIALS"

SEE SHEET M1.3 FOR 1/4" PLAN THIS AREA

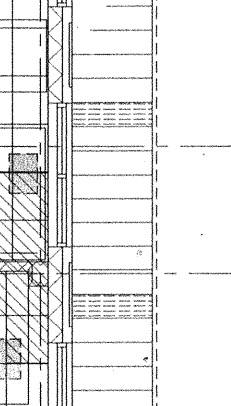
SEE SHEET M1.3 FOR 1/4" PLAN THIS AREA

SEE SHEET M1.3 FOR 1/4" PLAN THIS AREA

SEE SHEET M1.3 FOR 1/4" PLAN THIS AREA



SECOND FLOOR PLAN - DUCTWORK
SCALE 1/8" = 1'-0"



SECOND FLOOR PLAN - PIPING
SCALE 1/8" = 1'-0"