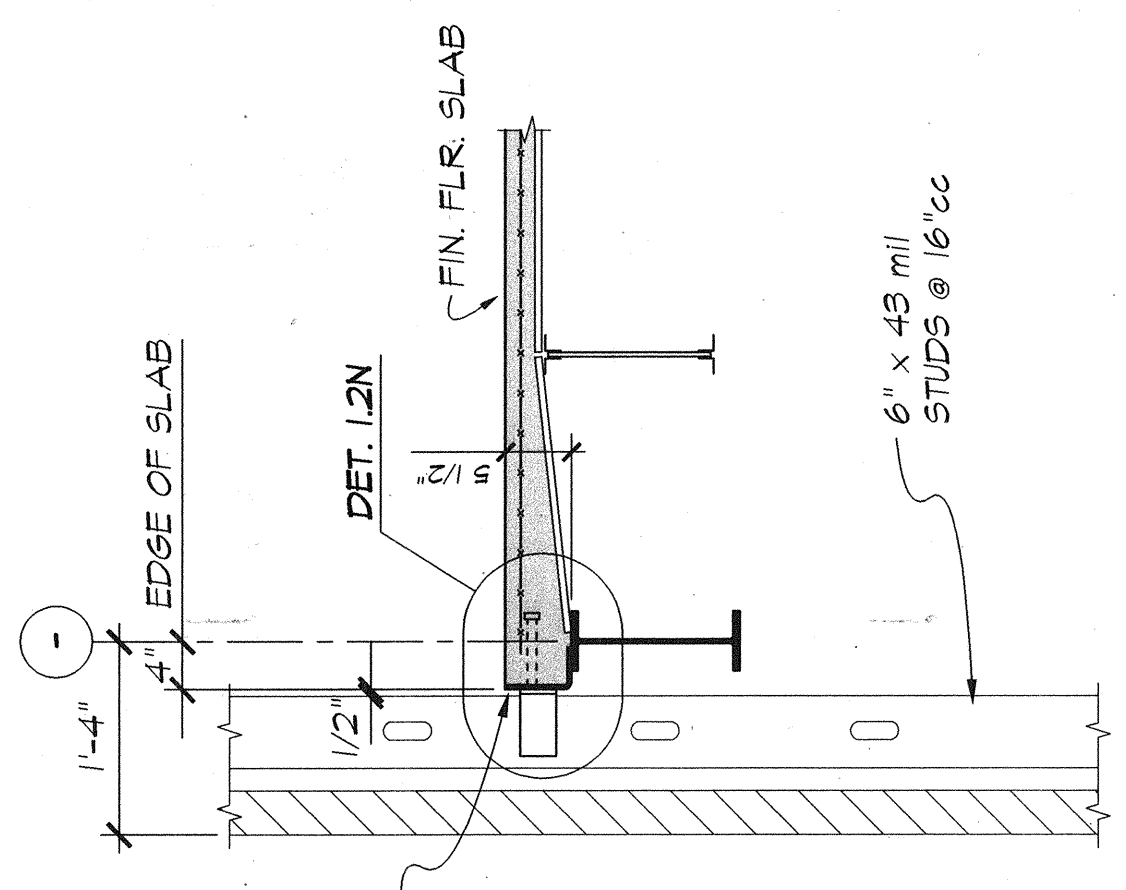
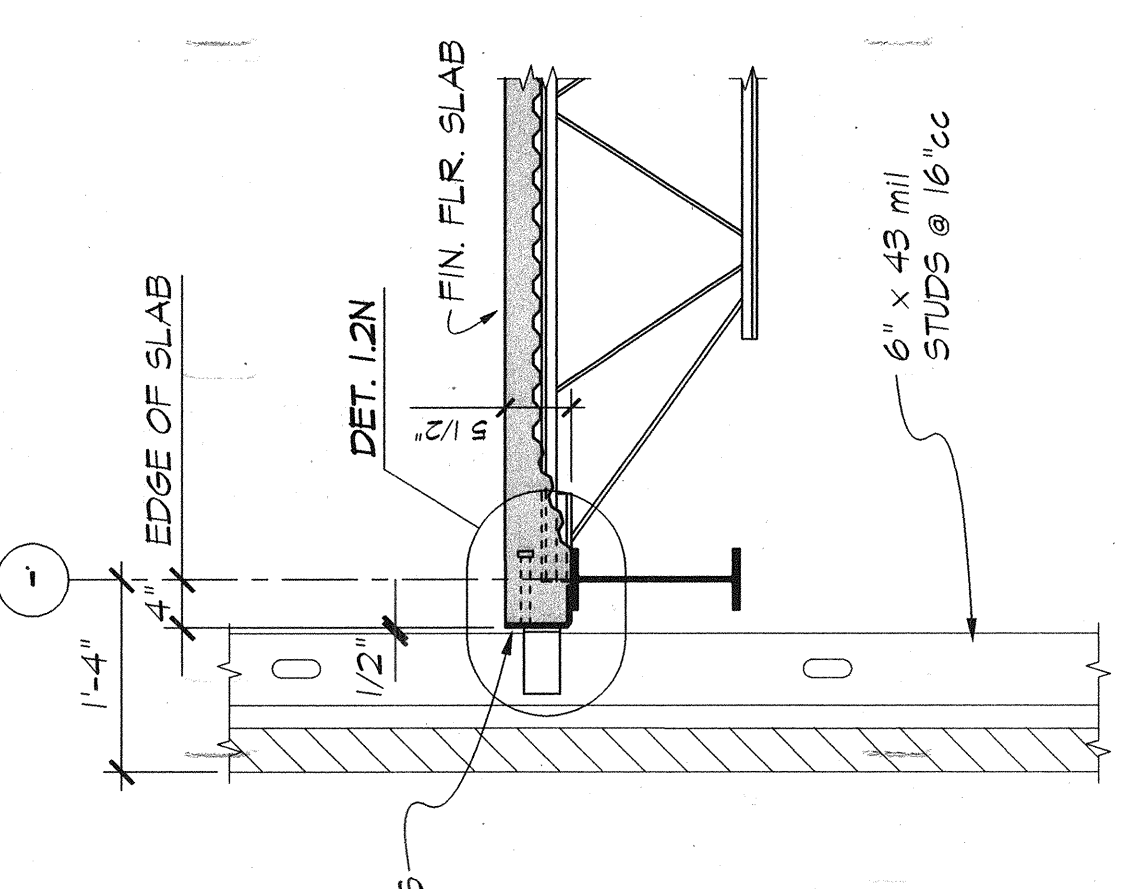


SECOND FLOOR FRAMING PLAN
1/8" = 1'-0"

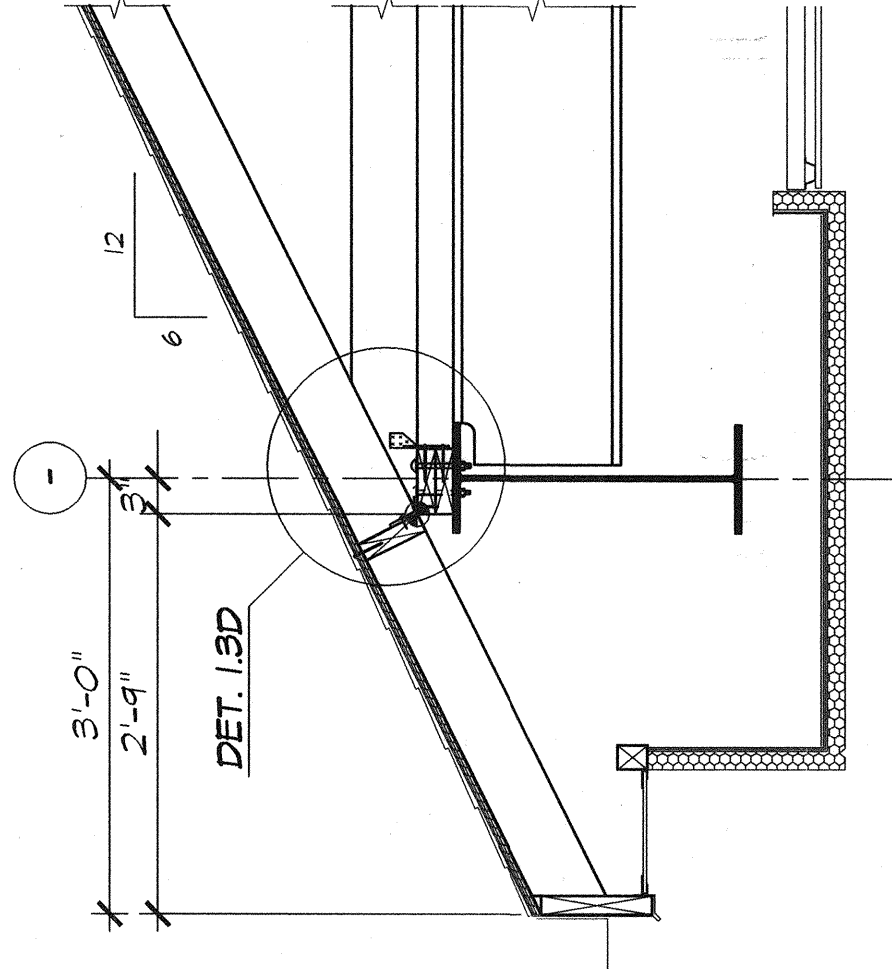
- 1. UNLESS NOTED OTHERWISE, FINISHED SECOND FLOOR SLAB EL. 81'-4"
- 2. FLOOR CONST. -- 9" CONC. SLAB OVER 23 Gg. FORM DECK REINFORCED W/ 6x6-M2.9 x M2.9 WWF
- 3. TOP OF STEEL BEAMS EL. -- 80'-10 1/2" UNLESS REFERENCED TO IS (+/- 0')
- 4. ALL JOIST SPACINGS ARE 2'-0" UNO. FINISH JOIST SUBSTITUTES AS REQUIRED.
- 5. Δ INDICATES JOISTS THAT ARE TO COMPLY WITH CURRENT OSHA REGULATIONS PERTAINING TO STUCCO JOISTS AT COLUMNS.
- 6. GENERAL NOTES AND TYPICAL DETAILS SEE SHEET S11, S12 AND S13
- 7. VERTICAL BRACING ELEVATIONS AND DETAILS -- 56.1
- 8. COLUMN SPACINGS -- 56.1
- 9. STEEL STAIR CONSTRUCTION SEE ARCHITECTURAL DRAWINGS.
- 10. * COORDINATE THE SIZE AND LOCATION OF OPENINGS WITH THE MECHANICAL CONTRACTOR.
- 11. THE MECHANICAL CONTRACTOR SHALL INDICATE THE NUMBER OF END WELDED STUDS EQUALLY SPACED AS SHOWN ON VERTICAL BRACE ELEVATION 56.1



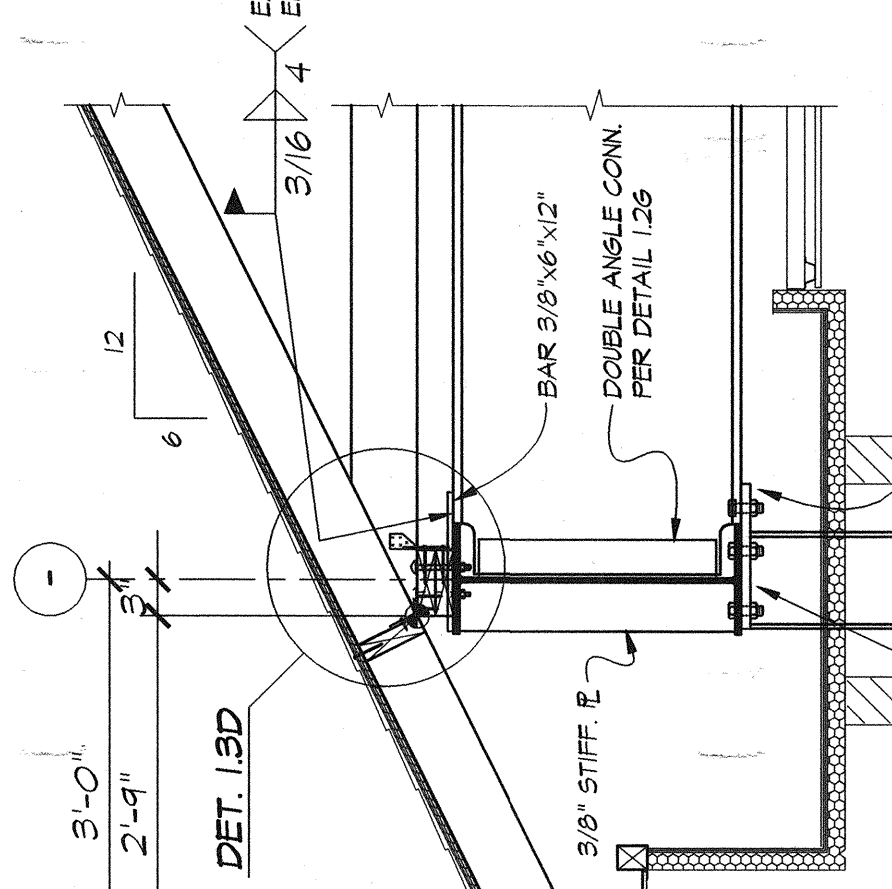
SECTION 3.1A / 53.1
3/4" = 1'-0"



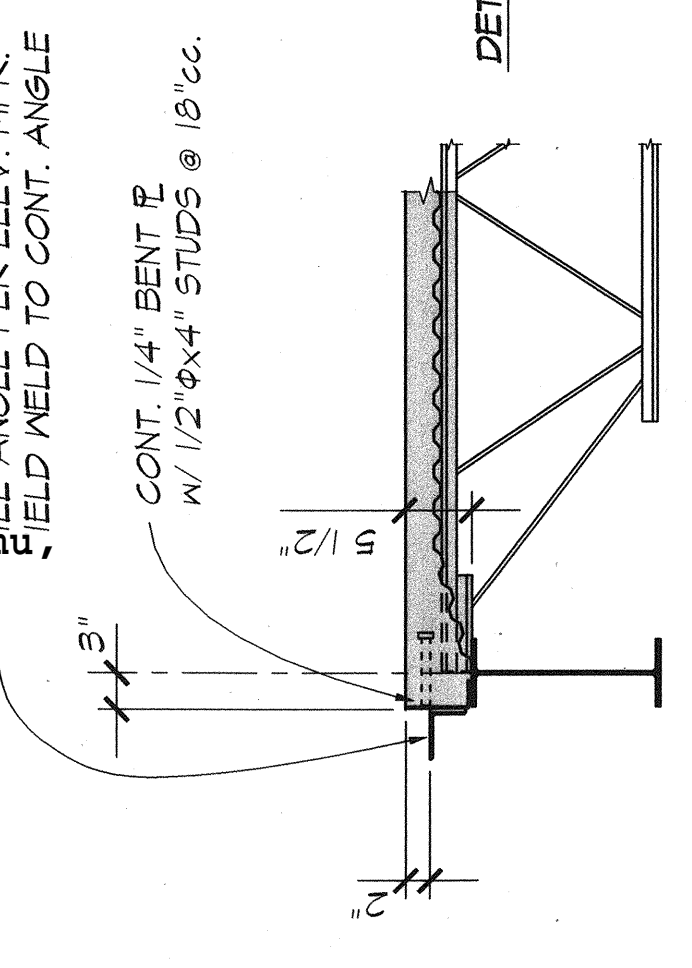
SECTION 3.1B / 53.1
3/4" = 1'-0"



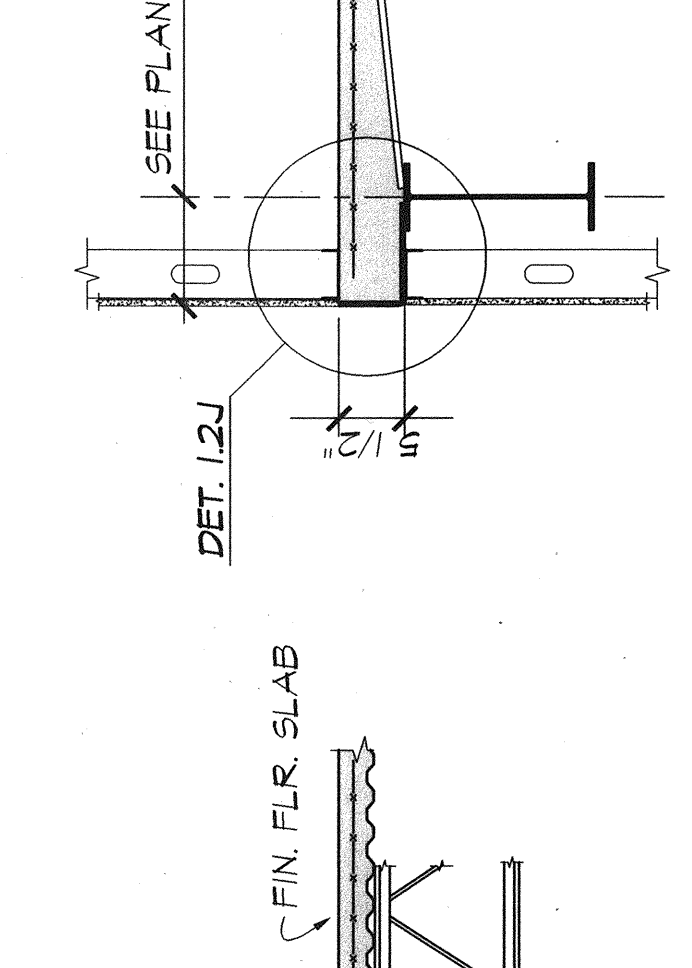
SECTION 3.1C / 53.1
3/4" = 1'-0"



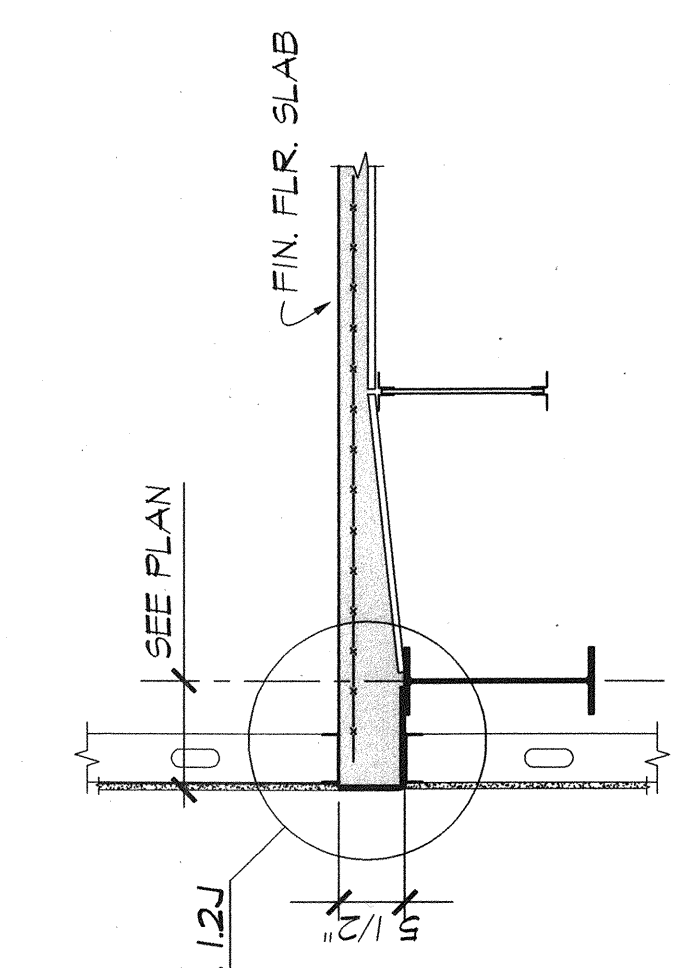
SECTION 3.1D / 53.1
3/4" = 1'-0"



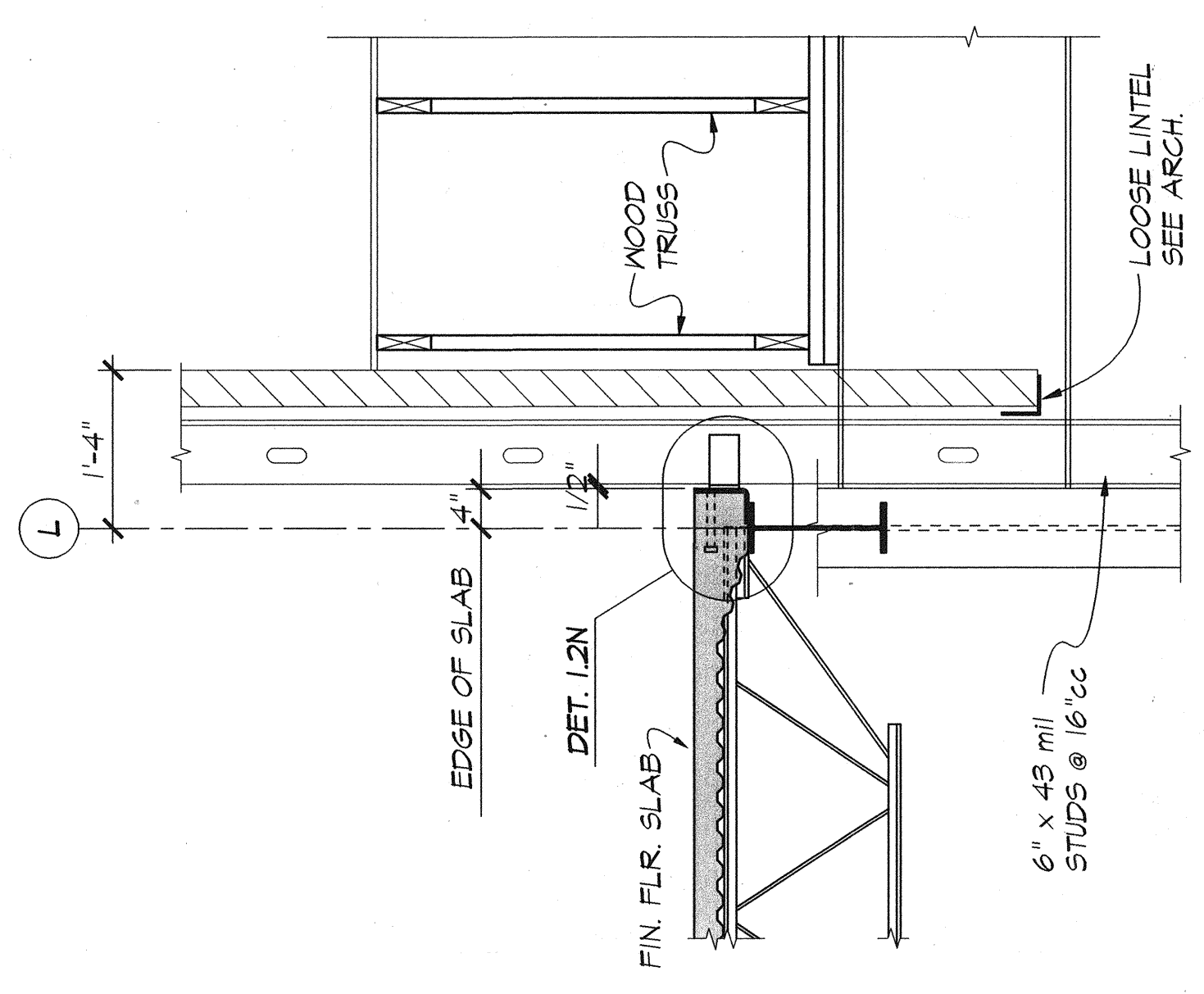
SECTION 3.1E / 53.1
3/4" = 1'-0"



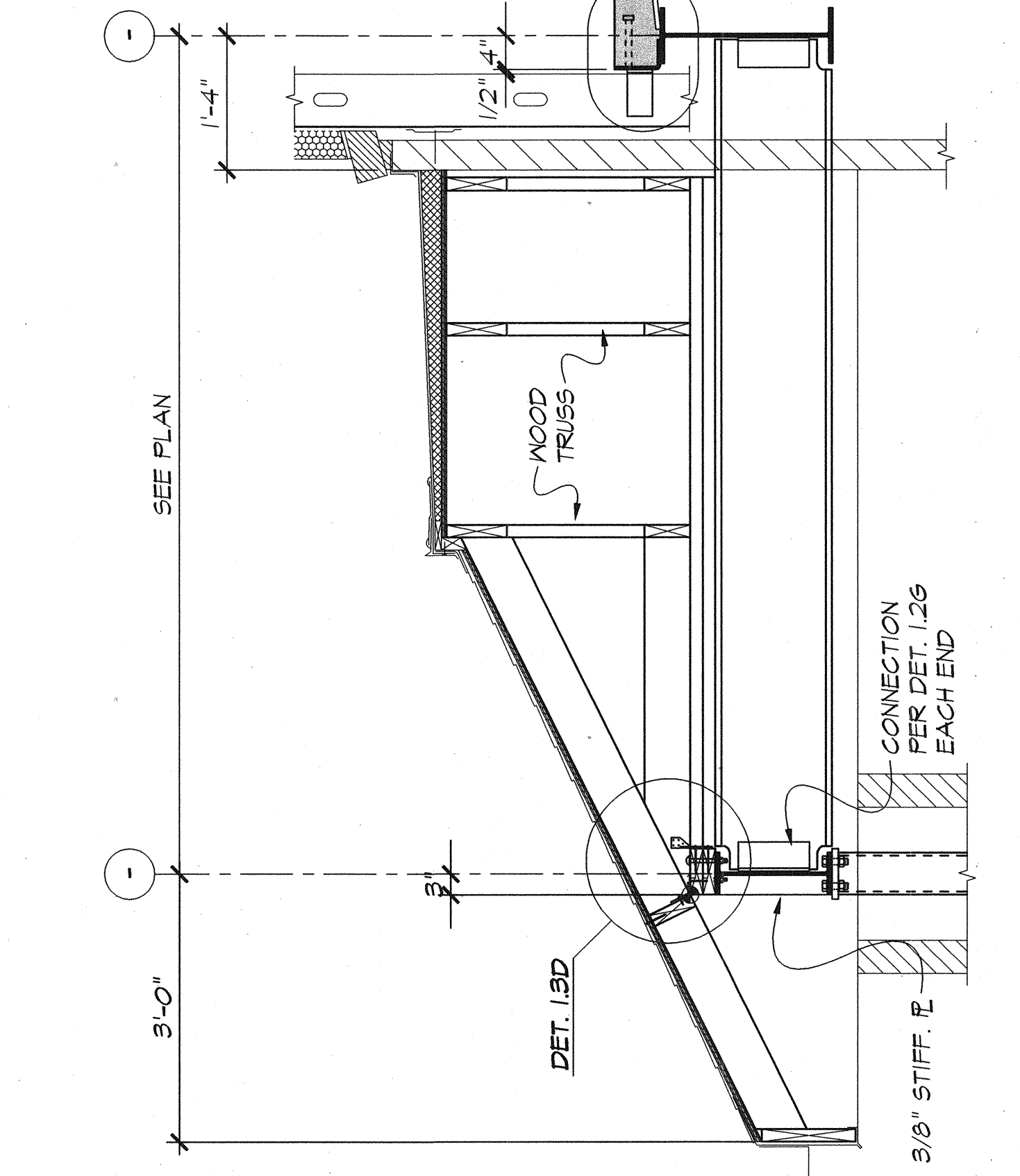
SECTION 3.1F / 53.1
3/4" = 1'-0"



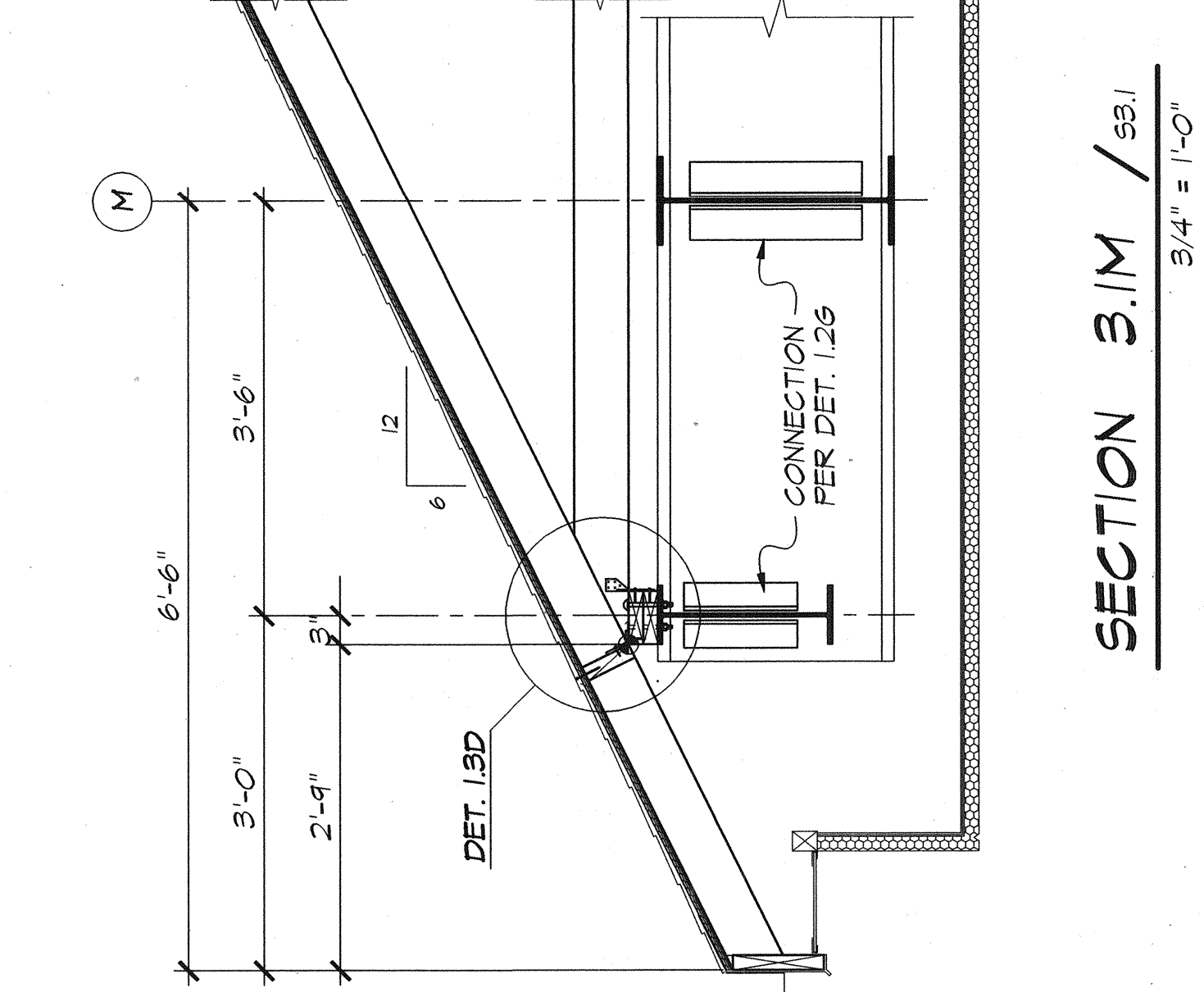
SECTION 3.1G / 53.1
3/4" = 1'-0"



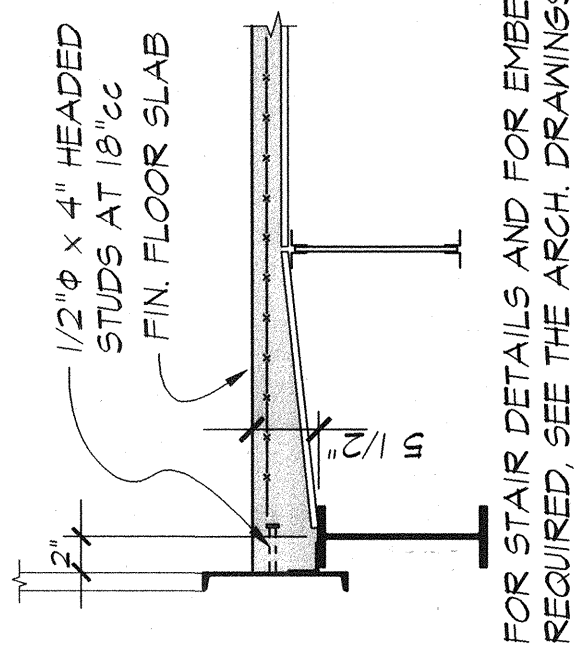
SECTION 3.1H / 53.1
3/4" = 1'-0"



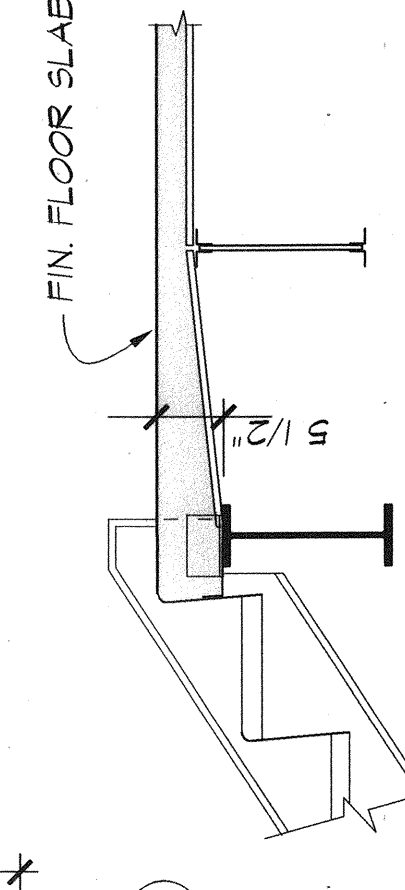
SECTION 3.1I / 53.1
3/4" = 1'-0"



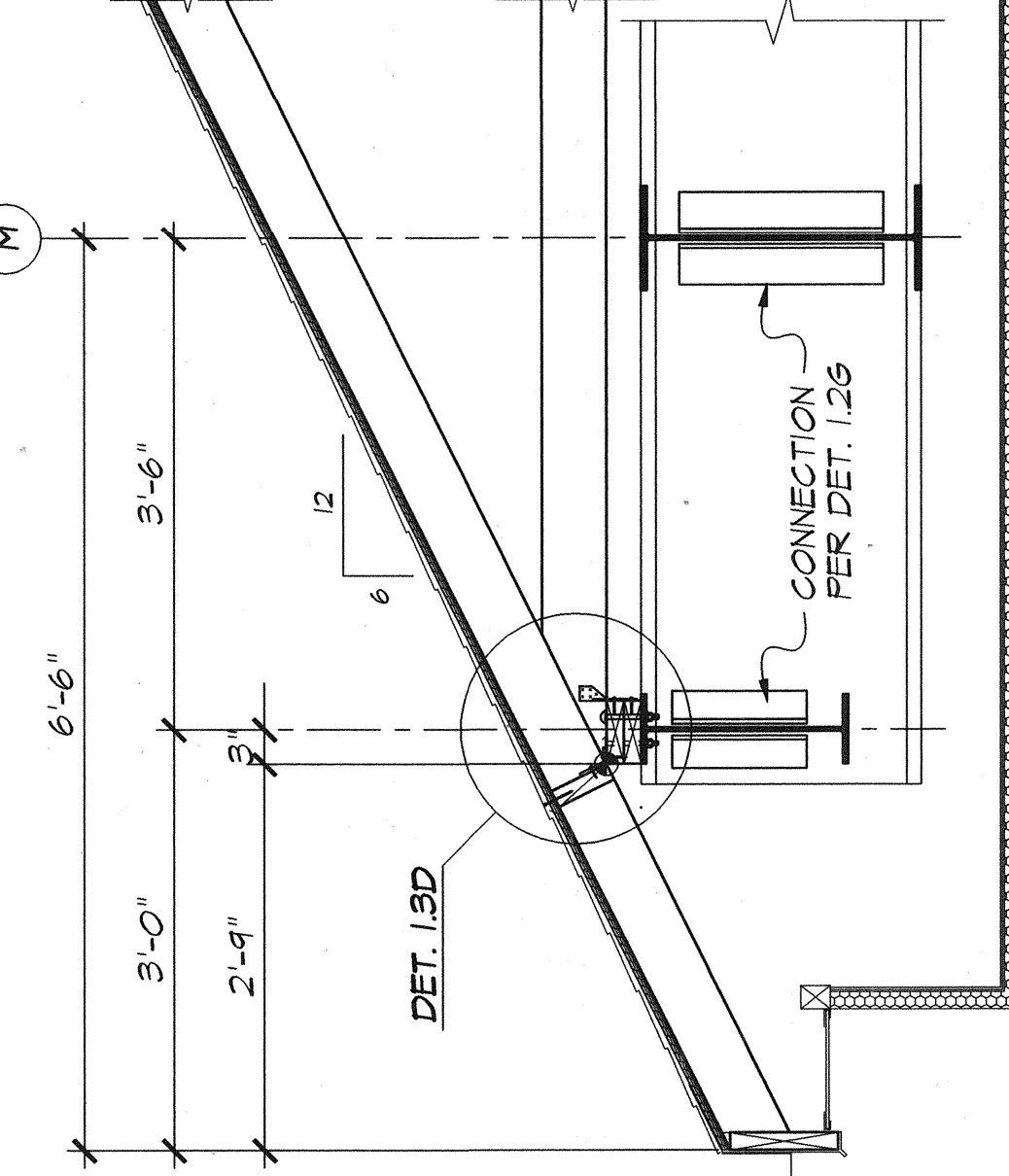
SECTION 3.1J / 53.1
3/4" = 1'-0"



SECTION 3.1K / 53.1
3/4" = 1'-0"

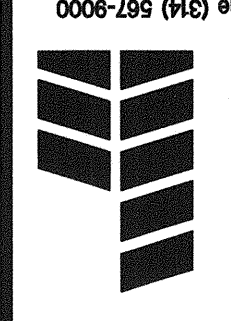


SECTION 3.1L / 53.1
3/4" = 1'-0"



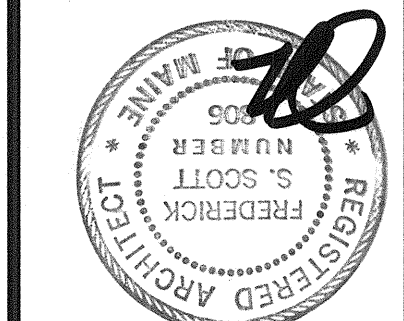
SECTION 3.1M / 53.1
3/4" = 1'-0"

A New Building for
EVERGREEN CREDIT UNION
Portland, Maine



Construction By
HBE Financial Facilities
A Division of HBE Corporation, 11330 Olive Boulevard, St. Louis, Missouri 63141, Phone (314) 567-9000

Frederick S. Scott, Architect
Ronald L. Hollander, Architect
11330 Olive Boulevard, St. Louis, Missouri 63141 (314) 567-9000



DB	AB	CB
SPC	LB	EE
Sheet No.	of	

S3.1
Copyright: HBE Corporation
Date: 2-4-04