

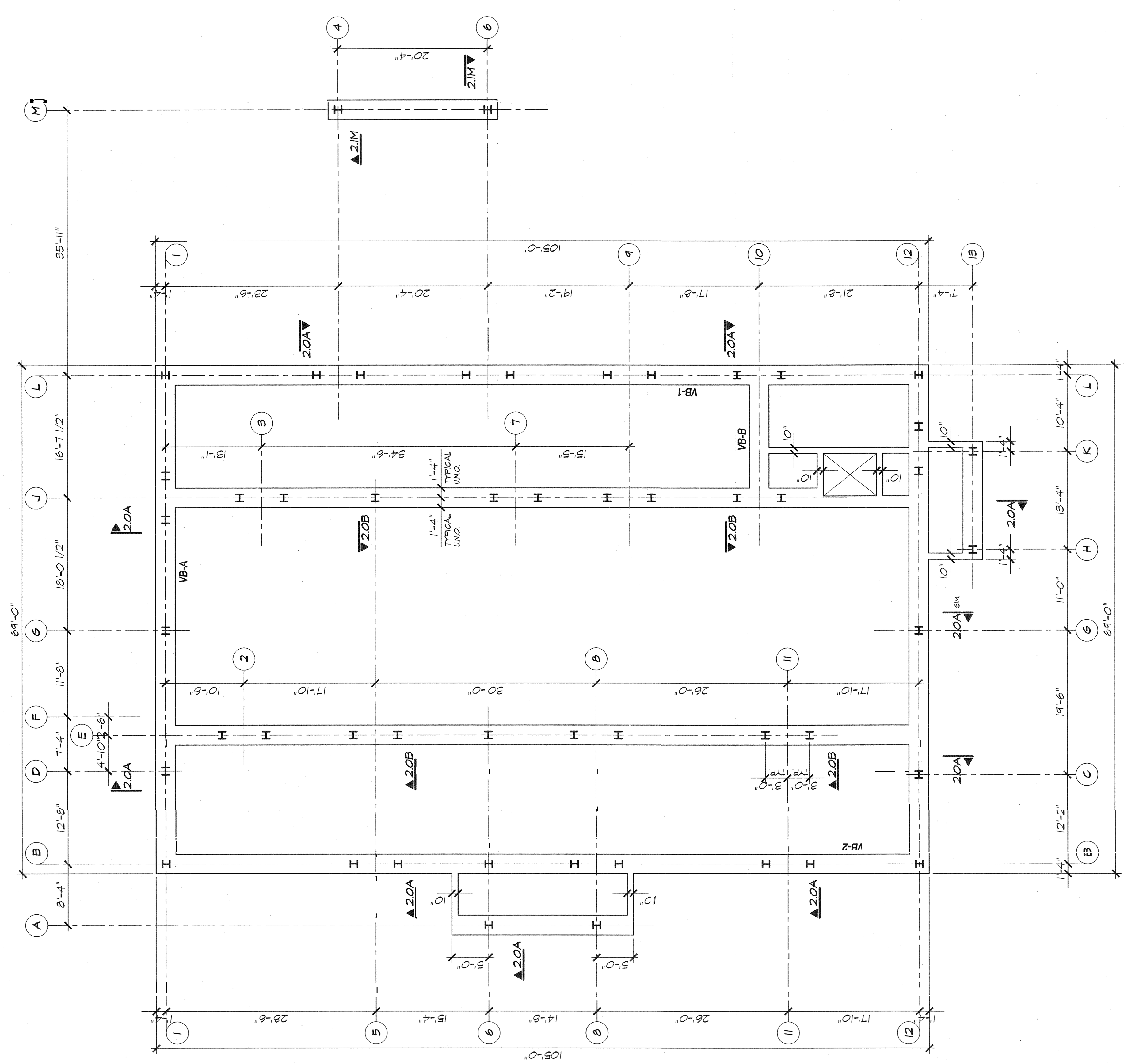
Frederick S. Scott, Architect
1130 Olive Boulevard, St. Louis, Missouri 63141 (314) 557-9000

Construction By
HBE Financial Facilities
A Division of HBE Corporation, 1130 Olive Boulevard, St. Louis, Missouri 63141 Phone (314) 557-9000

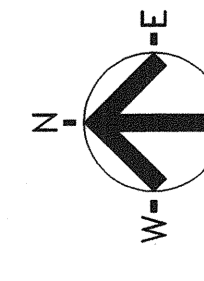


EVERGREEN CREDIT UNION
A New Building for
Portland, Maine

0:VFA30RTG52-0544g HEED02
BPR52-0P-02-04-04-04-04-04



PILING PLAN
1/8" = 1'-0"



- UNLESS NOTED OTHERWISE: 1/8" = 1'-0"
1. FINISHED FIRST FLOOR EL. 68'-0"
 2. PILES ARE CENTERED ON COLUMN CENTERLINES.
 3. PILES ARE HP 12X65 DRIVEN TO 80 TON CAPACITY IN ROCK. TIP ELEVATION ESTIMATED TO BE APPROX. -68'-0". SEE SPECS AND SOILS REPORT.
 4. FOR OVER EXCAVATION BACK FILL AND CONFACTION UNDER SLABS ON GRADE SEE CIVIL DRAWINGS AND SPECS.
 5. GENERAL NOTES AND TYPICAL DETAILS SEE SHEETS S11, S12 AND S13
 6. VERTICAL BRACING ELEVATIONS -- S61 COLUMN SCHEDULE -- S61

