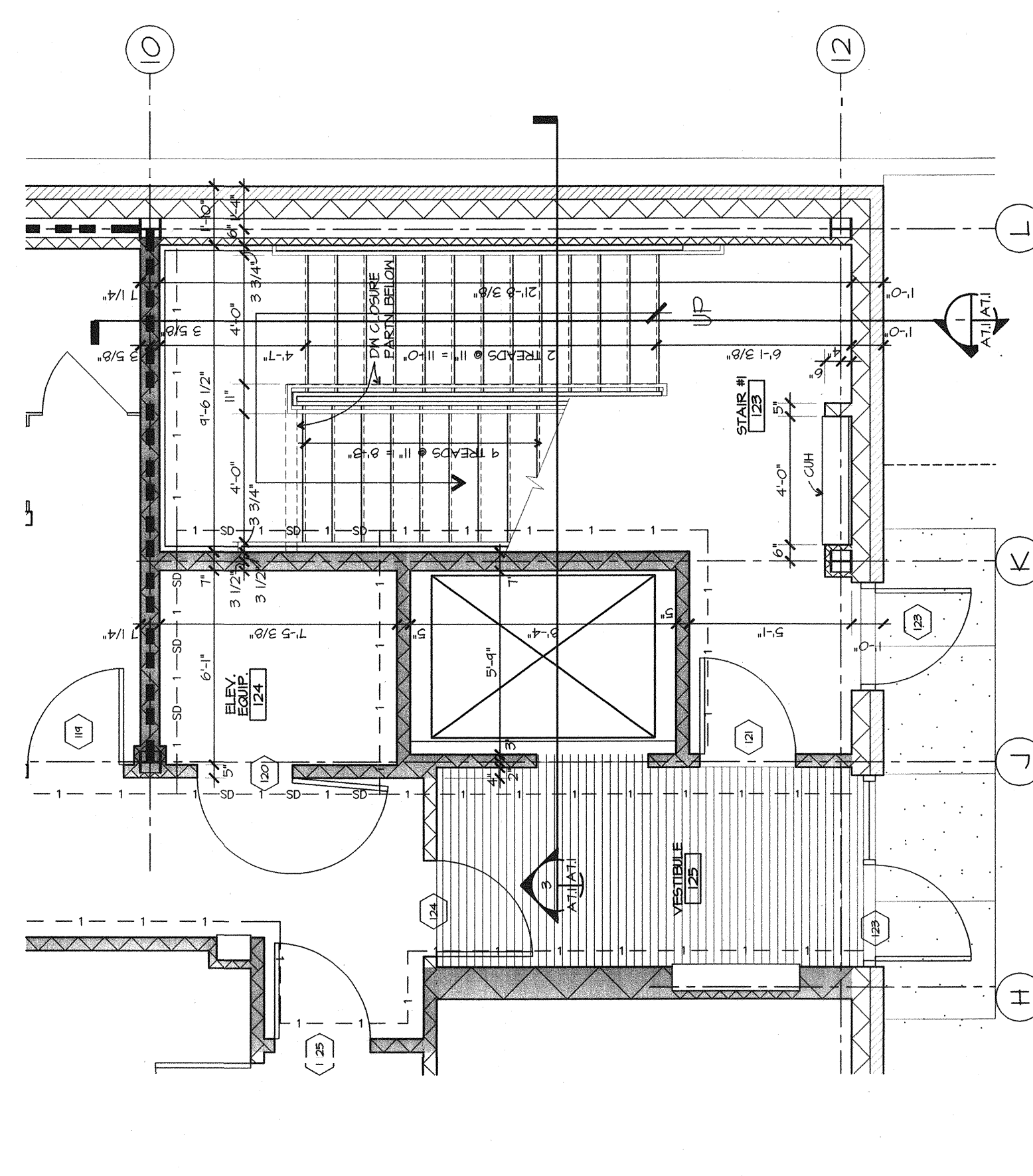
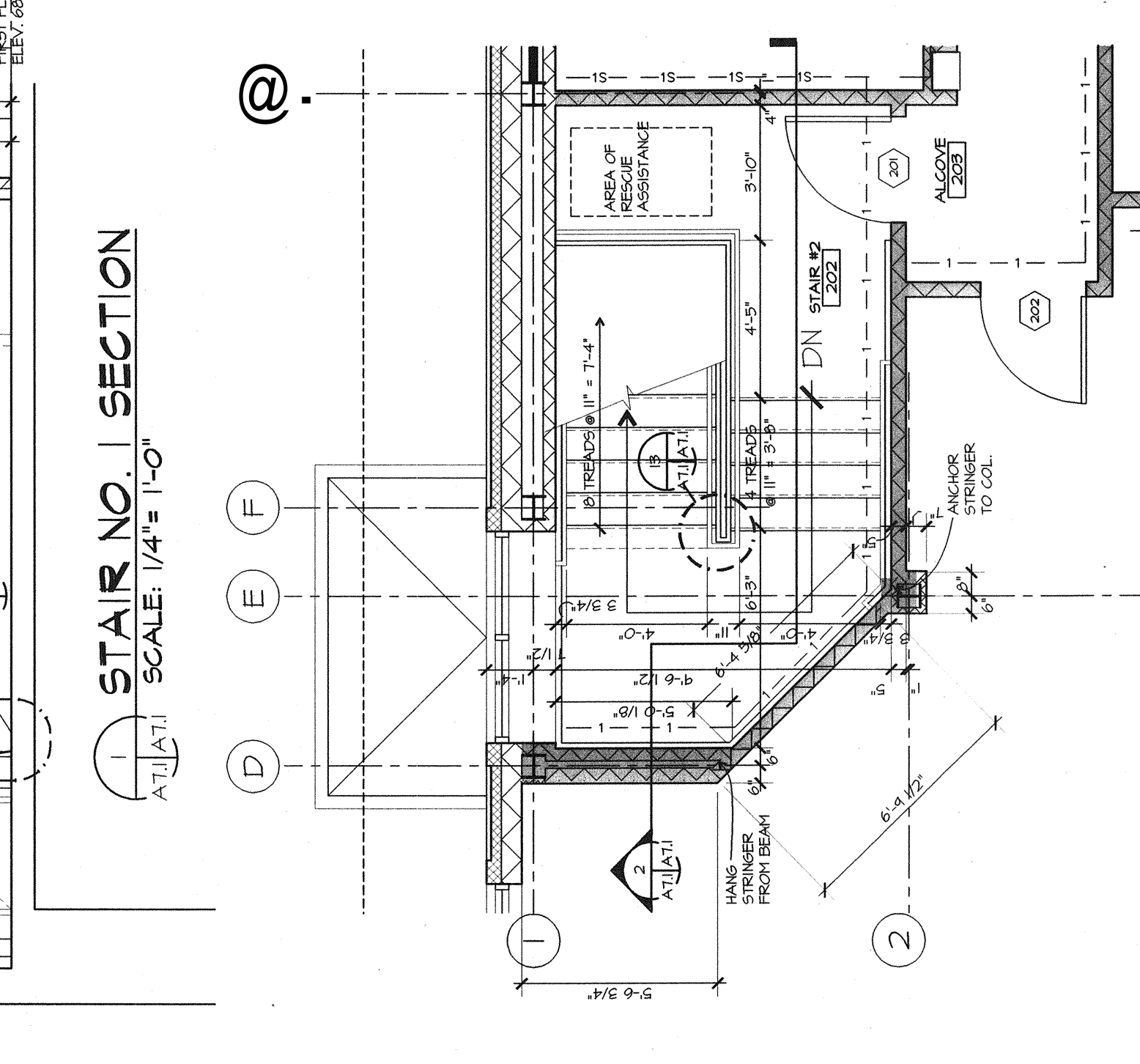


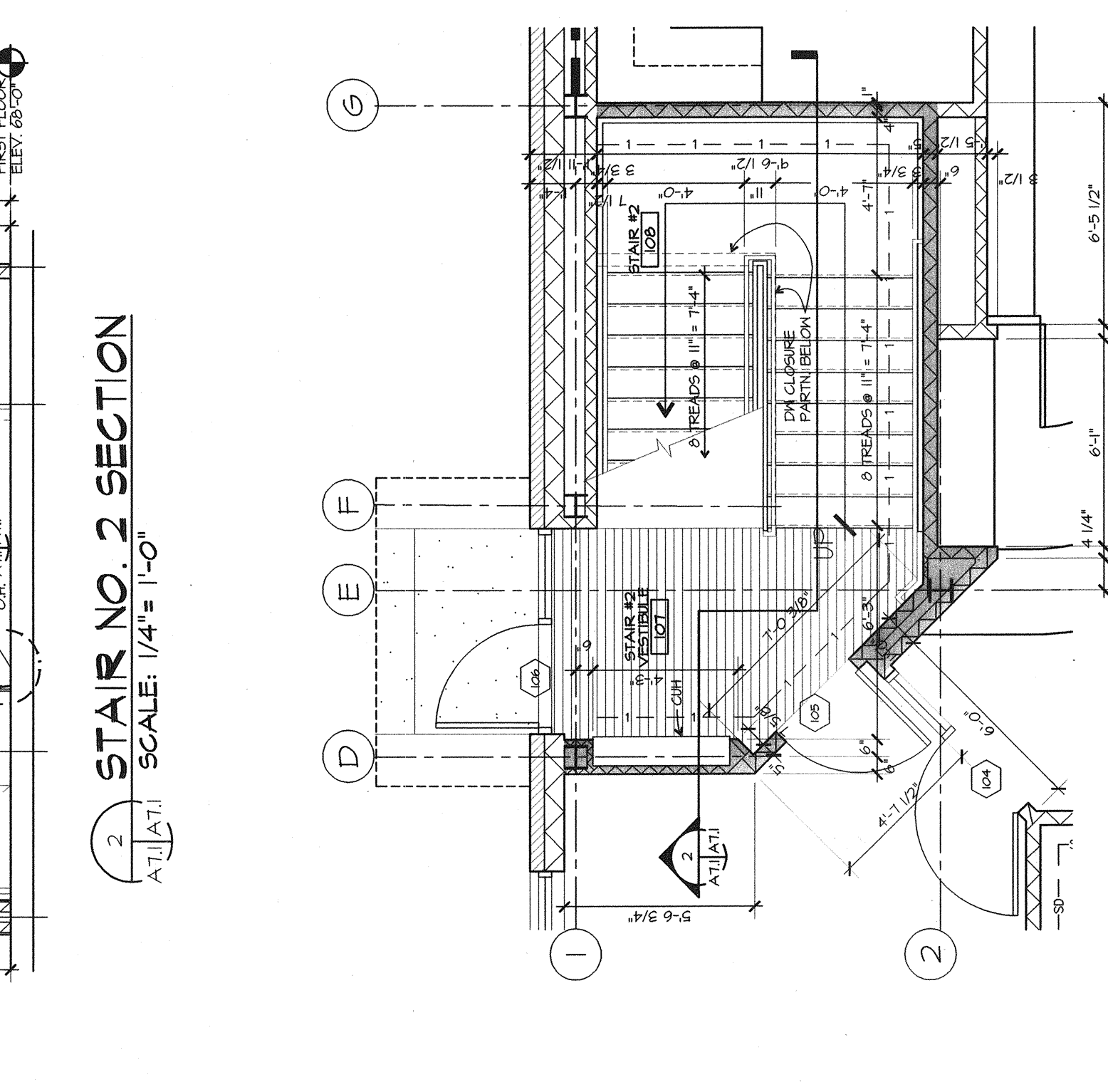
1 STAIR NO. 1 & ELEVATOR - SECOND FLOOR PLAN
Scale: 1/4" = 1'-0"



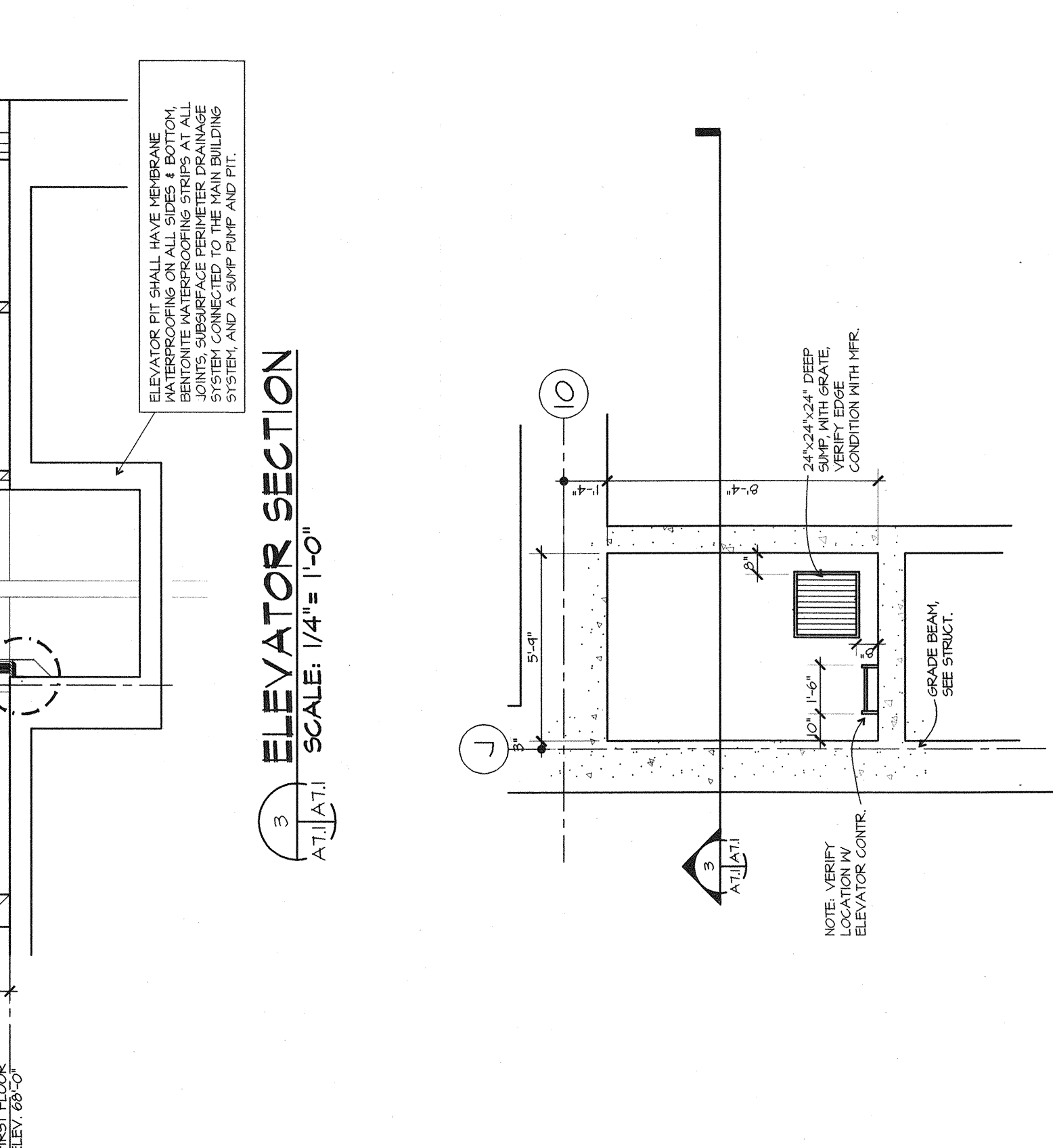
3 STAIR NO. 2 - FIRST FLOOR PLAN
Scale: 1/4" = 1'-0"



5 STAIR NO. 2 - SECOND FLOOR PLAN
Scale: 1/4" = 1'-0"



7 STAIR NO. 2 - FIRST FLOOR PLAN
Scale: 1/4" = 1'-0"



9 ELEVATOR PIT PLAN
Scale: 1/4" = 1'-0"

10 ELEVATOR SECTION
Scale: 1/4" = 1'-0"

A New Building for
EVERGREEN CREDIT UNION
Portland, Maine

Construction By
HBE Financial Facilities
A Division of HBE Corporation, 1530 Olive Boulevard, St. Louis, Missouri 63141, Phone (314) 967-9000

Frederick S. Scott, Architect
Ronald L. Hollander, Architect
1130 Olive Boulevard, St. Louis, Missouri 63141 (314) 967-9000

Professional Engineer Seal: **FREDERICK S. SCOTT**, No. 1083, State of Maine, Mechanical, License No. 1083.

Professional Engineer Seal: **RONALD L. HOLLANDER**, No. 1083, State of Maine, Mechanical, License No. 1083.

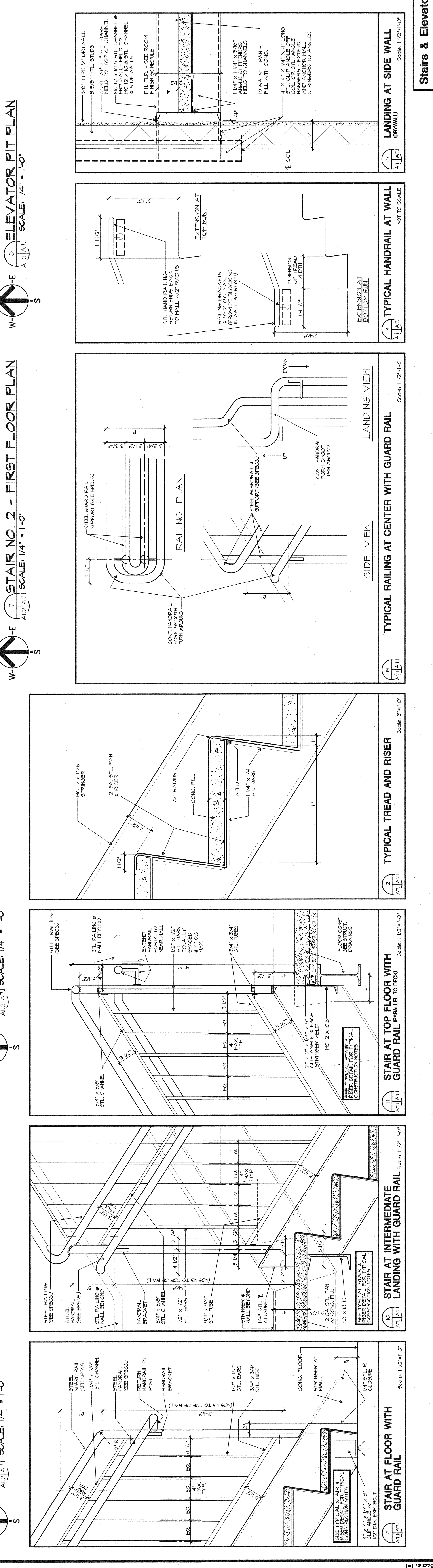
Sheet No. **A7.1** of **2**

Scale: 1/4" = 1'-0"

DB AB CB
RD/GC LE RED

Copyright © 2000

Deck 2-4-04



Stairs & Elevator Details