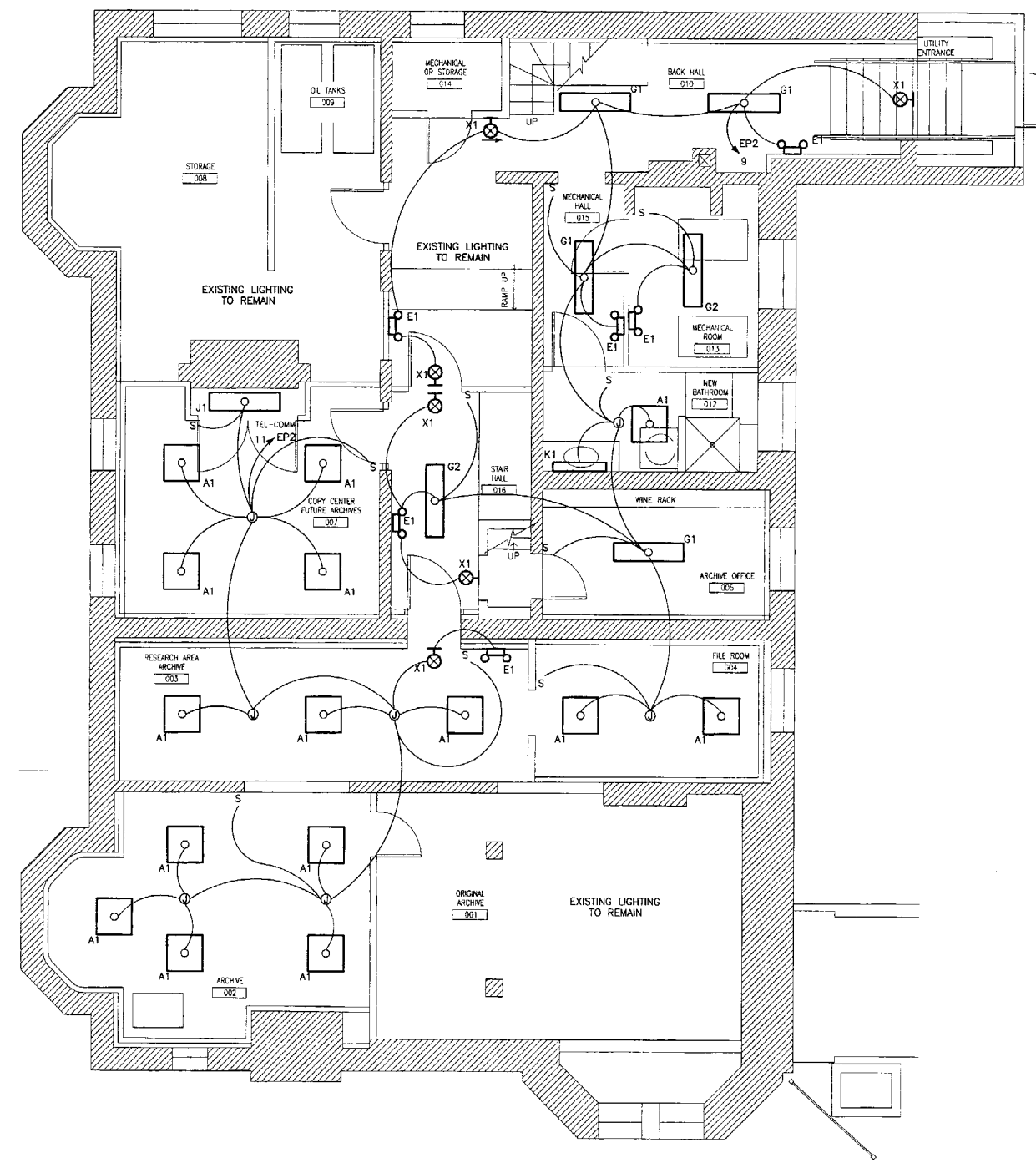


Lawrence E. Bartlett



LIGHTING FIXTURE SCHEDULE

NO.	MANUFACTURER	CAT. NO.	NO.	LAMP TYPE	DESCRIPTION
A1	METALUX	2GP-2U6T8A-120V-EB81	2	F32T8/SPX35	2 X 2 RECESSED FLUORESCENT WITH ACRYLIC LENS.
E1	SURE-UTES	CC-7-WH		BY MANUFACTURER	12 VOLT, SELF-CONTAINED EMERGENCY LIGHT RATED TO OPERATE 90 MINUTES UPON LOSS OF NORMAL POWER.
G1	METALUX	WS-232A-120V-EB81	2	F32T8/SPX35	1 X 4 SURFACE FLUORESCENT SURFACE WRAP.
G2					EXISTING 1 X 4 SURFACE FLUORESCENT RELOCATED
J1	METALUX	SS-232-120V-EB81	2	F32T8/SPX35	4 LONG 2 LAMP COMMERCIAL SURFACE MOUNTED STRIP LIGHT
K1	METALUX	BC-232-120V-EB81	2	F32T8/SPX35	WALL MOUNTED CUT-OFF FIXTURE UL LISTED FOR WET LOCATIONS
X1	SURE-UTES	LPX-7-0-R-WH		BY MANUFACTURER	SINGLE FACE DIE CAST MIT SIGN WITH MINUTE SIGN NEEDED TO OPERATE FOR 90

1 ALL LIGHT FIXTURES ARE 120 VOLT EXCEPT AS SPECIFICALLY NOTED OTHERWISE IN SCHEDULE
 2 LAMP DESIGNATIONS REFER TO GENERAL ELECTRIC ORDERING CODES. ALSO APPROVED ARE EQUIVALENT LAMPS BY OSRAM-SYLVANIA AND PHILIPS-WESTINGHOUSE
 3 EQUIVALENT LIGHT FIXTURES BY ALTERNATE MANUFACTURERS WILL BE CONSIDERED FOR APPROVAL

LORING HOUSE
 143 STATE STREET
 PORTLAND, MAINE

Title:
LIGHTING PLAN

Project No:
 Date: **OCTOBER 10, 2003**
 Revisions:

Issued For: **CONSTRUCTION**

Drawing No:
E2