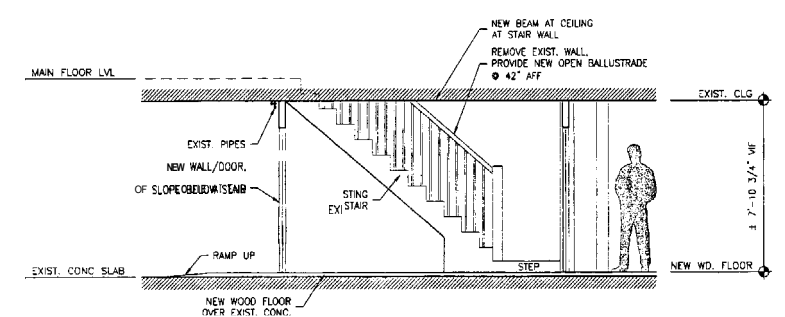


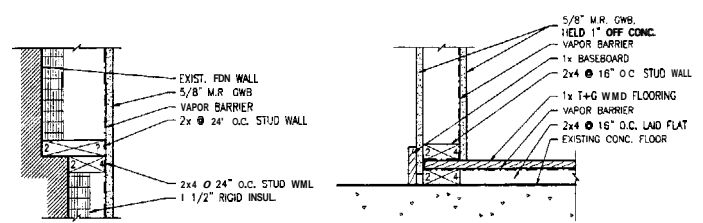
LORING HOUSE
143 STATE STREET
PORTLAND, MAINE

| DOOR SCHEDULE | | | | | | | |
|---------------|-----------------|-----------------|----------------|----------------|--------|--|--|
| NO. | DOOR | | SIZE | | THICK | NOTES | |
| | FROM ROOM | TO ROOM | WIDTH | HEIGHT | | | |
| B01 | MECH. HALL | MECHANICAL ROOM | 3'-0" | 6'-8" | 1 3/4" | 1 HOUR FIRE RATED DOOR | |
| B02 | STAIR HALL | RESEARCH AREA | 3'-0" | 6'-8" | 1 3/4" | 1 HOUR FIRE RATED DOOR | |
| B03 | MECH. HALL | NEW BATHROOM | 3'-0" | 6'-8" | 1 3/4" | | |
| B04 | OIL TANKS | BACK HALL | 3'-0" | 6'-8" | 1 3/4" | | |
| B05 | COPY CENTER | STAIR HALL | 3'-0" | 6'-8" | 1 3/4" | | |
| B06 | MECH. OR STOR. | BACK HALL | 2'-6" 1/2" VIF | 6'-6" 1/4" VIF | 1 3/4" | REWORK FRAME STOP TO ACCOMMODATE NEW OUTSWING DOOR | |
| B07 | STAIR HALL | BACK HALL | 3'-0" | 6'-8" | 1 3/4" | | |
| B08 | TEL-COMM CLOSET | COPY CENTER | 2'-6" PAIR | 6'-8" | 1 3/8" | | |
| B09 | BACK HALL | OUTSIDE | 3'-0" | 6'-8" | 1 3/4" | METAL INSULATED DOOR | |

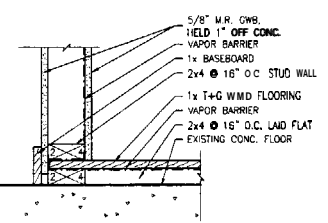
| WINDOW SCHEDULE | |
|-----------------|--|
| WINDOW | NOTES |
| A | REHABILITATE EXIST. CELLAR SASH. PROVIDE NEW INTERIOR STORM WINDOW W/ LV FILTER ON GLASS |
| B | SAVE AS WINDOW TYPE B, EXCEPT NO LV FILTER ON GLASS |



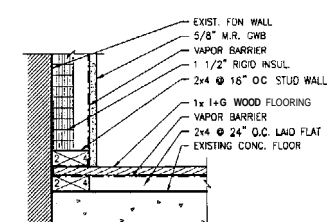
3 STAIR ELEVATION
1/4"=1'-0" A.I.I



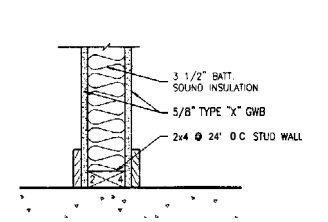
WALL TYPE #1S



WALL TYPE #2

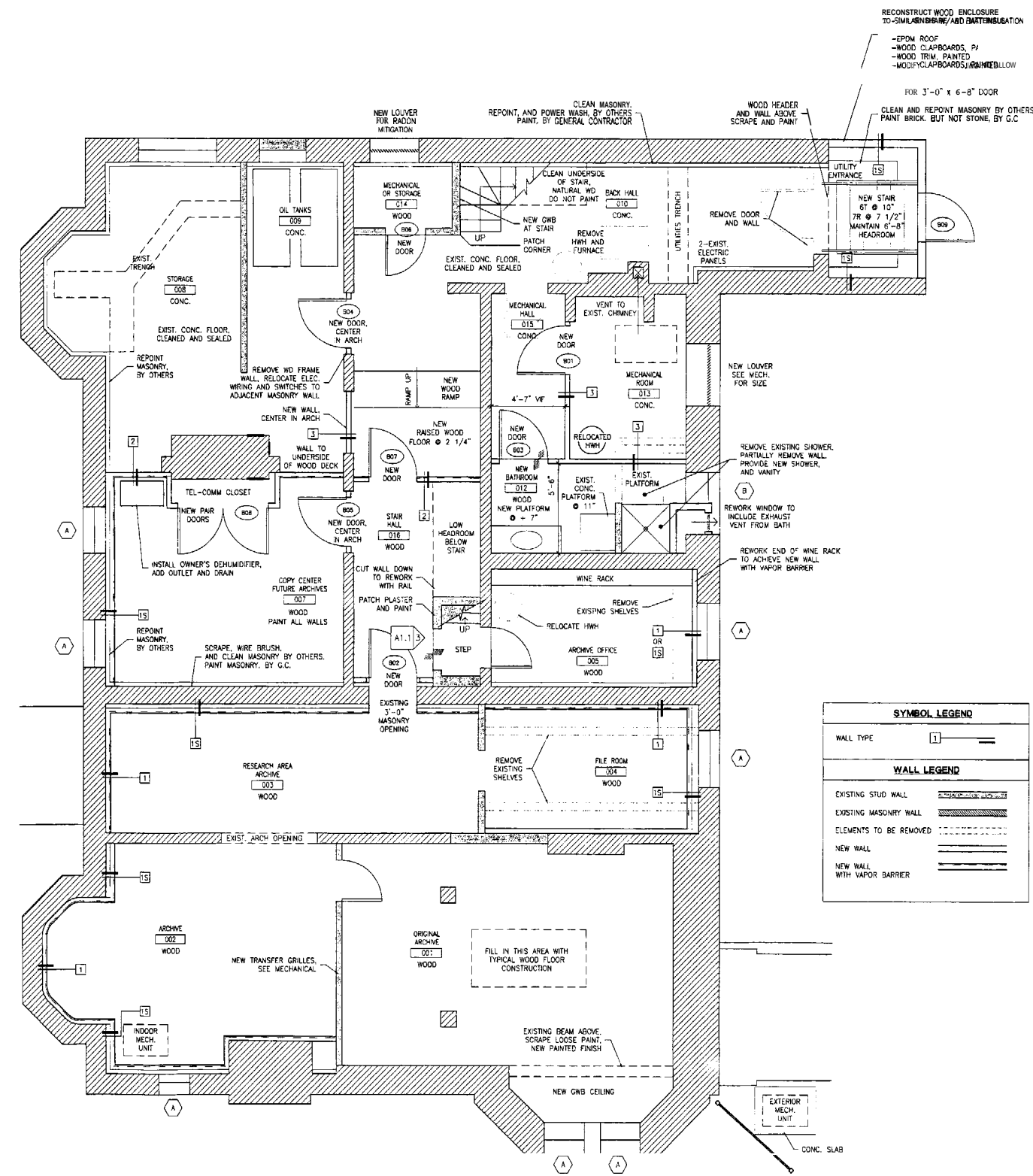


WALL TYPE a1



WALL TYPE a3

2 WALL TYPES
1 1/2"=1'-0"



| SYMBOL LEGEND | |
|-----------------------------|---|
| WALL TYPE | 1 |
| WALL LEGEND | |
| EXISTING STUD WALL | |
| EXISTING MASONRY WALL | |
| ELEMENTS TO BE REMOVED | |
| NEW WALL | |
| NEW WALL WITH VAPOR BARRIER | |

1 NEW ARCHIVE PLAN
1/4"=1'-0"

Title:
**NEW ARCHIVE PLAN,
WALL TYPES,
AND SCHEDULES**

Date: OCTOBER 9, 2003
Revisions:

Issued For: CEO REVIEW

Drawing NO:

A1.1