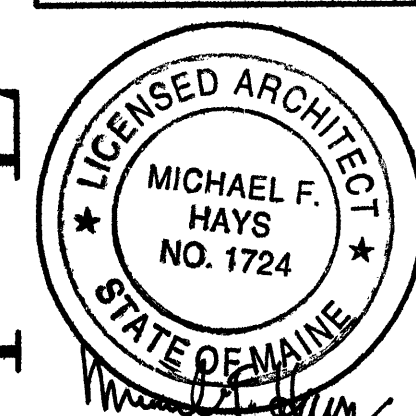


COPYRIGHT
REPRODUCTION OR USE OF
THIS DOCUMENT WITHOUT
WRITTEN PERMISSION FROM
GRANT HAYS ASSOCIATES IS
PROHIBITED



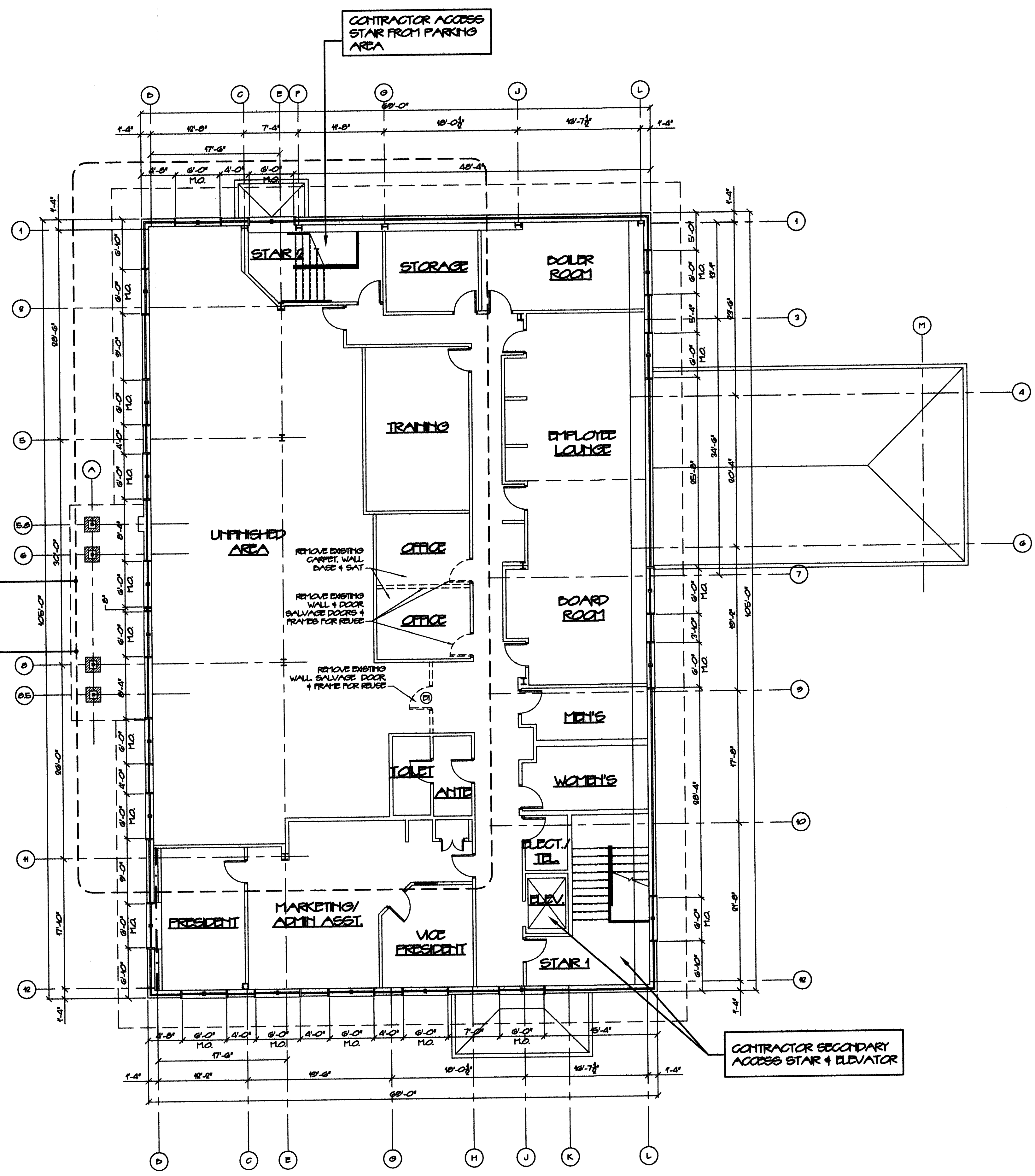
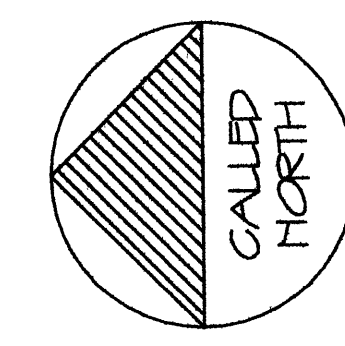
REVISIONS

PHASE II
EVERGREEN CREDIT UNION
225 RIVERSIDE STREET PORTLAND, MAINE

ARCHITECTURE
INTERIOR DESIGN
P.O. BOX 6178 FALMOUTH, MAINE 04105
(207) 871-9800

EXISTING
SECOND
FLOOR PLAN

SCALE 1/8" = 1'-0"
DATE 12 NOV. 07
DRAWN BY SAM/MPH
JOB NO. 070901
DRAWING NO. A-1



CONTRACTOR ACCESS
STAR FROM PARKING
AREA

CONTRACTOR SECONDARY
ACCESS STAR + ELEVATOR

SEE SHEET A2
& A3 FOR NEW
CONSTRUCTION
IN THIS WORK AREA

NOTE: EXTEND EXISTING
HVAC AND FIRE ALARM
SYSTEMS INTO NEW
CONSTRUCTION AREA

EXISTING SECOND FLOOR PLAN
SCALE 1/8" = 1'-0"

NFPA 101 LIFE SAFETY CODE - 2003 EDITION

BUILDING CLASSIFICATION	DUESSES (2,250 SF)
CONSTRUCTION TYPE	II (200)
HAZARD CLASSIFICATION	CLASS D - ORDINARY HAZARD
OCCUPANT LOADS	DUESSES 100 SF/OCC - 84
SEPARATION OF USE RATINGS	2 HOUR (ONE HOUR IF FULLY SPRINKLED)
TENANT SEPARATION	1 HOUR (ONE HOUR IF FULLY SPRINKLED)
JANITOR, MECH, STOR. RATINGS	2 HOURS (ONE HOUR IF FULLY SPRINKLED)
STAIR RATINGS	2 HOURS
ELEVATORS/SHAFTS	1 HOUR RATED INONE IF SPRINKLED
AREA OF REFUGE	44'
MINIMUM STAIR WIDTH	7'
MINIMUM RISER HEIGHT	6'-0" AT STAIRS, 7'-6" AT OCCUPIED SPACES
MINIMUM TREAD WIDTH	10'-0"
MINIMUM HEADROOM	8'-0"
MINIMUM HT BETWEEN LANDINGS	8'-0"
GUARDRAIL HEIGHT	42"
HANDRAIL HEIGHT	36"
HANDRAIL TOP EXTENSION	12" HORIZ
HANDRAIL BOTTOM EXTENSION	14" ANGLED + 12" HORIZ
HANDRAIL DIAMETER	1 1/2" DIA.
MINIMUM ALLOWABLE OPEN SPACE	LESS THAN 4"
MAX ALLOWABLE TRAVEL DISTANCE	300' 180' IF FULLY SPRINKLED
MAX ALLOWABLE CORNER PATH	75' 120' IF FULLY SPRINKLED
MAX ALLOWABLE DEAD END CORRIDOR	80' 80' IF FULLY SPRINKLED
MINIMUM CORRIDOR WIDTH	44'
MINIMUM NUMBER OF REQUIRED ENITS	2 AT EACH FLOOR
MINIMUM HORIZ CORRIDOR ENCLOSURE RATINGS	1 HR INONE IF FULLY SPRINKLED
SEPARATION OF EXISTING	05 THE DIAGONAL DISTANCE (33 IF FULLY SPRINKLED)
FLOOR HARDWARE	REQUIRED IF OVER 50 TOTAL OCCUPANTS
FIRE ESCAPES AS MEANS OF EGRESS	ALLOWED
MINIMUM EGRESS DOOR WIDTH	32"
EXIT LIGHTING	REQUIRED
EMERGENCY LIGHTING	REQUIRED
FIRE SPRINKLER SYSTEM	NOT REQUIRED
FIRE ALARM SYSTEM	REQUIRED COVER 50 OCCUPANTS ON 2ND FLOOR
PORTABLE FIRE EXTINGUISHERS	REQUIRED

2003 INTERNATIONAL BUILDING CODE

USE GROUP CLASSIFICATION	DUESSES (2,250 SF)
OCCUPANT SEPARATION RATINGS	DUESSES 100 SF/OCC - 84
TENANT SEPARATION PARTY WALLS	2 HOURS
JANITOR, MECH + STORAGE ROOMS	1 HOUR (ONE HOUR IF FULLY SPRINKLED)
BUILDING LIMITATIONS	4 STORY
CONSTRUCTION TYPE	II (200)
MAXIMUM AREA / FLOOR	10,000 SF
HEIGHT/AREA SPRINKLER INCREASES	1 STORY/10' AND 200'
FIRE RESISTANCE (MINIMUM)	NOT REQUIRED
STRUCTURAL FRAME	NOT REQUIRED
FLOOR CONSTRUCTION	NOT REQUIRED
ROOF CONSTRUCTION	NOT REQUIRED
LOAD BEARING EXTERIOR WALLS	2 HOUR
LOAD BEARING INTERIOR WALLS	NOT REQUIRED
FIRE SEPARATION EXITS (STAIRS)	1 HOUR (ONE HOUR IF FULLY SPRINKLED)
SHAFTS + ELEVATOR HOISTWAYS	2 HOURS
OTHER ASSEMBLY/SWING BARRIERS	1 HOUR (ONE HOUR IF FULLY SPRINKLED)
EXIT CORRIDORS	2 PER FLOOR
MINIMUM NUMBER OF ENITS	2 PER FLOOR
MINIMUM DEAD END CORRIDOR LENGTH	100'
MINIMUM EXIT TRAVEL DISTANCE	300' 180' IF FULLY SPRINKLED
MINIMUM STAIR CORRIDOR WIDTH	44'
MINIMUM RISER HEIGHT	7"
MINIMUM TREAD DEPTH	11"
MINIMUM RAMP WIDTH	48"
MINIMUM RAMP PITCH	1:12
HANDRAILS + GUARDRAILS	SAME AS NFPA 101
MINIMUM CEILING HEIGHT	7'-0"
EGRESS FIRE ESCAPES	ALLOWED
FIRE ALARM SYSTEM	REQUIRED
FIRE SPRINKLER SYSTEM	NOT REQUIRED
EXIT LIGHTING	REQUIRED
EMERGENCY LIGHTING	REQUIRED
PORTABLE FIRE EXTINGUISHERS	REQUIRED
BUILDING LIVE LOADS	50 PSF
OFFICE SPACES	100 PSF EXCEPT 80 PSF @ UPPER FLOOR CORRIDORS
CORRIDORS, LOBBIES + STAIRS	