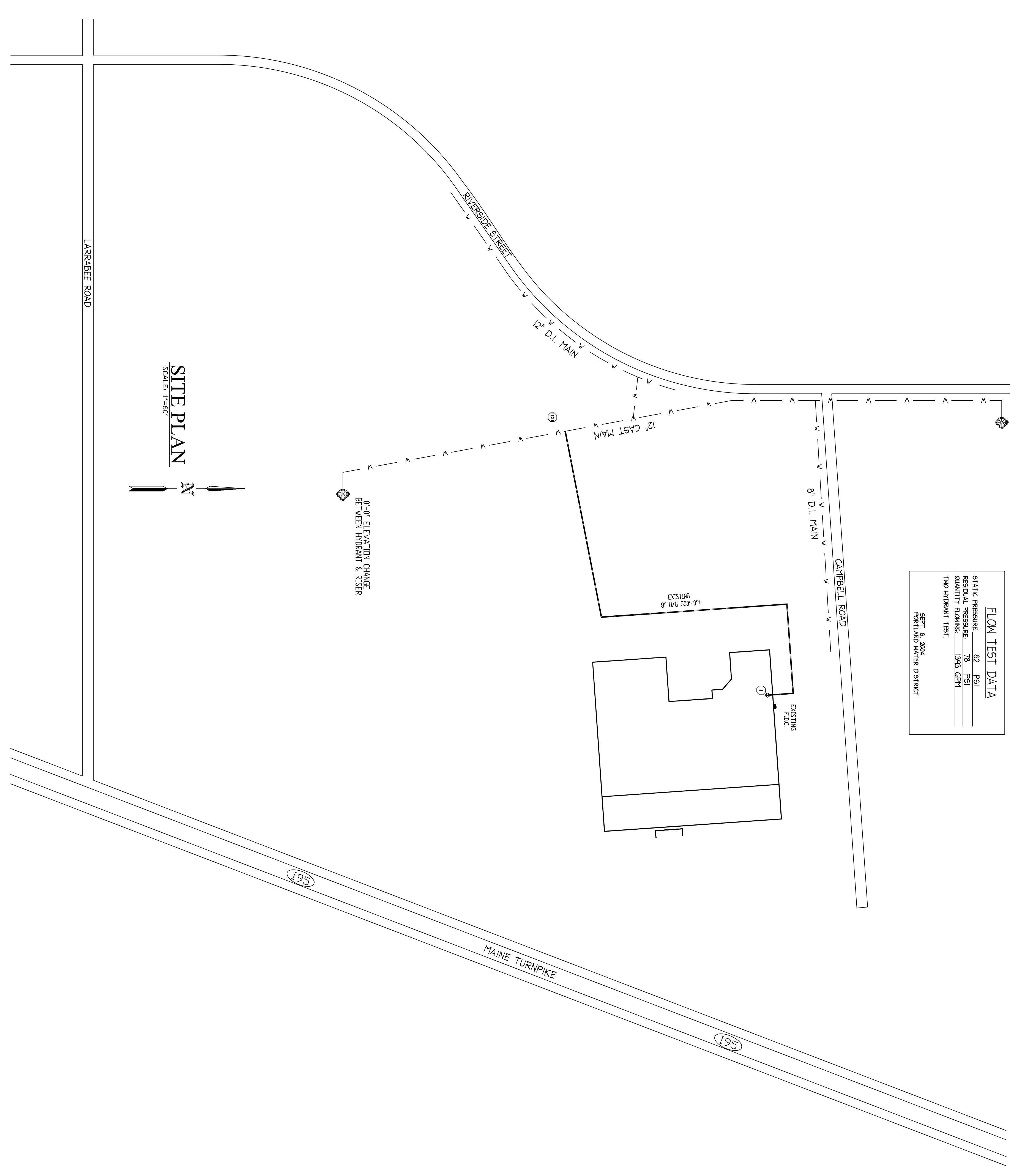
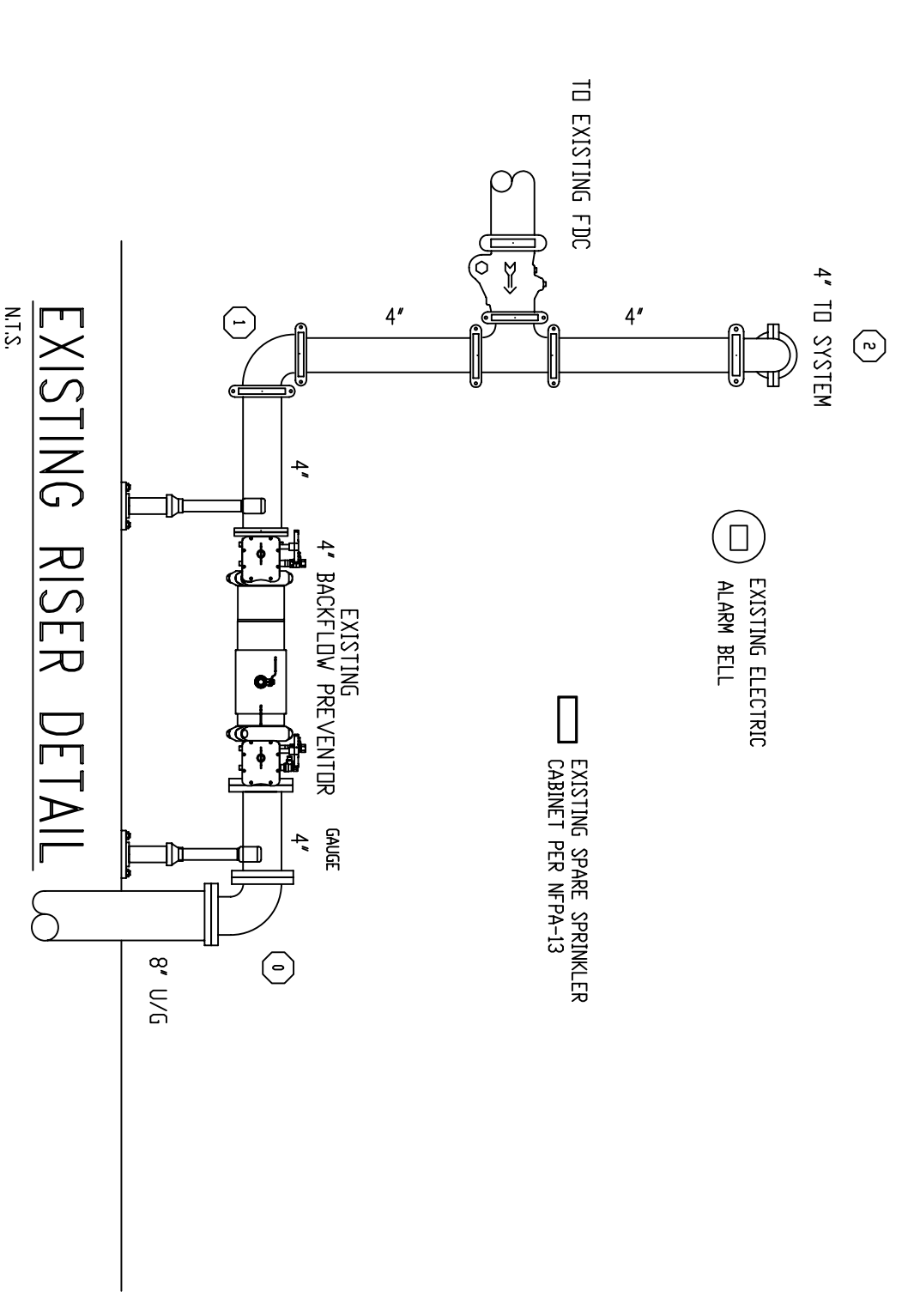


FIRE SPRINKLER GENERAL NOTES

OCCUPANCY: CAR DEALERSHIP ADDITION
 DESIGN STANDARD: NFPA-13 2010
 DESIGN DENSITY: 0.15 GPM/945 SQ.FT.
 SPRINKLERS UPRIGHT: TYCOO (AS NOTED ON PLAN)
 SPRINKLERS PENDENT: TYCOO (AS NOTED ON PLAN)
 ESCUTCHEONS: WHITE 2 PIECE SEMI-REC.
 PIPING 1"-1 1/2": SCH. 40 BLACK STEEL WITH THREADED ENDS,
 PIPING 2"-6": SCH. 10 BLACK WITH GROOVED ENDS,
 HANGERS TO BE U.L. & FM APPROVED.
 AND SPACED PER NFPA-13
 ALL PIPING TO BE TESTED AT 200 PSI FOR 2 HOURS.
 PROVIDE TAMPER SWITCH ON ALL CONTROL VALVES.
 PROVIDE HYDRAULIC NAME PLATE PER NFPA-13.
 COORDINATE FIRE SPRINKLER PIPING WITH OTHER TRADES.
 (⊕) DENOTES HYDRAULIC REFERENCE POINTS.
 + DENOTES GROOVED COUPLING IN PIPE.
 RN = RISER NIPPLE.
 SG = SPRIG.
 DN = DROP NIPPLE.
 GC = GROOVED COUPLING.
 TOE = THREAD ONE END.
 GBE = GROOVE BOTH ENDS.



FLOW TEST DATA

STATIC PRESSURE	67 PSI
DESIGN PRESSURE	100 PSI
TEST PRESSURE	150 PSI
THO. HYDRANT TEST	150 PSI

SEPT. & 2004
 FORTLAND WATER DISTRICT

REVISIONS	NOTES	SPRINKLER TYPE	IDENTIFICATION NO.	MFG.	ESC.	HEAD COUNT	ORIFICE	TEMP.	SYMBOL	QUANT.
TOTAL SPRINKLERS THIS DRAWING										

STANDARD SYMBOLS

- ⊕ - POST INDICATOR VALVE
- ⊕ - KEY VALVE
- ⊕ - FIRE HYDRANT
- ⊕ - FIRE DEPT. CONNECTION
- ⊕ - O.S. & A. GATE VALVE
- ⊕ - NEW UNDERGROUND
- ⊕ - EXIST UNDERGROUND

STANDARD SYMBOLS

- ⊕ - ALARM CHECK VALVE
- ⊕ - RISER W/ALARM VALVE
- ⊕ - RISER W/DRY VALVE
- ⊕ - RISER W/ELEC. FLOW SWITCH
- ⊕ - RISER W/DELUGE VALVE
- ⊕ - ELECTRIC BELL
- ⊕ - FLUSH FIRE DEPT. CONNECTION

INSPECTIONS

1.	
2.	
3.	
4.	
5.	

RESPONSIBLE MANAGING SUPERVISOR #348
 CONTRACTOR LICENSE #295

JOB No. M0080
 DATE 7/9/12
 DRAWN BY MAN
 SCALE AS NOTED
 SHEET No.
 FP-10f2

BERLIN CITY TOYOTA SHOWROOM ADDITION
 191 RIVERSIDE STREET
 PORTLAND, MAINE 04103
 FIRE PROTECTION PLAN
 FREEDOM FIRE PROTECTION, INC.
 209 QUAKER RIDGE ROAD
 CASCO, MAINE 04015