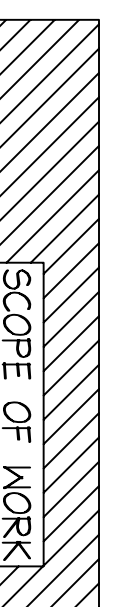
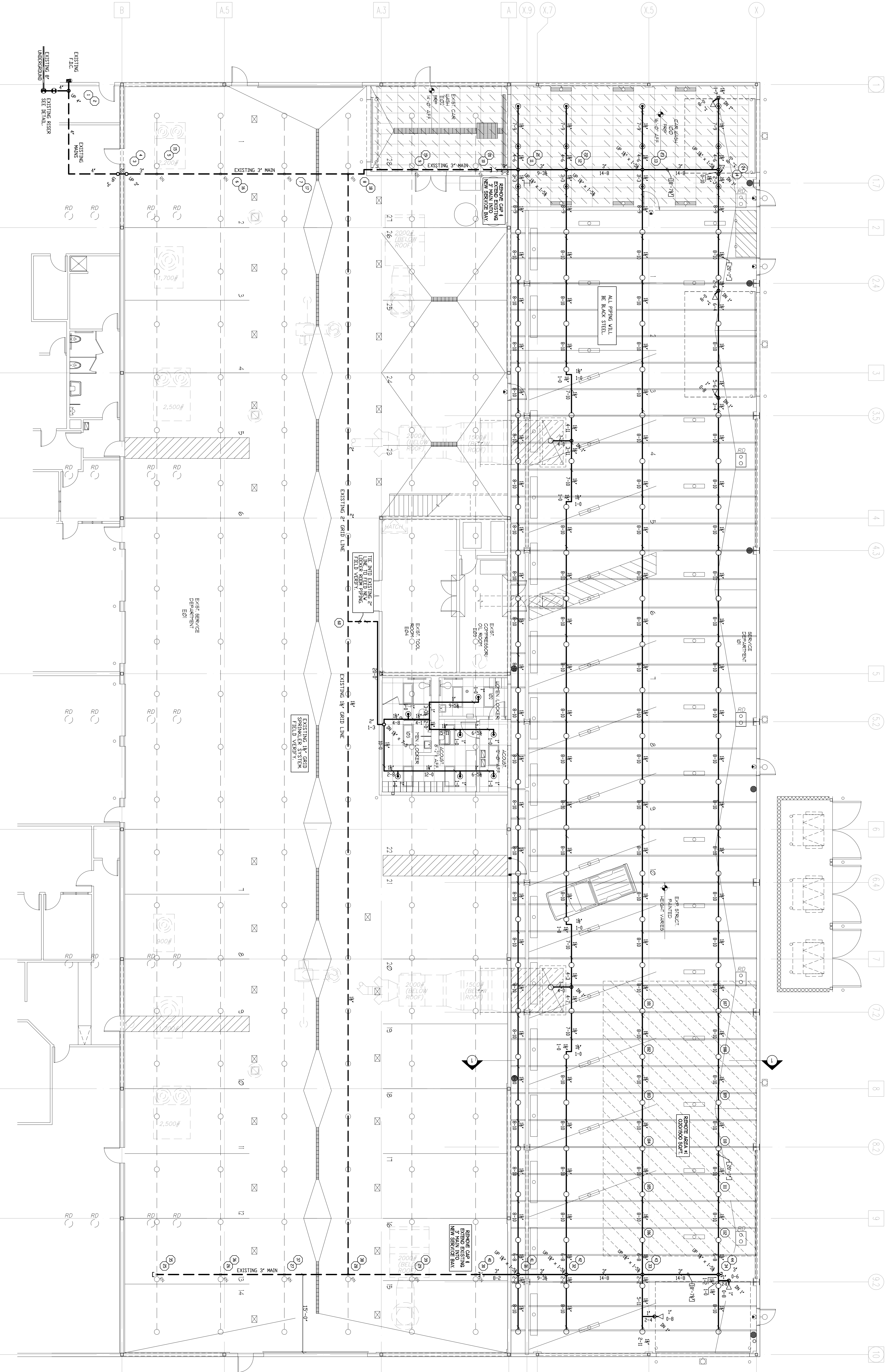
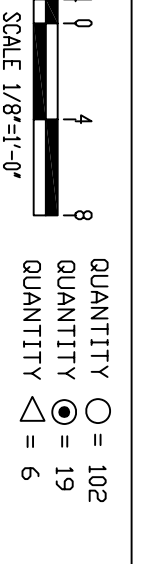


HYDRAULIC DESIGN DATA	
System & Area	#1 - #1
No. of Sprinklers	12
Density	0.20 GPM
Design Area	1530 SQ.FT.
Water Allowance	550 GPM
Water Flow Rate	572 GPM
Residual Pressure at Base of Riser	56 PSI
at 24' Rise of Water	53.43 PSI



GROUND FLOOR FIRE PROTECTION



REVISIONS	NOTES	SPRINKLER TYPE	IDENTIFICATION NO.	MFG.	ESC.	MODEL	FINISH	ORIFICE	TEMP.	SYMBOL	QUANT.
1.		QUICK RESP. UPRIGHT K=5.4	TV 1431	TTCO	N/A	TF-7FB	BRSS	3/4"	155°	○	102
2.		QUICK RESP. UPRIGHT K=5.4	TV 2231	TTCO	SEM-MEC	TF-7FB	WHITE	1/2"	155°	○	19
3.		QUICK RESP. SIDEWALL K=5.4	TV 3331	TTCO	N/A	TF-7FB	WHITE	1/2"	155°	○	6
HEAD COUNT											
127											
STANDARD SYMBOLS											
<ul style="list-style-type: none"> ○ - POST INDICATOR VALVE ◇ - KEY VALVE △ - FIRE INHIBIT ▽ - FIRE DEPT. CONNECTION ◇ - O.S. & Y GATE VALVE ◇ - SWING CHECK VALVE ◇ - NEW UNDERGROUND ◇ - EXIST. UNDERGROUND 											
STANDARD SYMBOLS											
<ul style="list-style-type: none"> ○ - MAIN CHECK VALVE ○ - RISER W/MAIN VALVE ○ - RISER W/DRY VALVE ○ - RISER W/ELEC. FLOW SWITCH ○ - RISER W/RELUC. VALVE ○ - WATER MOTOR BELL ○ - TESTING BELL ○ - TESTING BELL CONNECTION 											
INSPECTIONS											
1.											
2.											
3.											
4.											
RESPONSIBLE MANAGING SUPERVISOR 2448											
CONTRACTOR LICENSE #95											
FIRE PROTECTION PLAN											
BERLIN CITY TOYOTA											
191 RIVERSIDE STREET											
PORTLAND, MAINE 04103											
FREEDOM FIRE PROTECTION, INC.											
209 QUAKER RIDGE ROAD											
CASCO, MAINE 04015											
JOB No.	MODE#7										
DATE	3/22/12										
DRAWN BY	MAN										
SCALE	AS NOTED										
SHEET No.											
		FP-1012									