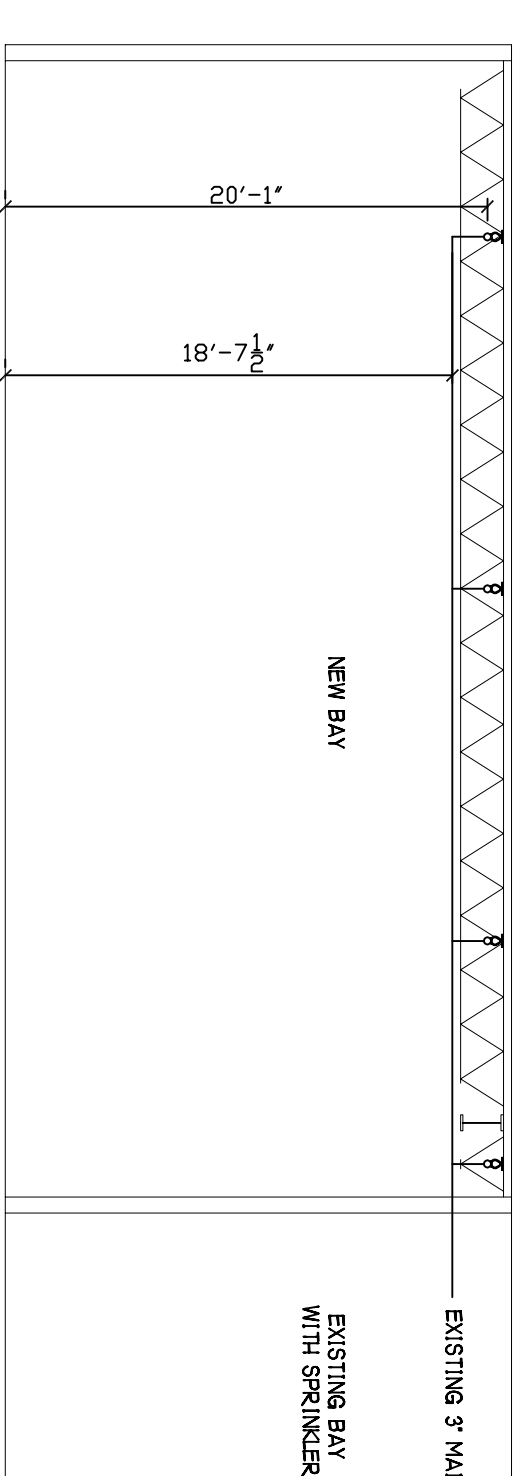


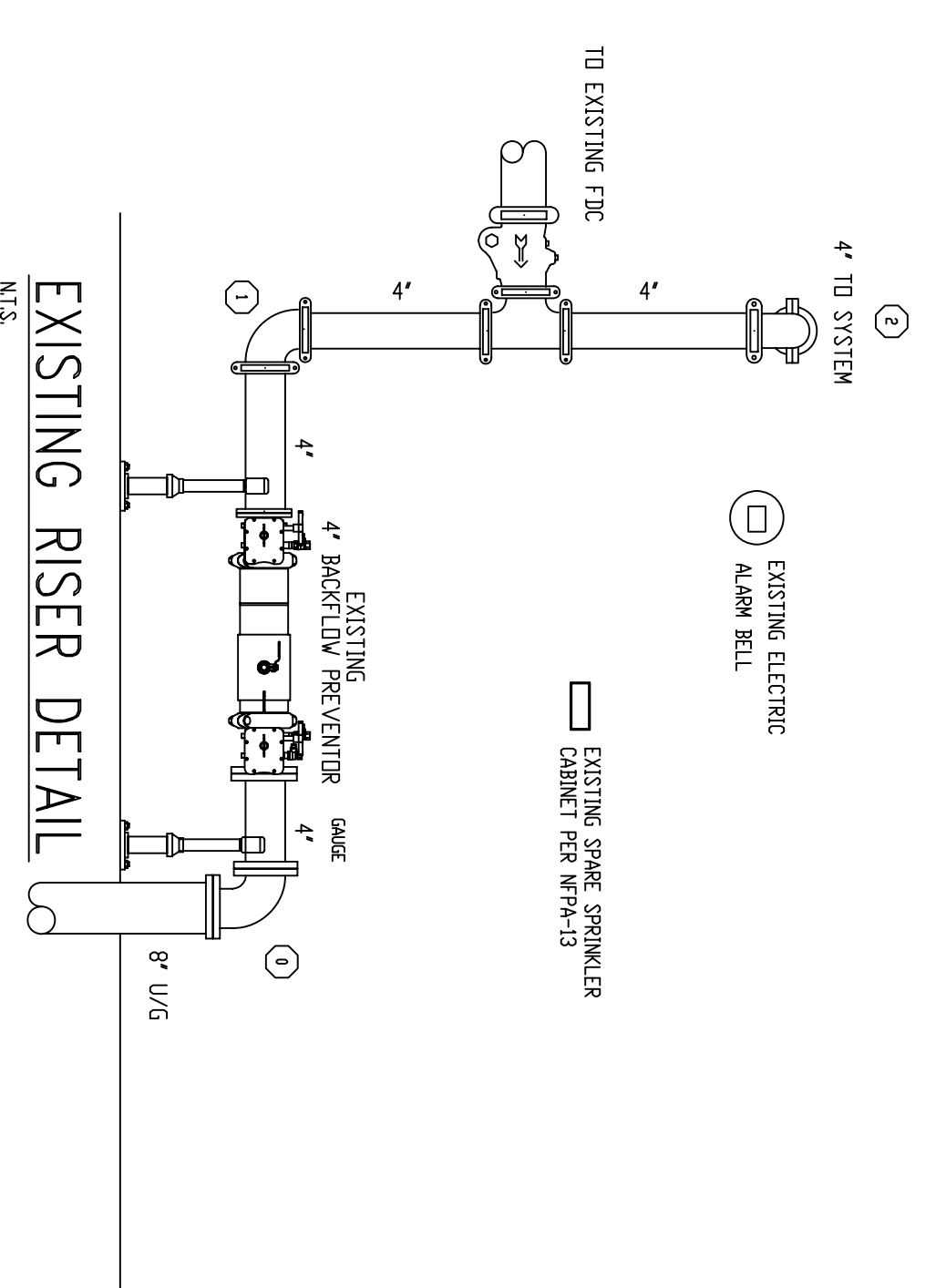
FIRE SPRINKLER GENERAL NOTES

OCCUPANCY: CAR DEALERSHIP
 DESIGN STANDARD: NFPA-13 2010
 DESIGN DENSITY: 0.20 GPM/1500 SQ.FT.
 SPRINKLERS UPRIGHT: TYCO (AS NOTED ON PLAN)
 SPRINKLERS PENDENT: TYCO (AS NOTED ON PLAN)
 ESCUTCHEONS: WHITE 2 PIECE SEMI-REC.
 PIPING 1"-1 1/4": SCH. 40 BLACK STEEL WITH THREADED ENDS.
 PIPING 2"-6": SCH. 10 BLACK STEEL WITH GROOVED ENDS.
 HANGERS TO BE U.L. & FM APPROVED.
 AND SPACED PER NFPA-13
 ALL PIPING TO BE TESTED AT 200 PSI FOR 2 HOURS.
 PROVIDE TAMPER SWITCH ON ALL CONTROL VALVES.
 PROVIDE HYDRAULIC NAME PLATE PER NFPA-13.
 COORDINATE FIRE SPRINKLER PIPING WITH OTHER TRADES.
 ⊕ DENOTES HYDRAULIC REFERENCE POINTS.
 ⊕ DENOTES GROOVED COUPLING IN PIPE.
 RN = RISER NIPPLE.
 SG = SPRIG.
 DN = DROP NIPPLE.
 GC = GROOVED COUPLING.
 TOE = THREAD ONE END.
 GBE = GROOVE BOTH ENDS.



SECTION VIEW
 SCALE 1/8"=1'-0"

FLOW TEST DATA	
STATIC PRESSURE	82 PSI
RESIDUAL PRESSURE	79 PSI
QUANTITY FLOWING	398 GPM
TWO HYDRANT TEST	
SEPT. 8, 2004 PORTLAND WATER DISTRICT	



EXISTING RISER DETAIL
 N.T.S.



SITE PLAN
 SCALE 1"=60'

REVISIONS	NOTES	SPRINKLER TYPE	IDENTIFICATION NO.	MFG.	ESC.	HEAD COUNT	MODEL	FINISH	ORIFICE	TEMP.	SYMBOL	QUANT.
TOTAL SPRINKLERS THIS DRAWING												

STANDARD SYMBOLS	
⊕	POST INDICATOR VALVE
⊕	KEY VALVE
⊕	FIRE HYDRANT
⊕	FIRE DEPT. CONNECTION
⊕	O.S. & Y GATE VALVE
⊕	SWING CHECK VALVE
⊕	NEW UNDERGROUND
⊕	EXIST UNDERGROUND

STANDARD SYMBOLS	
⊕	ALARM CHECK VALVE
⊕	RISER W/ALARM VALVE
⊕	RISER W/DRY VALVE
⊕	RISER W/ELEC. FLOW SWITCH
⊕	RISER W/RELIEF VALVE
⊕	WATER MOTOR BELL
⊕	ELECTRIC BELL
⊕	FRESH AIR FIRE DEPT. CONNECTION

INSPECTIONS	
1.	
2.	
3.	
4.	
RESPONSIBLE MANAGING SUPERVISOR 3448	
CONTRACTOR LICENSE #295	

BERLIN CITY TOYOTA
 191 RIVERSIDE STREET
 PORTLAND, MAINE 04103

FIRE PROTECTION PLAN

FREEDOM FIRE PROTECTION, INC.
 209 QUAKER RIDGE ROAD
 CASCO, MAINE 04015

JOB No. MODEL7
 DATE 5/27/12
 DRAWN BY MAN
 SCALE AS NOTED

SHEET No.
 FP-1012