

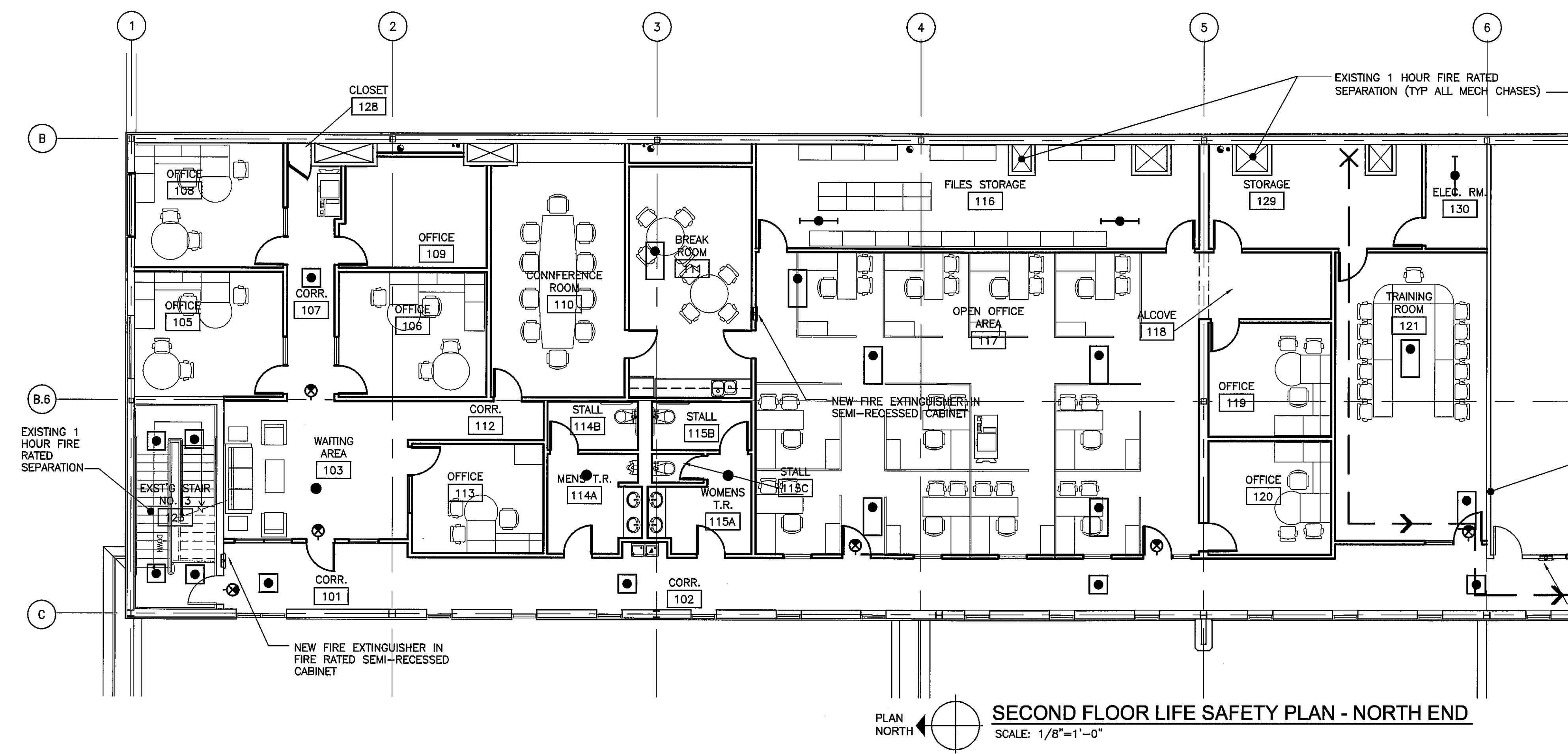


SIMPSON ASSOCIATES
 ARCHITECT
 3280 Edgewood Park Dr.
 Commerce, Michigan 48382
 248-360-7821

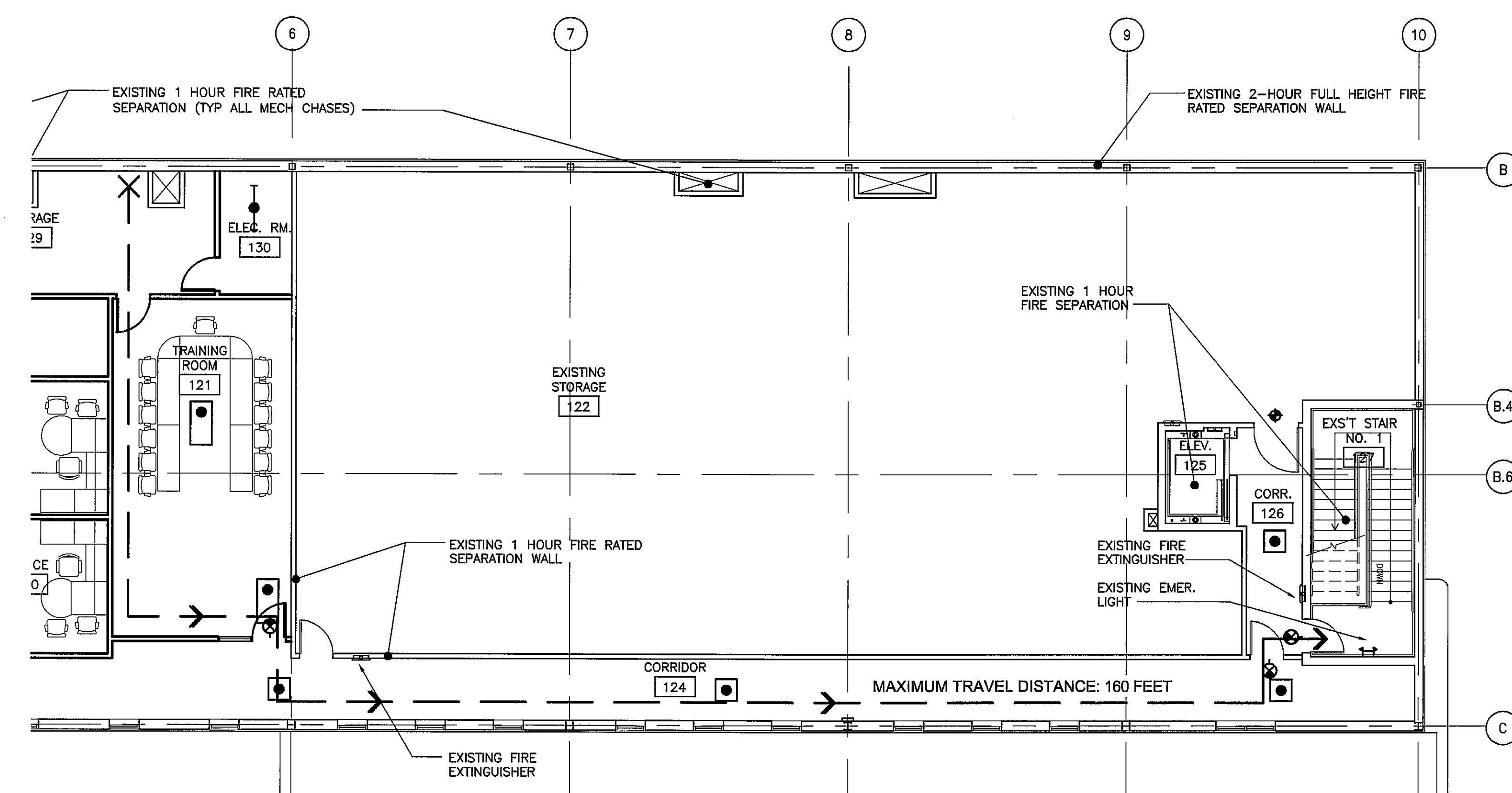
David R. Gebhardt Architect
 Professional Corporation
 203 W. Michigan Ave. Salline, MI 48176 (734) 429-5130



Construction Manager
Frank Baxter General Contractor, Inc.
 3225 Avenue N
 Fort Madison, IA 52627
 319-372-7285



SECOND FLOOR LIFE SAFETY PLAN - NORTH END
 SCALE: 1/8"=1'-0"



SECOND FLOOR LIFE SAFETY PLAN - SOUTH END
 SCALE: 1/8"=1'-0"

- LIGHTING LEGEND**
- 2'x2' RECESSED FLUORESCENT FIXTURE WITH EMERGENCY BATTERY BACKUP
 - 2'x4' RECESSED FLUORESCENT FIXTURE WITH EMERGENCY BATTERY BACKUP
 - PENDANT MOUNTED STRIP FLUORESCENT FIXTURE WITH EMERGENCY BATTERY BACKUP
 - RECESSED DOWNLITE WITH EMERGENCY BATTERY BACKUP
 - ⊗ EXIT LIGHT

NOTE:
 SEE ORIGINAL CODE STUDY SHEET "CS" FOR FIRST FLOOR EXITING (INCLUDED FOR REFERENCE ONLY)

Category	IBC - 2003	Code Requirements	NFPA 101-2000	Code Requirements	Proposed
References					
Use Group	304.1	B - Business (Office, Showroom) S1 - Storage 1, Mod. Haz. (Service Area) S2 - Storage 2, Low Haz. (Parts Storage)	3.3.134.3 3.3.134.14 3.3.134.2	New Business Occupancy Existing Assembly incidental to Business Existing	Renovated Area Existing Existing
Building Construction	Table 601	Type IIB Unprotected Non-combustible	NFPA 220	Unprotected Non-combustible, Type II (000)	
Height & Area Limitations	Table 503	Area: see building area calculation Height: B & S2: 4 stories, 50' Height: S1: 3 stories, 50'			B & S2: 2 stories/ 31' existing S1: 1 story/23' existing 39,187 sq existing bldg, 7,612 sq renovated area
Height Modifications		Existing, see original code summary sheet CS, attached for reference			
Area Modifications		Existing, see original code summary sheet CS, attached for reference			
Maximum allowable height		Existing, see original code summary sheet CS, attached for reference			
Maximum allowable area		Existing, see original code summary sheet CS, attached for reference			
Fire Ratings	Table 601	Structure frame: 0 hr Bearing Walls Exterior: 0 hr Bearing Walls Interior: 0 hr 1019.1 1019.4 Table 1016.1 Table 602 Table 601 Table 601 Table 601			0 hr 0 hr 0 hr Fire resistance of exit enclosures: 1 hr, 1 hr, 1 hr Vertical Opening rating: 1 hr, 1 hr Exit access corridors: NR (sprinkler) 0 hr 0 hr 0 hr 0 hr
Separation of Use	1019.1	Shown as indicated by 1 hr, per exception to 302.3.2, separated use groups. B to S1: 2 hr, B to S2: 1 hr, S1 to S2: 2 hr	6.1.14.1 26.1.2.3 (Exc #2)	Reference specific occupancy chapters for requirements Fire separation of occupancies not required when sprinklered.	B to S1: 2 hrs, B to S2: 1 hr, S1 to S2: 2 hr
Specific Occupancy Areas	302.11	Furnace rooms: 1 hr or sprinkler with smoke partitions 302.11 Storage > 1000sf: 1 hr or sprinkler with smoke partitions			sprinklered with smoke partitions sprinklered with smoke partitions
Opening Protectives	715.3 715.3	At the shaft & exit enclosures: 1 hr At other 1 hr. Separation assemblies: 3/4 hr.		At the vent opens: 1 hr, at the horiz open: 3/4 hr.	1 hr 3/4 hr
Fire Damper Rating	716.3	1 hr assembly; 1.5 hr.			no fire dampers required
Wall & Ceiling Finishes	Table 603.5 (sprinklered) Table 603.5 (sprinklered) Table 603.5 (sprinklered)	Vertical exits & exit passageways: Class C Exit access corridors & other exitways: Class C Rooms & enclosed spaces: Class C	7.1.4 26.3.2.2	Interior finish of walls Class A or B Class A, B or C in occupied areas	Class A for new work Class A for new work Class A for new work
Floor Finish Requirements	804.5.1 804.5.1 804.5.1	Vertical exits & exit passageways: Class II Exit access corridors & other exitways: Class II Rooms & enclosed spaces: DOC FF-1			Class II for new work Class II for new work Class II for new work
Means of Egress	1016.1 1016.1 1016.3 1016.3	Length of travel: < 250' Min. number of exits: 2 Dead ends: < 50' (sprinklered) Common path of travel: < 100' (sprinklered)	38.2.6 17.2.2.1.1 38.2.5.2 38.2.5.3	Travel distance to exits < 300' Min. number of exits: 2 Dead ends: < 50' Common path of travel: 100' max	Less than 250' see plan 2 provided, see plan Less than 50' see plan Less than 100' see plan
Occupant Load	Table 1004.1.2 Table 1004.1.2	Business: 1 per 100 gross sf Accessory storage & mechanical equipment rooms: 1 per 300 gross sf	7.3.1.2 7.3.1.2		71 for second floor 19 for second floor
2nd Floor Egress	1005.1 1005.1	Egress width cap: 0.15/occupant at doors and corridors (sprinklered) Egress width cap: 0.2/occupant at stairs (sprinklered)		Capacity factor at level components: 0.2"	18" req'd, 7/2" provided 27" req'd, 7/8" provided
1st Floor Egress	1008.1.1 1009.1 1016.2	Min. door opening width: 32" Min. stair width: 44" Min. Corridor Width: 36"	7.2.1.2.3 17.2.2.1.1 12.2.3.5	Min. door opening width: 32" Min. stair width: 44" Min. corridor width: 44"	34" doors (clear width) 44" stairs 48" corridors
Emergency Lighting	1011.1 1006	Exit Signs Required Emergency lighting is required	7.10.1.2 7.8.1.1	Exit Signs Required Emergency lighting is required	Provided Provided
Fire Suppression Systems	903	Required			Provided
Fire Alarm Systems	907	Not required			Provided
Automatic Fire Detection	907	Not required			Provided
Smoke Detectors	907	Not required			Provided
Extinguishment requirements	906.1	Portable fire extinguishers shall be installed per International Fire Code.	38.3.5	Required	Provided

PROJECT :



EXECUTIVE OFFICE LAYOUT
 191 RIVERSIDE
 PORTLAND, MAINE

DATE: 11.12.07
 11.16.07

ISSUED FOR:
 90% REVIEW
 PERMIT

SHEET NO. :

LIFE SAFETY INFORMATION

LS-1