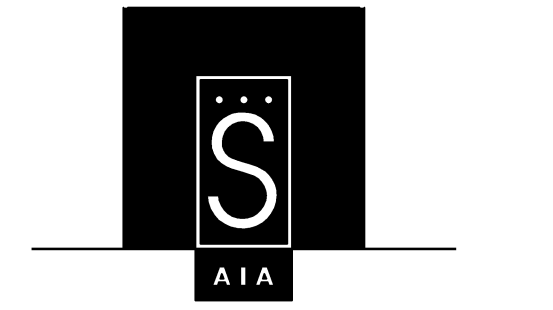
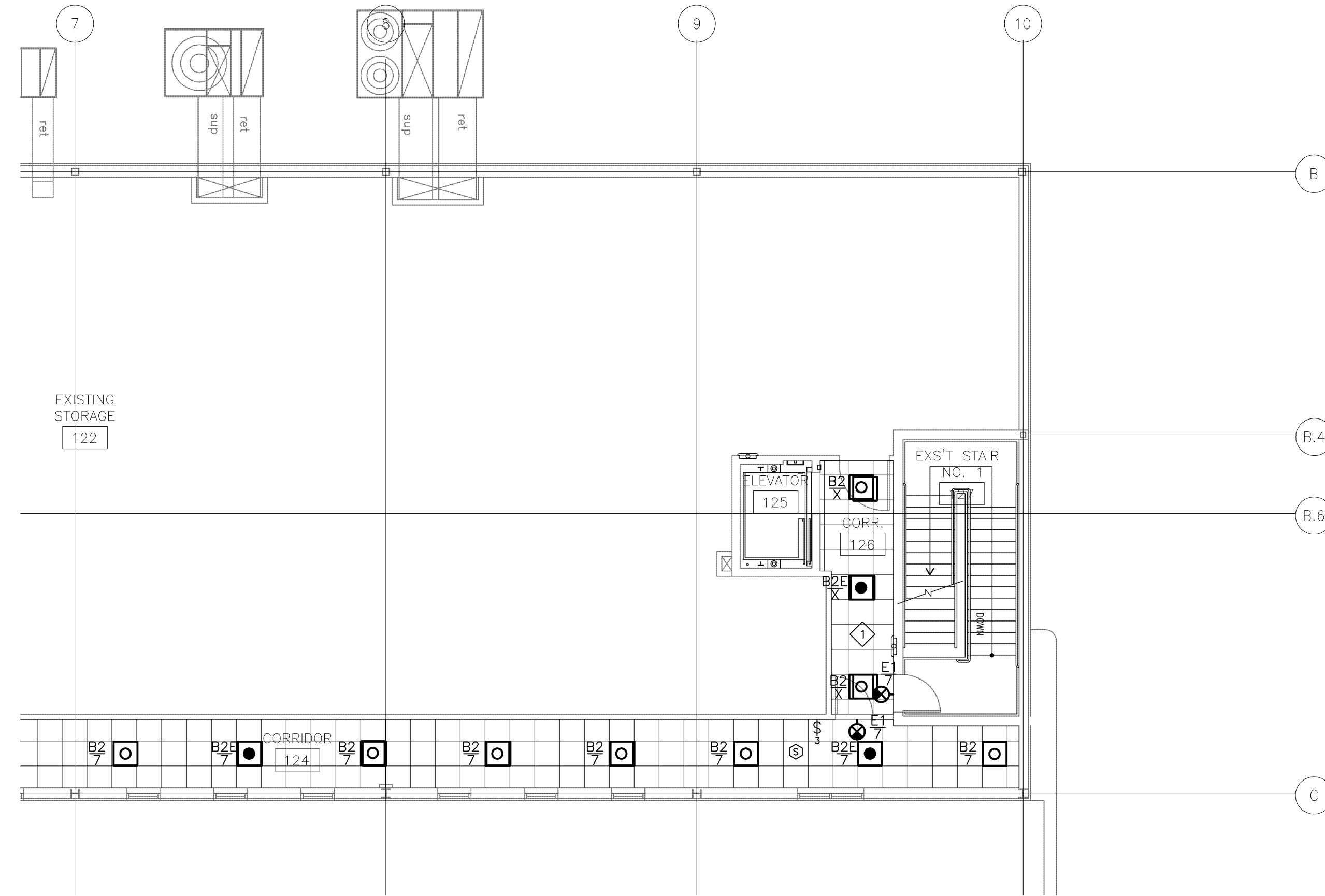


**NOTES FOR THIS DRAWING**

CONNECT NEW ELEVATOR LOBBY LIGHTING TO EXISTING CIRCUITS AND SWITCHING.



**SIMPSON ASSOCIATES**  
 ARCHITECT  
 3280 Edgewood Park Dr.  
 Commerce, Michigan 48382  
 248-360-7821

**David R. Gebhardt** Architect  
 Professional Corporation  
 203 W. Michigan Ave. Saline, MI 48176 (734) 429-513

**DUNHAM**  
 Dunham Associates, Inc.  
 50 South Sixth Street 7 Suite 1100  
 Minneapolis, Minnesota 55402-1540  
 PHONE 612.465.7550 FAX 612.465.7551  
 WEB dunhameng.com  
 mechanical + electrical consulting engineering

**B**  
 Construction Manager  
**Frank Baxter General Contractor, Inc.**  
 3225 Avenue N  
 Fort Madison, IA 52627  
 319-372-7285

PROJECT :

**VISTA**  
 Auto Group

EXECUTIVE OFFICE LAYOUT  
 191 RIVERSIDE  
 PORTLAND, MAINE

DATE:	ISSUED FOR:
11.12.07	90% REVIEW
11.16.07	PERMIT

SHEET TITLE :  
**ELECTRICAL LIGHTING PLAN**

SHEET NO. :  
**E101**