

SIMPSONASSOCIATES

ARCHITECT
3280 Edgewood Park Dr.
Commerce, Michigan 48382
248-360-7821

David R. Gebhardt Architect
Professional Corporation
203 W Michigan Ave, Saline, MI 48176 (734) 426-5130



Dunham Associates, Inc.
80 South State Street / Suite 1100
Madison, WI 53703
Phone: 608.462.9550 Fax: 608.462.9551
www.dunhaminc.com
mechanical • electrical consulting engineering



Construction Manager
Frank Baxter General Contractor, Inc.
3225 Avenue N
Fort Madison, IA 52627
319-372-7285

PROJECT :



EXECUTIVE OFFICE LAYOUT
191 RIVERSIDE
PORTLAND, MAINE

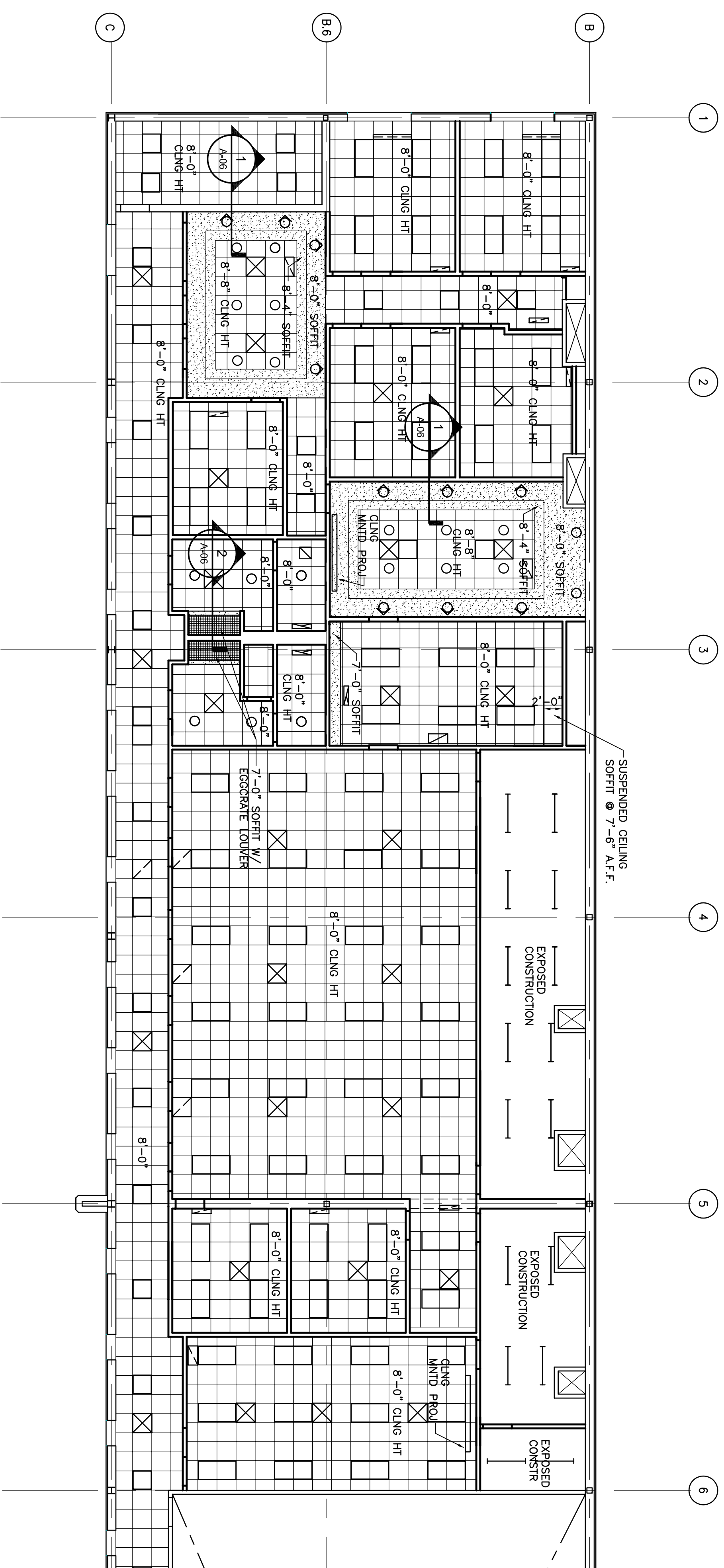
DATE:	ISSUED FOR:
11-12-07	90% REVIEW
11-16-07	PERMIT

SHEET TITLE :

REFLECTED
CEILING PLAN

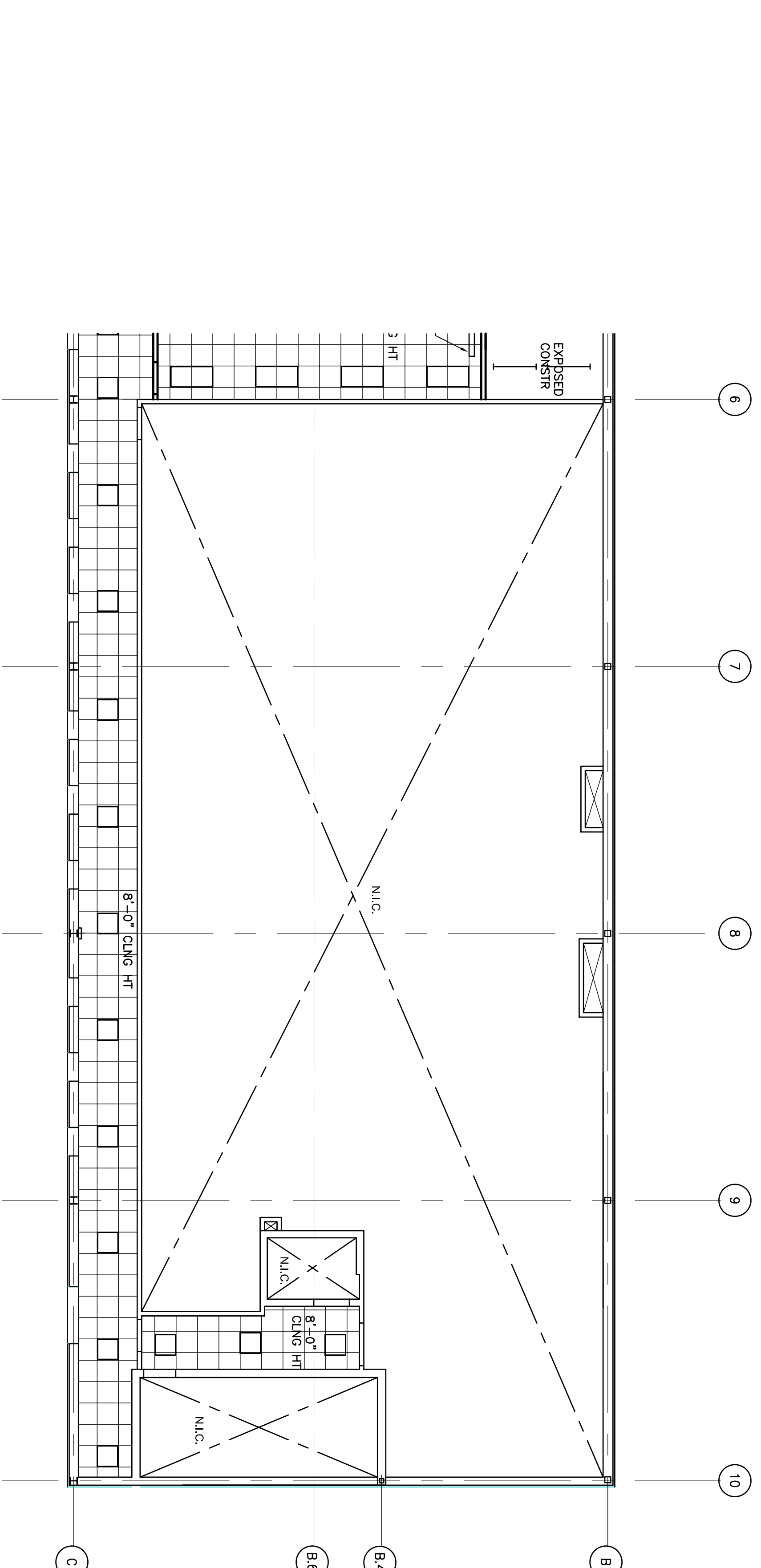
SHEET NO. :

A-02



PLAN NORTH
SCALE: 1/8"=1'-0"

SECOND FLOOR REFLECTED CEILING PLAN - NORTH END



PLAN NORTH
SCALE: 1/8"=1'-0"

SECOND FLOOR REFLECTED CEILING PLAN - SOUTH END