

SIMPSONASSOCIATES

ARCHITECT

3280 Edgewood Park Dr.
Commerce, Michigan 48382
248-360-7821

David R. Gebhardt Architect
Professional Corporation
203 W. Michigan Ave. Sibley, MI 48176 (734) 428-5190



Dunham Associates, Inc.
90 South State Street / Suite 1100
Ann Arbor, MI 48106
Phone: 734.663.8500
Fax: 734.663.9551
www.dunhaminc.com
mechanical • electrical consulting engineering



Construction Manager
Frank Baxter General Contractor, Inc.
3225 Avenue N
Fort Madison, IA 52627
319-372-7285

PROJECT :



EXECUTIVE OFFICE LAYOUT
191 RIVERSIDE
PORTLAND, MAINE

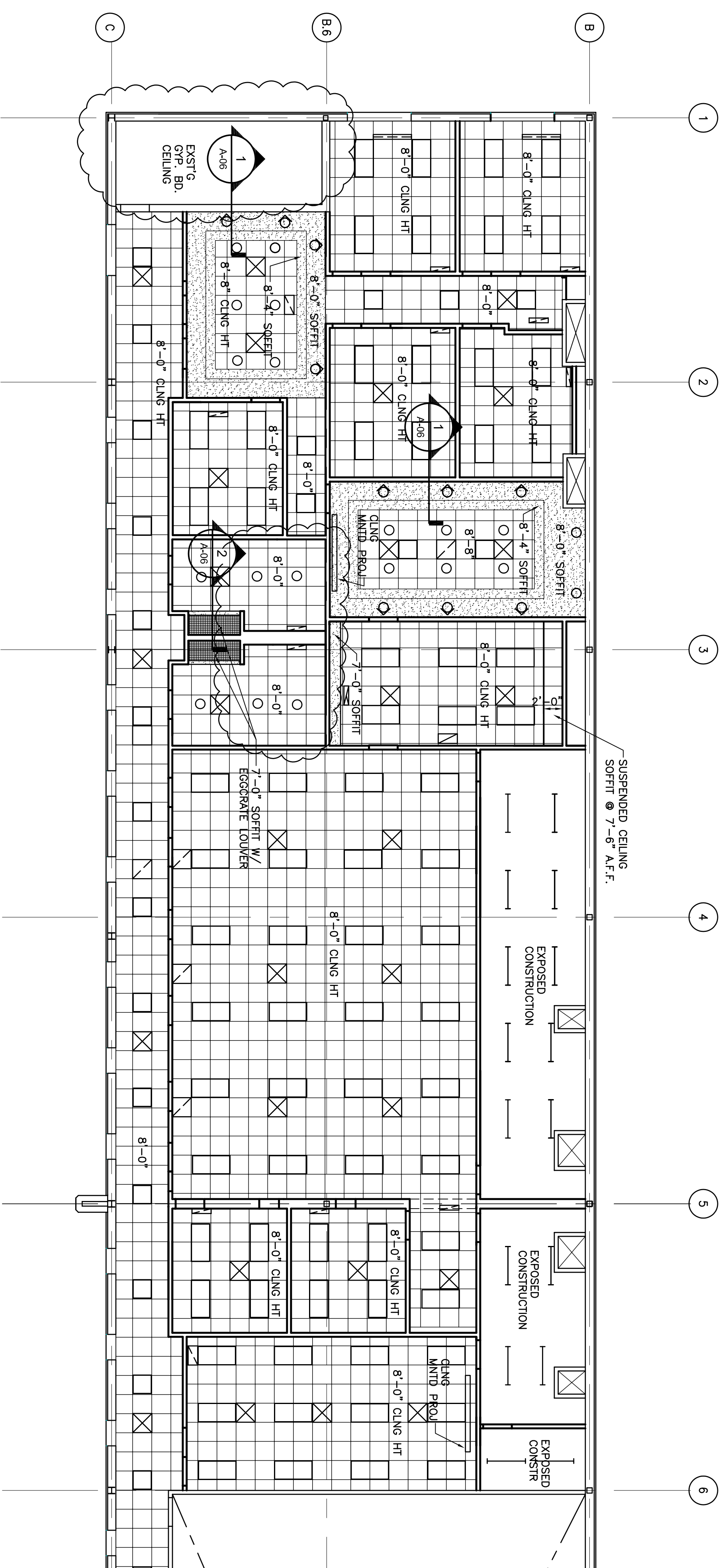
DATE:	ISSUED FOR:
11.12.07	90% REVIEW
11.16.07	PERMIT
11.28.07	ADDENDUM NO 1

SHEET TITLE :

REFLECTED
CEILING PLAN

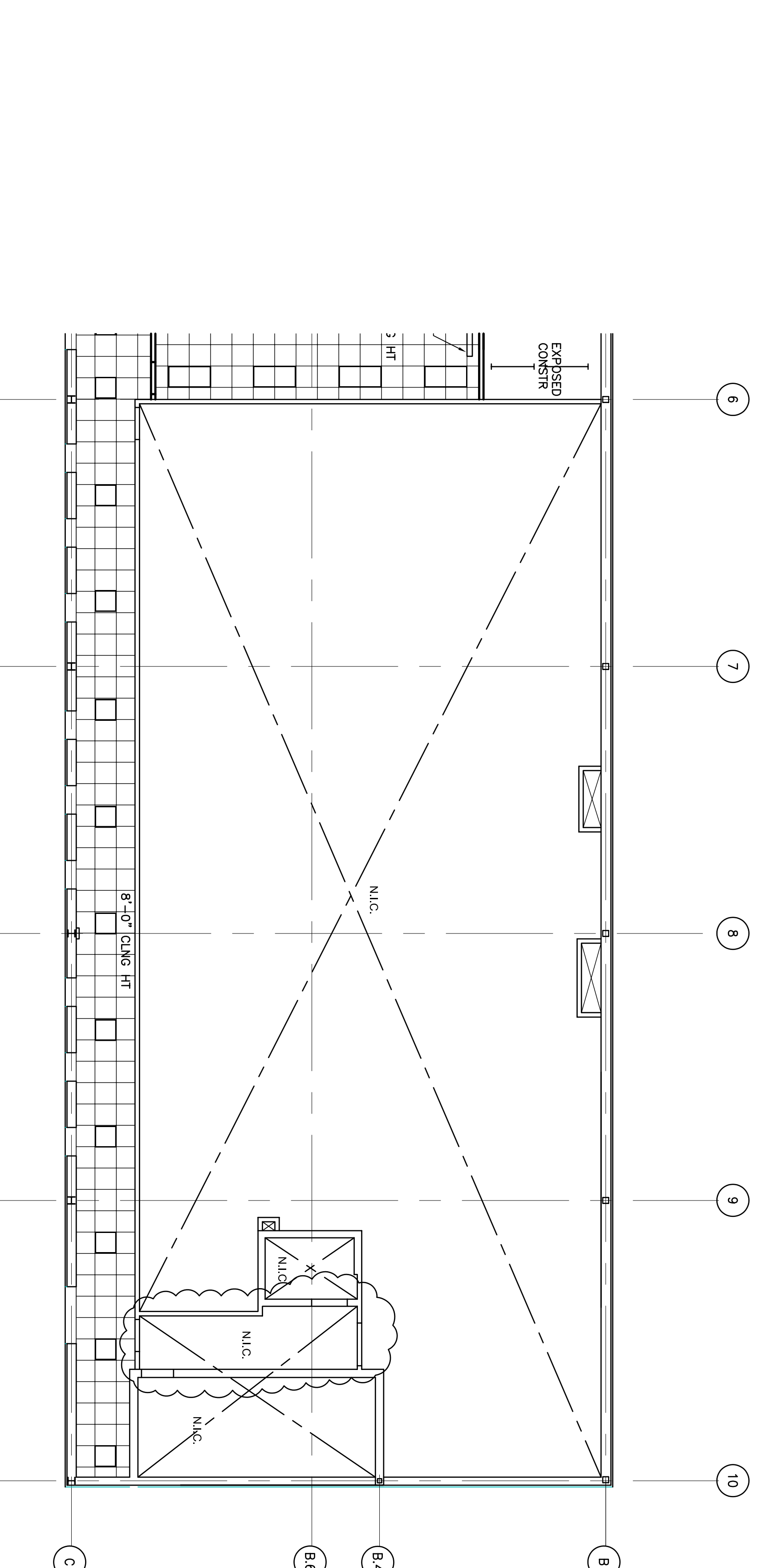
SHEET NO. :

A-02



PLAN NORTH
SCALE: 1/8"=1'-0"

SECOND FLOOR REFLECTED CEILING PLAN - NORTH END



PLAN NORTH
SCALE: 1/8"=1'-0"

SECOND FLOOR REFLECTED CEILING PLAN - SOUTH END