



SIMPSON ASSOCIATES

ARCHITECT

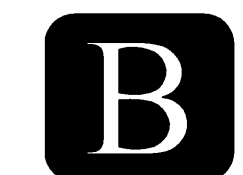
3280 Edgewood Park Dr.
Commerce, Michigan 48382
248-360-7821

David R. Gebhardt Architect

Professional Corporation
203 W. Michigan Ave. Saline, MI 48176 (734) 429-5193



Dunham Associates, Inc.
59 South Sixth Street / Suite 1100
Minneapolis, Minnesota 55402-1540
PHONE 612.465.7550 FAX 612.465.7551
WEB dunhaminc.com
mechanical + electrical consulting engineering



Construction Manager
Frank Baxter General Contractor, Inc.
3225 Avenue N
Fort Madison, IA 52627
319-372-7285

PROJECT :



EXECUTIVE OFFICE LAYOUT
191 RIVERSIDE
PORTLAND, MAINE

DATE: ISSUED FOR:

11.12.07 90% REVIEW

11.16.07 PERMIT

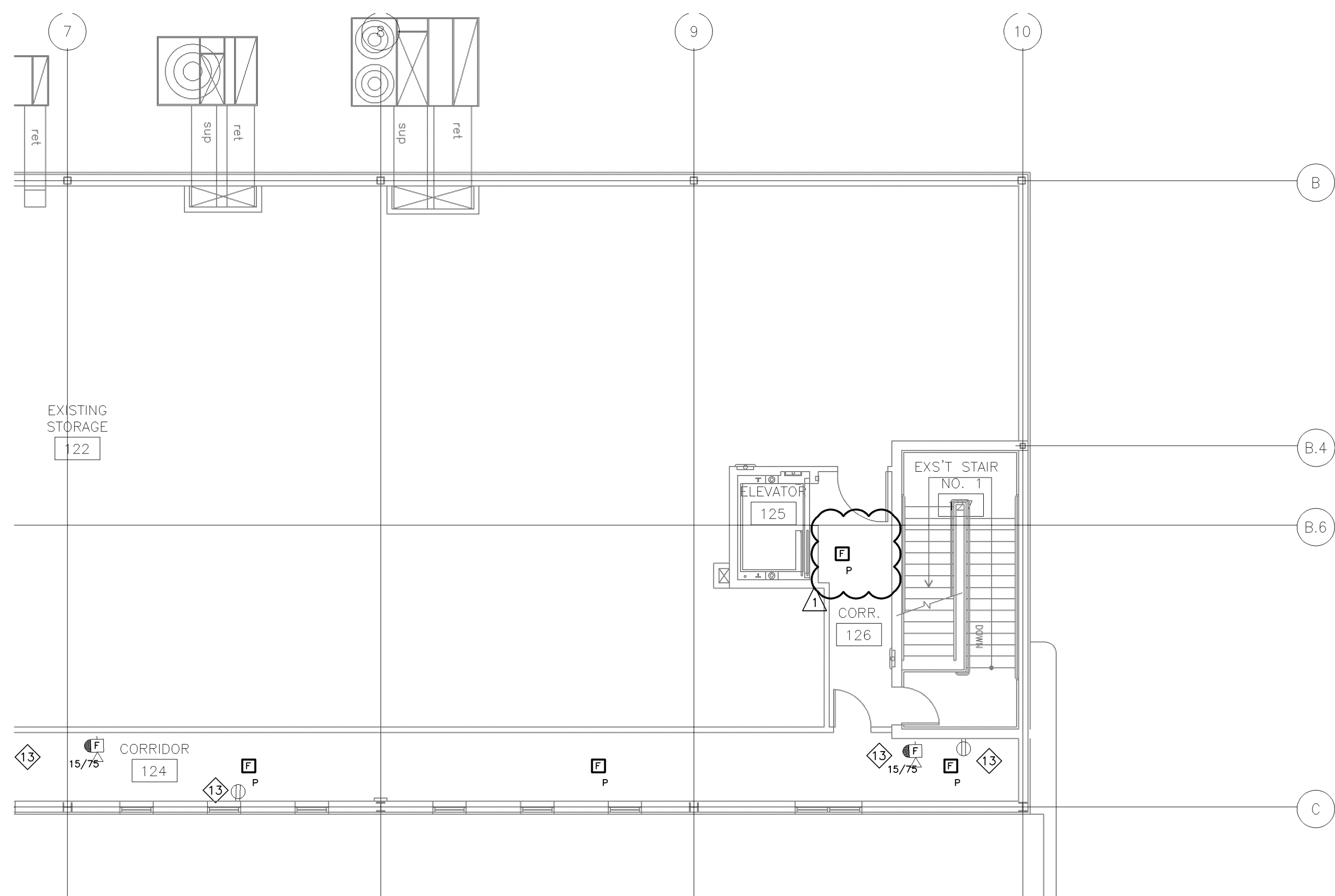
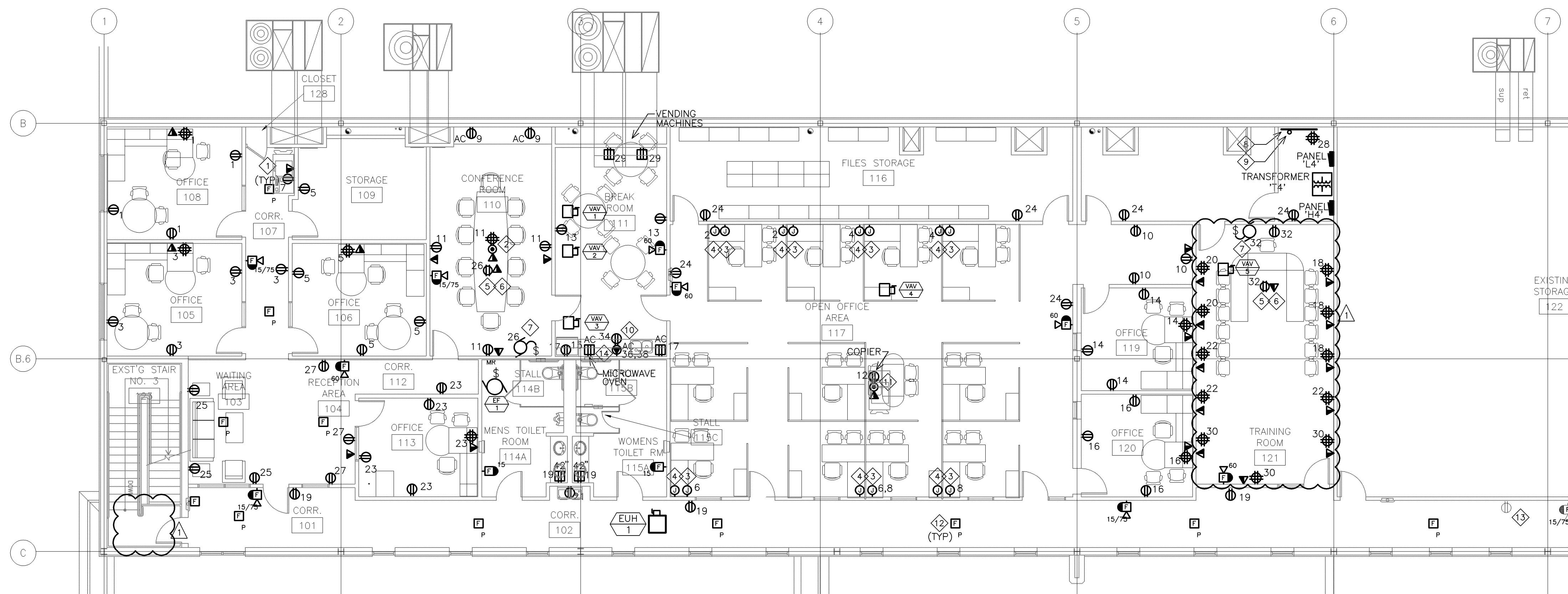
11.28.07 ADDENDUM #1

SHEET TITLE :

**ELECTRICAL
POWER
AND SIGNAL
PLAN**

SHEET NO. :

E201



NOTES FOR THIS DRAWING

- 1. ROUTE A 3/4" CONDUIT FROM COMMUNICATION JUNCTION BOX TO AN ACCESSIBLE AREA ABOVE CEILING FOR FUTURE DATA CABLING. PROVIDE A BUSHING AT THE END OF THE CONDUIT SUB. INSTALLATION OF DATA CABLING BY OTHERS. SEE DETAIL 1/E309 FOR ADDITIONAL DIRECTION.
- 2. INSTALL A WALKER RC9 QUAD SERIES "POKE-THRU" FLOOR BOX FOR POWER AND DATA OUTLETS. VERIFY EXACT LOCATION OF FLOOR BOX WITH OWNER/ARCHITECT PRIOR TO CORE DRILLING.
- 3. INSTALL A DATA SYSTEMS JUNCTION BOX AT 12" AFF FOR EXTENSION OF DATA CABLING TO OFFICE FURNITURE. THE DIVISION 16 CONTRACTOR SHALL BE RESPONSIBLE FOR MAKING A FLEXIBLE CONDUIT CONNECTION BETWEEN OUTLET BOX AND OFFICE FURNITURE. VERIFY ROUGH-IN LOCATION AND CONNECTION REQUIREMENTS WITH OFFICE FURNITURE SHOP DRAWING SUBMITTALS PRIOR TO ROUGH-IN.
- 4. INSTALL A POWER SYSTEMS JUNCTION BOX AT 12" AFF FOR EXTENSION OF POWER WIRING TO OFFICE FURNITURE. THE DIVISION 16 CONTRACTOR SHALL BE RESPONSIBLE FOR MAKING A FLEXIBLE CONDUIT CONNECTION BETWEEN OUTLET BOX AND OFFICE FURNITURE. VERIFY ROUGH-IN LOCATION AND CONNECTION REQUIREMENTS WITH OFFICE FURNITURE SHOP DRAWING SUBMITTALS PRIOR TO ROUGH-IN.
- 5. INSTALL A 20 AMP - 120 VOLT FLUSH MOUNTED CEILING OUTLET FOR CEILING MOUNTED PROJECTOR. VERIFY LOCATION OF PROJECTOR WITH OWNER/ARCHITECT PRIOR TO ROUGH-IN.
- 6. INSTALL A FLUSH MOUNTED DATA OUTLET FOR CEILING MOUNTED PROJECTOR. VERIFY LOCATION OF PROJECTOR WITH OWNER/ARCHITECT PRIOR TO ROUGH-IN.
- 7. PROVIDE CONNECTION TO ELECTRICALLY OPERATED PROJECTOR SCREEN AND ASSOCIATED CONTROL SWITCH. VERIFY WIRING REQUIREMENTS WITH EQUIPMENT SHOP DRAWING SUBMITTALS.
- 8. PROVIDE AND INSTALL A 3/4" - 4'X8' FIRE RATED PLYWOOD BACKBOARD FOR DATA DISTRIBUTION EQUIPMENT. PAINT BACKBOARD TO MATCH ROOM COLOR.
- 9. ROUTE AN EMPTY 2" CONDUIT BETWEEN NEW DATA BOARD LOCATION AND THE EXISTING TELECOMMUNICATIONS ROOM ON FIRST FLOOR. THE DIVISION 16 CONTRACTOR SHALL VISIT THE SITE PRIOR TO BIDDING TO IDENTIFY LOCATION OF EXISTING DATA ROOM AND ROUTING OF NEW CONDUIT.
- 10. PROVIDE A 120 VOLT - 20 AMP DEDICATED CIRCUIT FOR DISHWASHER. VERIFY ROUGH-IN REQUIREMENTS WITH EQUIPMENT SHOP DRAWING SUBMITTALS.
- 11. INSTALL A WALKER RC9 QUAD SERIES "POKE-THRU" FLOOR BOX WITH POWER AND DATA OUTLETS FOR COPIER. VERIFY EXACT LOCATION OF FLOOR BOX WITH OWNER/ARCHITECT PRIOR TO CORE DRILLING.
- 12. CONNECT THE NEW FIRE ALARM DEVICES TO THE EXISTING FIRE ALARM SYSTEM. THE EXISTING FIRE ALARM CONTROL CABINET IS A NOTIFIER-INTELLIGENT FIRE ALARM SYSTEM - MAINTAINED BY NORRIS INC. THE DIVISION 16 CONTRACTOR SHALL BE RESPONSIBLE FOR PROVIDING ANY ADDITIONAL POWER SUPPLIES AND CIRCUIT BOARDS FOR THE EXISTING FIRE ALARM CONTROL CABINET AS REQUIRED TO ACCOMMODATE THE ADDITIONAL DEVICES. THE DIVISION 16 CONTRACTOR SHALL BE RESPONSIBLE FOR PROVIDING ANY ADDITIONAL FIRE ALARM DEVICES ABOVE THOSE SHOWN ON THE CONTRACT DRAWINGS WHICH WOULD BE REQUIRED TO MEET LOCAL CODE REQUIREMENTS.
- 13. EXISTING DEVICE TO REMAIN.
- 14. PROVIDE A 208/1 VOLT-20 AMP POWER FEED FOR COFFEE BREWER. VERIFY EXACT POWER REQUIREMENTS WITH OWNER/ARCHITECT ONCE THE COFFEE BREWER IS SELECTED.

