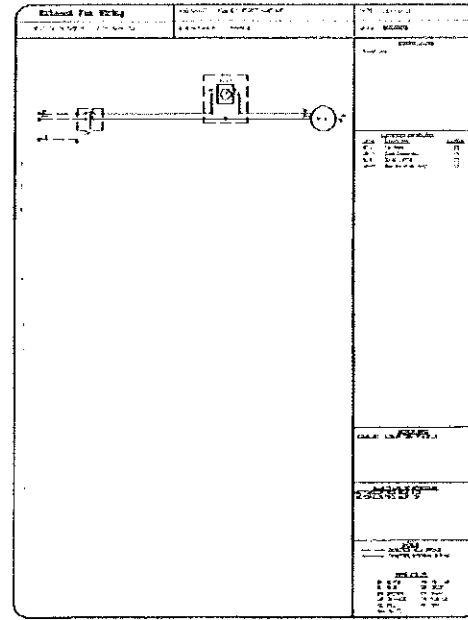
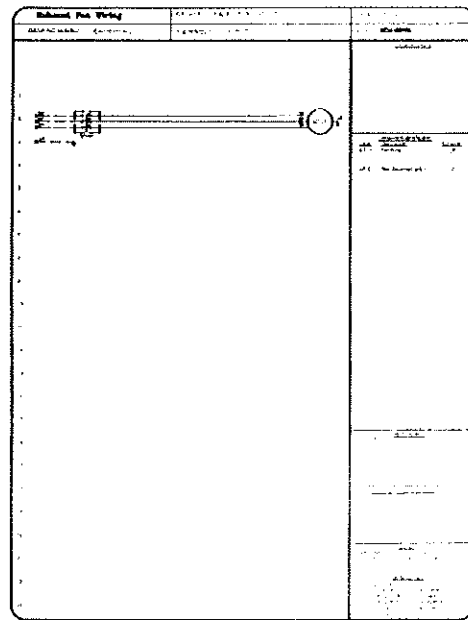
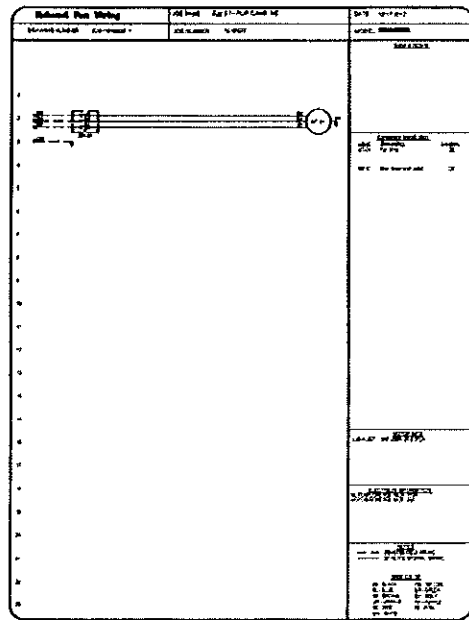
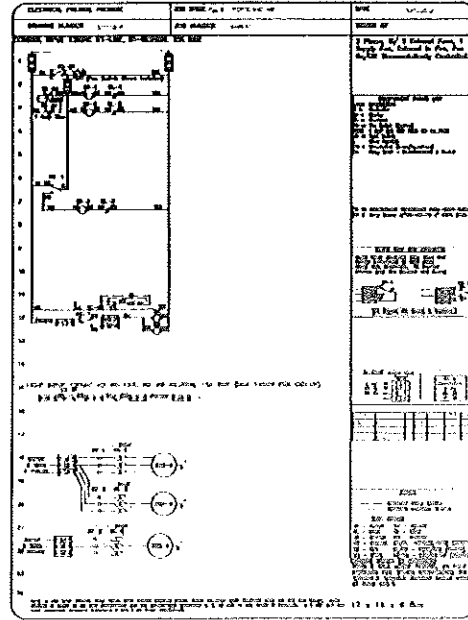
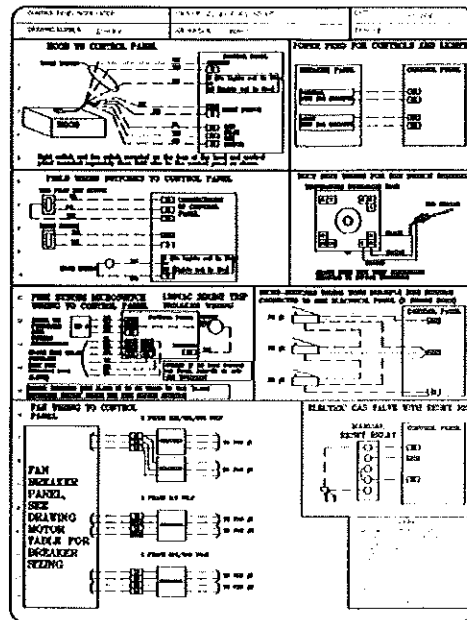
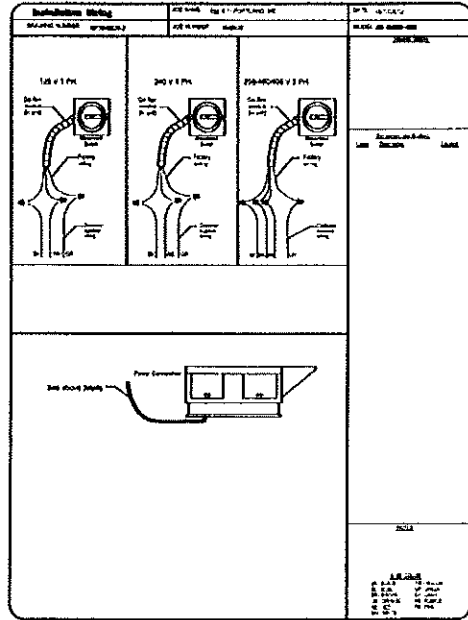


ELECTRICAL PACKAGING						
NO	TAG	PACKAGE #	LOCATION	QUANTITY		OPTION
				LOCATION	QUANTITY	
1	EC	MECHANICAL	Daily Cabinet Rpts	1 Unit	1 Unit	From On-Off Box D-48 (Previously Listed)



CAPTIVE

EGG & I
ARCHITECTURE

155 RIVERSIDE STREET
PORTLAND, MAINE 04103

DATE: 10/17/2012
DRAWN BY: [Name]
SCALE: 3/4" = 1'-0"
MASTER DRAWING

SHEET NO. 3

BC ENGINEERS
INCORPORATED

5728 Boulder Square, E. 06503 (617)862-1772

The Egg & I
Breakfast & Lunch
Howard Johnson Plaza Hotel

155 Riverside Street
Portland, Maine 04103

ICON:
ARCHITECTURE

5111 Westport Road
Kansas City, MO 64111
p.816.221.0250 f.816.221.0251

ISSUE DATE: 11/01/12
PROJECT NUMBER: 2012-42
SHEET NUMBER: MECHANICAL HOODS

M5