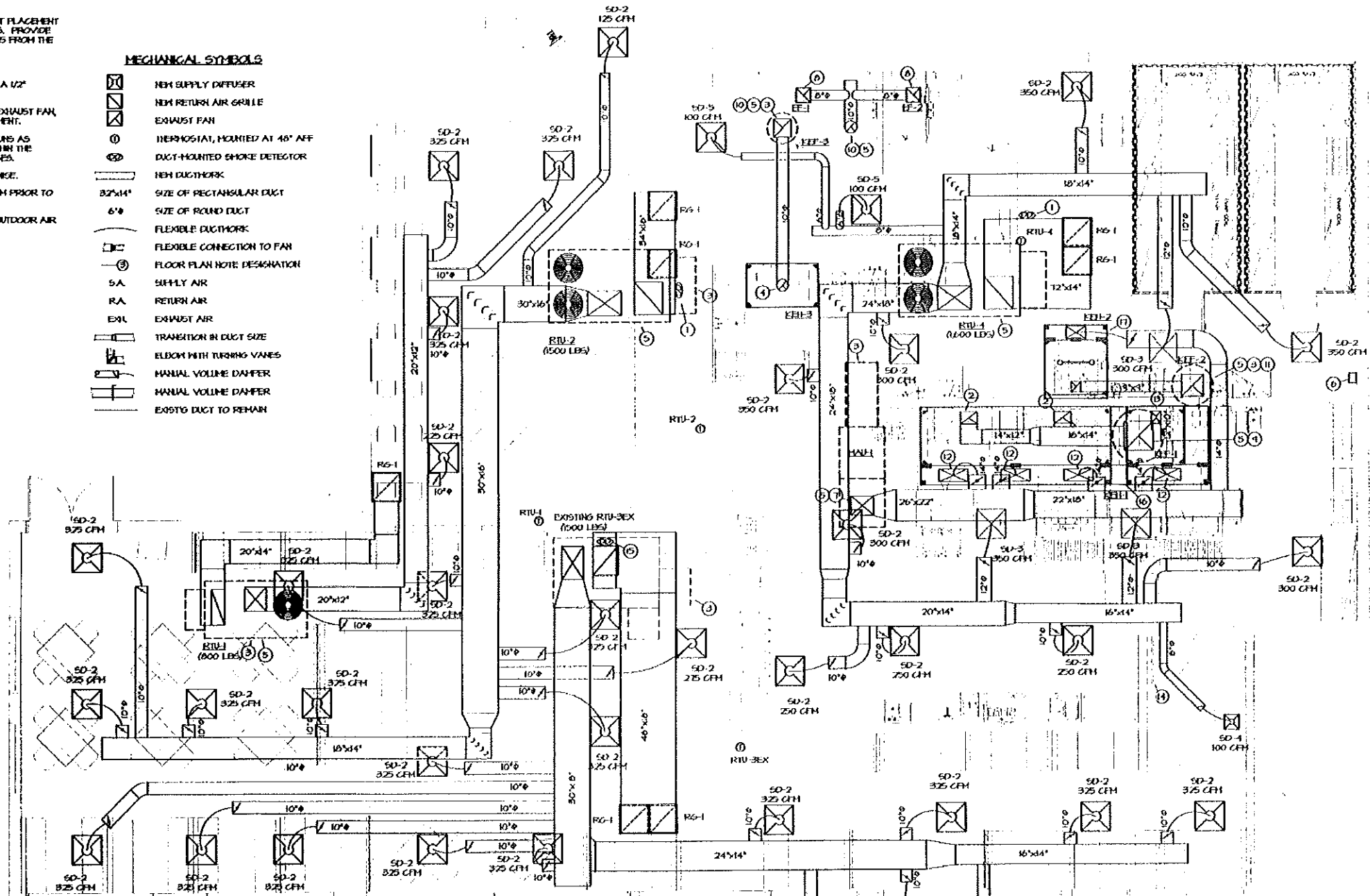


**GENERAL NOTES:**

- REFER TO ARCHITECTURAL & SHELL BUILDING DRAWINGS FOR EXACT PLACEMENT OF EXHAUST FANS, ETC. & ADDITIONAL STRUCTURAL REQUIREMENTS. PROVIDE ADDITIONAL STEEL AS REQUIRED TO PROPERLY SUPPORT SYSTEMS FROM THE STRUCTURE.
- INSTALL ALL DUCT, PIPE ETC. AS HIGH AS POSSIBLE.
- DUCT SIZES SHOWN ARE ACTUAL SHEETMETAL SIZES AND INCLUDE A 1/2" ALLOWANCE FOR DUCT LINER WHERE APPLICABLE.
- PROVIDE FLEXIBLE CONNECTION BETWEEN DUCTWORK AND EACH EXHAUST FAN, ROOFTOP UNIT, MAKE-UP AIR UNITS AND OTHER MOTORIZED EQUIPMENT.
- COORDINATE ALL WORK WITH OTHER TRADES & EXISTING CONDITIONS AS REQUIRED TO PROPERLY INSTALL ALL SYSTEMS AS INTENDED, WITHIN THE CONFINES OF THE SPACES AVAILABLE, AND WITHOUT INTERFERENCES.
- ALL DUCTWORK SHALL BE CONCEALED UNLESS INDICATED OTHERWISE.
- CONTRACTOR TO VERIFY STRUCTURAL LOADS ON BUILDING SYSTEM PRIOR TO INSTALLATION OF ANY INSTALLATION OF NEW EQUIPMENT.
- VERIFY 10'-0" CLEARANCE FROM ALL EXHAUST OUTLETS TO ANY OUTDOOR AIR INTAKES.

**MECHANICAL SYMBOLS**

- NEW SUPPLY DIFFUSER
- NEW RETURN AIR GRILLE
- EXHAUST FAN
- THERMOSTAT, MOUNTED AT 48" AFF
- DUCT-MOUNTED SMOKE DETECTOR
- NEW DUCTWORK
- SIZE OF RECTANGULAR DUCT
- SIZE OF ROUND DUCT
- FLEXIBLE DUCTWORK
- FLEXIBLE CONNECTION TO FAN
- FLOOR PLAN NOTE DESIGNATION
- SUPPLY AIR
- RETURN AIR
- EXHAUST AIR
- TRANSITION IN DUCT SIZE
- ELBOW WITH TURNING VANES
- MANUAL VOLUME DAMPER
- EXISTG DUCT TO REMAIN



**MECHANICAL PLAN NOTES:**

- LOCATION OF DUCT MOUNTED SMOKE DETECTOR.
- TRANSITION AND CONNECT 14"x12" GREASE EXHAUST TO TYPE I HOOD AS REQUIRED.
- MAINTAIN A MIN. OF 10'-0" CLEARANCE BETWEEN ALL OUTDOOR AIR INTAKES & EXH. FLUE OUTLETS.
- PROVIDE 10" ALUMINUM EXHAUST AND TRANSITION AND CONNECT TO TYPE II HOOD FOR DENT MACHINE AS REQUIRED. TRANSITION AND CONNECT TO EXHAUST FAN AS REQUIRED.
- CUT EXISTING ROOF AND FLASH INTO ROOF AS REQUIRED. ALL ROOFING WORK SHALL BE PERFORMED BY LANDLORD'S ROOFING CONTRACTOR (AT THIS CONTRACTOR'S EXPENSE) TO MAINTAIN EXISTING ROOF WARRANTY. VERIFY APPROVED ROOFING CONTRACTOR WITH LANDLORD PRIOR TO PERFORMING WORK. REFER TO DETAIL TO ANCHOR UNIT TO CURB.
- LOCATION OF MANUAL PULL STATION. VERIFY LOCATION WITH LOCAL FIRE MARSHAL PRIOR TO INSTALLATION.
- TRANSITION AND CONNECT MAKEUP AIR DUCT DOWN FROM ROOF AS REQUIRED.
- SUPPORT FAN FROM STRUCTURE AS REQUIRED.
- ROUTE 20"x16" GREASE EXH UP TO KEF-1 ON ROOF. TRANSITION AND CONNECT AS REQUIRED.
- ROUTE 10" EXHAUST DUCT UP THRU ROOF TO HEATER HEAD AS REQUIRED. VERIFY EXACT LOCATION OF OPENING PRIOR TO INSTALLATION.

**MECHANICAL PLAN NOTES: (CONT.)**

- PROVIDE 4"x4" GREASE DUCT FROM EXHAUST FAN DOWN TO TYPE I GREASE HOOD. ROUTE UP THRU ROOF TO KEF-2 ON ROOF. TRANSITION AND CONNECT AS REQUIRED. FAN DISCHARGE TO BE AT LEAST OR HIGHER THAN TOP OF PARAPET.
- TRANSITION AND CONNECT MAKEUP DUCT TO HOOD MAKE-UP CONNECTOR AS REQUIRED.
- TRANSITION AND CONNECT 12"x10" GREASE EXHAUST TO TYPE I HOOD AS REQUIRED.
- UNDERCUT DOOR AS REQUIRED TO ALLOW FOR PROPER RETURN AIR PATH
- VERIFY EXISTING DUCT MOUNTED SMOKE DETECTOR. INSTALL NEW IF NONE ARE PRESENT.
- PROVIDE STAINLESS STEEL PANEL TO FILL VOID BETWEEN HOODS. MECHANICALLY FASTEN TO HOOD. VERIFY EXACT SIZE.
- CONNECT CONTROL WIRE TO INTERIOR HEAT SENSOR IN KEH-2 WITH CONTROL PANEL AS REQUIRED BY THE MANUFACTURER.

**MECHANICAL FLOOR PLAN**  
SCALE: 1/4" = 1'-0"

This drawing has been prepared by the Engineer, or under his supervision. The drawing is provided as an indication of the proposed work and is not intended to be used for construction. It is the responsibility of the contractor to verify the accuracy of the drawing and to coordinate the work with the other trades. The Engineer is not responsible for any errors or omissions in this drawing.

**BC ENGINEERS INCORPORATED**  
5728 Boulder Highway, El Paso, TX 75206 (913)362-1772

**The EGG & I**  
Breakfast & Lunch  
Howard Johnson Plaza Hotel

155 Riverside Street  
Portland, Maine 04103

**ICON:**  
ARCHITECTURE

1511 Westport Road  
Kansas City, MO 64111  
p.816.221.0250 f.816.221.0251

ISSUE DATE 11/01/12	<b>MECHANICAL PLAN</b>
PROJECT NUMBER 2012-42	
SHEET NUMBER <b>M1</b>	
REVISIONS	