

Smoke

Heat

Horn/Strobe (C=ceiling)

Strobe

Pull

KEY NOTES

- 1. INSTALL DUPLEX RECEPTACLE AT TOP OF STORAGE UNIT FACING CEILING. MAXIMUM SPACING NOT TO EXCEED 150 BETWEEN RECEPTACLES. PROVIDE SWITCH RATED BRANCH CIRCUIT BREAKERS DEDICATED TO STORAGE UNIT RECEPTACLES.
- 2. INSTALL HALLWAY LIGHTING FIXTURES CENTERED IN FRONT OF STORAGE UNIT DOORS AT 10' O.C. TYPICAL THROUGHOUT.
- 3. INSTALL STORAGE UNIT LIGHTING FIXTURE INSIDE STORAGE UNIT FOR ALL UNITS GREATER THAN 100 FT² AND TWO IN UNITS GREATER THAN 200 FT² TYPICAL.
- 4. PROVIDE ELECTRICAL CONNECTION TO SUMP PUMP AND CONTROL PANEL PER MANUFACTURER'S WRITTEN RECOMMENDATION. FIELD VERIFY FINAL PUMP AND CONTROL PANEL ROUGH-IN LOCATION.
- 5. PROVIDE LOCKABLE FUSIBLE DISCONNECT FOR ELEVATOR CAB LIGHTS. PROVIDE 120V DEDICATED BRANCH CIRCUIT FOR CAB LIGHTS.
- 6. USE CABLE TO PHONE PUNCH DOWN PANEL FOR ELEVATOR CAR.
- 7. 2W3 - 3W1 C. TO ELEVATOR SHUNT TRIP IN DISCONNECT SWITCH. WIRE AUX. CONTACTS OF ALL HEAT DETECTORS IN ELEVATOR SHAFT IN PARALLEL. HEAT DETECTORS LOCATED IN TOP AND BOTTOM OF SHAFT.
- 8. PROVIDE 3 PHASE 480 VOLT CIRCUIT FOR ELEVATOR MOTOR AND CONTROLLER. ELEVATOR CONTROLLER SHALL HAVE SHUNT-TRIP TYPE FUSED DISCONNECT. FIELD COORDINATE CIRCUIT LOCATION, OVERCURRENT PROTECTION AND WIRE SIZING REQUIREMENTS WITH ELEVATOR SHOP DRAWINGS AND ADVISE ELECTRICAL PROVISIONS ACCORDINGLY.

GENERAL NOTES

- 1. REFERENCE SHEET E-001 FOR LEGENDS, ABBREVIATIONS SPECIFICATIONS AND NOTES.
- 2. REFERENCE SHEET E-002 FOR LIGHTING SCHEDULE.
- 3. E.C. SHALL PROVIDE ALL RACEWAYS FOR HVAC THERMOSTATS. PRIOR TO ROUGH-IN, COORDINATE EXACT REQUIREMENTS WITH M.C.
- 4. ALL EXIT SIGNS, EMERGENCY LIGHTING UNITS, AND NIGHT LIGHTS SHALL HAVE UNSWITCHED CIRCUIT OR CONNECT LIGHT TO NEAREST UNSWITCHED BRANCH LIGHTING CIRCUIT.
- 5. FIRE ALARM DEVICES SHOWN ARE DIAGRAMMATIC AND MAY NOT INDICATE TOTAL REQUIREMENTS. E.C. TO PROVIDE FINAL DESIGN AND RECEIVE APPROVALS FROM MHA. SEE SPECIFICATIONS ON SHEET E001.
- 6. ALL EXTERIOR LIGHT FIXTURES SHALL BE PHOTOCELL CONTROLLED WITH TIMECLOCK OVERRIDE.
- 7. PROVIDE OCCUPANCY SENSORS IN CEILING TO CONTROL HALLWAY AND UNIT LIGHTING WITH 15 MINUTE TIME DELAY. PROVIDE 80-100 WATT UNIVERSAL POWER PACKS WITH WATT STOPPER / LEGRANDS CX-100 SERIES PASSIVE INFRARED CEILING SENSORS. QUANTITIES AND LOCATIONS ON DRAWINGS ARE DIAGRAMMATIC. E.C. SHALL PROVIDE VENDOR SHOP DRAWINGS FOR APPROVAL FOR ALL LIGHTING CONTROLS AND SHALL BE RESPONSIBLE TO ADD OR ADJUST IN FIELD TO ENSURE LIGHTING FUNCTIONS PROPERLY AND HALLWAYS AND ROOMS HAVE NO DEAD SPOTS.



FACP
Knox Box

1 ELECTRICAL PLAN - FIRST FLOOR
SCALE 1/8" = 1'-0"

PORT

| No. | Date | Description |
|-----|------|-------------|
| | | |

MAINE PORTLAND & RIVERSIDE
160 RIVERSIDE STREET
PORTLAND, ME 04103
DATE: 17-21
BY: JDH
PROJECT: BUILDING PERMIT SET
DATE: JAN. 09, 2019

ELECTRICAL FIRST FLOOR PLAN

E100



Reviewed for Code Compliance
Permitting and Inspections Department
Approved with Conditions
02/14/2020

1/15/2019 3:54:04 PM



454 N 800 W, SLC, UT 84116
e: howdy@divelept.com
p: 801-480-4488
www.divelept.com



DG



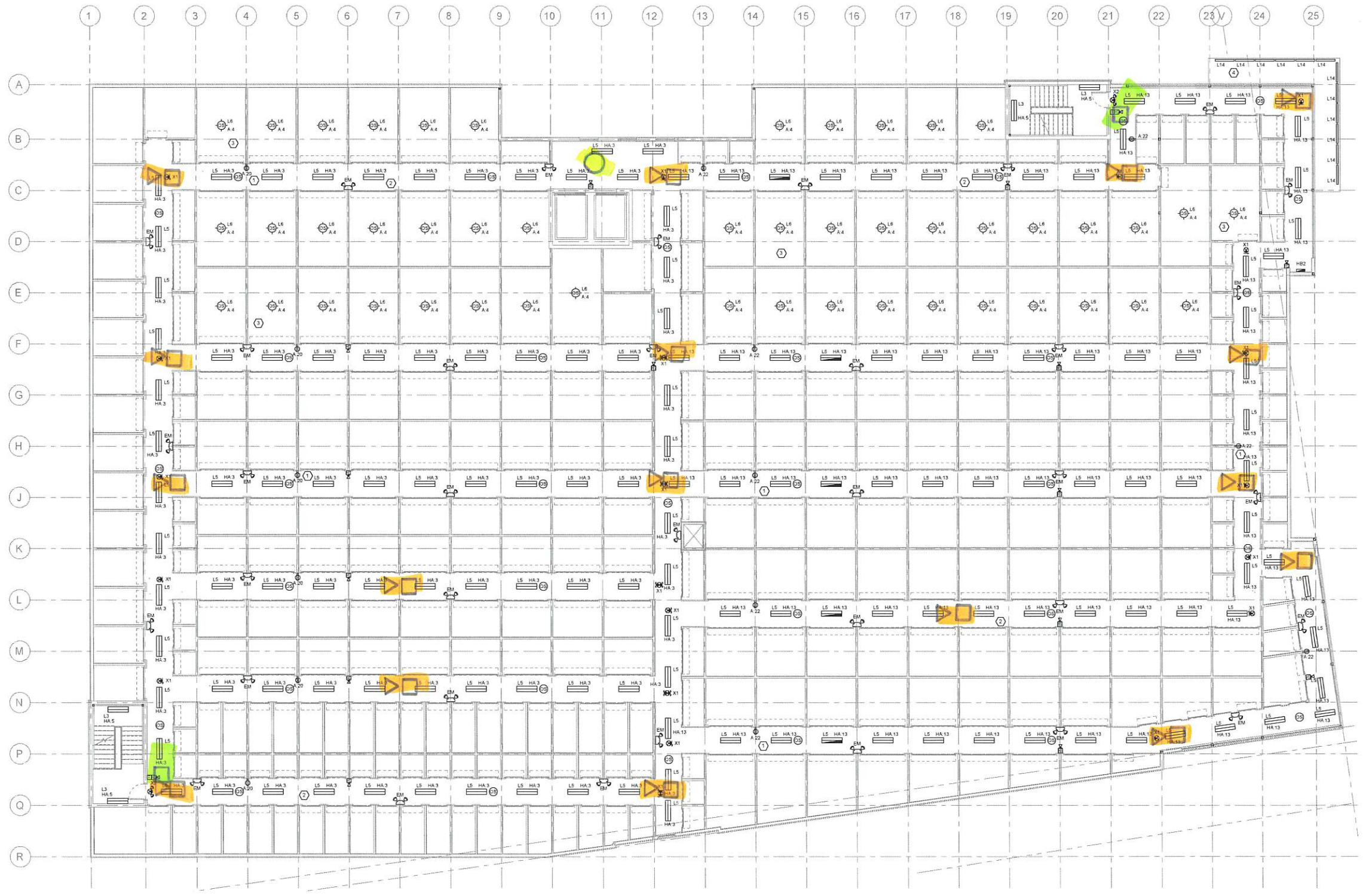
GODDARD & ASSOCIATES ENGINEERING
MEP Engineer
202 Tradeway Drive
Santa Rosa Beach
Florida 32459
P: 317.506.8101
E: gae@gaengineering.com

KEY NOTES:

- ① INSTALL DUPLEX RECEPTACLE AT TOP OF STORAGE UNIT FACING CEILING. MAXIMUM SPACING NOT TO EXCEED 150 BETWEEN RECEPTACLES. PROVIDE SWITCH RATED BRANCH CIRCUIT BREAKERS DEDICATED TO STORAGE UNIT RECEPTACLES.
- ② INSTALL HALLWAY LIGHTING FIXTURES CENTERED IN FRONT OF STORAGE UNIT DOORS AT 10' O.C. TYPICAL THROUGHOUT.
- ③ INSTALL STORAGE UNIT LIGHTING FIXTURE INSIDE STORAGE UNIT FOR ALL UNITS GREATER THAN 100 FT², AND TWO IN UNITS GREATER THAN 250 FT² TYPICAL.
- ④ MOUNT LIGHT IN CANOPY AT 45 DEGREES. CONTROL WITH TIMER LOCATED IN ELECTRICAL ROOM.

GENERAL NOTES:

- 1. REFERENCE SHEET E-001 FOR LEGENDS, ABBREVIATIONS, SPECIFICATIONS AND NOTES.
- 2. REFERENCE SHEET E-002 FOR LIGHTING SCHEDULE.
- 3. E.C. SHALL PROVIDE ALL RACEWAYS FOR HVAC THERMOSTATS. PRIOR TO ROUGH-IN, COORDINATE EXACT REQUIREMENTS WITH M.C.
- 4. ALL EXIT SIGNS, EMERGENCY LIGHTING UNITS, AND NIGHT LIGHTS SHALL HAVE UNSWITCHED CONDUCTOR. CORRECT LIGHT TO NEAREST UNSWITCHED BRANCH LIGHTING CIRCUIT.
- 5. FIRE ALARM DEVICES SHOWN ARE DIAGRAMMATIC AND MAY NOT INDICATE TOTAL REQUIREMENTS. E.C. TO PROVIDE FINAL DESIGN AND RECEIVE APPROVALS FROM AHJ. SEE SPECIFICATIONS ON SHEET E001.
- 6. ALL EXTERIOR LIGHT FIXTURES SHALL BE PHOTOCELL CONTROLLED WITH TIMELOCK OVERRIDE.
- 7. PROVIDE OCCUPANCY SENSORS IN CEILING TO CONTROL HALLWAY AND UNIT LIGHTING WITH 15 MINUTE TIME DELAY. PROVIDE 60-90 UNIVERSAL POWER PACKS WITH WATT STOPPER. LEGRANDS CX-100 SERIES PASSIVE INFRARED CEILING SENSORS. QUANTITIES AND LOCATIONS ON DRAWINGS ARE DIAGRAMMATIC. E.C. SHALL PROVIDE VENDOR SHOP DRAWINGS FOR APPROVAL FOR ALL LIGHTING CONTROLS AND SHALL BE RESPONSIBLE TO ADD OR ADJUST IN FIELD TO ENSURE LIGHTING FUNCTIONS PROPERLY AND HALLWAYS AND ROOMS HAVE NO DEAD SPOTS.



① ELECTRICAL PLAN - SECOND FLOOR
SCALE: 1/8" = 1'-0"

PORT

No. Date Description

MAINE PORTLAND & RIVERSIDE
180 RIVERSIDE STREET
PORTLAND, ME 04103
PROJECT NO. 17-31
DATE: JDH
ISSUE: BUILDING PERMIT SET
DATE: JAN. 09, 2019
DRAWN BY: [blank]
CHECKED BY: [blank]

ELECTRICAL SECOND FLOOR PLAN

E200
DWGLEFT DESIGN LLC



Reviewed for Code Compliance
Permitting and Inspections Department
Approved with Conditions
02/14/2020

1/9/2019 3:54:04 PM

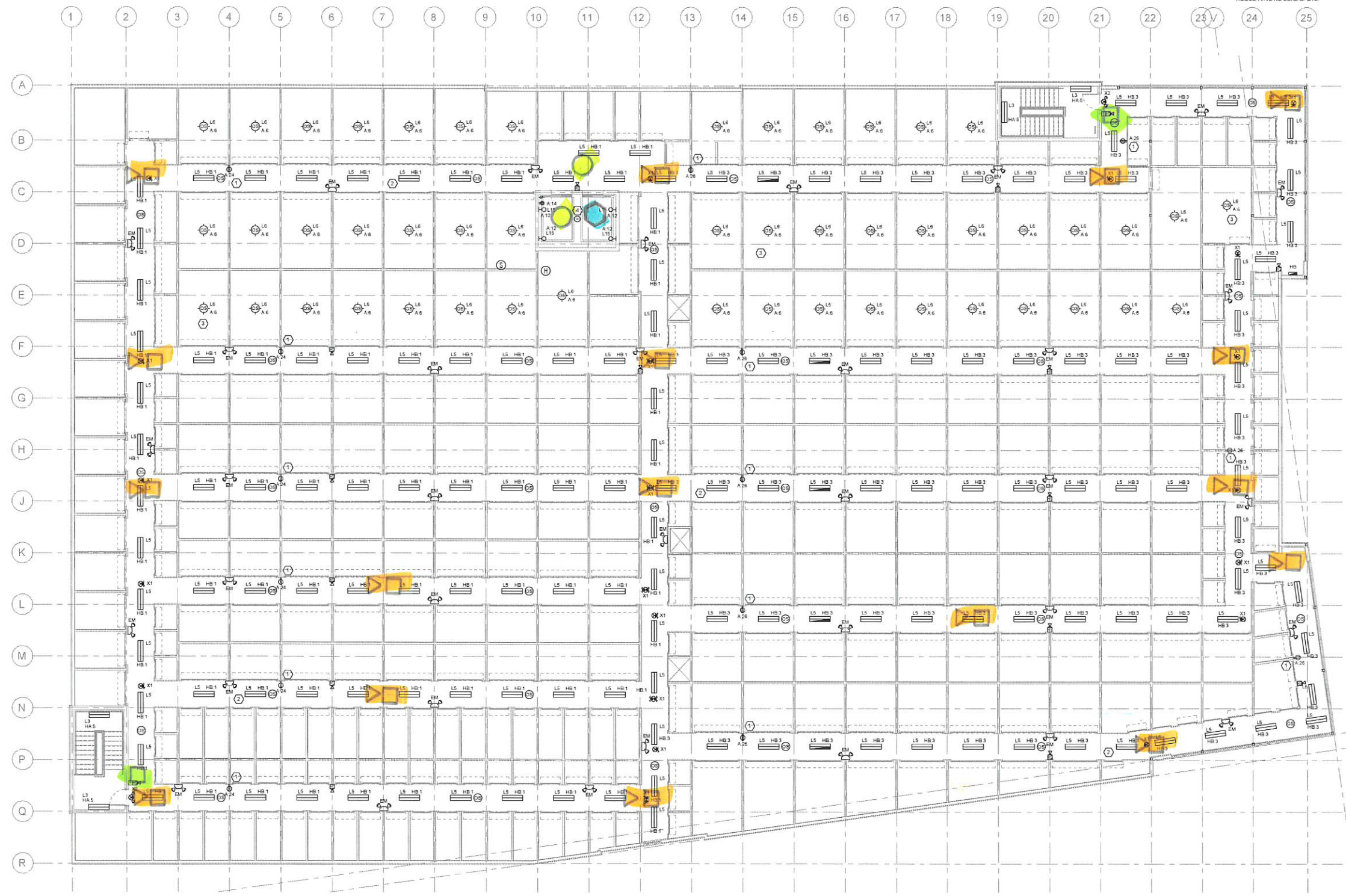
DUCT DETECTORS
FOR ROOF HVAC units

KEY NOTES:

1. INSTALL DUPLEX RECEPTACLE AT TOP OF STORAGE UNIT FACING CEILING. MAXIMUM SPACING NOT TO EXCEED 150' BETWEEN RECEPTACLES. PROVIDE SWITCH RATED BRANCH CIRCUIT BREAKERS DEDICATED TO STORAGE UNIT RECEPTACLES.
2. INSTALL HALLWAY LIGHTING FIXTURES CENTERED IN FRONT OF STORAGE UNIT DOORS AT 10' C/C. TYPICAL THROUGHOUT.
3. INSTALL STORAGE UNIT LIGHTING FIXTURE INSIDE STORAGE UNIT FOR ALL UNITS GREATER THAN 100 FT². AND TWO IN UNITS GREATER THAN 250 FT². TYPICAL.
4. 2#12 - 3#4 C. TO ELEVATOR SHAFT TRIP IN DISCONNECT SWITCH. WIRE AUX. CONTACTS OF ALL HEAT DETECTORS IN ELEVATOR SHAFT IN PARALLEL. HEAT DETECTORS LOCATED IN TOP AND BOTTOM OF SHAFT.

GENERAL NOTES:

1. REFERENCE SHEET E-001 FOR LEGENDS, ABBREVIATIONS, SPECIFICATIONS AND NOTES.
2. REFERENCE SHEET E-002 FOR LIGHTING SCHEDULE.
3. E.C. SHALL PROVIDE ALL RACEWAYS FOR HVAC THERMOSTATS. PRIOR TO ROUGH-IN. COORDINATE EXACT REQUIREMENTS WITH M.C.
4. ALL EXIT SIGNS, EMERGENCY LIGHTING UNITS, AND NIGHT LIGHTS SHALL HAVE LIGHTING CONDUCTOR CONNECT LIGHT TO NEAREST UNSWITCHED BRANCH LIGHTING CIRCUIT.
5. FIRE ALARM DEVICES SHOWN ARE DIAGRAMMATIC AND MAY NOT INDICATE TOTAL REQUIREMENTS. E.C. TO PROVIDE FINAL DESIGN AND RECEIVE APPROVALS FROM AHJ. SEE SPECIFICATIONS ON SHEET E001.
6. ALL EXTERIOR LIGHT FIXTURES SHALL BE PHOTOCELL CONTROLLED WITH TIMECLOCK OVERRIDE.
7. PROVIDE OCCUPANCY SENSORS IN CEILING TO CONTROL HALLWAY AND UNIT LIGHTING WITH 15 MINUTE TIME DELAY. PROVIDE 82-55 UNIVERSAL POWER PACKS WITH WAIT STOPPER (LEGRANDS CQ-100 SERIES PASSIVE INFRARED CEILING SENSORS. QUANTITIES AND LOCATIONS ON DRAWINGS ARE DIAGRAMMATIC. E.C. SHALL PROVIDE VENDOR SHOP DRAWINGS FOR APPROVAL FOR ALL LIGHTING CONTROLS AND SHALL BE RESPONSIBLE TO ADD OR ADJUST IN FIELD TO ENSURE LIGHTING FUNCTIONS PROPERLY AND HALLWAYS AND ROOMS HAVE NO DEAD SPOTS.



1 ELECTRICAL PLAN - THIRD FLOOR
SCALE: 1/8" = 1'-0"



GODDARD & ASSOCIATES ENGINEERING
MEP Engineer
253 Techcenter Drive
Salem, Maine 04473
P: 317-506-8151
E: david@godardeng.com

PORT

| Revision No. | Date | Description |
|--------------|------|-------------|
| | | |

MAINE PORTLAND & RIVERSIDE
PROJECT NUMBER: 150 RIVERSIDE STREET
PORTLAND, ME 04103
ARCHITECT: 17-31
DATE: JDN
TYPE: BUILDING PERMIT SET
ISSUE DATE: JAN, 09, 2019
SHEET NAME: E300

ELECTRICAL THIRD FLOOR PLAN
E300
DEVELOP DESIGN LLC

Reviewed for Code Compliance
Permitting and Inspections Department
Approved with Conditions
02/14/2020



1/9/2019 3:54:04 PM