

BUILDING CODE DATA

Current Codes Used for Code Information

Maine State Building Code	2009
IBC International Building Code	2009
IEBC Int Existing Building Code	2009
IECC Int Energy Conservation Code	2009
NFPA 101, Life Safety Code	2009

INTERIOR FINISH CLASSIFICATION

ROOMS & SPACES - CLASS C

PROJECT DATA

CODE: MAINE STATE BUILDING CODE

AMENDMENTS, SEE ABOVE

PROJECT NAME: 190 RIVERSIDE DRIVE UNIT 1A - Maine Accessibility Corp

PROJECT ADDRESS: 190 RIVERSIDE DRIVE, PORTLAND, ME 04101

PARCEL ID, CBL: 267 A005001

ZONING CLASSIFICATION: B4 COMMERCIAL BUSINESS

OCCUPANCY TYPE: STORAGE (S-1), IBC 2009 303.1

THE BUILDING IS SPRINKLED

OCCUPANCY STORAGE/SHIPPING AREA: GROSS SF 1,579/300=5.2 (5)

OCCUPANCY INCIDENTAL OFFICE AREA: GROSS SF 451/100=4.5 (5)

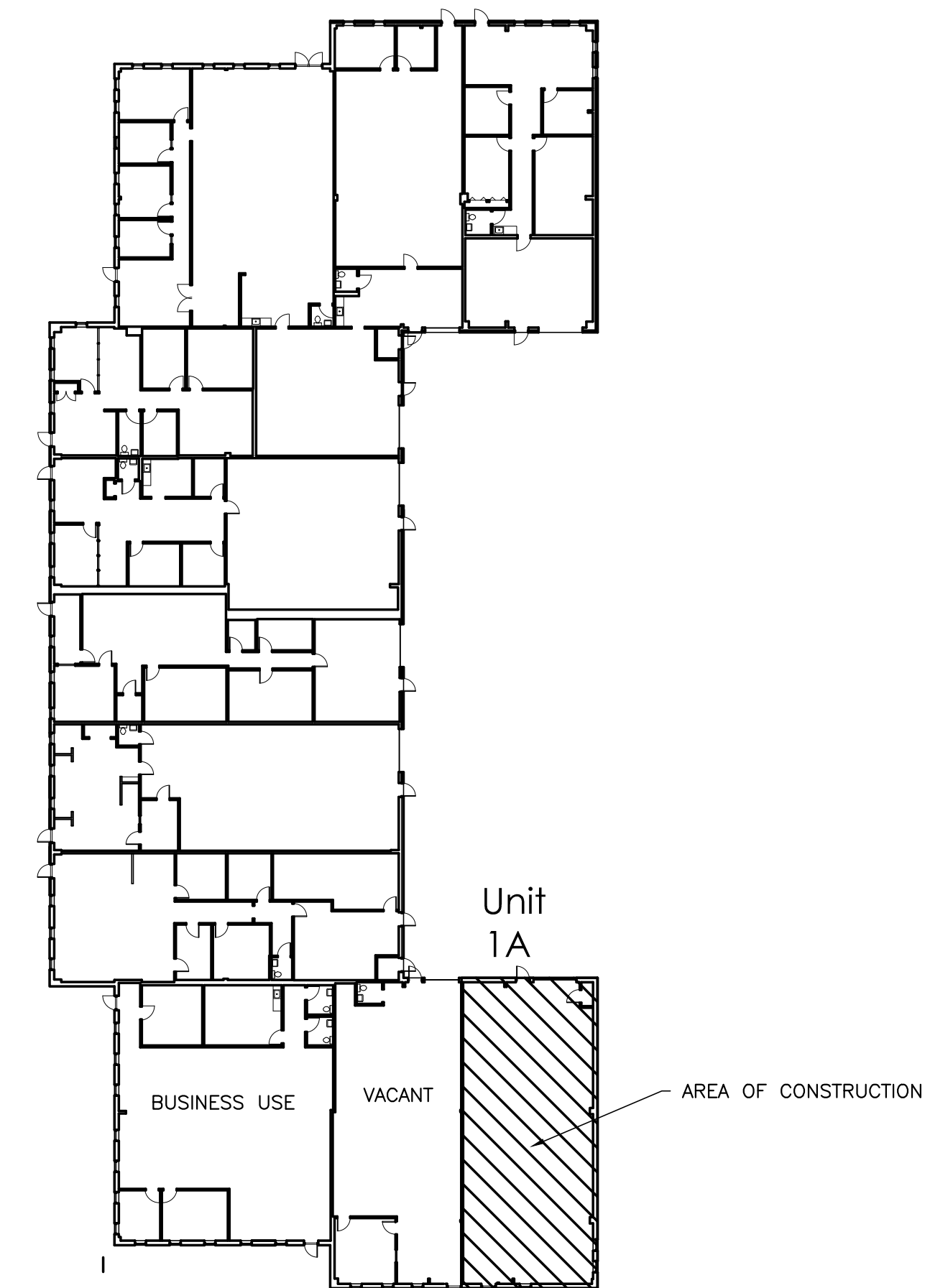
TOTAL BUILDING GROSS SF: 27,000

MIXED OCCUPANCIES IN BUILDING WITH EXISTING RATED SEPARATION

NUMBER OF STORIES: 1 STORIES

CONSTRUCTION TYPE: TYPE II-B

AFFECTED GROSS AREA OF CONSTRUCTION SQR. FOOTAGE: 2,030 S.F.



PROPOSED ELEVATOR MAINTENANCE OFFICE
 OCCUPANCY CALCULATION BUSINESS USE 100 SF GROSS
 IBC 2009 303.1 (BUSINESS USE CLASSIFICATION)

GENERAL CONTRACTOR

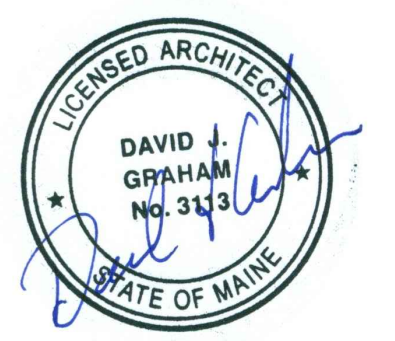
STRUCTURAL ENGINEER

MEP ENGINEER

CLIENT

PROJECT

Maine Accessibility Corp
 190 Riverside Drive, Unit 1A
 Portland, ME 04101



ISSUED FOR PERMIT

INFORMATION

Path: M:/boulos/190 riverside

Issue Date: 03/30/16

Drawn By: djg

Checked By:

Revision:

1. 04.18.16 - Changed use to storage with incidental office.

2.

3.

4.

TITLE

PROPOSED PLAN AND CODE DATA

SCALE

1/4"=1'-0"

© 2016 Graham Architects. All rights reserved. Information, material, and designs in this document are proprietary to and owned by Graham Architects and may not be disclosed to any third party, reproduced, posted on a global computer information network, or distributed in any way without the written consent from Graham Architects.

A-1

